

±119 ACRES
Development Land



SW-18-53-26-4
Rural Parkland County, AB

Victor Moroz, Associate Broker
780.499.6400 | victor@royalpage.ca

Royal LePage® Noralta Real Estate Inc, Brokerage
202 Main Street, Spruce Grove, AB
Independently Owned & Operated

FOR SALE

\$7,500,000.00

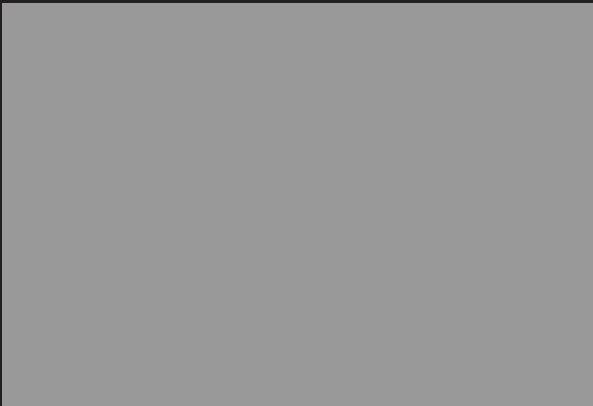
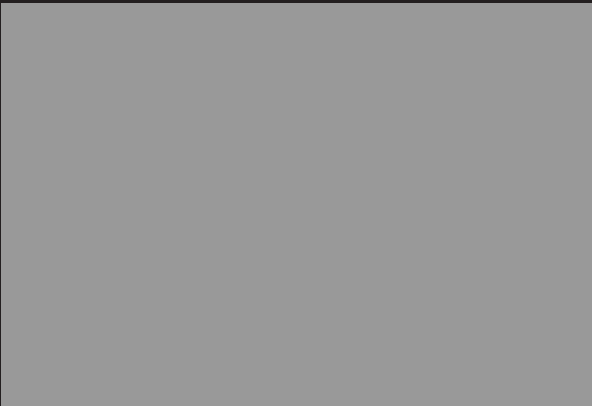
Property Features

- Prime Development Opportunity
- ±119 Acres of mostly flat, open land with approx. 50 treed acres
- High Visibility Location off Yellowhead Hwy
- ±81,524 Vehicles PPD on HWY 16
- Zoned HC - Highway Commercial District
- Municipal water located at HWY 44
- Sewer line on north side of property at Twp Rd 532A
- Gas line runs north to south through the property
- Located just 15 minutes from the west end of Edmonton

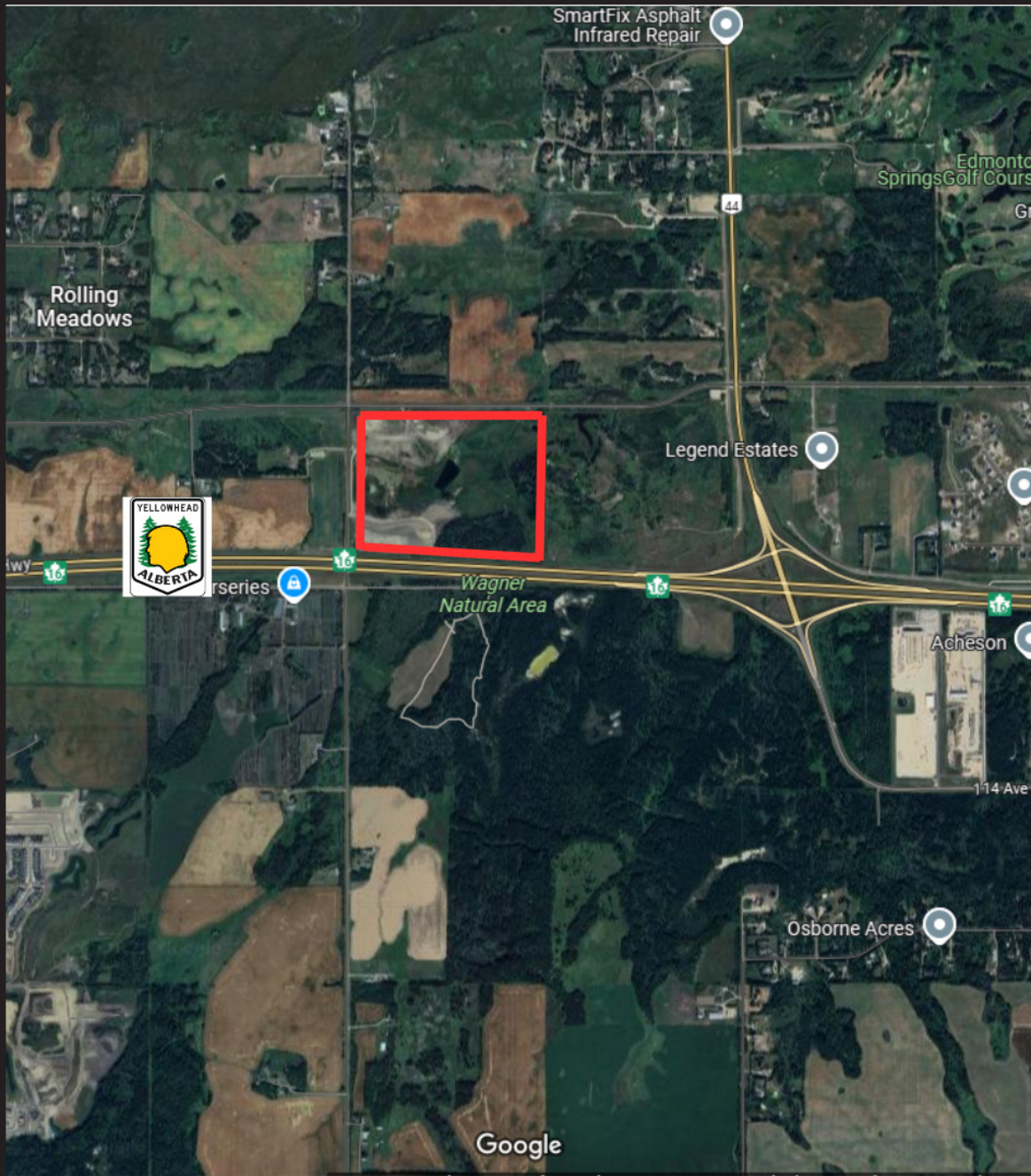


PROPERTY OVERVIEW

PROPERTY PHOTOS



LOCATION MAP



Royal LePage® is a registered trademark of Royal Bank of Canada and is used under licence by Residential Income Fund L.P., Bridgemark Real Estate Services Inc. and Bridgemark Real Estate Services Manager Limited.

All offices are independently owned and operated, except those marked as indicated at rlp.ca/disclaimer. Not intended to solicit currently listed properties or buyers under contract. The above information is from sources believed reliable, however, no responsibility is assumed for the accuracy of this information. ©2025 Bridgemark Real Estate Services Manager Limited. All rights reserved.