

FOR SALE



CHACONAS GROUP
ANN ARBOR AREA



719 W Ellsworth Rd., #1A Ann Arbor, MI

±5,906 SF of Industrial Space Available

Colliers Ann Arbor
1955 Pauline Blvd, Suite 400
Ann Arbor, MI 48103
734.994.3100
annarbor@colliers.com
colliersannarbor.com





FOR SALE

± 5,906 SF of Industrial Space Available

PROPERTY HIGHLIGHTS

- ± 5,906 SF
- \$797,000
- Versatile Flex Warehouse Condo
- Located in Oxford Commerce Park Off W. Ellsworth Rd. West of S. State St.
- Easy Access to I-94, Downtown Ann Arbor, Saline, and Surrounding Communities
- Approximately 23-Foot Ceilings
- Rolling Door and Dock
- Small Office Area and Restroom
- Ideal For Small Contractors, Showrooms, or Light Industrial Use (Municipal and Association Approval Required)
- Locally Owned and Professionally Managed by Oxford Companies



CHACONAS GROUP
ANN ARBOR AREA

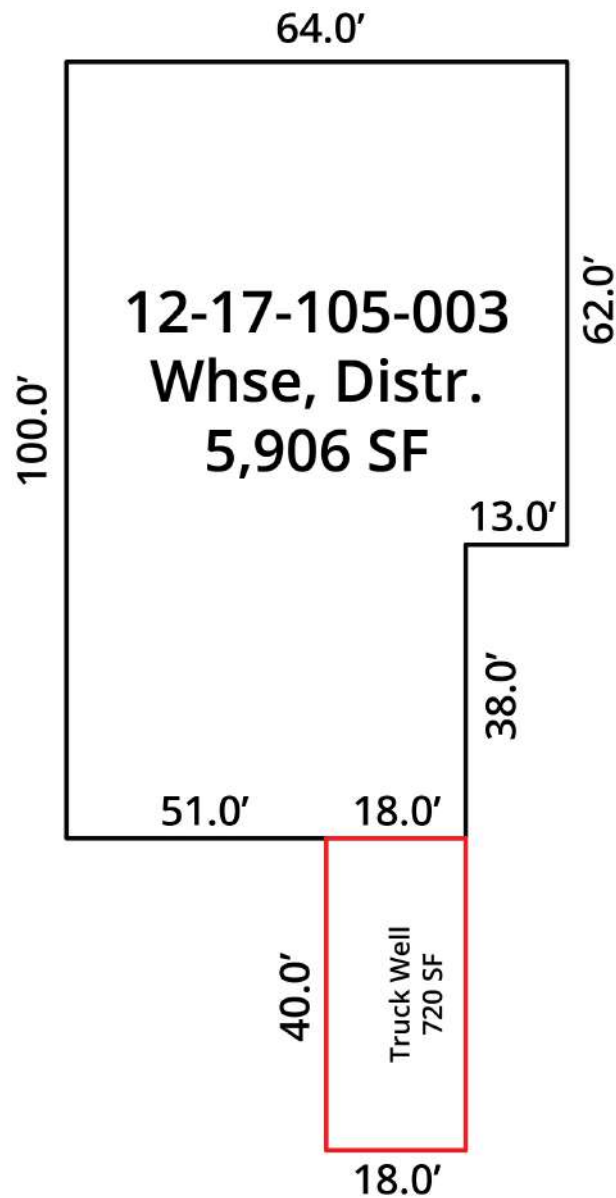


CHACONAS GROUP
ANN ARBOR AREA



FOR SALE

± 5,906 SF of Industrial Space Available

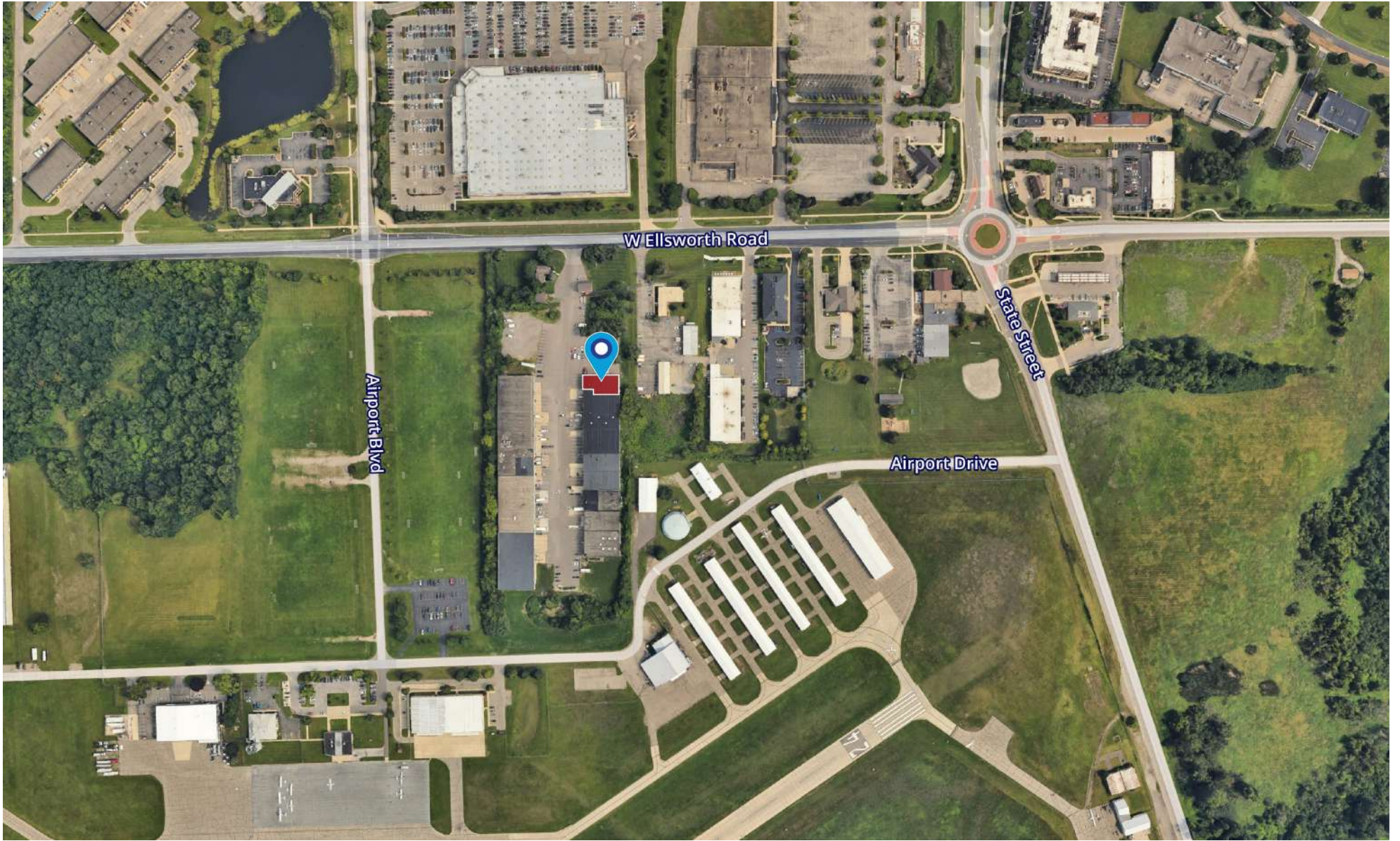


FLOOR PLAN

± 5,906 SF of Industrial Space Available



CHACONAS GROUP
ANN ARBOR AREA

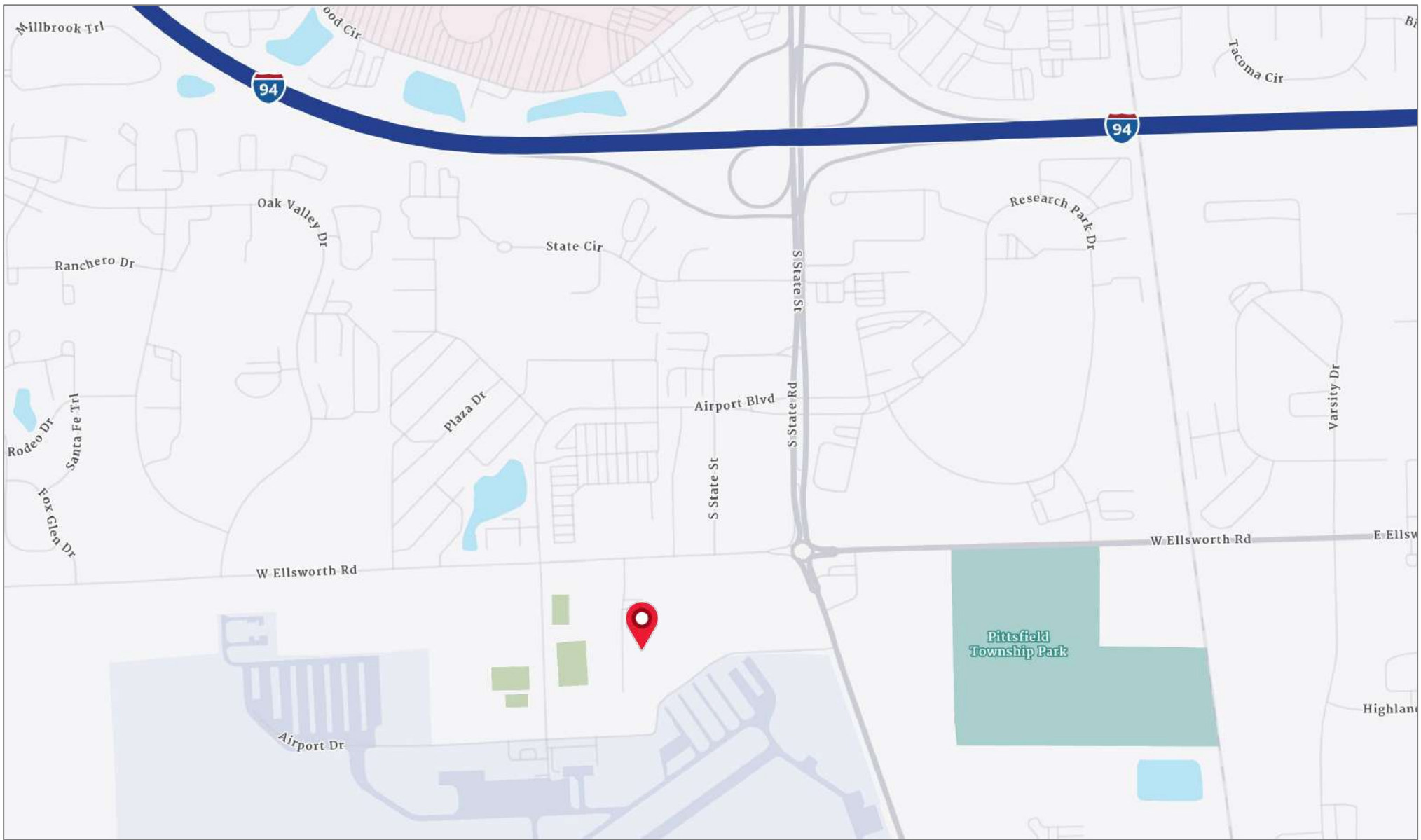


AERIAL MAP

± 5,906 SF of Industrial Space Available



CHACONAS GROUP
ANN ARBOR AREA



We have no reason to doubt the accuracy of information contained herein, but we cannot guarantee it. All information should be verified prior to purchase and/or lease.

LOCATION MAP

± 5,906 SF of Industrial Space Available



CHACONAS GROUP
ANN ARBOR AREA