

FOR LEASE
Base Rent
\$15.00 per Sq. Ft.*



#7 – 4286 Departure Bay Road
Nanaimo, BC

Opportunity

- 2,800 Sq. Ft. space in the Norwell Plaza complex behind Country Club Mall, available from September 1st.

*Plus Additional Rent estimated at \$15.05 per Sq. Ft. (2024)

John Hankins
c. 250-713-9830 o. 250-753-5757 ex.432
jhankins@naicommercial.ca

NAI Commercial CVI
2-1551 Estevan Road
Nanaimo, BC
+1 250 753 5757
naivanisle.ca

#7 – 4286 Departure Bay Rd

Nanaimo, BC

Details

- This 2,800 square foot space provides great storefront exposure.
- The unit opens into a large versatile open space. It has a rear dock loading, a large storage area, closed office and 3 washrooms.
- Norwell Plaza is located behind Country Club Mall and has a Mac's Convenience and Gas Bar.
- Available for lease from September 1st.

Property Details

Civic Address

4286 Departure Bay Road

Unit Size

2,800 Sq. Ft.

Legal Description

Lot 2, Section 5, Wellington District, Plan 37030

Zoning

COR-3

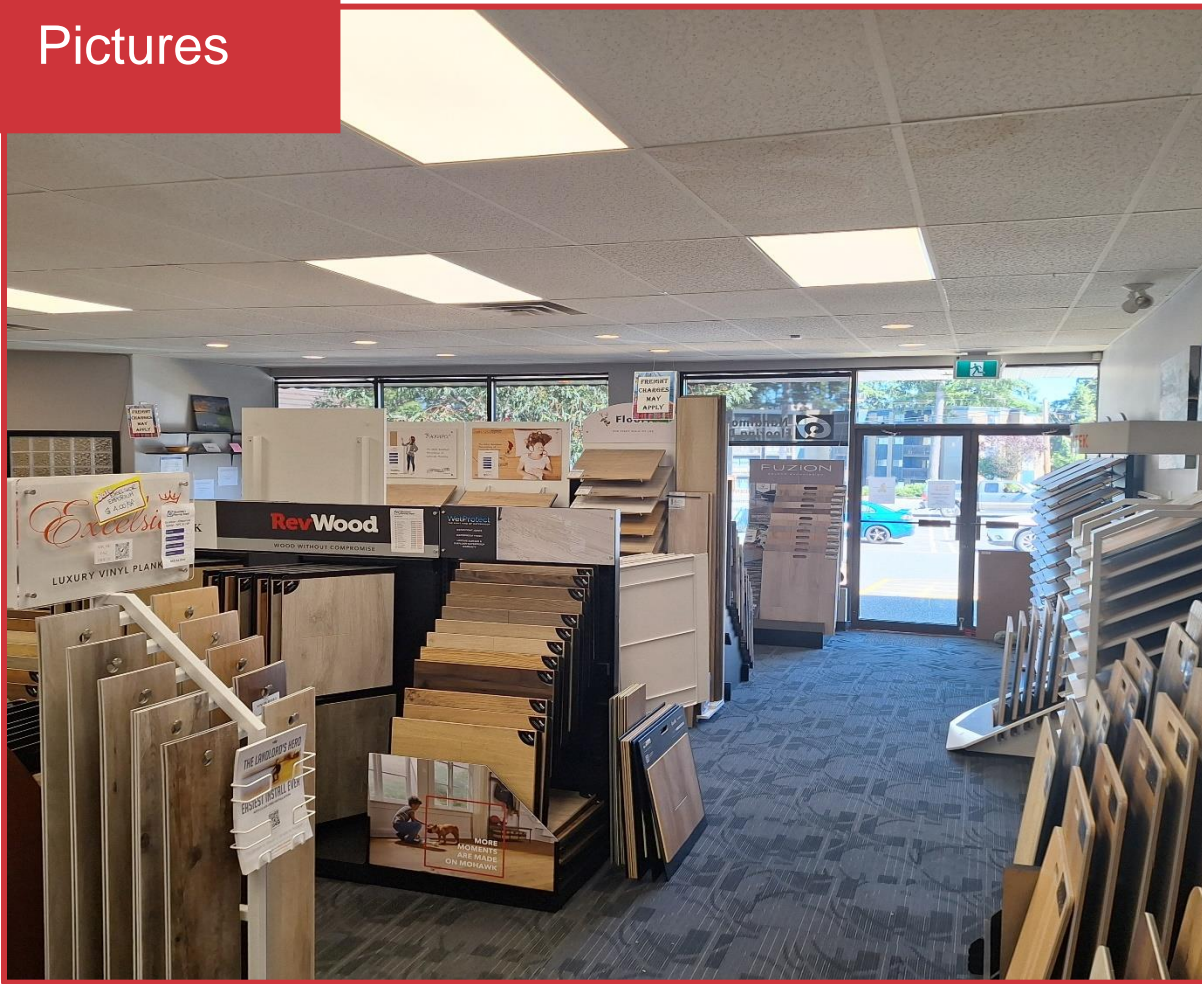
Base Rent

\$15.00 per Sq. Ft.*

*Additional Rent

\$15.05 per Sq. Ft.

Pictures



Pictures

