



### PROPERTY DESCRIPTION

Historic Landmark #48 Dacy Fazio House Available for Sale. Restored in the 1980's, the approximately 1,800 (+/-) sq ft house is filled with traditional Craftsman Bungalow style details. An approximately 1,200 (+/-) sq ft Carriage House/Barn sits at the rear of the lot which known as the last remaining example of a carriage house/barn in the old downtown area. This is a great opportunity for an owner/user. Sale includes surface parking lot with up to 6 parking spaces.

### OFFERING SUMMARY

Sale Price:	\$1,350,000
Lot Size:	6,263 SF
Building Size:	3,000 SF

### CONTACT INFORMATION

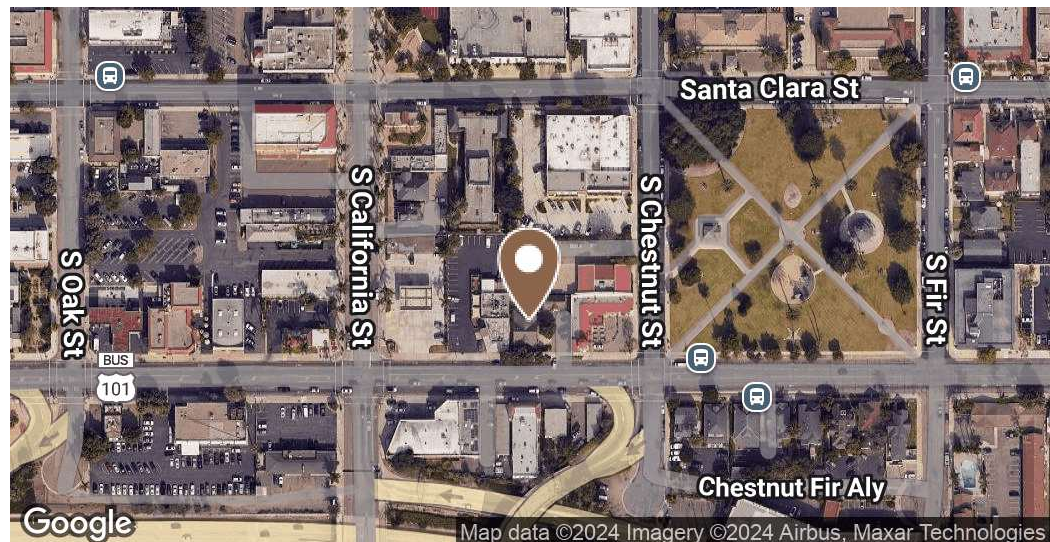
Jeffrey R. Becker | 805.653.6794 ext. 201 | [jbecker@beckergroup.com](mailto:jbecker@beckergroup.com)  
Hutton Becker | 805.653.6794 ext. 212 | [hbecker@beckergroup.com](mailto:hbecker@beckergroup.com)

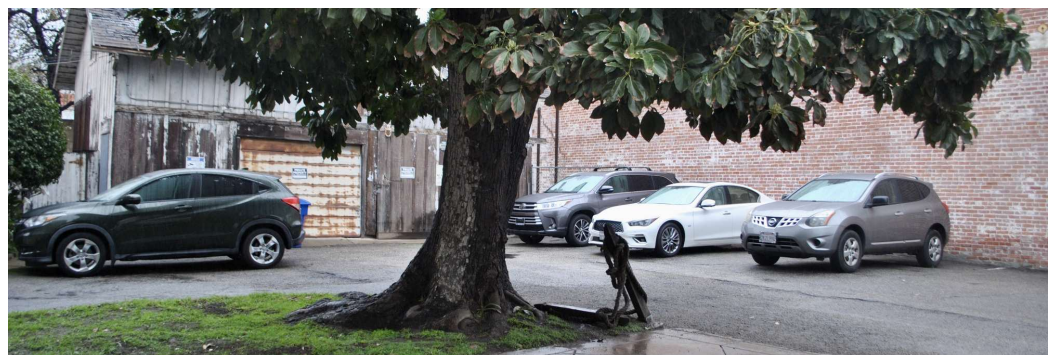
### JEFFREY R. BECKER CCIM . CPM . RPA

805.653.6794

[jbecker@beckergroup.com](mailto:jbecker@beckergroup.com)

CA DRE #01213236





JEFFREY R. BECKER CCIM . CPM . RPA

805.653.6794

[jbecker@beckergroup.com](mailto:jbecker@beckergroup.com)

CA DRE #01213236

Sale Price

\$1,350,000

## LOCATION INFORMATION

Street Address	557 East Thompson Blvd
City, State, Zip	Ventura, CA 93001
County	Ventura
Nearest Highway	101

## BUILDING INFORMATION

Building Size	3,000 SF
Building Class	B
Number of Buildings	2

## PROPERTY INFORMATION

Property Type	Office
Property Subtype	Office Building
Zoning	T5.1
Lot Size	6,263 SF
APN #	073-0-131-060

## PARKING & TRANSPORTATION

Parking Type	Surface
Number of Parking Spaces	6

## UTILITIES & AMENITIES

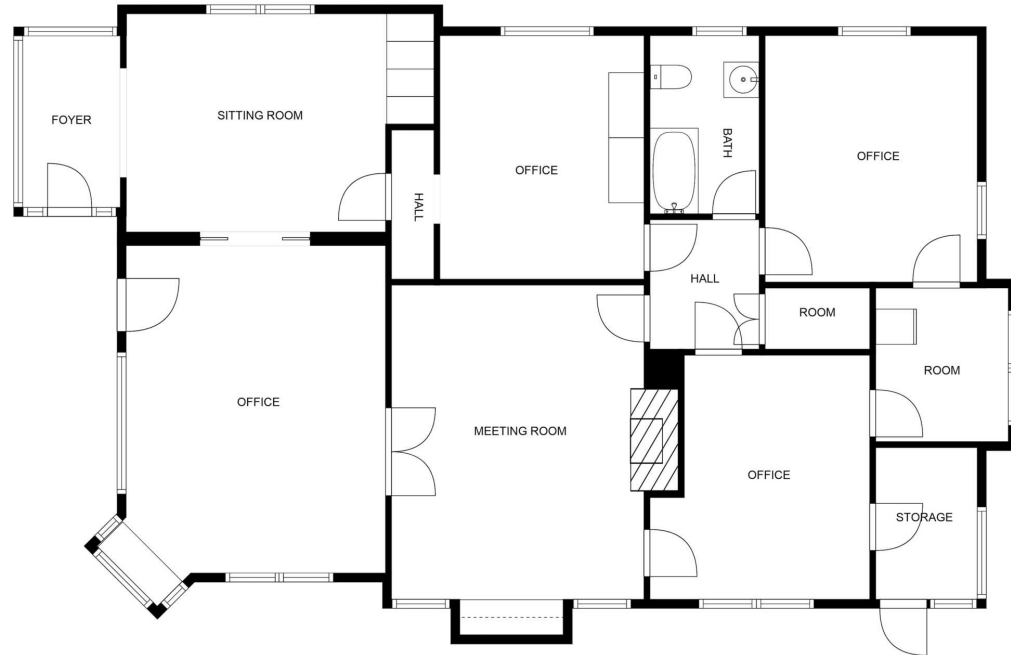
Handicap Access	No
-----------------	----

JEFFREY R. BECKER CCIM . CPM . RPA

805.653.6794

jbecker@beckergrp.com

CA DRE #01213236



**JEFFREY R. BECKER CCIM . CPM . RPA**

805.653.6794

[jbecker@beckergroup.com](mailto:jbecker@beckergroup.com)

CA DRE #01213236