



# SOUTHTREE

COMMERCIAL REAL ESTATE

# OFFICE SPACE FOR LEASE

741 W LANIER AVENUE - FAYETTEVILLE, GA

7,658 RSF | Available 5/1/2026



## HIGHLIGHTS

7,658 RSF Available 5/1/2026

Asking Rate: Please Inquire

Signage available to over 27,000 Vehicles Per Day

Parking Ratio: 4 spaces per 1,000 SF

The suite works well for a medical or general office user

Highly professional tenant mix within the building

Located 5 minutes from Trilith Studios and Piedmont Fayette Hospital

Located 25 Minutes from Hartsfield-Jackson International Airport

Locally owned and managed



EMILY WINKLE

678.793.5464

ewinkle@stcom.us



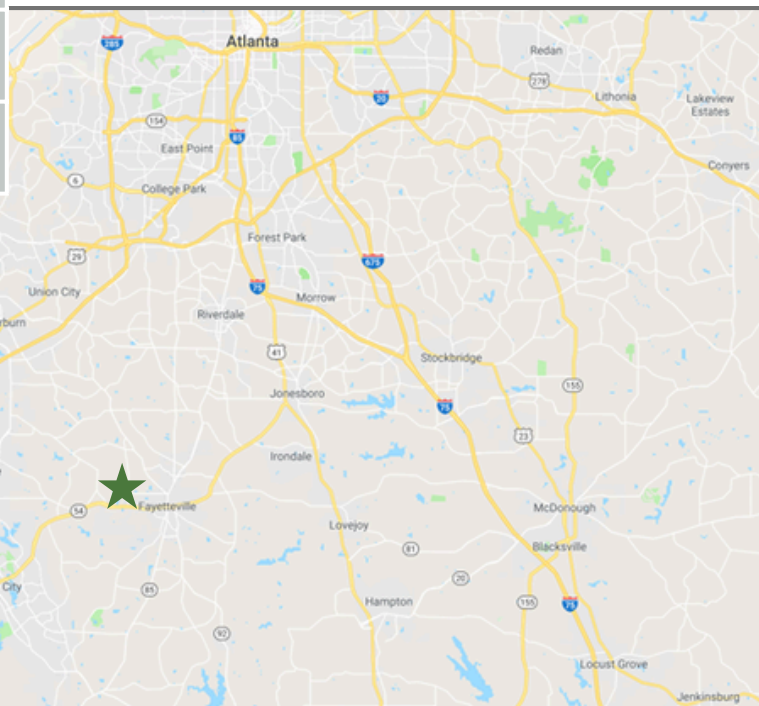
STCOM.US



201 PROSPECT PARK, SUITE A,  
PEACHTREE CITY, GA 30269

## DEMOGRAPHICS

POPULATION	5 MILE RADIUS
2021	51,290
2026	53,394
POP GROWTH 2021-2026	0.8%
MEDIAN AGE	43.7
HOUSEHOLDS	5 MILE RADIUS
2021 TOTAL HH	18,552
2021 AVERAGE HH INCOME	\$108,288
MEDIAN HOME VALUE	\$247,705



**EMILY WINKLE**

678.793.5464

ewinkle@stcom.us



**STCOM.US**



**201 PROSPECT PARK, SUITE A,  
PEACHTREE CITY, GA 30269**



# SOUTHTREE

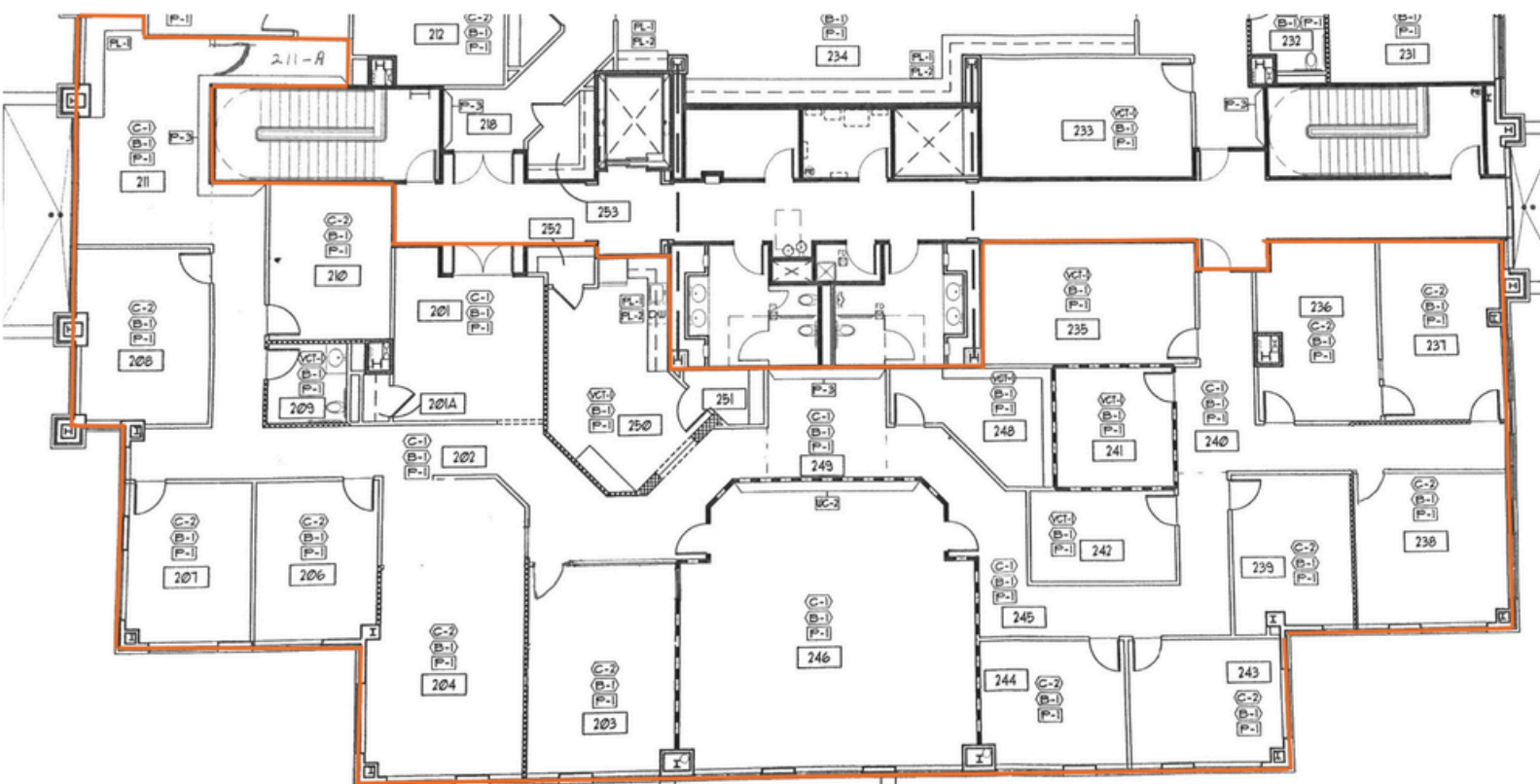
COMMERCIAL REAL ESTATE

# OFFICE SPACE FOR LEASE

741 W LANIER AVENUE - FAYETTEVILLE, GA

7,658 RSF | Available 5/1/2026

## FLOOR PLAN



EMILY WINKLE

678.793.5464

ewinkle@stcom.us



STCOM.US



201 PROSPECT PARK, SUITE A,  
PEACHTREE CITY, GA 30269