

For Lease

711 Ivy Street Glendale | CA



Presented By:

Christopher Rohrer
818.624.1180
chris@pacwestonline.com
DRE#02018754

Ron Rohrer
818.309.0628
ron@pacwestonline.com
DRE#01918399

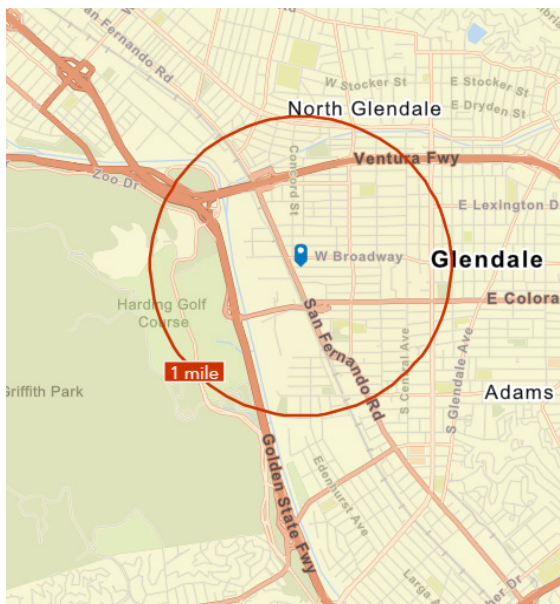
Randy Rohrer
818.244.3000
randy@pacwestonline.com
DRE#00672287

Scott Cox
818.244.3000
scott@pacwestonline.com
DRE#01070703



Property Information

Available SF:	8,560 SF	›	Ground Floor & Dock Loading
Asking Price:	\$13,696 (\$1.50/SF)	›	Renovated Offices
Lease Type:	Modified Gross	›	Gated Parking
Power:	400 A; 240V; 3 Ph	›	Convenient to 5 and 134 freeways
Zoning:	IMU	›	12 Foot Clearance in Warehouse
Parking:	8 Gated	›	2,250 SF of Office
Built:	1945	›	10' x 10' Loading Door



34,218

Population



2.4

Average Household Size



40.6

Median Age

\$67,996

Median Household Income



13%

No High School Diploma



24%

High School Graduates



24%

Some College



39%

Bachelor's/GreatPr of Degree

BUSINESS



3,816

Total Businesses



33,642

Total Employees

EMPLOYMENT



67.1%

White Collar



17.2%

Blue Collar



15.7%

Services

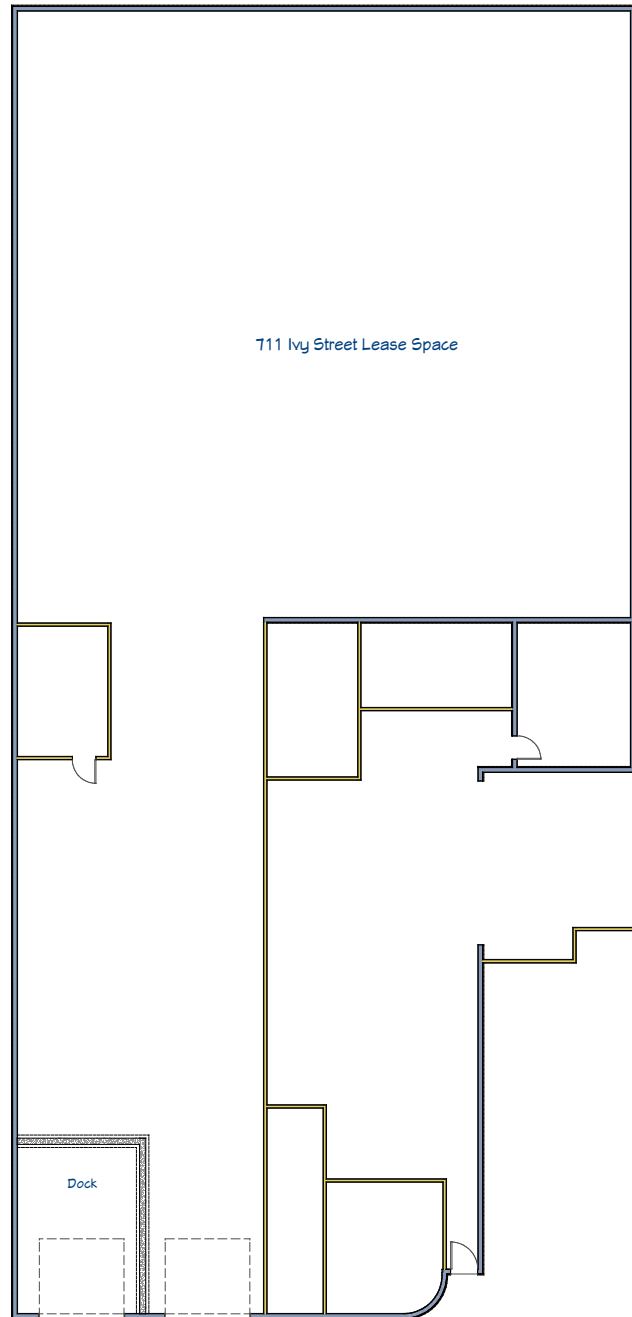


7.5%

Unemployment Rate

The facts contained herein, while not guaranteed as to accuracy, are accurate to the best of our knowledge and belief.

Floor Plan



Map Location

Pacific West Business Properties, Inc.

6624 San Fernando Road Glendale, CA 91201 | 818-244-3000



Photos

