



## Renovated Industrial Facility

87 Carpenter Drive

Annville, Kentucky 40402

### Property Highlights

- Newly renovated industrial facility located in the Jackson County Regional Industrial Park
- +/-7,638 SF warehouse and +/-2,497 SF office
- 16-18' ceilings throughout the warehouse
- Built in 2005; Renovated in 2024
- 1 drive-in door (12' height)
- 3-Phase electric, 2400 volts/1200 amps
- Located just +/-20 minutes to London and Booneville and +/-25 minutes to I-75

### Offering Summary

<b>Sale Price:</b>	\$1,200,000
<b>Building Size:</b>	10,135 SF
<b>Lot Size:</b>	1.8 Acres

### For More Information



**Max Darby**

Associate

O: 859 224 2000

mdarby@naiisaac.com





Commercial Real Estate Services, Worldwide.

For Sale

10,135 SF | \$1,200,000

Renovated Industrial Facility



NO WARRANTY OR REPRESENTATION, EXPRESS OR IMPLIED, IS MADE AS TO THE ACCURACY OF THE INFORMATION CONTAINED HEREIN, AND THE SAME IS SUBMITTED SUBJECT TO ERRORS, OMISSIONS, CHANGE OF PRICE, RENTAL OR OTHER CONDITIONS, PRIOR SALE, LEASE OR FINANCING, OR WITHDRAWAL WITHOUT NOTICE, AND OF ANY SPECIAL LISTING CONDITIONS IMPOSED BY OUR PRINCIPALS NO WARRANTIES OR REPRESENTATIONS ARE MADE AS TO THE CONDITION OF THE PROPERTY OR ANY HAZARDS CONTAINED THEREIN ARE ANY TO BE IMPLIED.

771 Corporate Drive, Suite 500  
Lexington, KY 40503  
859 224 2000 tel  
[naiisaac.com](http://naiisaac.com)



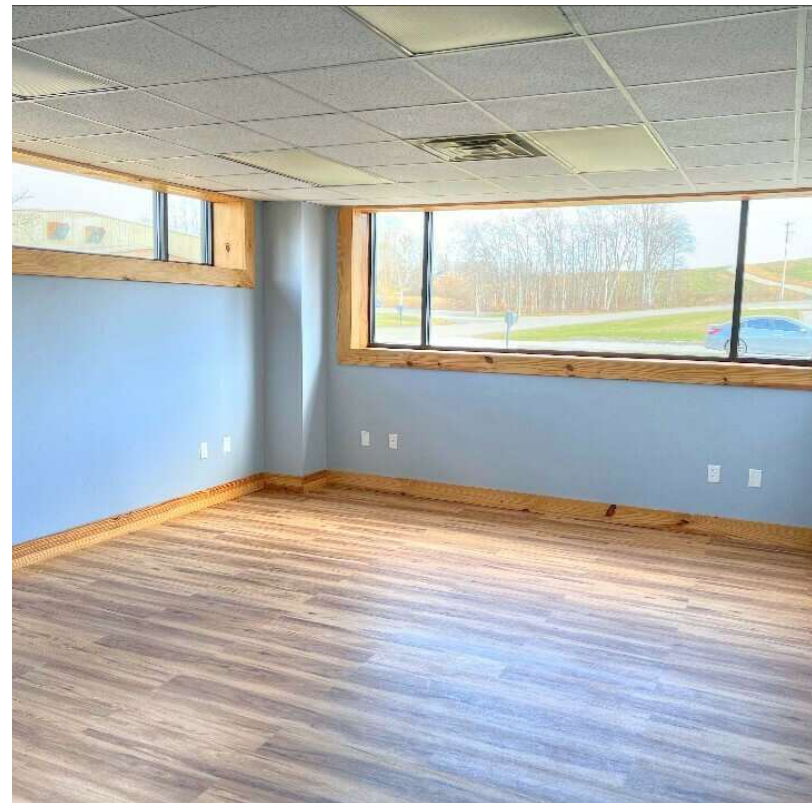
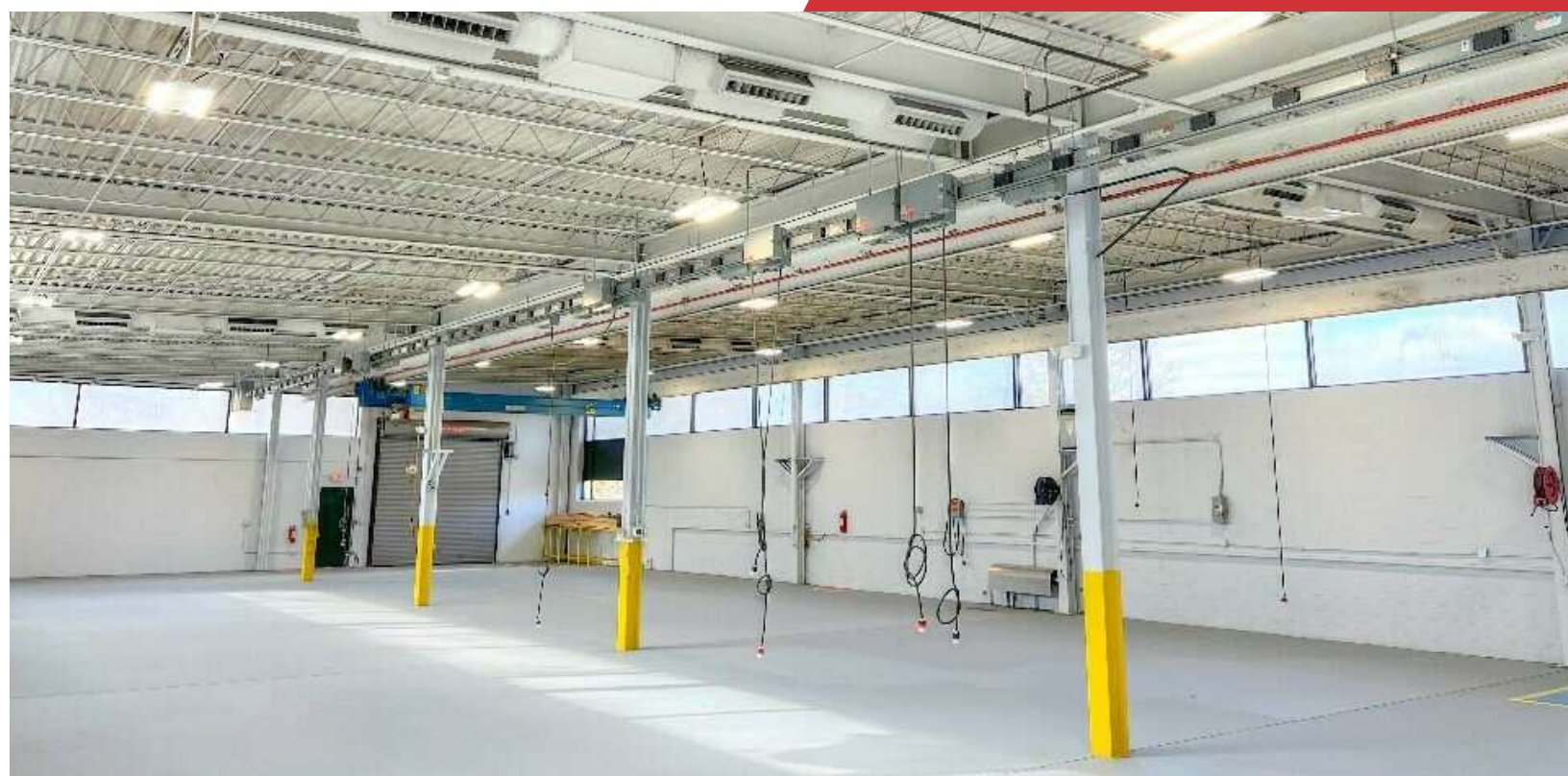


Commercial Real Estate Services, Worldwide.

For Sale

10,135 SF | \$1,200,000

Renovated Industrial Facility



NO WARRANTY OR REPRESENTATION, EXPRESS OR IMPLIED, IS MADE AS TO THE ACCURACY OF THE INFORMATION CONTAINED HEREIN, AND THE SAME IS SUBMITTED SUBJECT TO ERRORS, OMISSIONS, CHANGE OF PRICE, RENTAL OR OTHER CONDITIONS, PRIOR SALE, LEASE OR FINANCING, OR WITHDRAWAL WITHOUT NOTICE, AND OF ANY SPECIAL LISTING CONDITIONS IMPOSED BY OUR PRINCIPALS NO WARRANTIES OR REPRESENTATIONS ARE MADE AS TO THE CONDITION OF THE PROPERTY OR ANY HAZARDS CONTAINED THEREIN ARE ANY TO BE IMPLIED.

771 Corporate Drive, Suite 500  
Lexington, KY 40503  
859 224 2000 tel  
[naiisaac.com](http://naiisaac.com)



### Location Information

<b>Building Name</b>	Renovated Industrial Facility
<b>Street Address</b>	87 Carpenter Drive
<b>City, State, Zip</b>	Annville, KY 40402
<b>County</b>	Jackson County

### Building Information

<b>Building Size</b>	10,135 SF
<b>Roof</b>	Flat/Composition Rubber
<b>Drive-In Door</b>	One
<b>Year Built/Renovated</b>	2005/2024
<b>Power</b>	3-Phase / 2400 volts

### Property Information

<b>Property Type</b>	Industrial
<b>Property Subtype</b>	Manufacturing
<b>Lot Size</b>	+/-1.8 Acres
<b>APN #</b>	71-26F

### Mechanical Information

<b>Crane</b>	5-ton overhead adjustable
<b>Cable</b>	Fiber Optic
<b>Power</b>	Pow-R-Way III Busway fusible switch

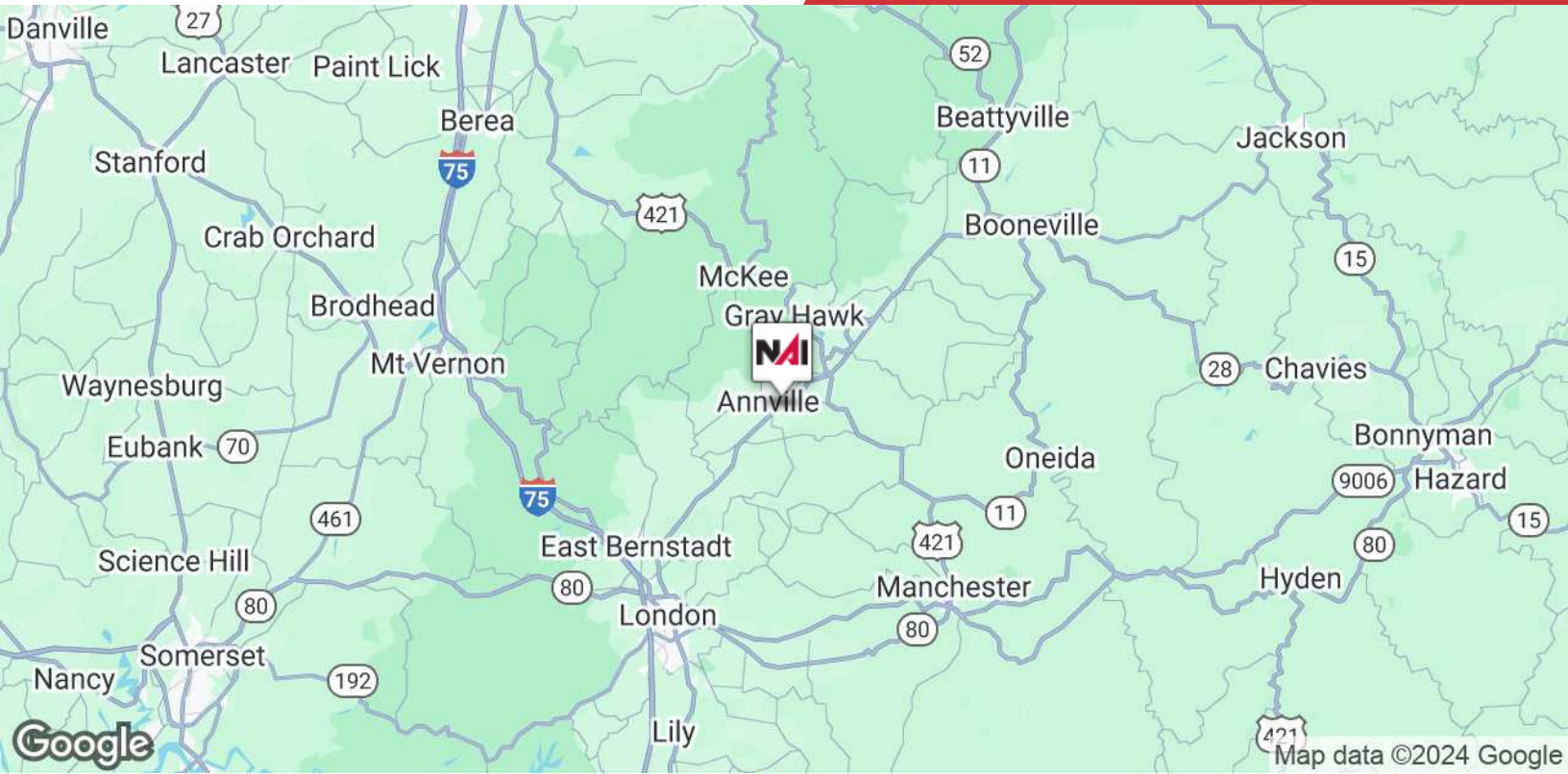




## For Sale

10,135 SF | \$1,200,000

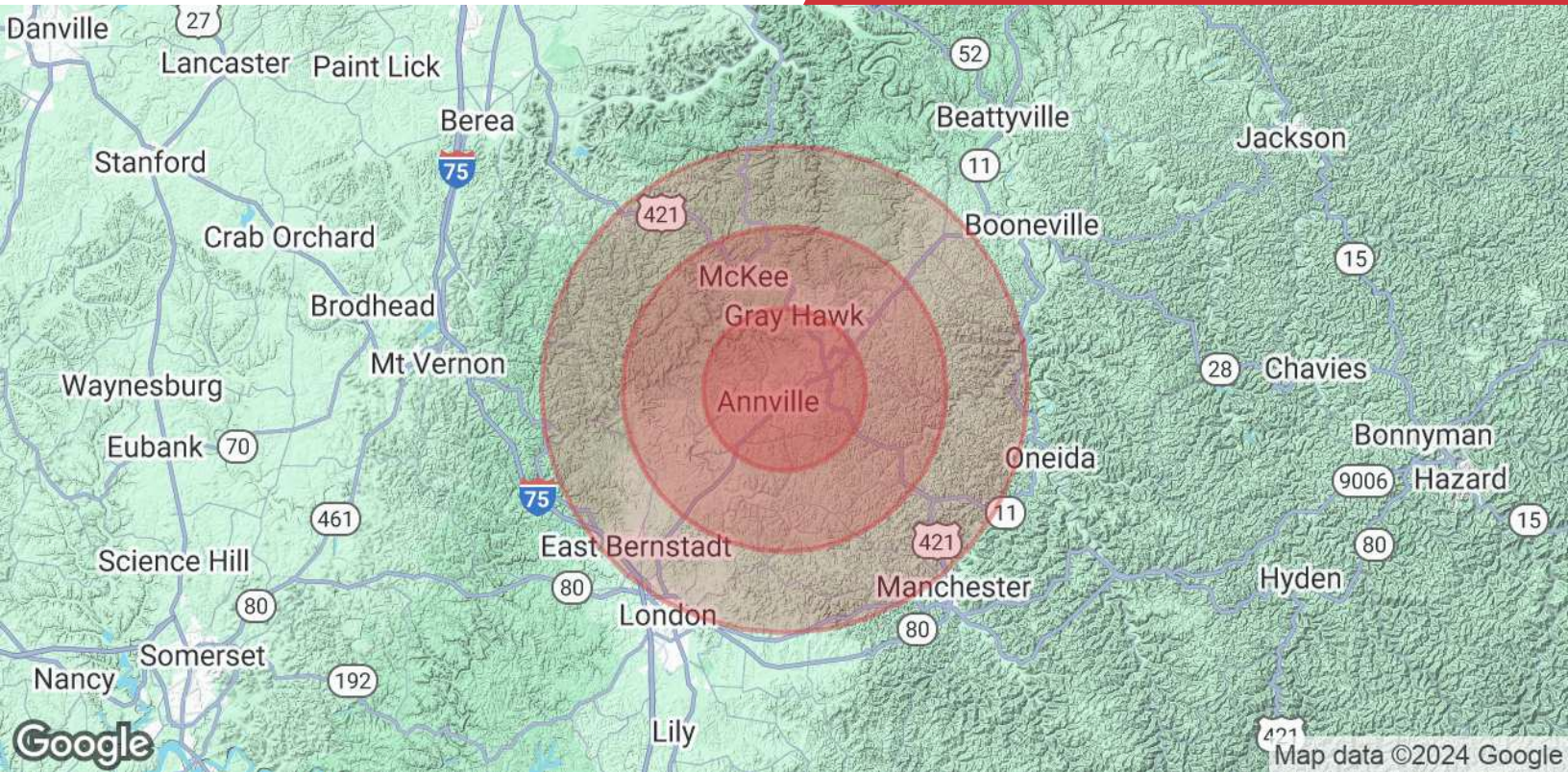
### Renovated Industrial Facility



NO WARRANTY OR REPRESENTATION, EXPRESS OR IMPLIED, IS MADE AS TO THE ACCURACY OF THE INFORMATION CONTAINED HEREIN, AND THE SAME IS SUBMITTED SUBJECT TO ERRORS, OMISSIONS, CHANGE OF PRICE, RENTAL OR OTHER CONDITIONS, PRIOR SALE, LEASE OR FINANCING, OR WITHDRAWAL WITHOUT NOTICE, AND OF ANY SPECIAL LISTING CONDITIONS IMPOSED BY OUR PRINCIPALS NO WARRANTIES OR REPRESENTATIONS ARE MADE AS TO THE CONDITION OF THE PROPERTY OR ANY HAZARDS CONTAINED THEREIN ARE ANY TO BE IMPLIED.

771 Corporate Drive, Suite 500  
Lexington, KY 40503  
859 224 2000 tel  
[naiisaac.com](http://naiisaac.com)





	5 Miles	10 Miles	15 Miles
<b>Population</b>			
<b>Total Population</b>	5,320	15,238	38,892
<b>Average Age</b>	41	41	41
<b>Average Age (Male)</b>	40	40	40
<b>Average Age (Female)</b>	42	42	42
<b>Households &amp; Income</b>			
<b>Total Households</b>	2,051	5,936	14,913
<b># of Persons per HH</b>	2.6	2.6	2.6
<b>Average HH Income</b>	\$59,900	\$58,225	\$59,663
<b>Average House Value</b>	\$109,394	\$130,355	\$145,030

Demographics data derived from 2024 STDB