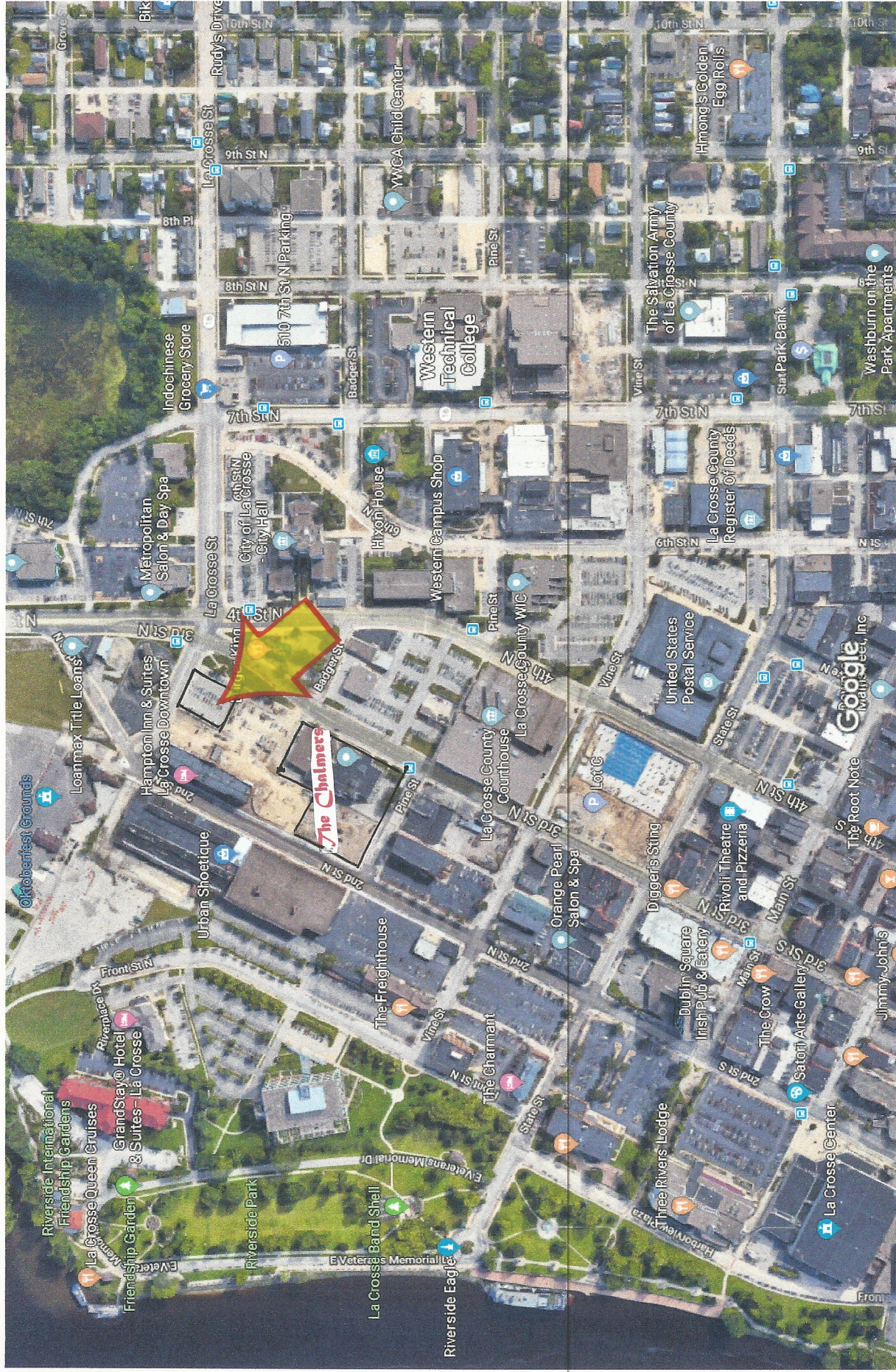
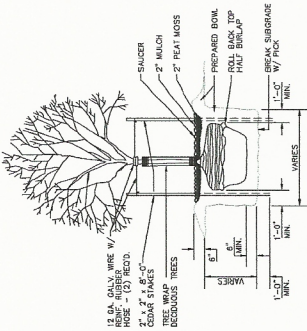


Google Maps

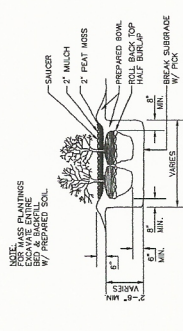


Imagery ©2019 Google, Imagery ©2019 Maxar Technologies, U.S. Geological Survey, USDA Farm Service Agency, Map data ©2019 200 ft





NO SCALE



NO SCALE

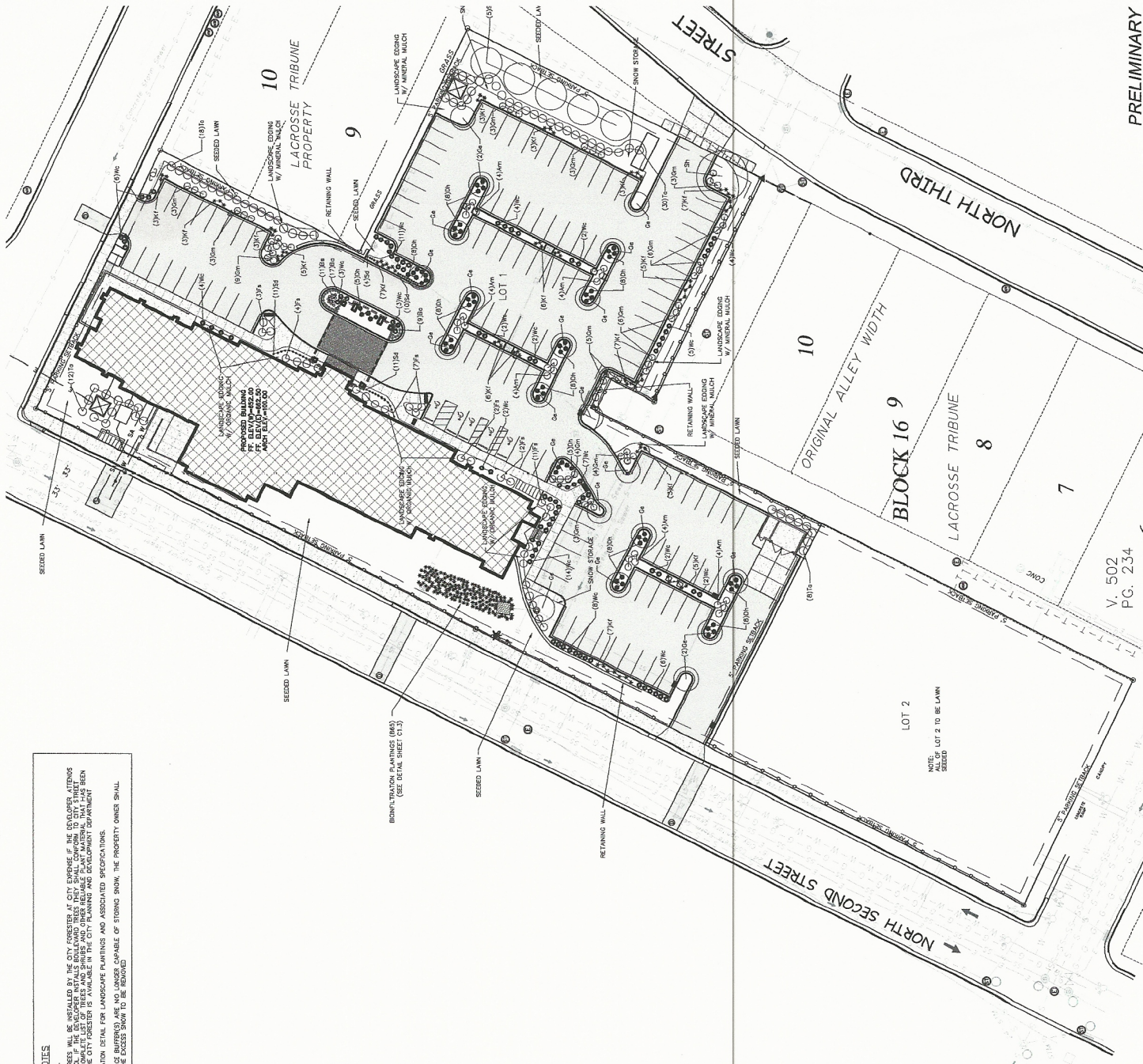
LANDSCAPING CALCULATIONS		15.10(16)(G)
ZONE	REQ. PLANTS	PLANTS PROVIDED
STREET F&O	1 TREE IN BOULEVARD PER 40' OF FRONTAGE 2nd St. - 45' (11 TREES) 1st St. - 45' (11 TREES) N. GARDEN TREES	N/A
LOT F&O	2 TREES AND 8 SHRUBS PER 600SF OF LANDSCAPED AREA 35,427 SF / 600 SF = 59 TREES 328 SHRUBS/148 PERENNIALS	21 TREES 328 SHRUBS/148 PERENNIALS
PARKING F&O	PROVIDE 2' HIGH CURB BETWEEN PARKING AREAS AND STREET FRONTAGE	68 SHRUBS FOR SCREENING
INTERIOR LANDSCAPING	PROVIDE 10% MINIMUM OF PARKING LOT FOR INTERIOR LANDSCAPING	INTERIOR LANDSCAPING: 18.2%

LANDSCAPING NOTES			
SUBJECT	COMMON NAME	BOTANICAL NAME	PLANTED QUANTITY
DECIDUOUS TREES			
Sh	Shrub: Small Tree Maple	Acer x freemanii "Spartan"	3"
Sh	Shrub: Small Tree Maple	Quercus laevis "Spartan"	3"
Sh	Shrub: Small Tree Maple	Syringa reticulata "Golden Edge"	2"
DECIDUOUS SHRUBS			
Sh	Shrub: Small Tree Maple	Quercus laevis	3 gpl
Sh	Shrub: Small Tree Maple	Syringa reticulata	3 gpl
Sh	Shrub: Small Tree Maple	Syringa reticulata	3 gpl
Sh	Shrub: Small Tree Maple	Syringa reticulata	3 gpl
EVERGREEN SHRUBS			
Sh	Shrub: Small Tree Maple	Thuja occidentalis	5 gpl
Sh	Shrub: Small Tree Maple	Thuja occidentalis	5 gpl
PERENNIALS			
Sh	Shrub: Small Tree Maple	Colinus grata x coccinea "Kori Forest"	1 gpl
Sh	Shrub: Small Tree Maple	Hebe x coccinea "Spartan"	1 gpl
Sh	Shrub: Small Tree Maple	Hebe x coccinea "Spartan"	1 gpl
Sh	Shrub: Small Tree Maple	Hebe x coccinea "Spartan"	1 gpl

**PROJECT NOTES**

GENERAL NOTES:

- BOULEVARD TREES WILL BE INSTALLED BY THE CITY FORESTER AT CITY EXPENSE. IF THE DEVELOPER ATTENDS TO THE BOULEVARD TREES, THE CITY FORESTER WILL BE RESPONSIBLE FOR THE BOULEVARD TREES. THE CITY FORESTER WILL BE RESPONSIBLE FOR THE BOULEVARD TREES. THE CITY FORESTER WILL BE RESPONSIBLE FOR THE BOULEVARD TREES.
- SEE BIODIVERSITY DETAIL FOR LANDSCAPE PLANTINGS AND ASSOCIATED SPECIFICATIONS.
- IF ORDER SPACE BUFFERS ARE NOT LARGER CAPABLE OF STORING SNOW, THE PROPERTY OWNER SHALL PROVIDE FOR THE SNOW SNOW TO BE REMOVED.





## Parking Facilities – Downtown La Crosse

The Parking Utility operates and maintains several public parking ramps and lots in downtown La Crosse. We welcome you to park FREE on weekends and weekday evenings within our downtown parking ramps. You must pre-pay and register your vehicle at the pay stations or using the PassportParking app at all times from 6AM through 6PM, Monday through Friday, or you will be subject to fines. You must pre-register to receive your three free hours during this time also (available only at pay stations). You may only take advantage of the three hours free, once per calendar day, or you will be subject to fines.

### Parking Ramps



### Parking Ramps

**#1 - Pine Street Ramp** - Parking Permit - \$42.40/month, 24/7 non-reserved (first come, first serve) - Currently SOLD OUT

- 3-hours free, once per calendar day (no re-parking allowed)
- After first 3-hours, \$1.00/hour



**#2 - Main Street Ramp - (3rd @ Main – State)** Parking Permit - \$42.40/month, 24/7 non-reserved (first come, first serve) - Currently SOLD OUT

- Prepaid hourly fees (\$1.00/hour) charged at walk-up pay stations between 6AM and 6PM
- First three hours are FREE, once per calendar day (no re-parking allowed)
- FREE parking weekday evenings from 6PM through 6AM and all weekend

**#3 - La Crosse Center Ramp - (Jay @ 2nd – 3rd)** Parking Permit - \$42.40/month, 24/7 non-reserved (first come, first serve)

- Prepaid hourly fees (\$1.00/hour) charged at walk-up pay stations between 6AM and 6PM
- First three hours are FREE, once per calendar day (no re-parking allowed)
- FREE parking weekday evenings from 6PM through 6AM and all weekend

**#4 - Riverside Ramp - (2nd @ Jay – King)** FREE PARKING! 12-hour time restriction

None- FREE PARKING!

**#5 - Market Square Ramp - (4th @ Jay – King)** - Parking Permit - \$42.40/month, 24/7 non-reserved (first come, first serve)

- Parking Permit - \$75/month, secure underground heated
- Prepaid hourly fees (\$1.00 /hour) charged at walk-up pay stations between 6AM and 6PM
- First three hours are FREE, once per calendar day (no re-parking allowed)
- FREE parking weekday evenings from 6PM through 6AM and all weekend

## Parking Lots

**"Oktoberfest" lot (2nd & La Crosse)** - Unrestricted free parking most times, EXCEPT during festivals and events

**"Pumphouse" lot (Front & King)** - All 40 stalls leased at all times; utilized by Arts Center and Piggy's restaurant patrons only

**"Selrite" lot (2nd & Cass)** - Lot unavailable temporarily due to construction