

10801

— 10801 —
NATIONAL

**10801 NATIONAL BOULEVARD
LOS ANGELES, CA 90064**





10801
NATIONAL

10801 NATIONAL BOULEVARD
LOS ANGELES, CA 90064

OVERVIEW

10801 National Blvd | Prestige. Presence. Permanence.

Located in the heart of West Los Angeles, 10801 National Blvd is a distinguished six-story commercial building offering approximately 64,000 sq ft of flexible office and retail space. Designed by renowned architect Edward Durell Stone, the building features a timeless exterior of gardenia white concrete and bronze-tinted glass.

The recently renovated lobby impresses with a soaring two-story ceiling, a tranquil water lagoon with mosaic-tiled fountains, bookmatch porcelain marble and Venetian plaster walls, a modern touchscreen directory, and dynamic LED lighting that enhances the sophisticated ambiance.

Tenants enjoy high ceilings, floor-to-ceiling windows, on-site and subterranean parking, a rentable 15-person conference room, and full-time on-site property management. The building is ADA-compliant and equipped with a secure access system and extensive security cameras.

With direct access to the 10 and 405 Freeways and proximity to shops, dining, and public transit, 10801 National offers exceptional connectivity and exposure—including premier building signage visible from the 10 Freeway.



6 Floors



Controlled Access



Panoramic Ocean
& City View



Next to the
10 & 405 Freeways



On-Site Property
Manager



24/7 CCTV Security



4/1000
Parking Ratio



Walkable Metro
Distance



\$100/Month
Reserved Parking



200 - 4,000 RSF
Offices Available



SASHA DAVID RAHBAN

310.963.9680

sasha@saravitaproperties.com



www.saravitaproperties.com



1081
NATIONAL

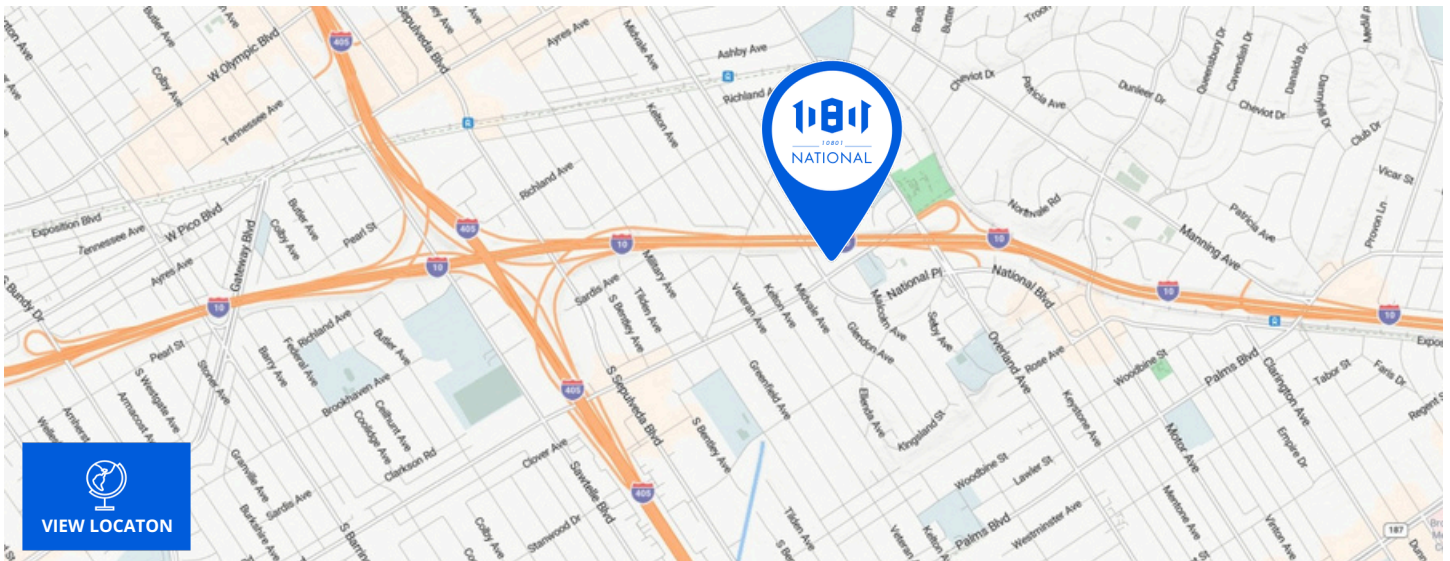
10801 NATIONAL BOULEVARD
LOS ANGELES, CA 90064

PROPERTY INFORMATION

Location:	10801 National Boulevard, Los Angeles, CA 90064
Rental Rate:	Available Upon Request / Negotiable
Occupancy:	Immediate
Lease Type:	Full Service Gross
Tenant Improvements:	Negotiable

FEATURES:

- High Ceilings
- Floor-to-Ceiling Windows
- Flexible Layout
- Great Location for Maximum Exposure
- Remodeled Lobby 24/7 Building Access
- Incredible City Views Recently
- Updated HVAC System
- Subterranean Parking with Low Monthly Rates



SASHA DAVID RAHBAN

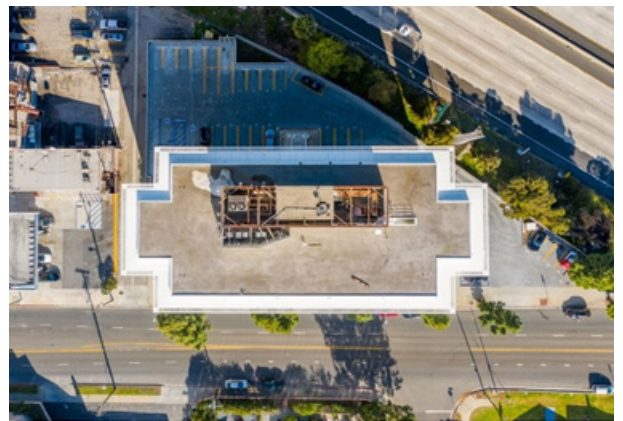
310.963.9680

sasha@saravitaproperties.com



www.saravitaproperties.com

10801 NATIONAL BOULEVARD
LOS ANGELES, CA 90064



SASHA DAVID RAHBAN

📞 310.963.9680

✉️ sasha@saravitaproperties.com

www.saravitaproperties.com



10801 NATIONAL BOULEVARD
LOS ANGELES, CA 90064



SASHA DAVID RAHBAN

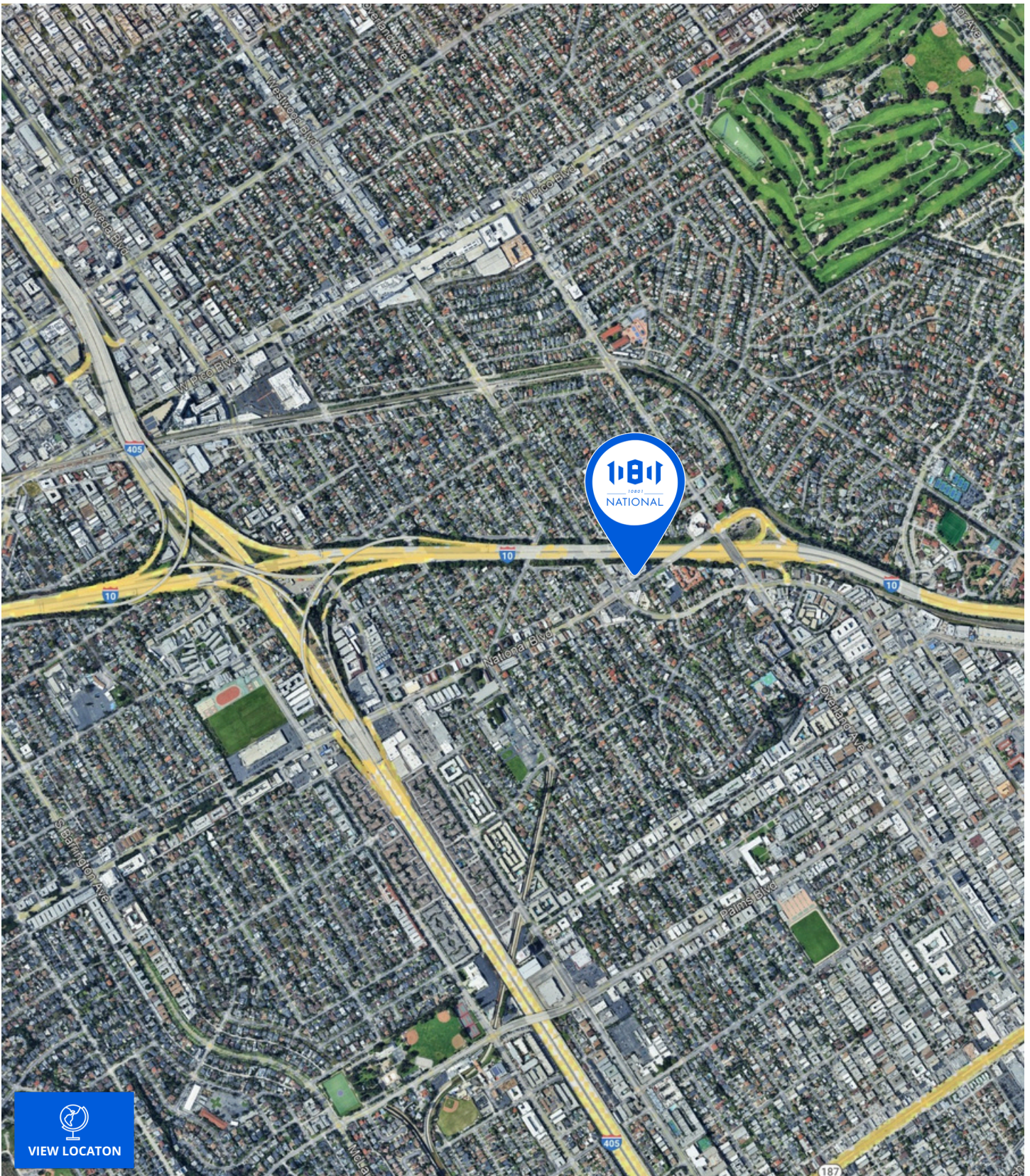
📞 310.963.9680

✉️ sasha@saravitaproperties.com



www.saravitaproperties.com

10801 NATIONAL BOULEVARD
LOS ANGELES, CA 90064



SASHA DAVID RAHBAN

📞 310.963.9680

✉ sasha@saravitaproperties.com



www.saravitaproperties.com

THE LOCATION

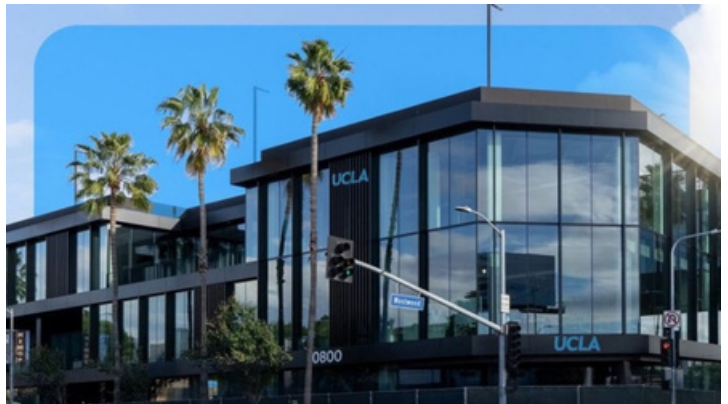
10801 NATIONAL BOULEVARD
LOS ANGELES, CA 90064

West LA welcome to 10801 National Blvd, ideally situated between Culver City and the Pico/Overland corridor, two of Los Angeles' most vibrant and sought-after business hubs. This central Westside location places your team at the intersection of creativity, innovation, and opportunity.

Just blocks from the former Westside Pavilion, soon to be home to a major new UCLA research and innovation campus, this location positions your business at the heart of LA's rapidly evolving tech and academic ecosystem. Join a thriving professional community surrounded by industry leaders such as Google, Amazon Studios, Apple, and Sony Pictures, all just minutes from your doorstep. Whether you're in tech, media, design, or scaling a fast-growing startup, this location offers unrivaled access to the companies and talent shaping the future of LA.

Commuters will benefit from easy access to the 10 and 405 freeways, along with a variety of convenient transit options. With an abundance of cafes, restaurants, and retail destinations nearby, your team will stay energized, connected, and inspired throughout the workday.

10801 National Blvd isn't just an address, it's a launchpad for collaboration, culture, and sustained growth.



SASHA DAVID RAHBAN

📞 310.963.9680

✉️ sasha@saravitaproperties.com



www.saravitaproperties.com

YOUR ONE - STOP SHOP

10801 NATIONAL BOULEVARD
LOS ANGELES, CA 90064

A FULLY- INTEGRATED VERTICAL IN-HOUSE PLATFORM

Saravita Properties features best-in-class services for your commercial real estate needs.



LEASING

At SaraVita Properties, Inc., our leasing team is not only focused on finding the right fit for each tenant but also brings extensive experience in successfully closing hundreds of lease transactions. With a proven ability to navigate and facilitate the challenges that often arise during lease negotiations, we offer a seamless and efficient process for both landlords and tenants.

SPACE PLANNING

We take a personalized approach to space planning, working closely with tenants to design interiors that reflect their specific needs. Our experienced team collaborates throughout the process to create thoughtful, efficient, and functional workspaces.



CONSTRUCTION

Saravita Properties is committed to delivering high-quality work environments. Our experienced team manages the entire process—from permits to construction—ensuring each project is completed with precision and care.



SERVICE

At Saravita Properties, exceptional customer service is at the heart of what we do. From the warm welcome of our on-site security to the attentive support of our property management team, we're dedicated to creating a positive experience for every tenant.

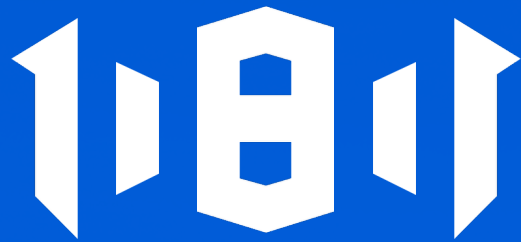
SASHA DAVID RAHBAN

📞 310.963.9680

✉️ sasha@saravitaproperties.com

www.saravitaproperties.com





— 10801 —
NATIONAL

**10801 NATIONAL BOULEVARD
LOS ANGELES, CA 90064**



FOR MORE INFORMATION PLEASE CONTACT

SASHA DAVID RAHBAN

☎ 310.963.9680

✉ sasha@saravitaproperties.com
DRE#01849286



www.saravitaproperties.com