

576 WEST 3RD STREET

SPRINGFIELD, GA 31329

PROPERTY HIGHLIGHTS

- +/- 1.4 Acres
- Commercial Zoning
- Visibility on Highway 21
- Please inquire for more information

TRAFFIC COUNTS	VEHICLES / DAY
Highway 21	15,400

DEMOGRAPHICS	2 MILES	5 MILES	10 MILES
Total Households	1,754	5,160	17,719
Total Population	4,050	13,418	47,026
Average HH Income	\$68,092	\$88,759	\$82,681

[Google Maps Link](#)



For More Information

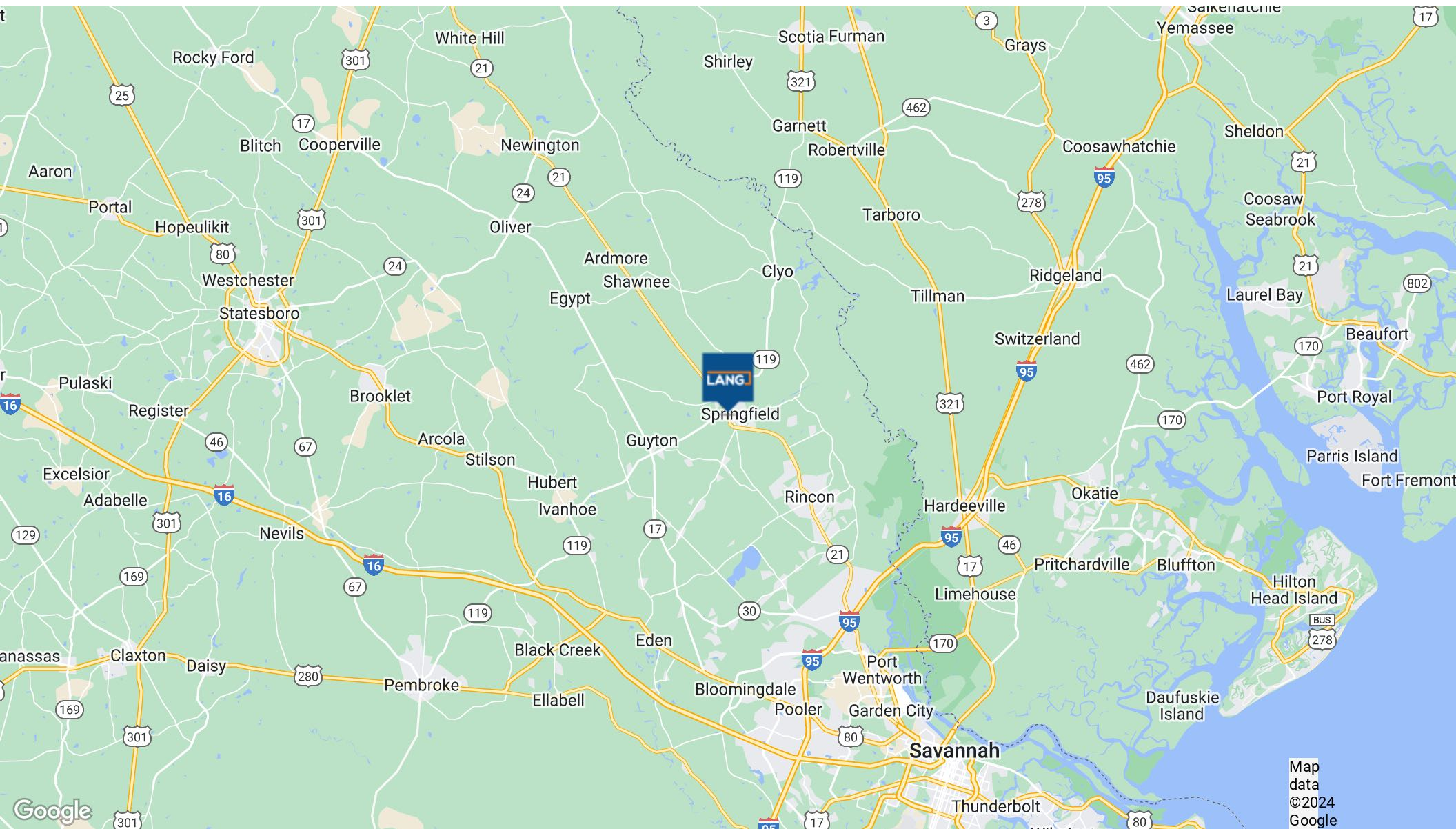
JACOB LANG

912.358.1166 x101
Jacob@LangCRE.com

MARK SOLARSKI

912.358.1166 x102
Mark@LangCRE.com

LANGCRE.COM

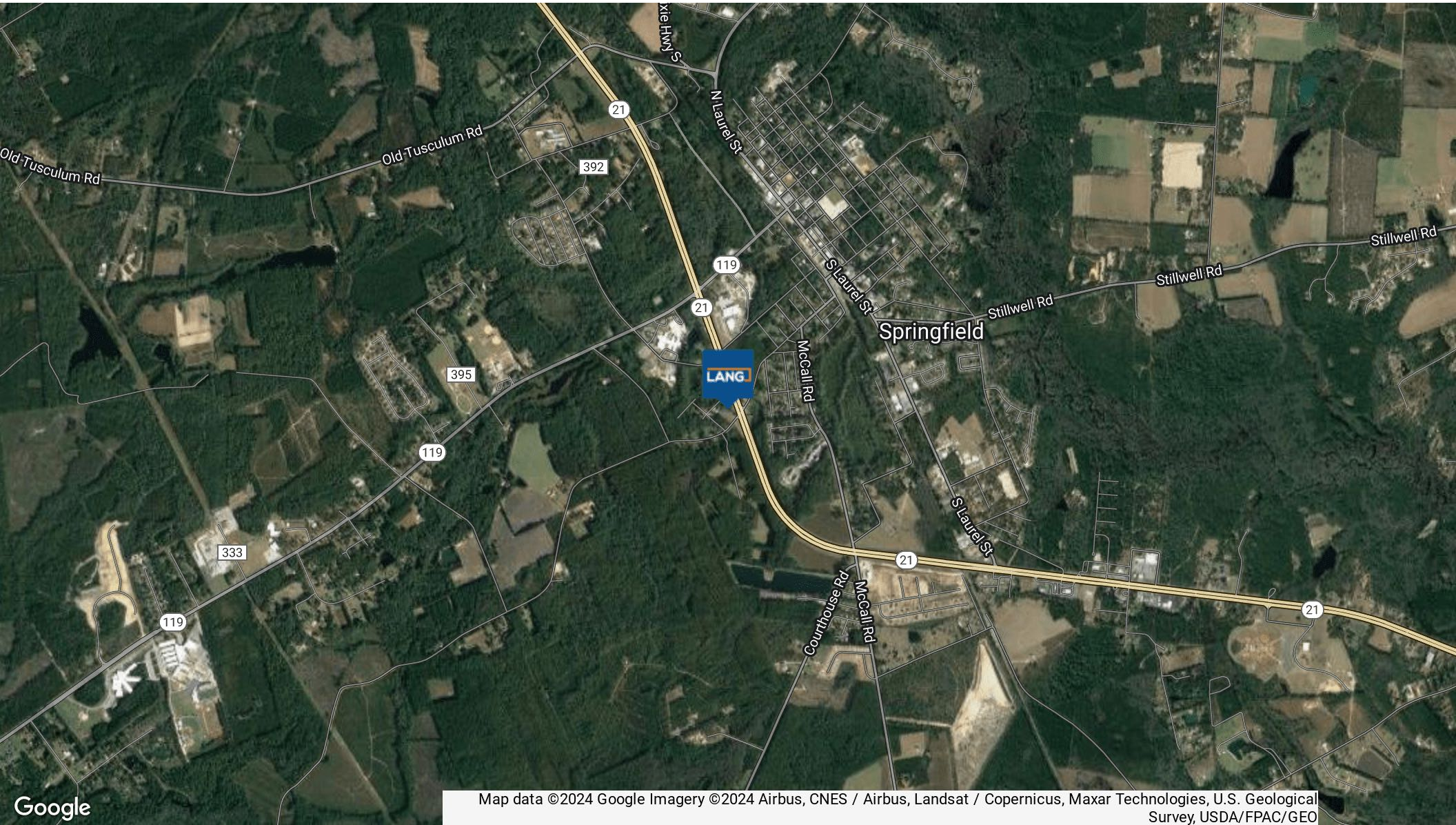


Map data ©2024 Google

JACOB LANG
912.358.1166 x101
Jacob@LangCRE.com

MARK SOLARSKI
912.358.1166 x102
Mark@LangCRE.com

LOCATION MAP



Map data ©2024 Google Imagery ©2024 Airbus, CNES / Airbus, Landsat / Copernicus, Maxar Technologies, U.S. Geological Survey, USDA/FPAC/GEO

JACOB LANG
912.358.1166 x101
Jacob@LangCRE.com

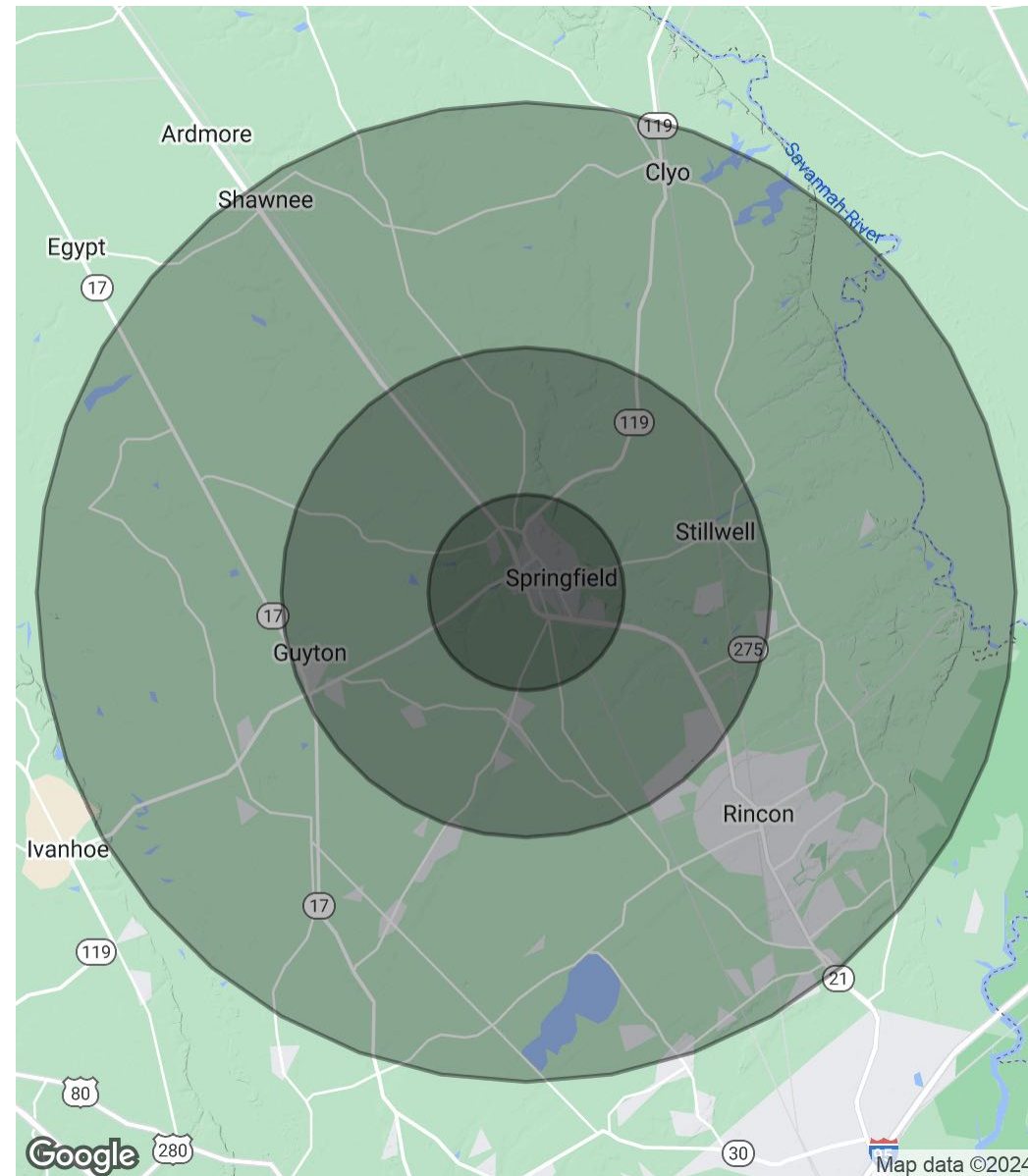
MARK SOLARSKI
912.358.1166 x102
Mark@LangCRE.com

REGIONAL MAP

POPULATION	2 MILES	5 MILES	10 MILES
Total Population	4,050	13,418	47,026
Average Age	34.3	35.3	35.4
Average Age (Male)	34.9	35.4	34.6
Average Age (Female)	33.5	35.1	36.2

HOUSEHOLDS & INCOME	2 MILES	5 MILES	10 MILES
Total Households	1,754	5,160	17,719
# of Persons per HH	2.3	2.6	2.7
Average HH Income	\$68,092	\$88,759	\$82,681
Average House Value	\$170,844	\$168,828	\$178,130

* Demographic data derived from 2020 ACS - US Census



JACOB LANG
 912.358.1166 x101
 Jacob@LangCRE.com

MARK SOLARSKI
 912.358.1166 x102
 Mark@LangCRE.com