

For Sale



640 N Heartland Dr

Sugar Grove, Illinois 60554

PROPERTY HIGHLIGHTS

This 10,400 SF building is located in the Western Suburbs with convenient access to IL Rt. 56 and I-88. Offers two drive-in doors and access to common dock. Ample renovated office space.

¼ acre of yard space.



10,400 SF
AVAILABLE



1.20 / 1,000 SF
PARKING RATIO



22' CLEAR CEILING
HEIGHT



900 SF OF OFFICE



2 DRIVE-IN DOORS
1 DOCK DOOR



EASILY ACCESSIBLE
TO Rt 56 & I-88

Contact

Doug Altenberger

+1 630 693 0699

daltenberger@hiffman.com

One Oakbrook Terrace
Suite 400
Oakbrook Terrace, Illinois 60181
+1 630 932 1234

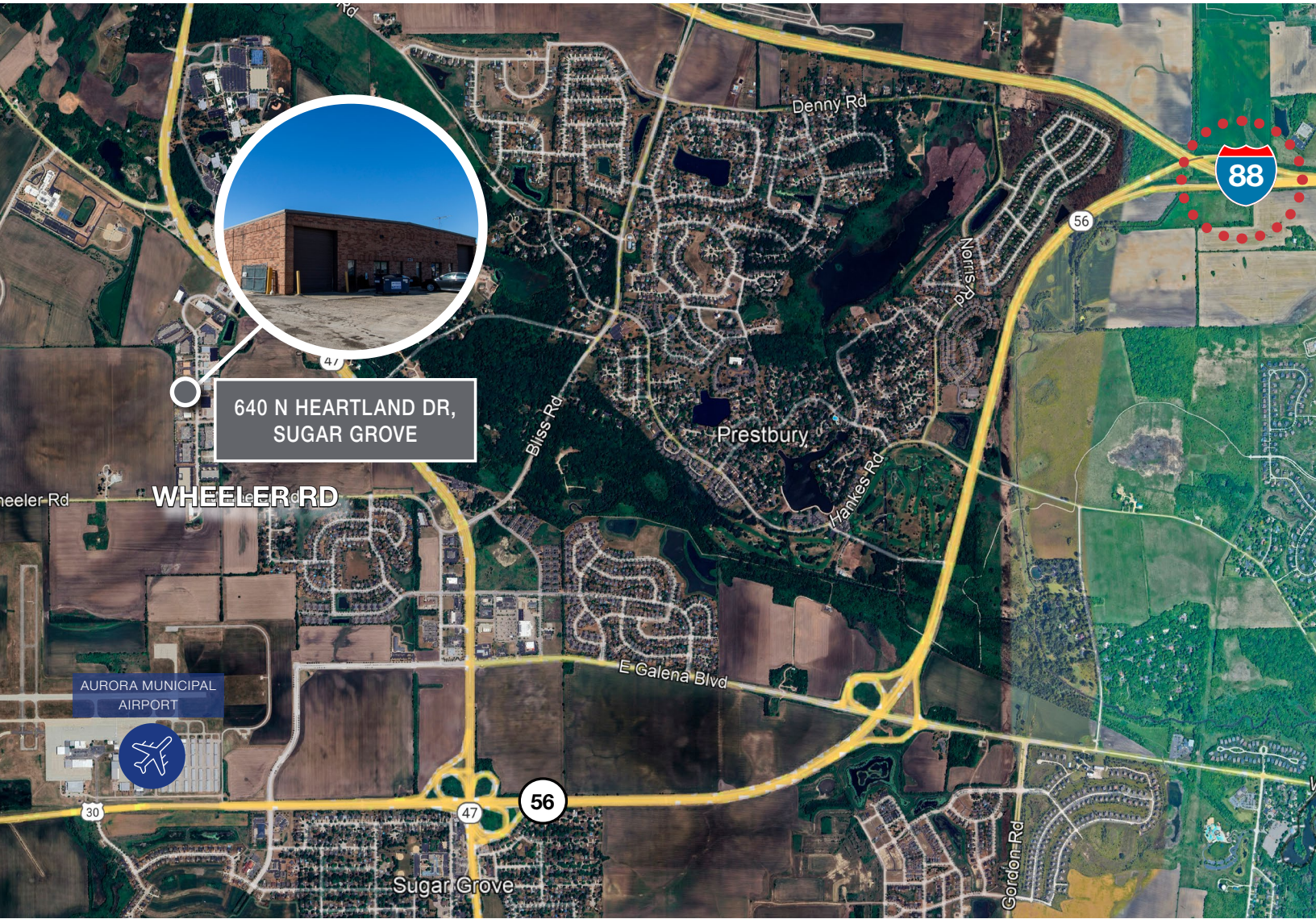




INDUSTRIAL SPACE AVAILABLE
10,400 SF FOR SALE/LEASE

DEMOGRAPHICS

	POPULATION	# of HH	HH INCOME
2 MILES	7,712	2,695	\$141,083
5 MILES	28,811	10,315	\$133,348
10 MILES	296,982	101,262	\$110,891





Doug Altenberger

630 693 0699

daltenberger@hiffman.com



ONE OAKBROOK TERRACE SUITE 400
OAKBROOK TERRACE IL 60181

HIFFMAN.COM
630 932 1234