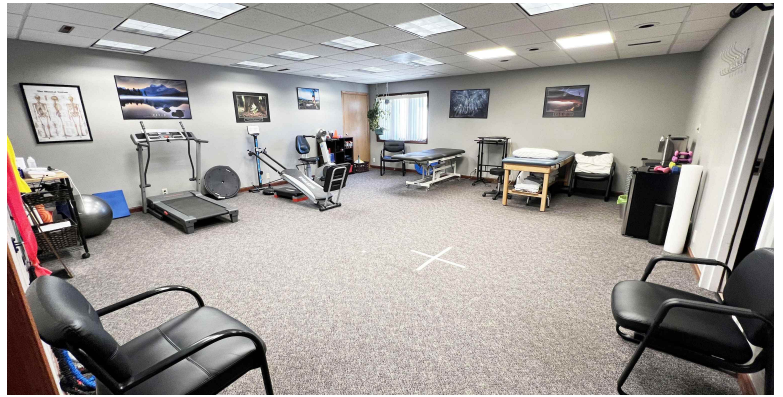


FOR LEASE

OFFICE SPACE

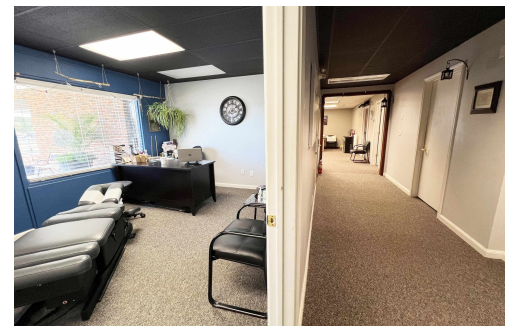
405 E. Omaha St Ste E
Rapid City, SD 57701



This high traffic, high visibility office suite within the larger office building at 405 E Omaha St recently featured a physical therapy space. It offers a large open area supported by three offices, a larger office, and a restroom. Omaha St is the primary East/West corridor through Rapid City and has one of the highest traffic counts in the city. The ease of access to the site, coupled with the large parking lot and adjacent bus stop, makes this a great choice for your business! The large monument sign at the front of the lot is ready to display your business name today! Some flexibility in the layout is available. Inquire. The 1187sf space is currently listed at \$14.95sf base plus NNN, which totals \$1,750/mo. Utilities are currently included in the base rent.



\$14,95sf base plus NNN
4 Office spaces



RANDY OLIVIER, CCIM
Commercial and Residential Broker

605.430.6246 (cell)
605.343.7653 (office)
randyolivier@remax.net
<https://randyolivier.remax.com>
RE/MAX Advantage, Rapid City SD

