

3612 E. 2ND STREET
EDMOND, OK 73034

Land For Sale

4,080 SF on 1.72 Acres MOL

Sales Price: \$1,350,000

NAIRED

COMMERCIAL
REAL ESTATE

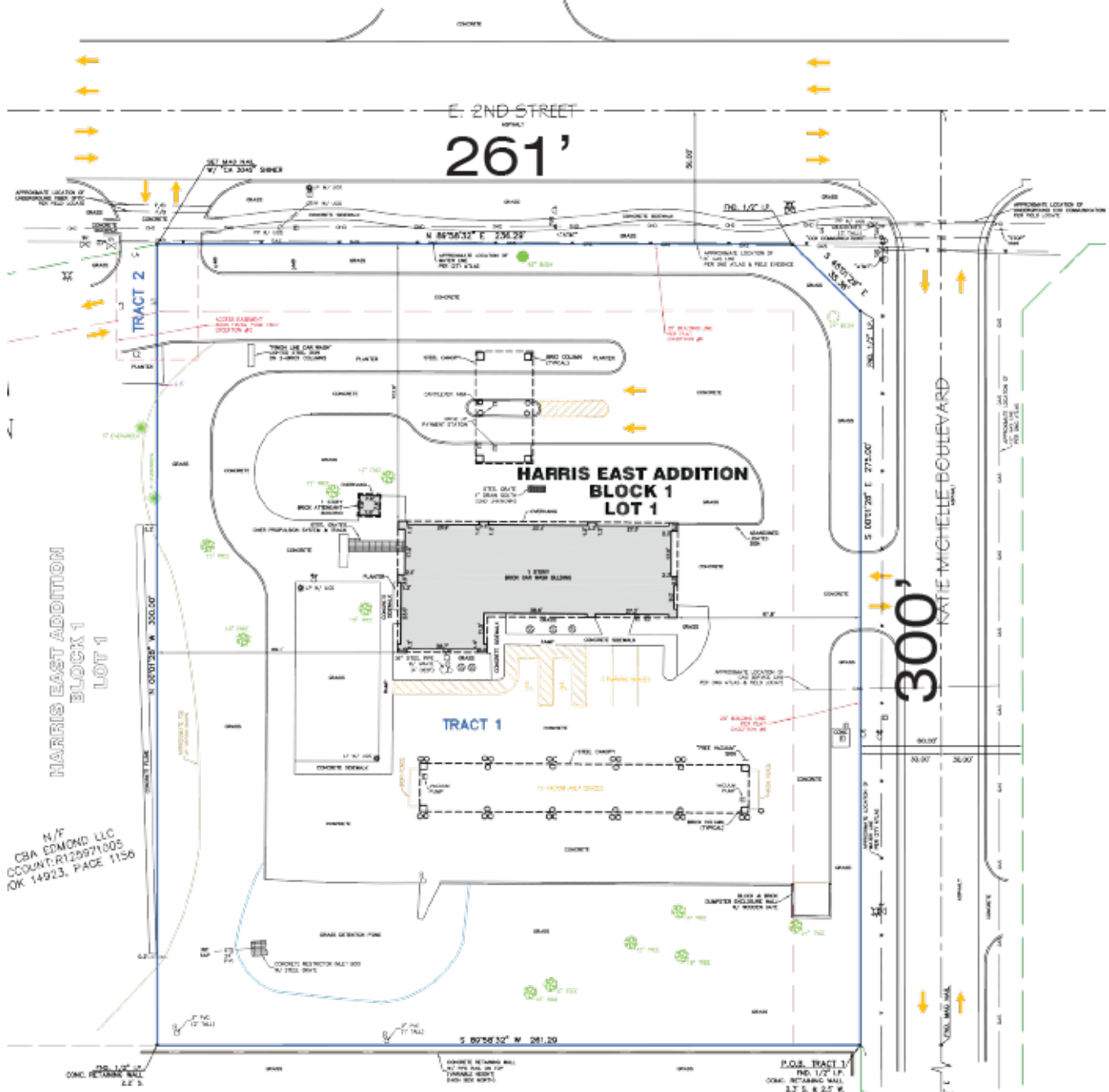


NAIRED

405.840.0600
NAIRED.COM

DAVID HARTNACK
405.761.8955
DAVID@NAIRED.COM

SAM SWANSON
405.208.2046
SAM@NAIRED.COM



PROPERTY HIGHLIGHTS

- Built in 2005
- Zoned: E-1
- Busy 2nd Street Retail Corridor
- Building Can Be Used for Re-Development

NAIRED

405.840.0600
NAIRED.COM

DAVID HARTNACK
405.761.8955
DAVID@NAIRED.COM

SAM SWANSON
405.208.2046
SAM@NAIRED.COM

NAIRED

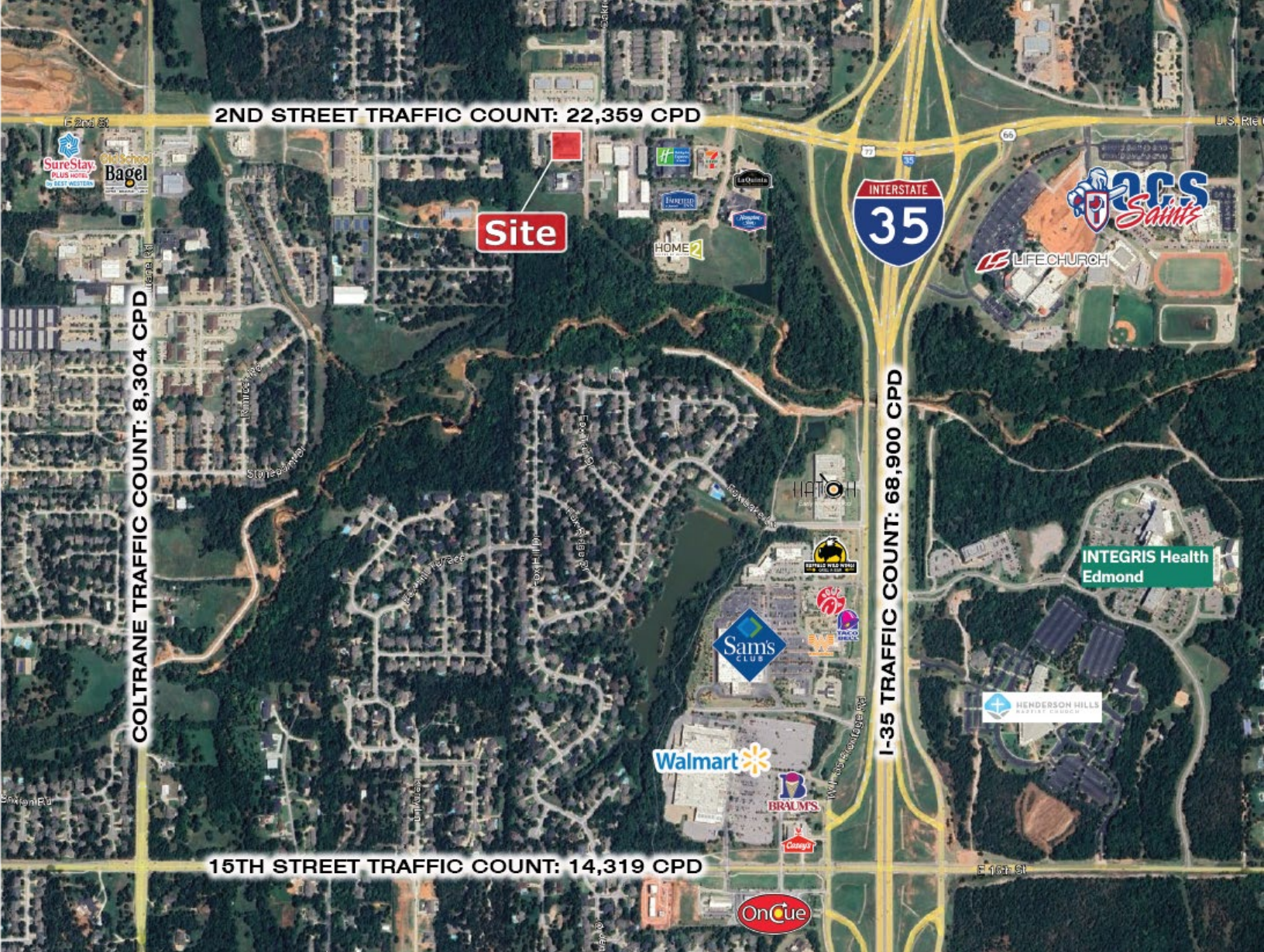
DAVID HARTNACK
405.761.8955
DAVID@NAIRED.COM

SAM SWANSON
405.208.2046
SAM@NAIRED.COM

[illegible][illegible]

1 CONCEPTUAL FLOOR PLAN - OPTION 2
SCALE: 1/4" = 1'-0"

CARWASH CONVERSION FEASIBILITY STUDY
QUAIL SPRINGS CULINARY GROUP



DEMOGRAPHICS

	1 MILE	3 MILE	5 MILE
POPULATION	4,231	41,529	96,406
AVERAGE HOUSEHOLD INCOME	\$150,238	\$118,109	\$115,397
TOTAL HOUSEHOLDS	1,588	16,493	37,285

NAIRED

405.840.0600
NAIRED.COM

FOLLOW US @NAIRED_CRE



No warranty or representation, express or implied, is made as to the accuracy of the information contained herein, and the same is submitted subject to errors, omissions, change of price, rental or other conditions, prior to sale, lease, or financing, or withdrawal without notice, and of any special listing conditions imposed by our principals no warranties or representations are made as to the condition of the property or any hazards contained therein are any to be implied.