

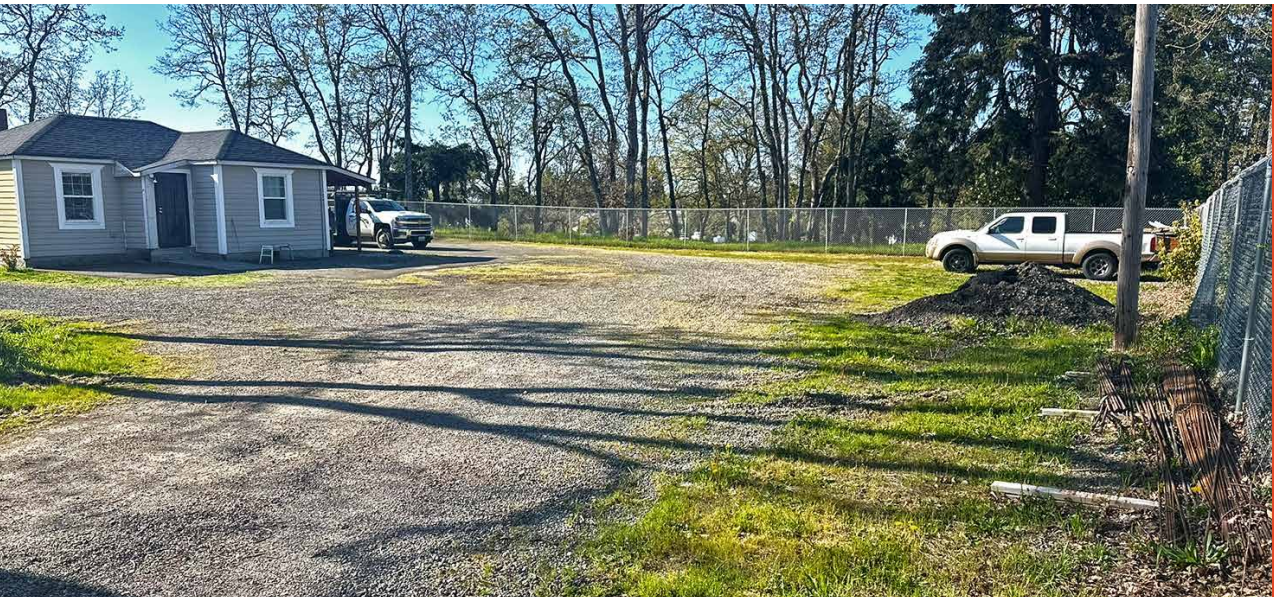
FOR LEASE

CONTRACTOR YARD AND OFFICE

3261 96TH ST S, LAKEWOOD WA

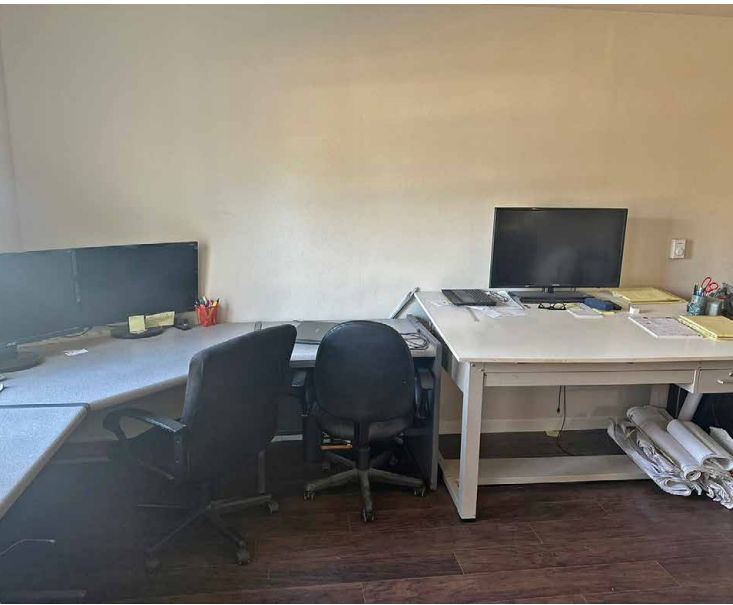
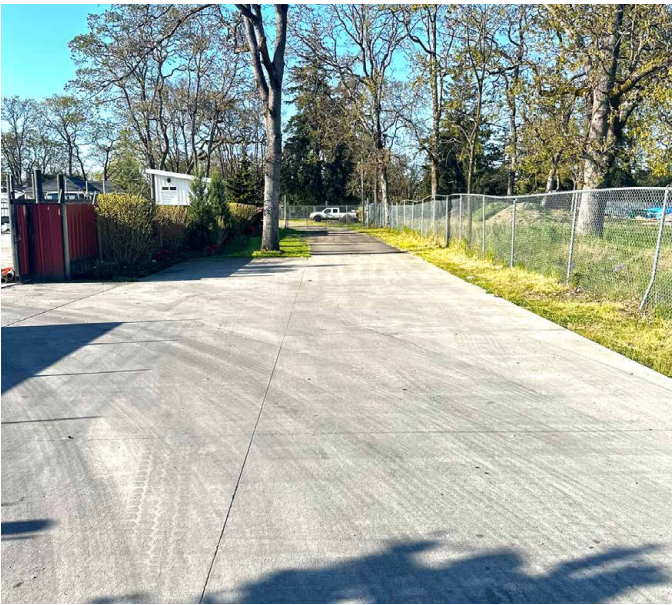
KIDDER.COM

km Kidder
Mathews



Property Features

LEASE RATE	\$6,750/Month, NNN
TAX PARCEL	0320317001
LOT SIZE	0.51 AC (22,216 SF)
BUILDING SF	561 SF Office
CONSTRUCTION TYPE	Wood frame
YEAR BUILT	1938/Adjusted 1981
PARKING SPACES	Ample on graveled lot
YARD	Fully fenced yard
GARAGE	Detached garage available
HVAC	Electric baseboard
ZONING	East Dupont Garden Way District
GENERALLY ALLOWED USES	This is a neighborhood-specific zoning code that sets rules for development within the East Dupont Garden Way area. It may include specific requirements for things like building setbacks, lot coverage, and architectural styles to maintain the unique character of the neighborhood







3261 96TH ST S

*For more information on
this property, please contact*

BRUCE BARKER, CCIM, MBA
253.722.1459
bruce.barker@kidder.com

HUNTER CLARKE
253.722.1454
hunter.clarke@kidder.com

KIDDER.COM

This information supplied herein is from sources we deem reliable. It is provided without any representation, warranty, or guarantee, expressed or implied as to its accuracy. Prospective Buyer or Tenant should conduct an independent investigation and verification of all matters deemed to be material, including, but not limited to, statements of income and expenses. Consult your attorney, accountant, or other professional advisor. All Kidder Mathews designs are the sole property of Kidder Mathews. Branded materials and layouts are not authorized for use by any other firm or person.

