



Lease Rate

NEGOTIABLE

OFFERING SUMMARY

Building Size:	16,890 SF
Available SF:	3,510 - 11,560 SF
Zoning:	C1 -Neighborhood Business

PROPERTY OVERVIEW

Centrally located a few blocks from UAH, just off of University Drive behind Taco Bell, Schlotzsky's and Bojangles.

DEMOGRAPHICS	1 MILE	3 MILES	5 MILES
Total Households	3,452	22,741	46,829
Total Population	8,407	55,607	112,486
Average HH Income	\$35,272	\$40,025	\$48,313

Alex Samples

Agent, CCIM

256.533.0003

alex@samplesproperties.com

525 Madison Street | Suite 205 | Huntsville, AL 35801

www.samplesproperties.com

The terms, prices and floor plans may change without notice. All information provided was acquired from the owner or reliable sources, however, Samples Properties is not responsible for typographical errors or erroneous information deemed accurate at the time of publication.



Alex Samples

Agent, CCIM

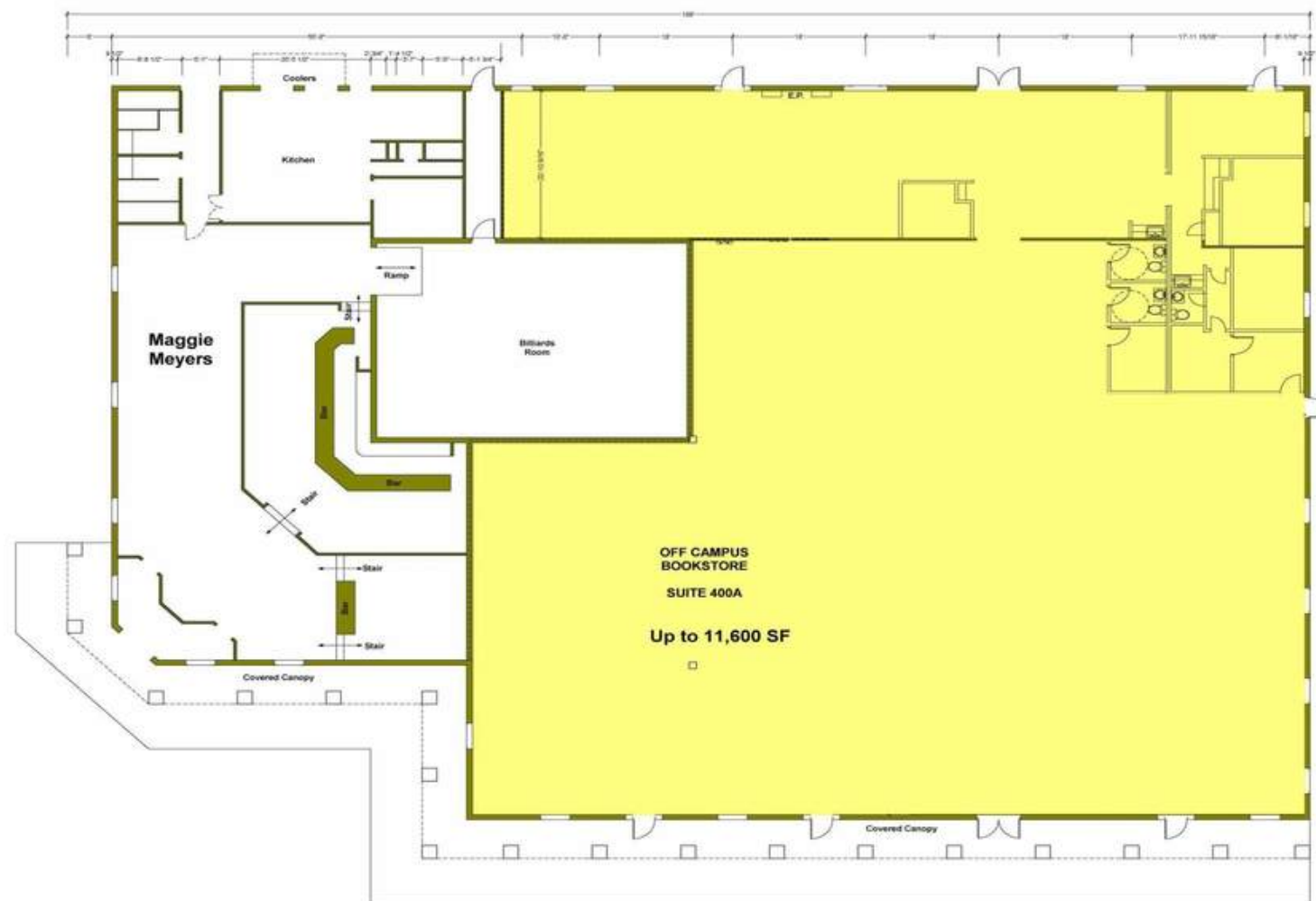
256.533.0003

alex@samplesproperties.com

525 Madison Street | Suite 205 | Huntsville, AL 35801

The terms, prices and floor plans may change without notice. All information provided was acquired from the owner or reliable sources, however, Samples Properties is not responsible for typographical errors or erroneous information deemed accurate at the time of publication.

www.samplesproperties.com



Alex Samples

Agent, CCIM

256.533.0003

alex@samplesproperties.com

525 Madison Street | Suite 205 | Huntsville, AL 35801

www.samplesproperties.com

The terms, prices and floor plans may change without notice. All information provided was acquired from the owner or reliable sources, however, Samples Properties is not responsible for typographical errors or erroneous information deemed accurate at the time of publication.



Alex Samples

Agent, CCIM

256.533.0003

alex@samplesproperties.com

525 Madison Street | Suite 205 | Huntsville, AL 35801

www.samplesproperties.com

The terms, prices and floor plans may change without notice. All information provided was acquired from the owner or reliable sources, however, Samples Properties is not responsible for typographical errors or erroneous information deemed accurate at the time of publication.