

AVISON
YOUNG

Office/Retail building for lease



3 JERVEY AVENUE
GREENVILLE, SOUTH CAROLINA

Get more information

Chris Prince
Vice President
+1 864 430 4957
chris.prince@avisonyoung.com

Ned Reynolds
Vice President
+1 336 260 3148
ned.reynolds@avisonyoung.com

Property overview

PROPERTY HIGHLIGHTS

Discover an exceptional space tailored for your business needs! This prime office or retail location boasts a strategic position in the bustling Laurens Road trade corridor, offering exposure to a robust demographic base. Perfect for small businesses seeking a vibrant setting. Enjoy ample parking with a generous ratio of 7 spaces per 1,000 sq ft. Elevate your business in a thriving community.

LOCATION

Located one building back from Laurens Rd with a traffic count of 24,000 VPD, and across from Pleasantburg Shopping Center and W. Antrim Dr.

PROPERTY INFORMATION

Address	3 Jervey Avenue
City	Greenville
County	Greenville
Building size	2,400 sf
Lot acreage	.234
Zoning	MX-2
Parking spaces	19
Asking Rate	\$20.00/sf
Lease Type	NNN
Date Available	Now



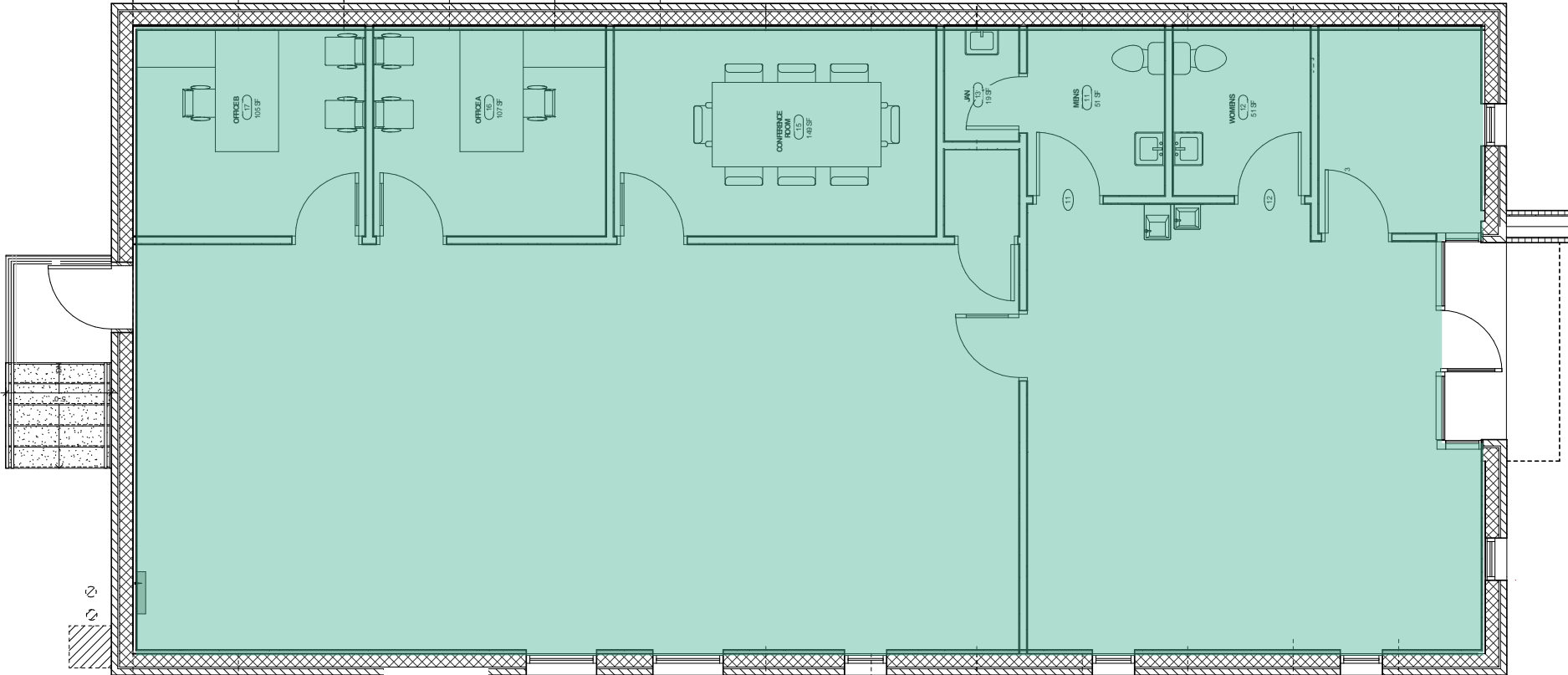
located at Jervey Avenue & Laurens Road, near Swamp Rabbit Trail



Photos



Floor plan



Location



RESTAURANTS

1. Willy Taco - Feed & Seed
2. Rocky's Hot Chicken Shack
3. Palmetto Fine Foods
4. Boondock's Brews & Cues
5. Warehouse at Midtown Food Hall
6. Kitchen Sync
7. Schwaben House
8. Runway Cafe at GMU

SHOPPING

1. The Shops at McBee Station
2. Trek Bicycle Store
3. Army & Navy Store
4. McAlister Square
5. Old Towne Shopping Center
6. The Gallery
7. Haywood Mall
8. Haywood Plaza

RECREATION

1. Sears Recreational Center
2. Cleveland Park
3. Henry Bacon McKoy Park
4. Gower Estates Park
5. Runway Park at GMU



Let's
talk.

Get more information

Chris Prince

Vice President

+1 864 430 4957

chris.prince@avisonyoung.com

Ned Reynolds

Vice President

+1 336 260 3148

ned.reynolds@avisonyoung.com

**AVISON
YOUNG**