

TOK
COMMERCIAL

1626 21ST STREET, LEWISTON

PRIME CORNER LAND FOR SALE | 1622-1626 21ST STREET, LEWISTON, ID 83501

7,246 VPD

SOUTHWAY AVENUE

24,210 VPD

SITE

21ST STREET

17TH AVENUE

PRICE REDUCED!

CONTACT

DON CRAWFORD

208.660.1207

don@tokcommercial.com

DREW ULRICK, SIOR

509.606.5055

drew@tokcommercial.com

BRENNEN CRAWFORD

208.755.0920

brennen@tokcommercial.com

DANNY DAVIS, CCIM

208.691.6003

danny@tokcommercial.com

HIGHLIGHTS

Nearly 1 acre of prime corner land

Ideal 21st Street location for QSR or Retail

High traffic counts with 24,210 VPD

DETAILS

SUBMARKET: Lewiston

LOT SIZE: 0.913 Acres

ZONING: C6

PRICE: \$1,495,000

UPDATED: 1.22.2026

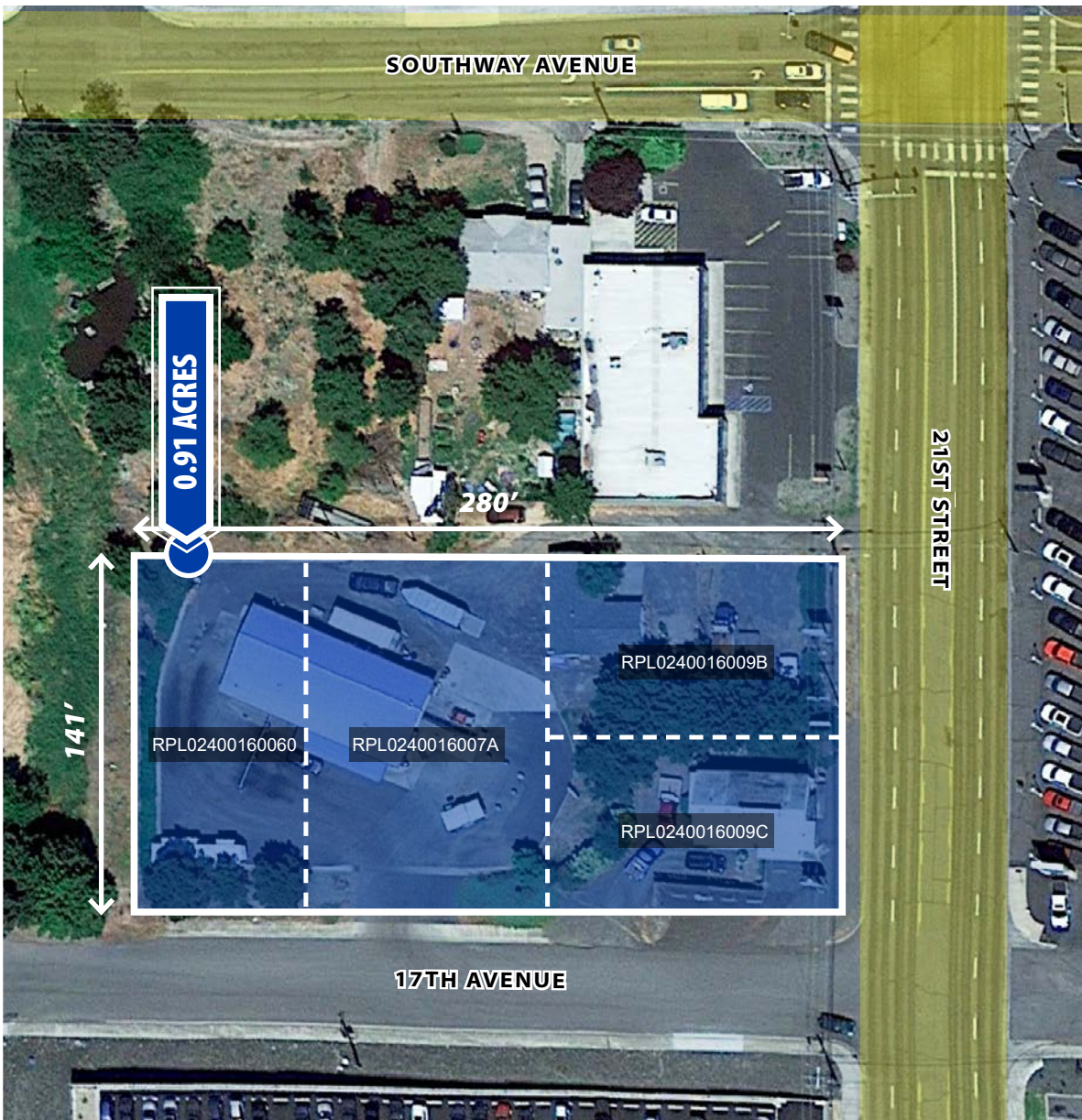
THIS PROPERTY IS EXCLUSIVELY MARKED BY TOK INLAND NORTHWEST LLC DBA TOK COMMERCIAL

This information was obtained from sources believed reliable but cannot be guaranteed. Any opinions or estimates are used for example only.

TOKCOMMERCIAL.COM

21ST STREET, LEWISTON

PRIME CORNER LAND FOR SALE



ZONING DISTRICT **C6 - REGIONAL COMMERCIAL ZONE**

To encourage the establishment of areas for varied types of commercial uses and to meet the needs of the regional market area. Such uses shall be readily accessible from streets designated as principal or minor arterials as shown in the Lewiston Comprehensive Transportation Plan.

 [CLICK FOR MORE INFORMATION](#) 

UPDATED: 1.22.2026

THIS PROPERTY IS EXCLUSIVELY MARKETED BY TOK INLAND NORTHWEST LLC DBA TOK COMMERCIAL

This information was obtained from sources believed reliable but cannot be guaranteed. Any opinions or estimates are used for example only.

TOX

COMMERCIAL

21ST STREET, LEWISTON

LOCATED ON PRIMARY ARTERIAL



TOX

COMMERCIAL

21ST STREET, LEWISTON

SURROUNDED BY HIGH TRAFFIC RETAILERS





UPDATED: 1.22.2026

THIS PROPERTY IS EXCLUSIVELY MARKED BY TOK INLAND NORTHWEST LLC DBA TOK COMMERCIAL
This information was obtained from sources believed reliable but cannot be guaranteed. Any opinions or estimates are used for example only.

21ST STREET, LEWISTON

LOCATED ON PRIMARY ARTERIAL

