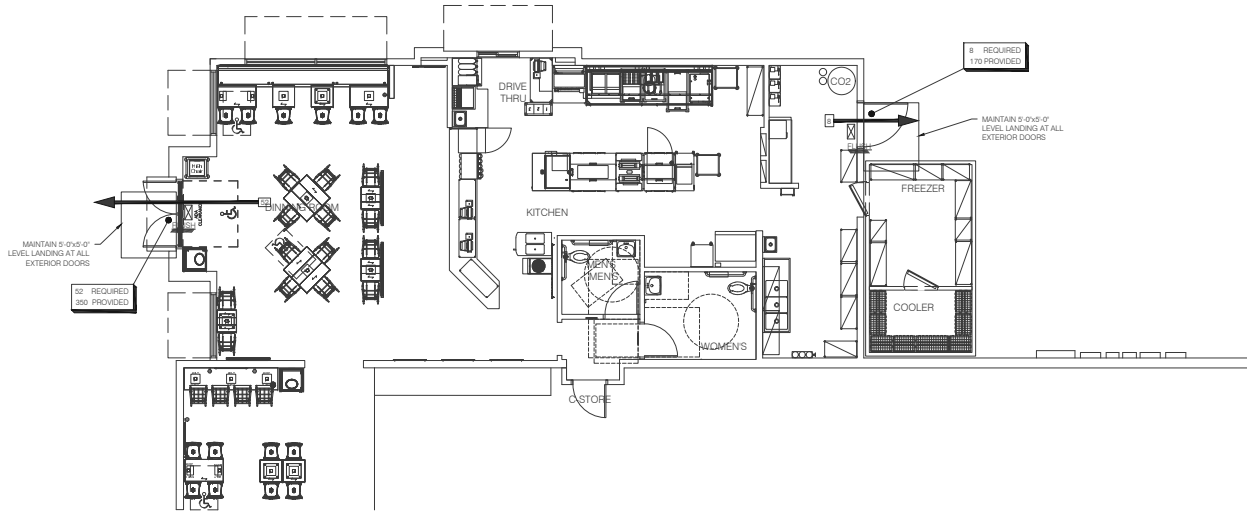


<b>SCOPE OF WORK:</b>		<b>OCCUPANCY TYPE:</b> BURGER KING RESTAURANT		<b>BUILDING USE:</b> RESTAURANT	
RENOVATION OF FORMER TACO BELL INTO A BURGER KING		IFC 2012 - ASSEMBLY (RESTAURANT < 300 OCCUPANTS) IBC 2012 - ASSEMBLY (A-2)		TRAVEL DISTANCE REQUIRED: 200' MAX.	
<b>CODES ENFORCED:</b>				COMMON PATH REQUIRED: 20' MAX.	
<b>FIRE/LIFE SAFETY CODE:</b>	INTERNATIONAL FIRE CODE, 2012 EDITION	<b>OCCUPANCY LOAD ANALYSIS:</b>		DEAD END CORRIDOR: 20' MAX.	
<b>ACCESSIBILITY CODE:</b>	ADAAG, 2010 EDITION	GROSS BUILDING SQUARE FOOTAGE: 1603 S.F.		<b>LEGEND:</b>	
<b>BUILDING CODE:</b>	INTERNATIONAL BUILDING CODE, 2012 EDITION	- ASSEMBLY, UNCONCENTRATED (DINING ROOM) 887 S.F.		■ ILLUMINATED DIECAST EXIT SIGNAGE (CEILING MOUNT)	
<b>STRUCTURAL CODE:</b>	INTERNATIONAL BUILDING CODE, 2012 EDITION	- ASSEMBLY, UNCONCENTRATED (STANDING ROOM) 62 S.F.		□ NUMBER OF OCCUPANTS EXITING THE BUILDING	
<b>PLUMBING CODE:</b>	INTERNATIONAL PLUMBING CODE, 2012 EDITION	- CIRCULATION/KITCHEN/SERVICE 744 S.F.			
<b>MECHANICAL CODE:</b>	INTERNATIONAL MECHANICAL CODE, 2012 EDITION				
<b>ELECTRICAL CODE:</b>	NATIONAL ELECTRICAL CODE, 2012 EDITION				
<b>ENERGY CODE:</b>	INTERNATIONAL ENERGY CONSERVATION CODE, 2012 EDITION				
<b>CODE INFORMATION:</b>		<b>TOTAL OCCUPANT LOAD:</b>		<b>FIRE ALARM:</b>	
BUILDING CONSTRUCTION TYPE:		STANDING AREA (93 SF PER PERSON) = 12		NO FIRE ALARM REQUIRED PER IFC, 2012 EDITION	
NFPA TYPE V (0.3.0) - NON-SPRINKLERED		KITCHEN - 1842 SF PER PERSON = 8			
IBC TYPE VB - NON-SPRINKLERED		DINING AREA - 115 SF PER PERSON = 60			
		TOTAL = 60			



**1 LIFE SAFETY PLAN**  
SCALE: 3/16" = 1'-0"

DATE: 01.12.16
REVISION:
NO. DATE
1 01.12.16
2 01.12.16
3 01.12.16
4 01.12.16
5 01.12.16
6 01.12.16
7 01.12.16
8 01.12.16
9 01.12.16
10 01.12.16
11 01.12.16
12 01.12.16
13 01.12.16
14 01.12.16
15 01.12.16
16 01.12.16
17 01.12.16
18 01.12.16
19 01.12.16
20 01.12.16
21 01.12.16
22 01.12.16
23 01.12.16
24 01.12.16
25 01.12.16
26 01.12.16
27 01.12.16
28 01.12.16
29 01.12.16
30 01.12.16
31 01.12.16
32 01.12.16
33 01.12.16
34 01.12.16
35 01.12.16
36 01.12.16
37 01.12.16
38 01.12.16
39 01.12.16
40 01.12.16
41 01.12.16
42 01.12.16
43 01.12.16
44 01.12.16
45 01.12.16
46 01.12.16
47 01.12.16
48 01.12.16
49 01.12.16
50 01.12.16
51 01.12.16
52 01.12.16
53 01.12.16
54 01.12.16
55 01.12.16
56 01.12.16
57 01.12.16
58 01.12.16
59 01.12.16
60 01.12.16
61 01.12.16
62 01.12.16
63 01.12.16
64 01.12.16
65 01.12.16
66 01.12.16
67 01.12.16
68 01.12.16
69 01.12.16
70 01.12.16
71 01.12.16
72 01.12.16
73 01.12.16
74 01.12.16
75 01.12.16
76 01.12.16
77 01.12.16
78 01.12.16
79 01.12.16
80 01.12.16
81 01.12.16
82 01.12.16
83 01.12.16
84 01.12.16
85 01.12.16
86 01.12.16
87 01.12.16
88 01.12.16
89 01.12.16
90 01.12.16
91 01.12.16
92 01.12.16
93 01.12.16
94 01.12.16
95 01.12.16
96 01.12.16
97 01.12.16
98 01.12.16
99 01.12.16
100 01.12.16

OPINION:  
 THESE DOCUMENTS ARE PROTECTED BY  
 COPYRIGHT AND ALL RIGHTS RESERVED.  
 NO PART OF THESE DOCUMENTS  
 SHOULD BE REPRODUCED OR  
 TRANSMITTED IN ANY FORM OR  
 BY ANY MEANS, ELECTRONIC OR  
 MECHANICAL, INCLUDING  
 PHOTOCOPYING, RECORDING,  
 OR BY ANY INFORMATION  
 STORAGE AND RETRIEVAL  
 SYSTEM, WITHOUT THE  
 WRITTEN PERMISSION OF  
 THE ARCHITECT.  
 REPRODUCTION OF THESE DOCUMENTS  
 WITHOUT THE WRITTEN  
 PERMISSION OF THE ARCHITECT  
 IS STRICTLY PROHIBITED.  
 ALL RIGHTS ARE RESERVED TO THE ARCHITECT.

**BURGER KING CORPORATION**  
 RESTAURANT REMODEL FOR:  
**DOSSANI PARADISE INVESTMENTS**



**IA ARCHITECTURE**

20/20 "STANDARD" REMODEL  
 BURGER KING #0000  
 1618 State Hwy. 50, COMMERCE, TX. 75428  
**LIFE SAFETY PLAN**