

2324 – 2338 MORRISSEY AVE.
WARREN, MICHIGAN

INDUSTRIAL FOR LEASE
8,218 Square Feet Available



**SIGNATURE
ASSOCIATES**
KNOW SIGNATURE | KNOW RESULTS

EXCELLENT CONDITION



PROPERTY FEATURES

- 8,218 square feet available
- 1,000 square feet office
- 15' clear height
- (1) 12' x 14' grade level door, (1) truckwell
- Very clean building with updated lighting, newer HVAC, 60' clear span, and fenced yard
- Central location, close to I-696 and I-75 interchange
- Half of the building is available
- Racking potentially available
- Lease Rate: \$6.75/sq. ft. NNN



For more information, please contact:

GARY STEPHENS
(248) 948 0104

gstephens@signatureassociates.com

BEN WILKIEMEYER
(248) 359 0624

bwilkiemeyer@signatureassociates.com

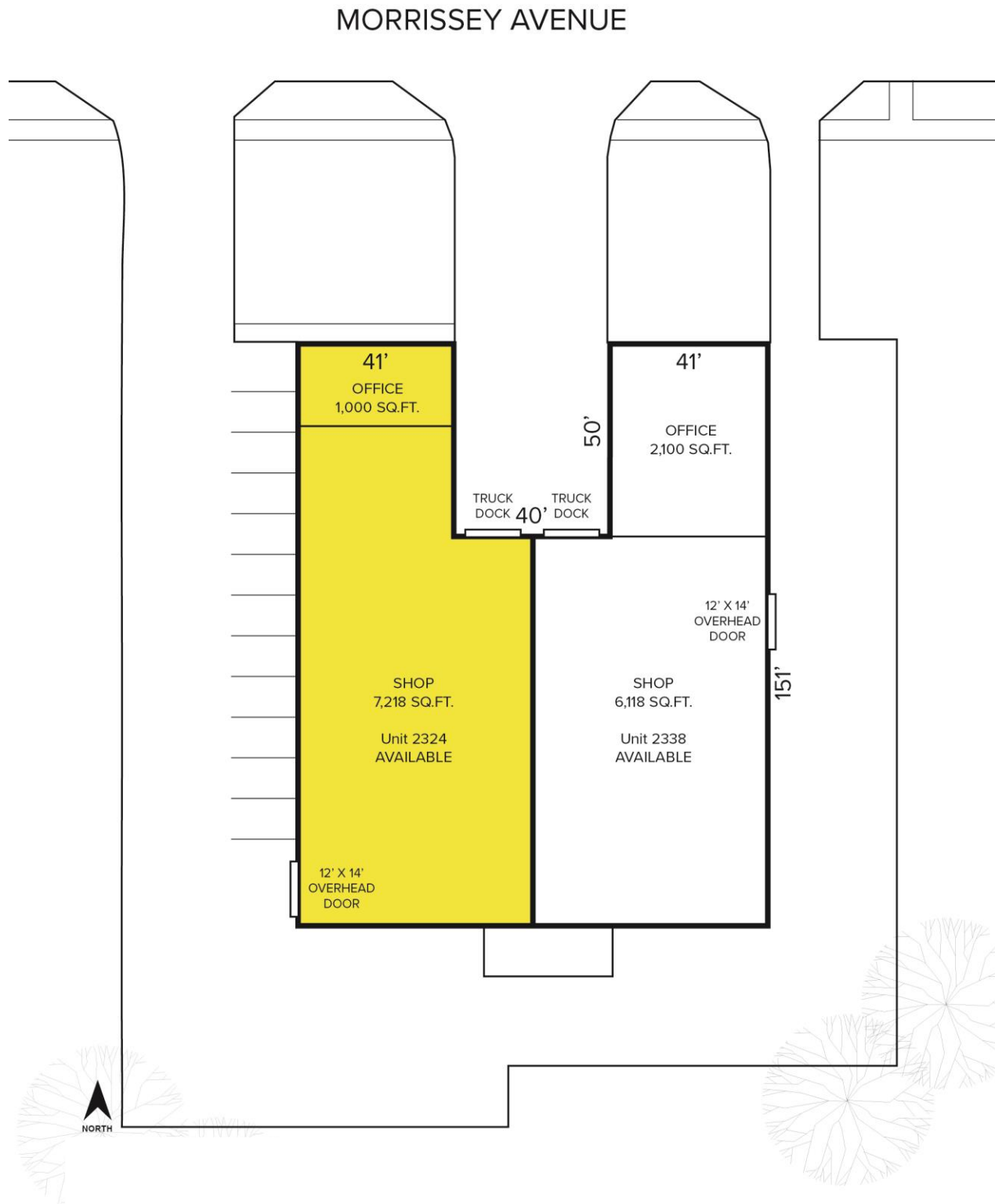
SIGNATURE ASSOCIATES
One Towne Square, Suite 1200
Southfield, MI 48076
www.signatureassociates.com

2324-2338 Morrissey Avenue – Warren, Michigan

Industrial For Lease

8,218
Square Feet
AVAILABLE

Site Plan



For more information, please contact:

GARY STEPHENS

(248) 948 0104

gstephens@signatureassociates.com

BEN WILKIEMEYER

(248) 359 0624

bwilkiemeyer@signatureassociates.com

SIGNATURE ASSOCIATES

One Towne Square, Suite 1200

Southfield, MI 48076

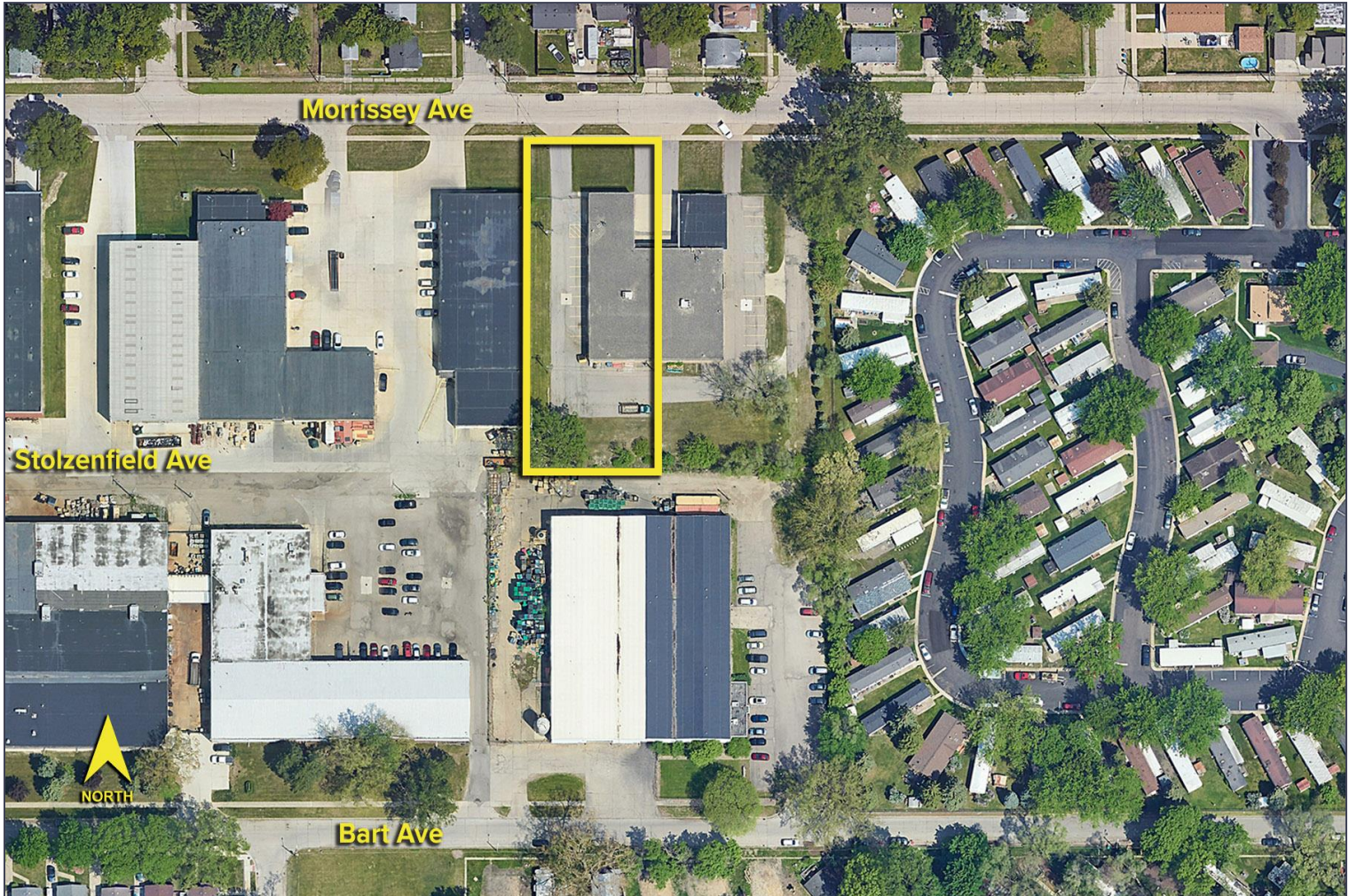
www.signatureassociates.com

2324-2338 Morrissey Avenue – Warren, Michigan

Industrial For Lease

8,218
Square Feet
AVAILABLE

Aerial



For more information, please contact:

GARY STEPHENS
(248) 948 0104

gstephens@signatureassociates.com

BEN WILKIEMEYER
(248) 359 0624

bwilkiemeyer@signatureassociates.com

SIGNATURE ASSOCIATES
One Towne Square, Suite 1200
Southfield, MI 48076
www.signatureassociates.com

Information is subject to verification and no liability for errors or omissions is assumed. Price is subject to change and listing withdrawal.