

NOTES

REVISIONS

MARK	DATE	INITIAL

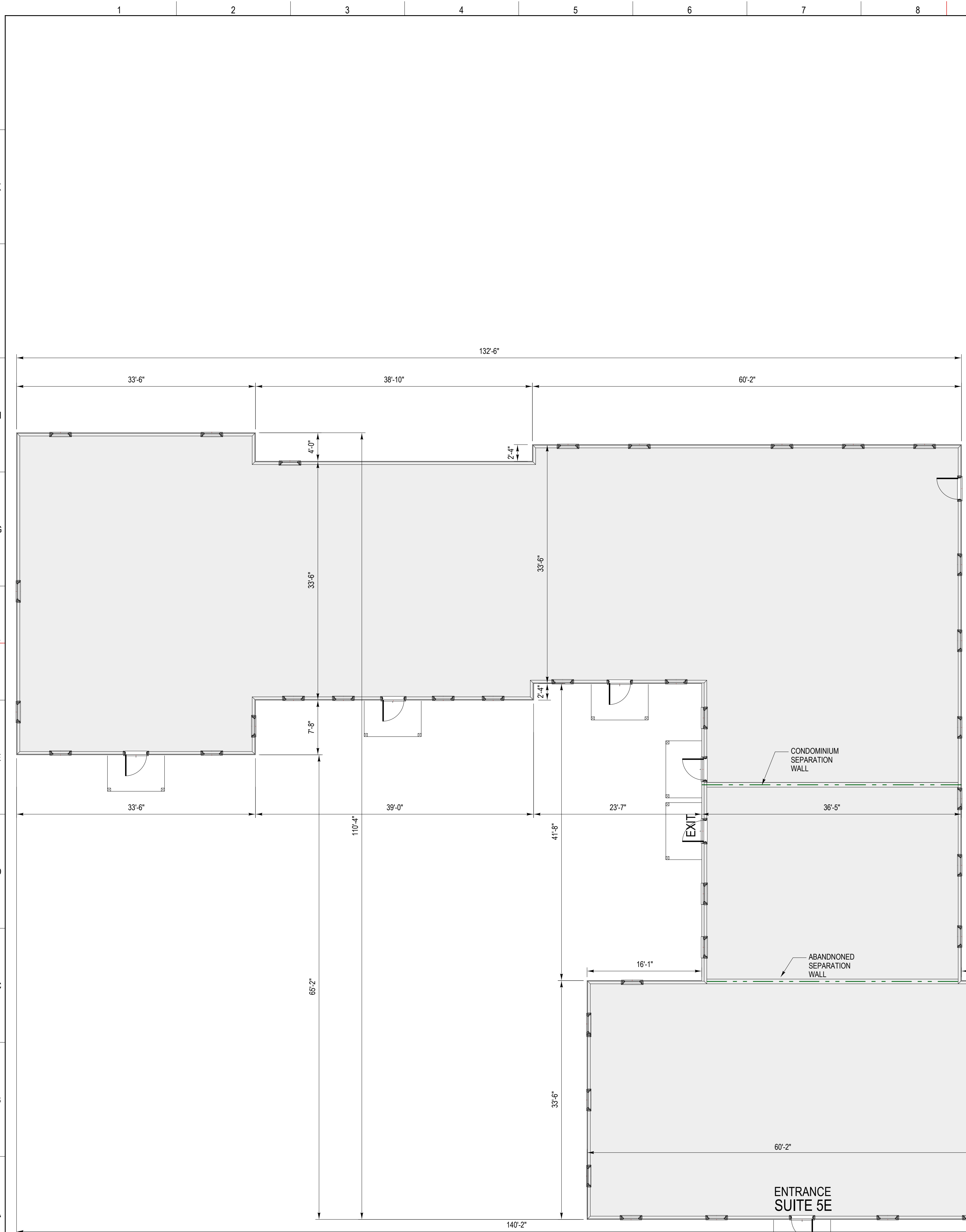
PROJECT  
**EXISTING CONDITIONS FOR  
729 THIMBLE SHOALS BLVD  
SUITE 5E  
McCALE PROFESSIONAL PARK  
NEWPORT NEWS, VIRGINIA**

Project No.	2416.02
Date	02.19.24
Scale	NOTED
Designed	RBC
Drawn	RBC EP
Checked	RBC

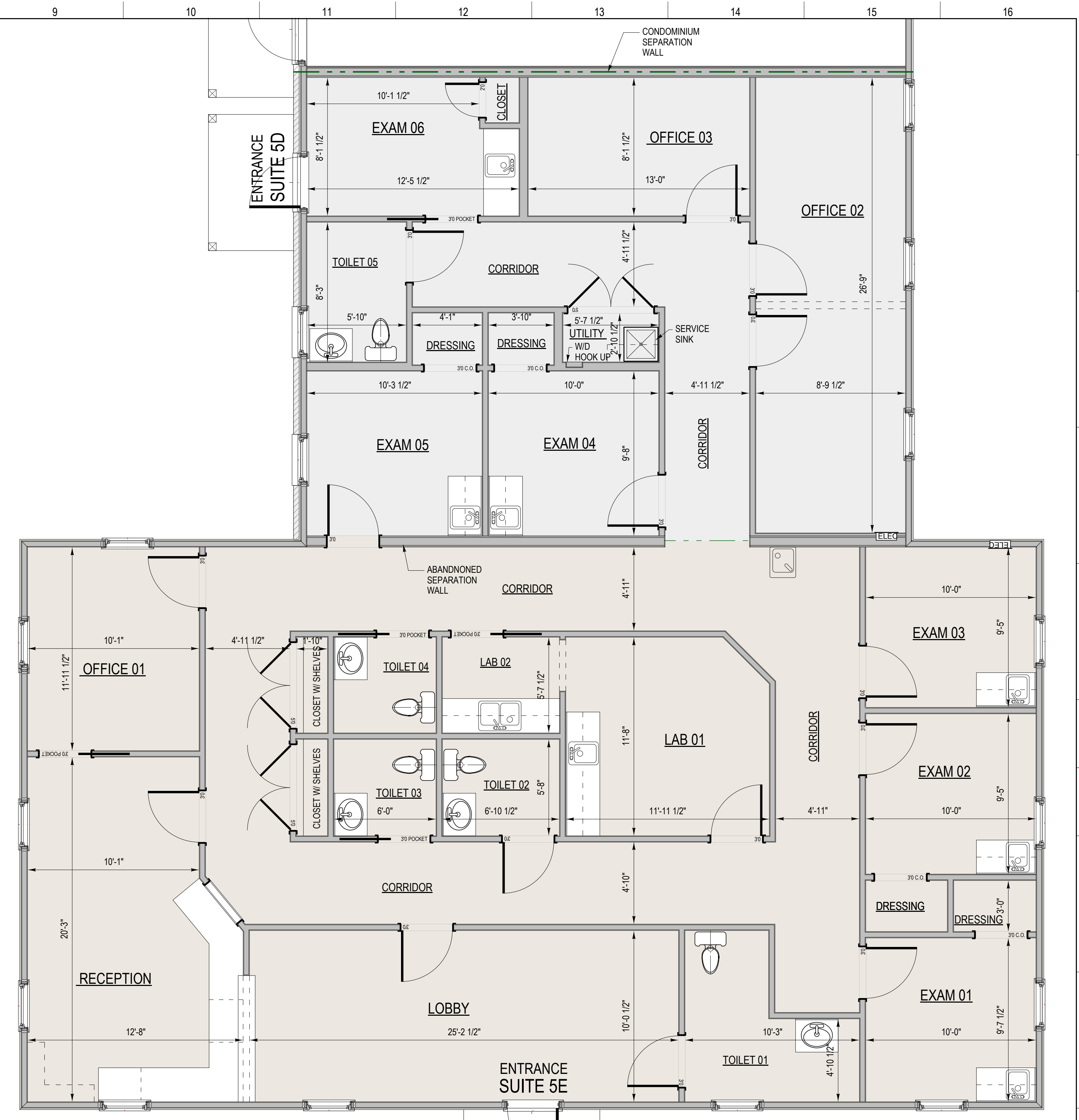
SHEET NAME  
**EXISTING  
CONDITIONS  
FLOOR PLAN**



SHEET NUMBER  
**A101**



**A1** BUILDING EXTERIOR WALL PLAN  
1/8" = 1'-0"  
**8,363 Sq ft**



**A10** SUITE FLOOR PLAN  
1/4" = 1'-0"

**AREA ANALYSIS**

SUITE 5D	1,000 Sq ft
SUITE 5E	2,012 Sq ft
<b>TOTAL</b>	<b>3,012 Sq ft</b>