



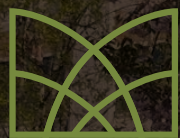
**1700**

east putnam avenue

**Multiple leasing opportunities**  
**1,856 RSF – 10,098 RSF**







**1700**

east putnam avenue



# Availability Summary

## Premises:

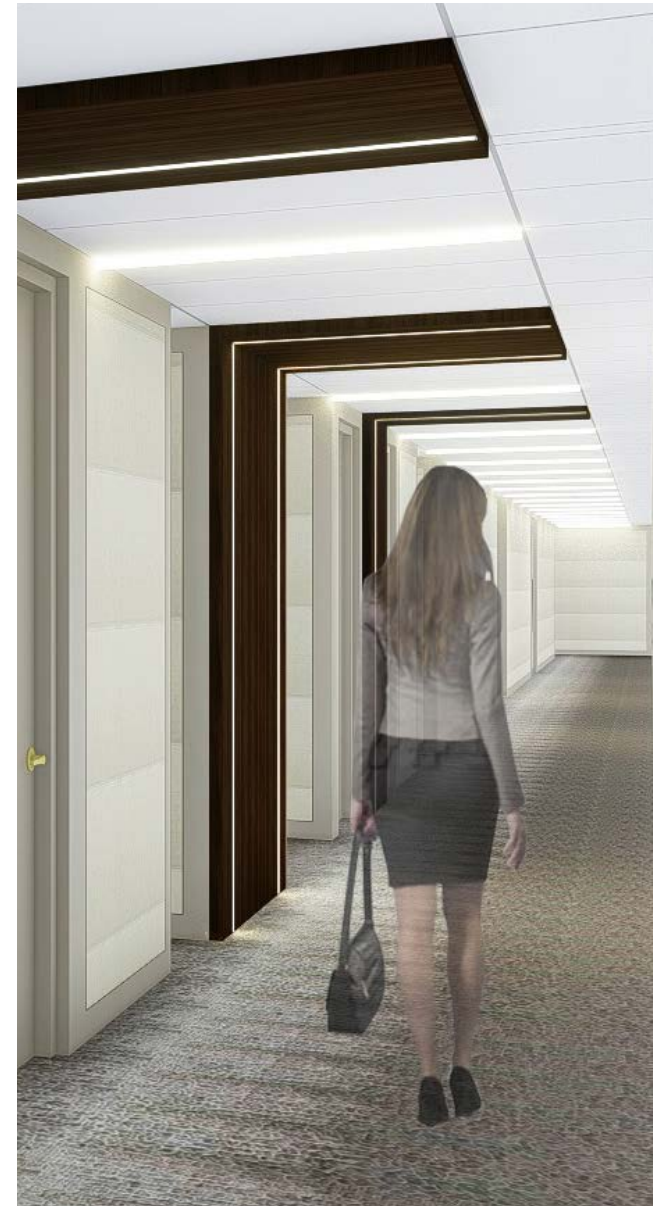
Suite 100	10,098 RSF	Q1 2024
Suite 205	2,398 RSF	Arranged
Suite 209	1,894 RSF	Arranged
Suite 211	3,364 RSF	Immediate
Suite 403	3,436 RSF	February 2024
Suite 410	1,856 RSF	Immediate

Asking Rent: Upon Request

## Features:

- Ownership is finalizing plans for a capital improvement program including a fully renovated corridors and amenity upgrades
- Suite 205 can be delivered in the second half of 2023. The space will feature three offices, pantry and open space for a minimum of eight workstations
- Suite 209 is built and can be available in 60-90 days. The suite features 4 offices, conference and small open area
- Suite 211 is available immediate. The space is nicely built a formal reception, 2 executive offices, 4 standard offices, conference room, pantry and small open area
- Suite 403 is nicely built with 3 glass front offices, executive office, conference room, 2 phone rooms, reception, pantry and open area for 6 seats
- Suite 410 was recently built, provides direct elevator presence and features three offices, a conference room, pantry and open area for workstations

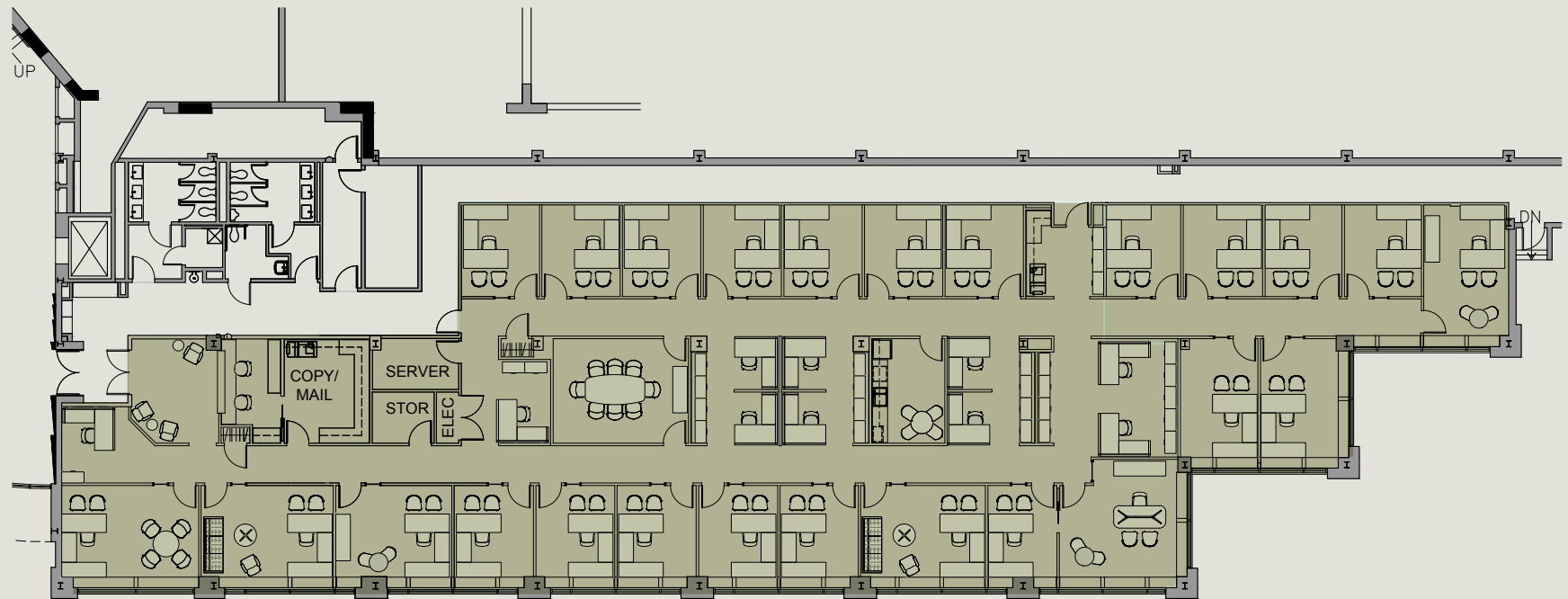
Corridor renderings for planned renovations beginning soon.



# Suite 100

10,098 RSF

Workspace	Seats
Executive offices	6
Standard offices	17
Workstation	6
Reception	1
<b>Total headcount</b>	<b>30</b>



# 2nd Floor Availability



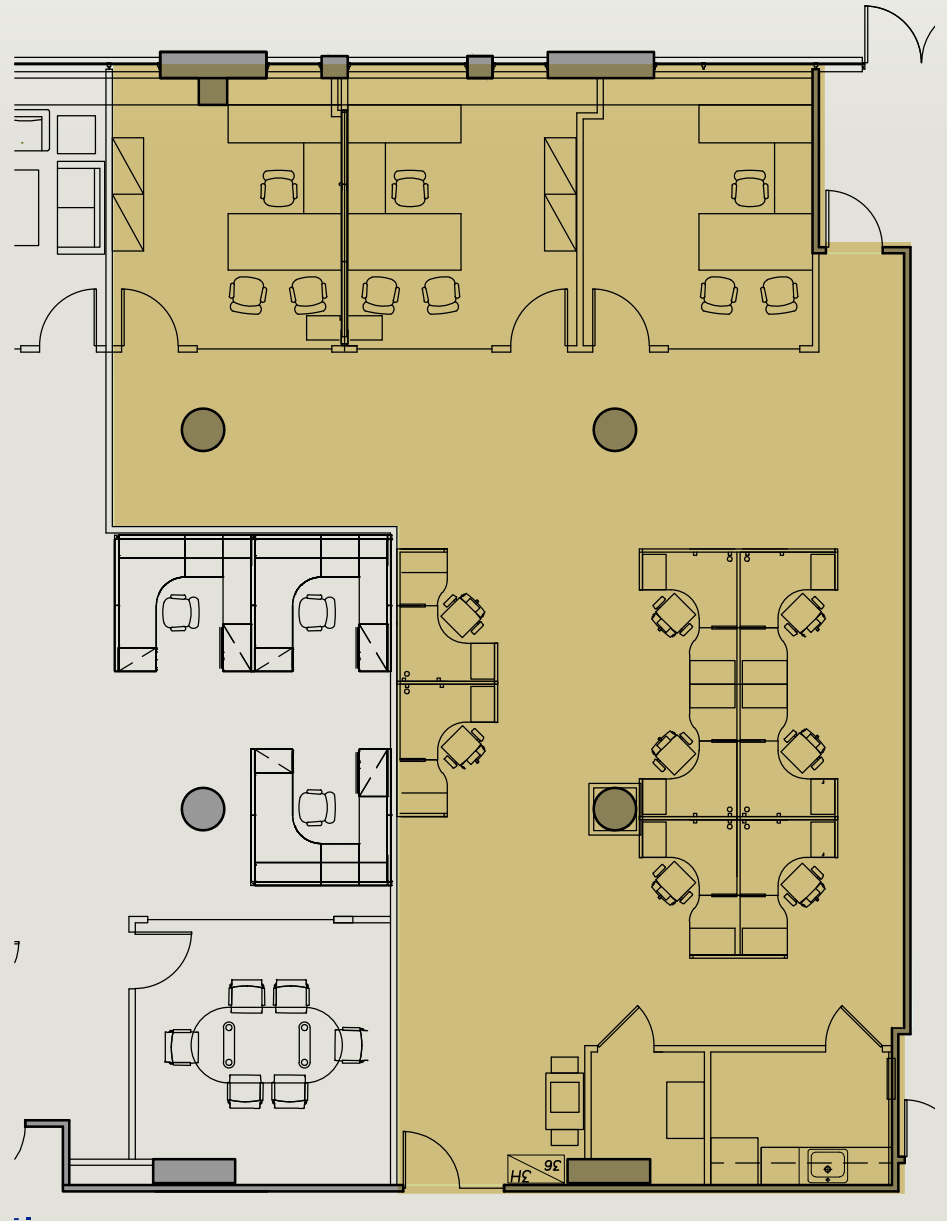
# Suite 205

## 2,398 RSF

Workspace	Seats
Windowed office	3
Workstation	8
<b>Total headcount</b>	<b>11</b>

Support	
Pantry	1
Copy area	1
IT room	1



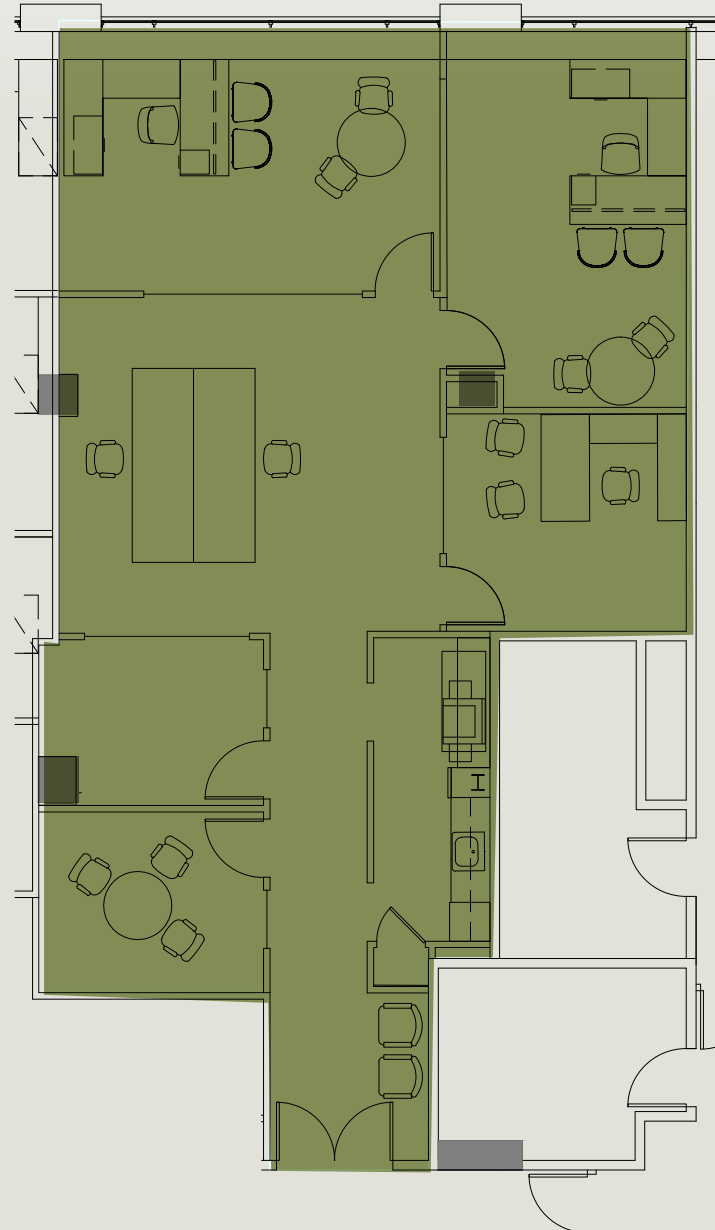
# Suite 209

## 1,894 RSF

Workspace	Seats
Executive offices	2
Standard offices	2
Workstation	2
<b>Total headcount</b>	<b>6</b>

Support	
Pantry	1
Conference room	1



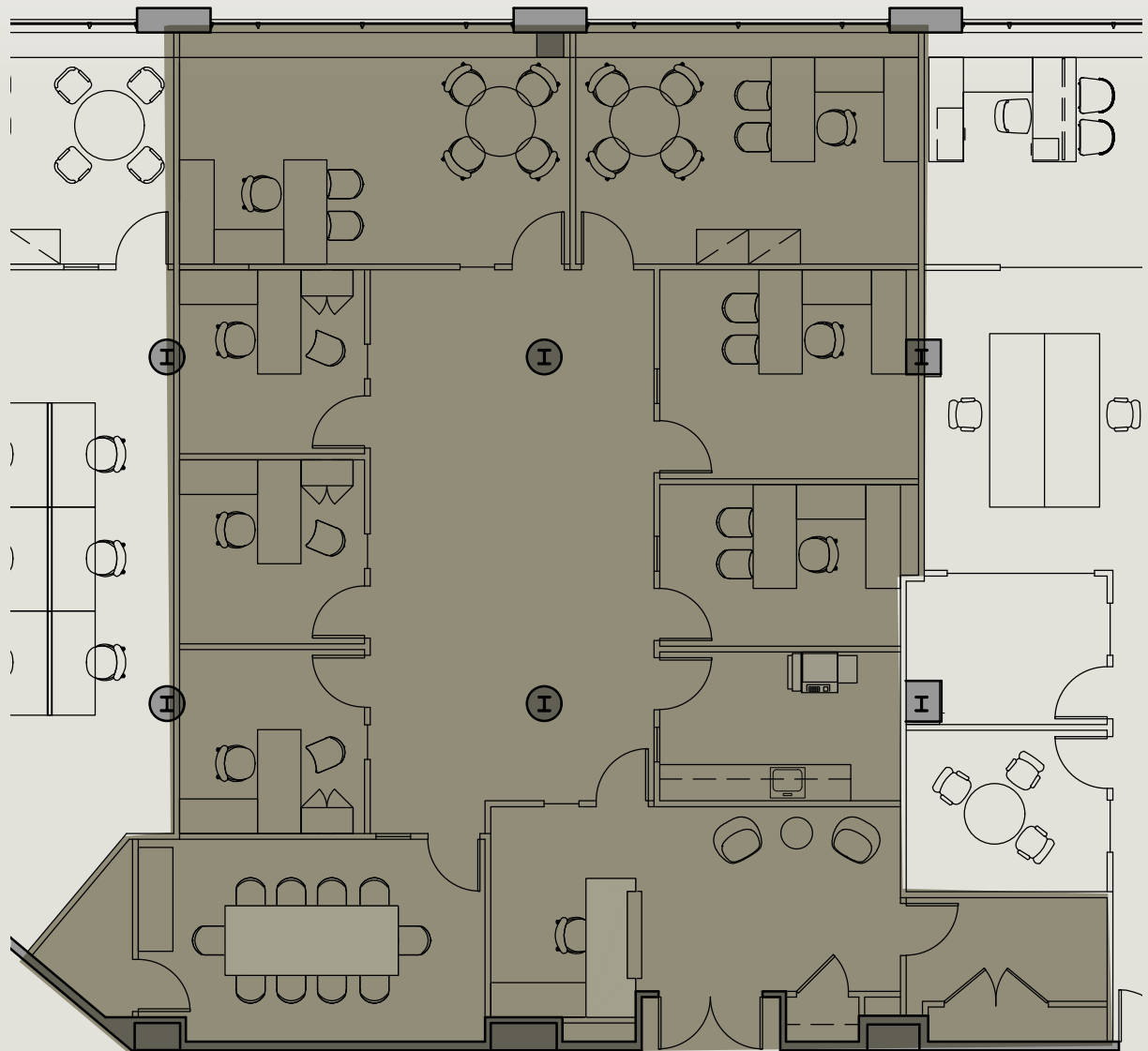
# Suite 211

3,364 RSF

Workspace	Seats
Executive offices	2
Standard offices	5
Workstation	2
Reception	1
<b>Total headcount</b>	<b>10</b>

Support	
Pantry	1
Conference room	1





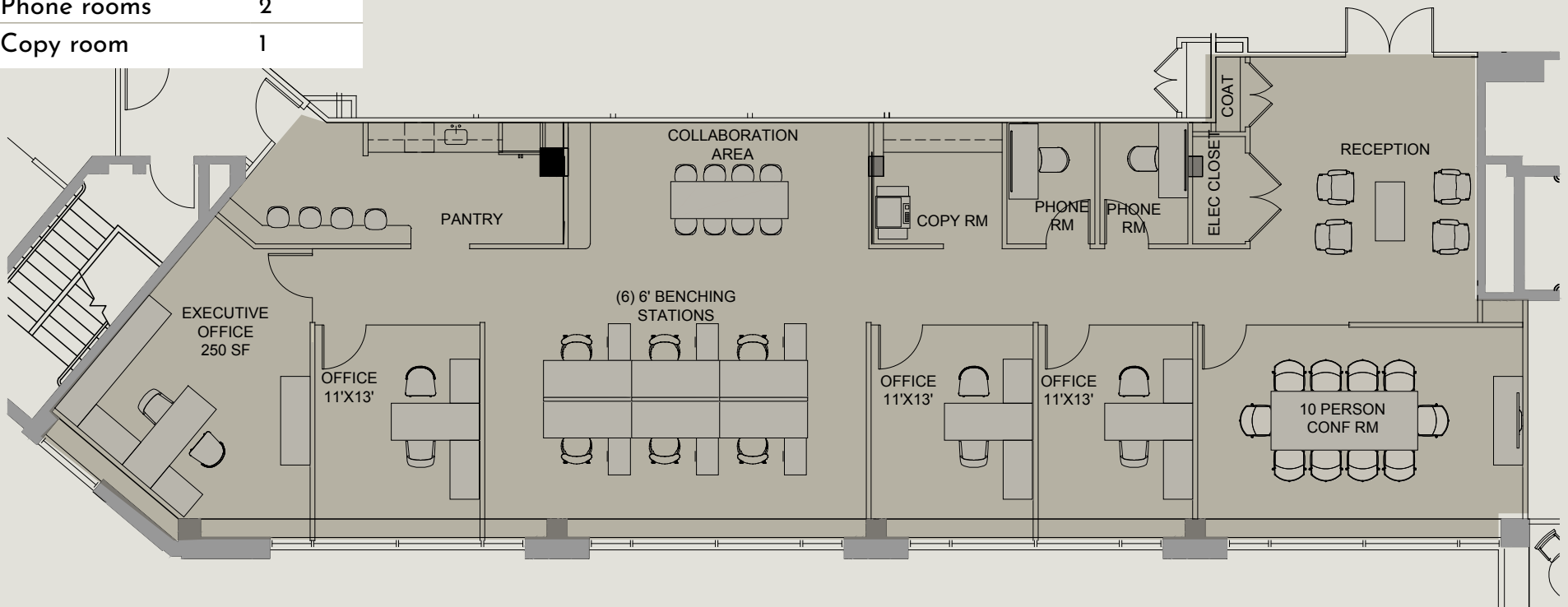
# Suites 403

3,436 RSF

Workspace	Seats
Executive offices	1
Standard offices	3
Workstation	6
<b>Total headcount</b>	<b>10</b>

Support	
Pantry	1
Conference room	1
Phone rooms	2
Copy room	1



# Suite 410

## 1,856 RSF

### Workspace

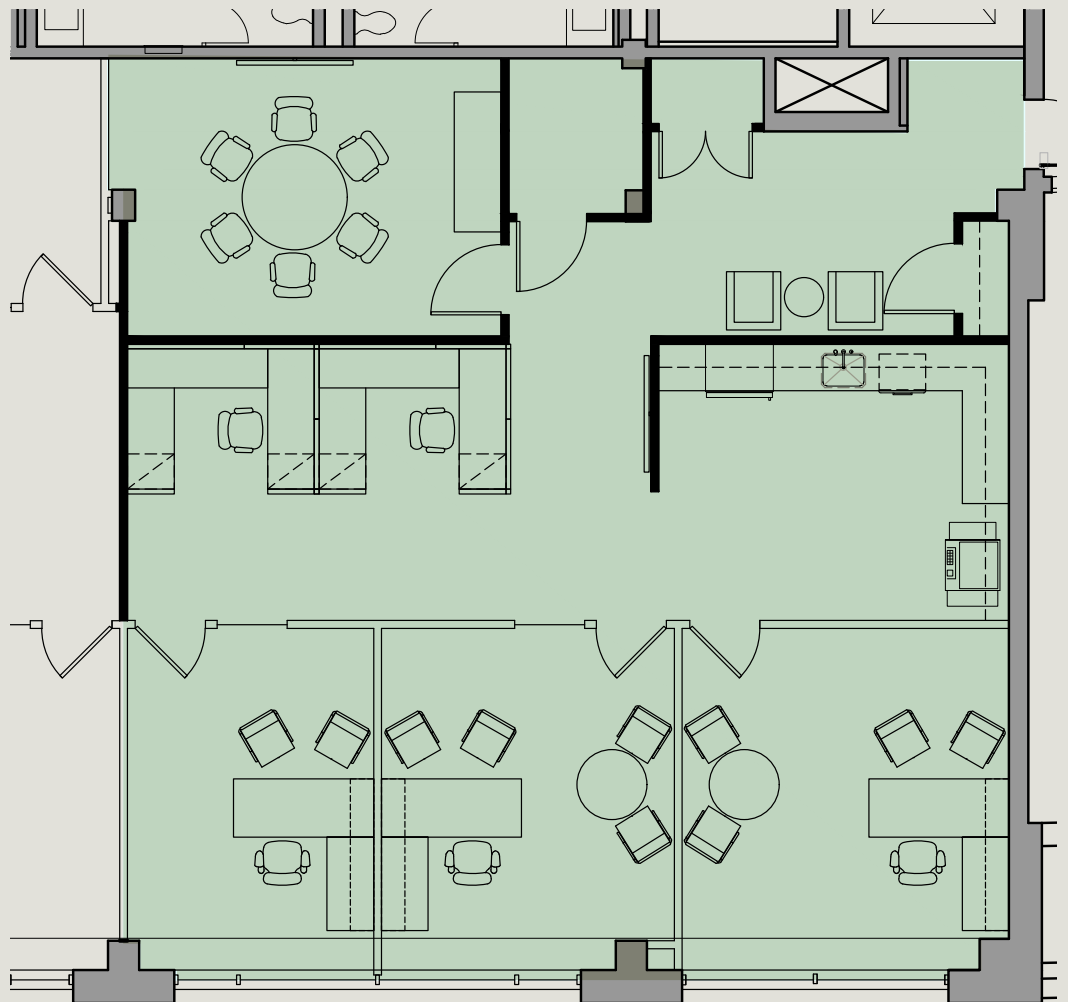
Workspace	Seats
Windowed office	3
Workstation	2
<b>Total headcount</b>	<b>5</b>

### Collaborative space

6 Person conference room	1
--------------------------	---

### Support

Pantry	1
Copy area	1
IT room	1





**1700**

**East Pulman Avenue**





# 1700

east putnam avenue

## For more information contact:

Gil Ohls  
+1 203 249 8600  
gil.ohls@jll.com

Matthew Felice  
+1 212 812 6422  
matt.felice@jll.com

Jones Lang LaSalle Brokerage, Inc. | 1 Station Place, Stamford, CT 06902

Although information has been obtained from sources deemed reliable, neither Owner nor JLL makes any guarantees, warranties or representations, express or implied, as to the completeness or accuracy as to the information contained herein. Any projections, opinions, assumptions or estimates used are for example only. There may be differences between projected and actual results, and those differences may be material. The Property may be withdrawn without notice. Neither Owner nor JLL accepts any liability for any loss or damage suffered by any party resulting from reliance on this information. If the recipient of this information has signed a confidentiality agreement regarding this matter, this information is subject to the terms of that agreement. ©2023. Jones Lang LaSalle IP, Inc. All rights reserved.

