

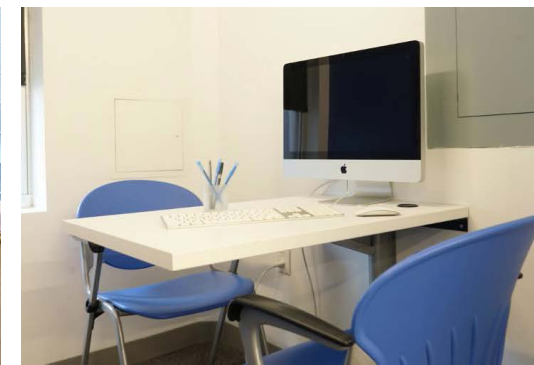
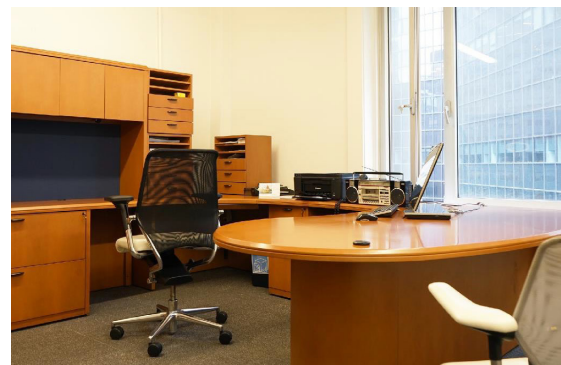
# GRAND PARK

110 EAST 40TH STREET

COMMERCIAL CONDO FOR SALE



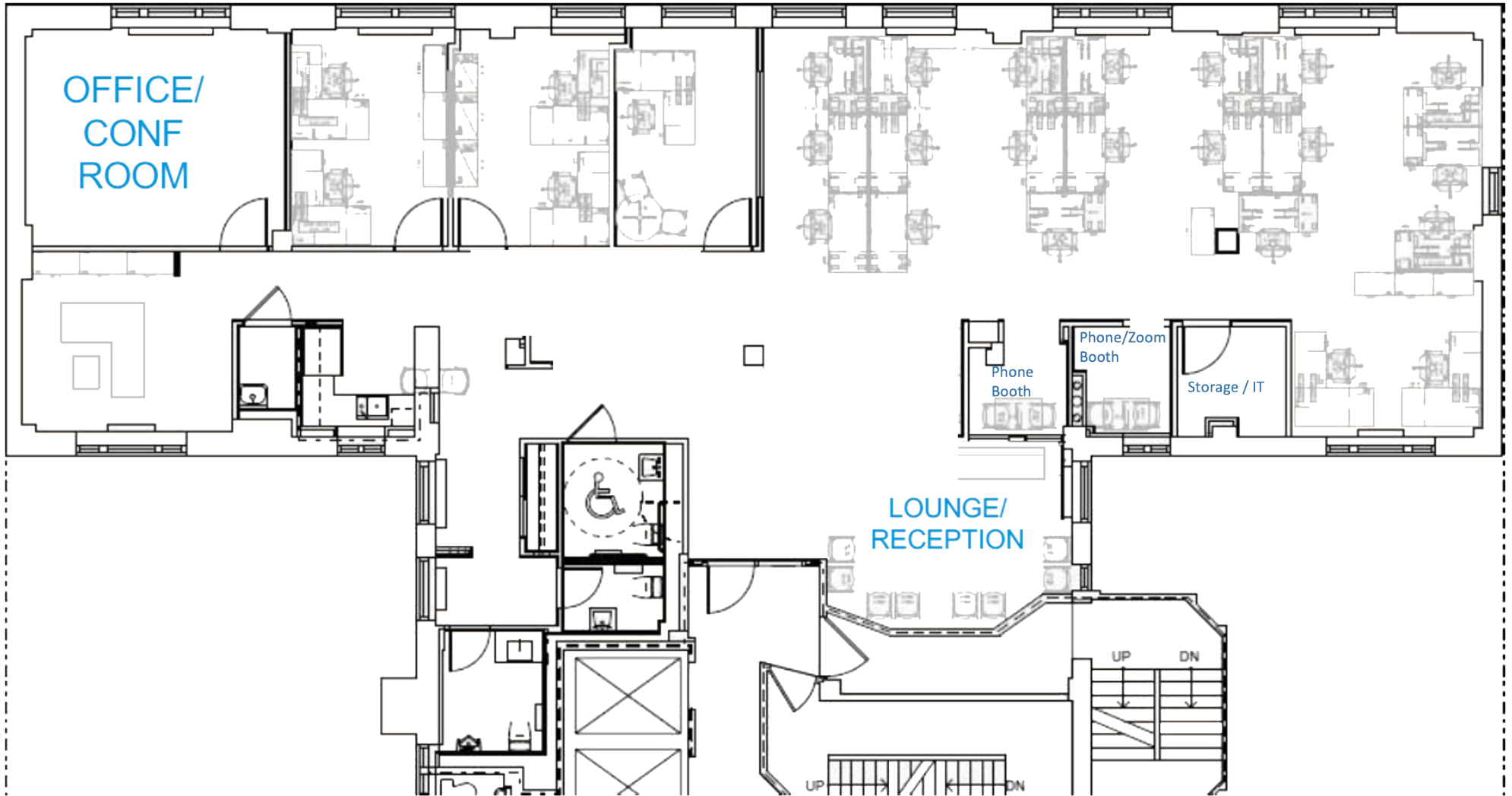
- ❑ **Penthouse - 9th floor - 5,930 RSF**
- ❑ **Improvements Completed to Open the Floorplan**
- ❑ **New Paint and New Connector Covers**
- ❑ **4 Offices, Open Space, Pantry, Phone/ Meeting Rooms, Up To 30 Seats**
- ❑ **Windows on 4 sides**
- ❑ **Newly Renovated Attended Lobby**
- ❑ **1 Block From Subways (4, 5, 6, 7, S) and Grand Central Station**



# FLOOR PLAN

**5,930 SF**  
(DIVISIBLE)

EAST 40TH STREET



**LISA ANN POLLAKOWSKI**

Exec. Managing Director

646.723.4013

lpollakowski@lee-associates.com

All information supplied is from sources deemed reliable and is furnished subject to errors, omissions, modifications, removal of the listing for sale or lease, and to any listing conditions, including the rates and manner of payment of commissions for particular offerings imposed by principals or agreed by this Company, the terms of which are available to principals or duly licensed brokers. Any square footage dimensions set forth are approximate.

**LEE &  
ASSOCIATES**