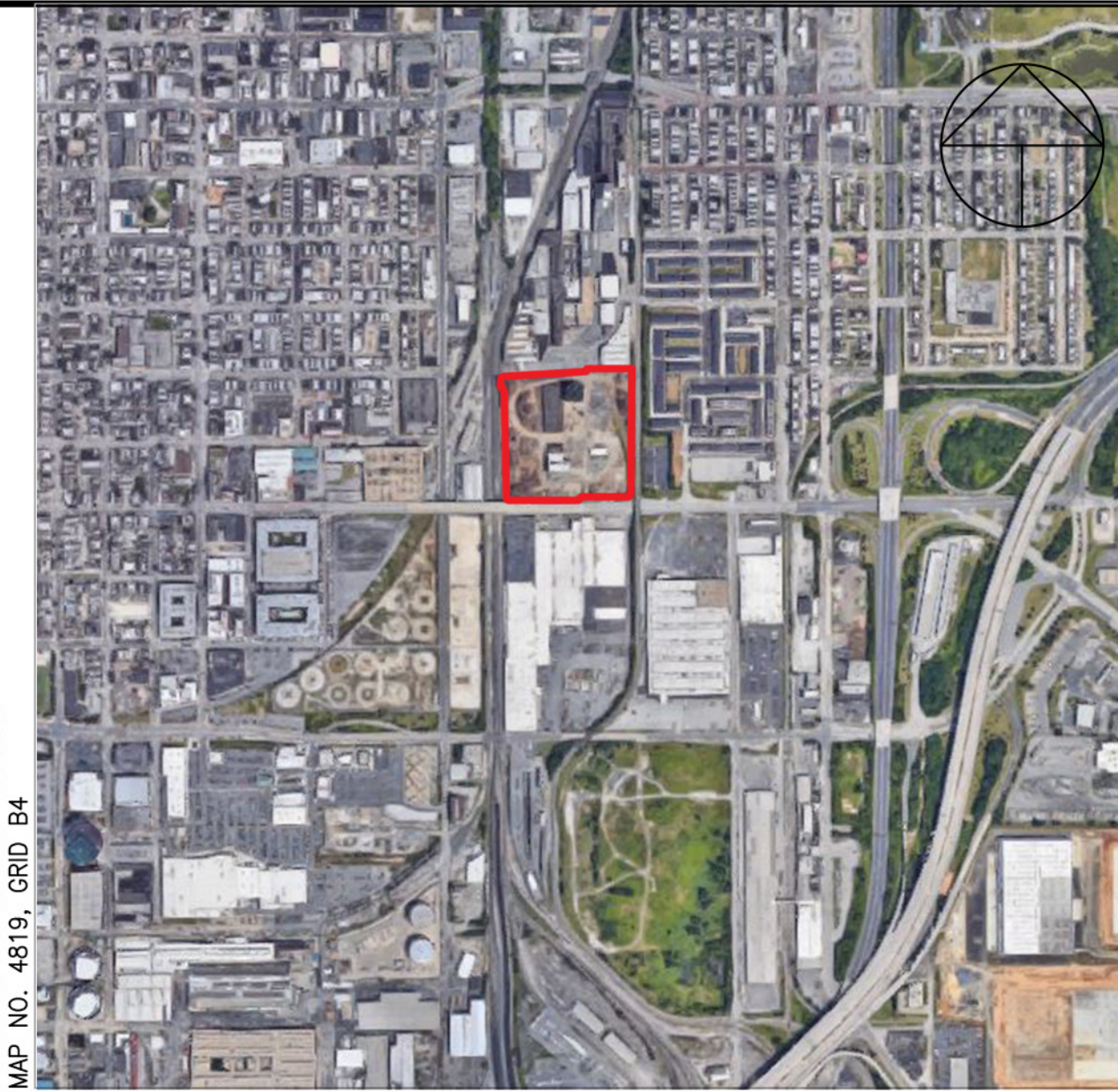




Map Copyright © ADC The Map People, (800) 829-6277
Permitted Use Number 0510558
MAP NO. 4819, GRID B4



VICINITY MAP
SCALE: 1" = 500'

NOTES

- 1. SITE AREA: +/- 12.1 ACRES
- 2. UTILITIES AND TITLE: EX. PUBLIC 90" STORM DRAIN AND SANITARY SEWER LINE, EX. PUBLIC RIGHTS-OF-WAY, EX. EGRESS EASEMENTS, TITLE RESTRICTIONS, CONTAMINATION
- 3. 174 - 20'x42' FOR SALE TOWNHOMES, TWO-CAR REAR GARAGES
- 4. HUDSON, S JANNEY, S KRESSON STREET: 50' RIGHTS-OF-WAY, 34' ROADWAYS
HARMONY CT, GUNTHER WAY (ONE-WAY): 40' RIGHTS-OF-WAY, 26' ROADWAYS
20' REAR ALLEYS
- 5. +/-1 ACRE PARK
- 6. 154 TOTAL ON-STREET, PARALLEL PARKING SPACES (8'x22')



MORRIS & RITCHIE ASSOCIATES, INC.
ARCHITECTS, PLANNERS, URBAN DESIGNERS, LANDSCAPE ARCHITECTS, ENGINEERS, & SURVEYORS
1414 KEY HIGHWAY, SUITE M301
BALTIMORE, MARYLAND 21230
(443) 490-7175
www.mragta.com
ATTN: SEAN DAVIS, PLA
sdavis@mragta.com

OWNER/DEVELOPER:

CONSULTANTS:
GEO-TECHNOLOGY ASSOCIATES
1414 KEY HIGHWAY SUITE 201P
BALTIMORE, MD 21230
PHONE: 443-965-9274

Rev	Description

CONCEPTUAL SITE PLAN
CAMBRIDGE IRONS
O'DONNELL STREET
WARD 04, SECTION 12, BLOCK 0611, LOT 3

PROFESSIONAL CERTIFICATION
"I HEREBY CERTIFY THAT THESE DOCUMENTS WERE PREPARED OR APPROVED BY ME, AND THAT I AM A DULY LICENSED PROFESSIONAL LANDSCAPE ARCHITECT UNDER THE LAWS OF THE STATE OF MARYLAND, LICENSE NO. 3657, EXPIRATION DATE: 03/05/2021."

Project No.: 20815
Date: 5/13/20
Drawn By: BNS
Checked By: SDD
Scale: AS SHOWN

SITE PLAN

SP-1