



Each office independently owned and operated

FOR LEASE | INDUSTRIAL PROPERTY

725 SPIRAL BLVD

HASTINGS, MN 55033

RE/MAX ADVANTAGE PLUS

1251 Town Centre Drive
Eagan, MN 55123
REMAXCOMMERCIAL.COM

PRESENTED BY:

TIM LITTLE

Chief Commercial Broker
952.432.4900
tctimlittle@gmail.com

JIM STARR

Sr. Associate
612.247.5898
jjstarr41@gmail.com

LUIS OLVERA

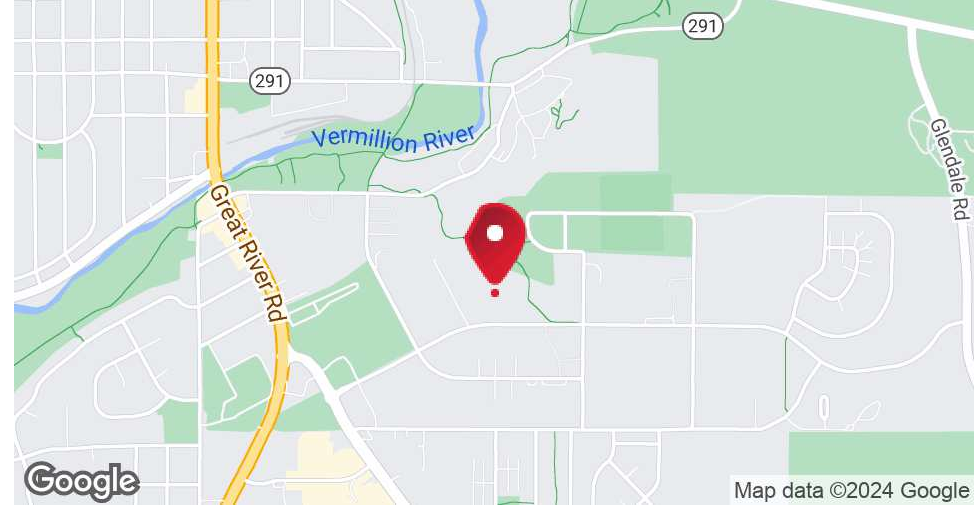
Associate
612.803.0142
luisolvera@comcast.net

JEREMY FELDMANN

Associate
406.314.3333
jeremy.feldmann@remax.net



EXECUTIVE SUMMARY



OFFERING SUMMARY

Lease Rate:	\$10.00 - 15.00 SF/yr (Gross)
Building Size:	35,910 SF
Available SF:	1,600 - 6,000 SF
Lot Size:	2.1 Acres

PROPERTY OVERVIEW

Office/warehouse space available in the Hastings, MN Industrial Park.
Lots of Private Offices and in the upper level and Lower level - 7600 sq ft.
Flexible warehouse space 6000 sq ft
One large drive-in door
16' clear heights
No dock
Zoned I-1
* Portion of Utilities prorated

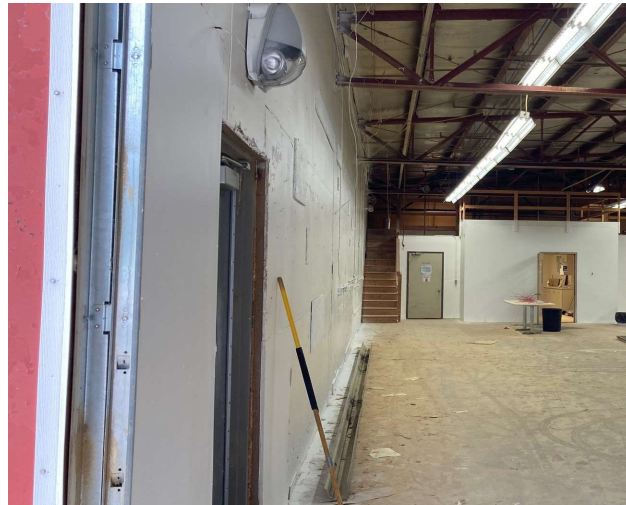
INDUSTRIAL PROPERTY
FOR LEASE

RE/MAX ADVANTAGE PLUS
Each office independently owned and operated

1251 Town Centre Drive
Eagan, MN 55123

REMAXCOMMERCIAL.COM

ADDITIONAL PHOTOS



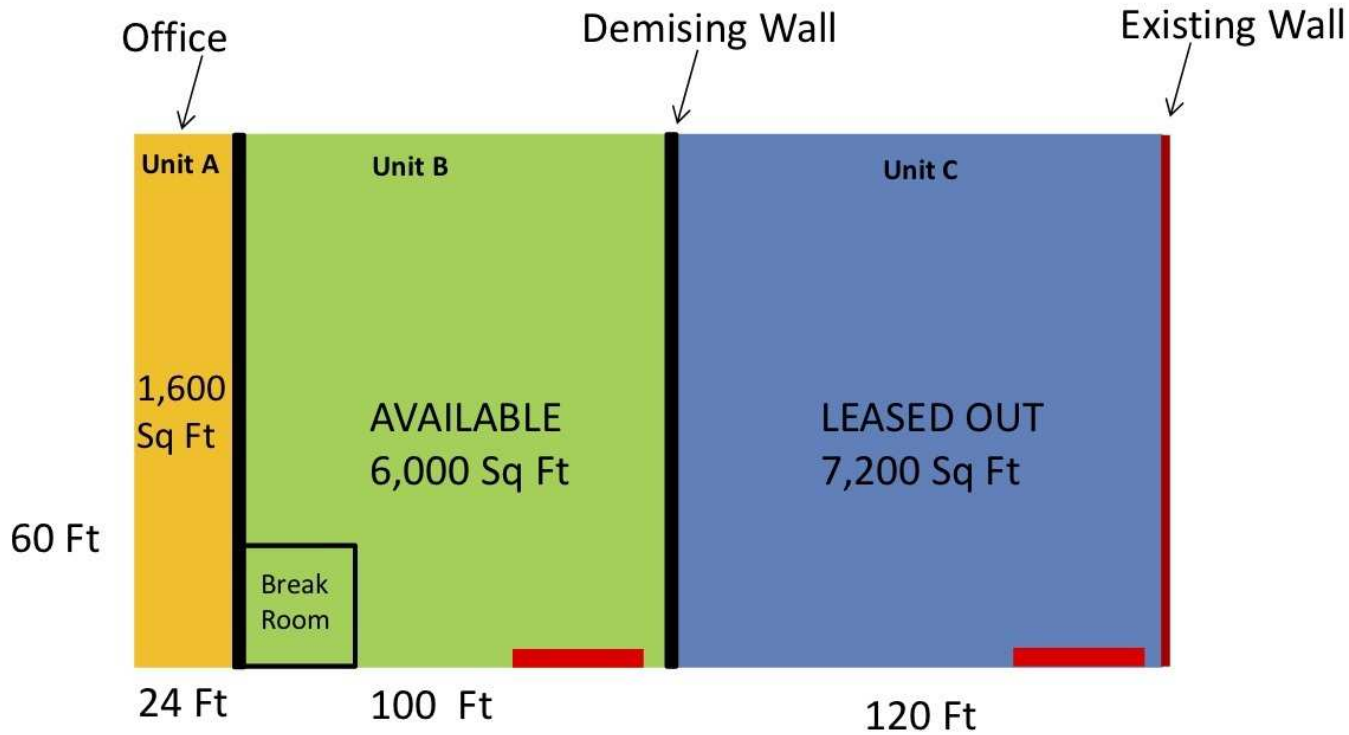
INDUSTRIAL PROPERTY
FOR LEASE

RE/MAX ADVANTAGE PLUS
Each office independently owned and operated

1251 Town Centre Drive
Eagan, MN 55123

REMAXCOMMERCIAL.COM

FLOOR PLANS



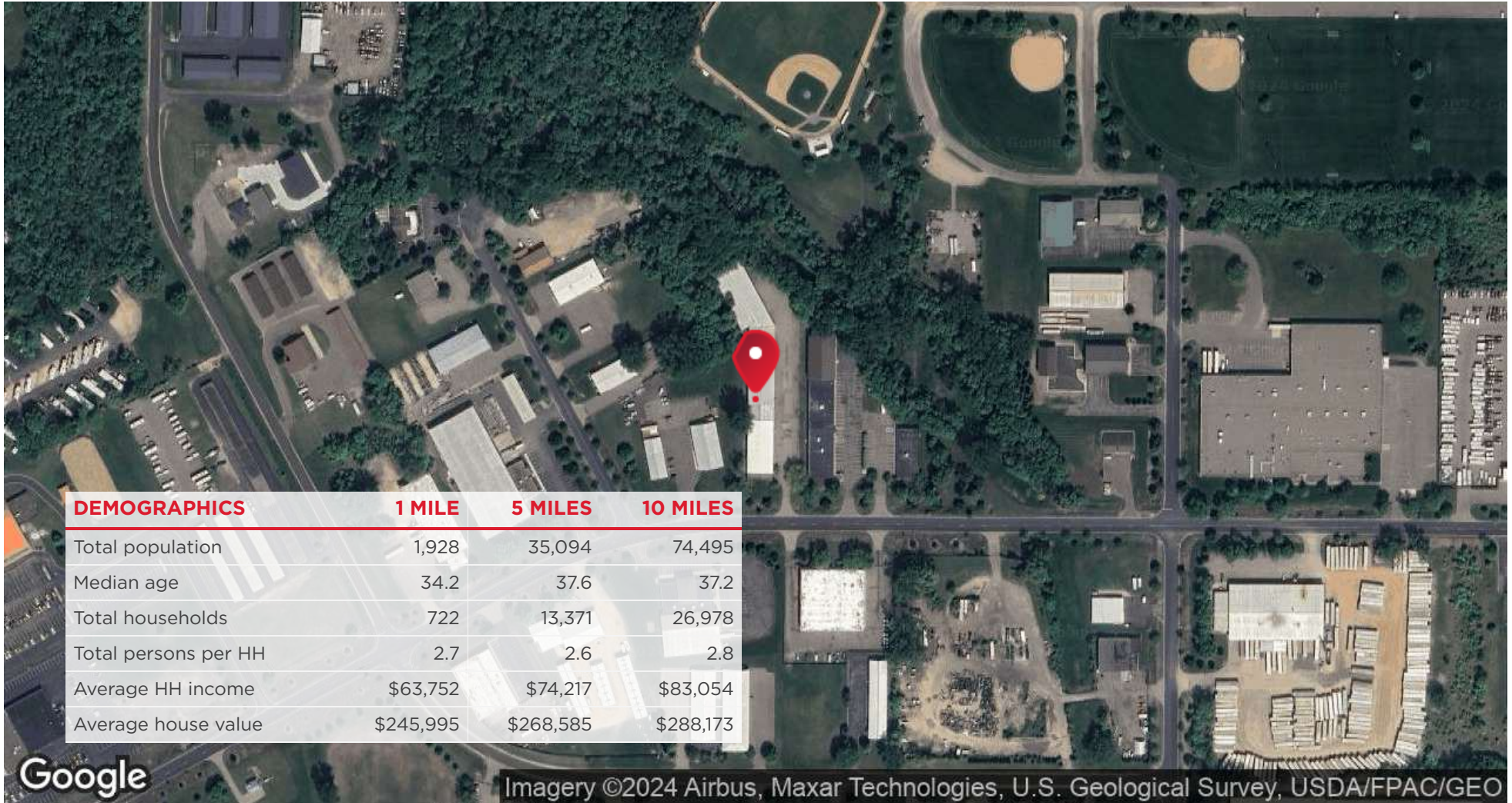
INDUSTRIAL PROPERTY
FOR LEASE

RE/MAX ADVANTAGE PLUS
Each office independently owned and operated

1251 Town Centre Drive
Eagan, MN 55123

REMAXCOMMERCIAL.COM

LOCATION MAP



INDUSTRIAL PROPERTY
FOR LEASE

RE/MAX ADVANTAGE PLUS
Each office independently owned and operated

1251 Town Centre Drive
Eagan, MN 55123

REMAXCOMMERCIAL.COM

MEET THE TEAM



TIM LITTLE

Chief Commercial Broker

C: 952.432.4900
tctimlittle@gmail.com



JIM STARR

Sr. Associate

C: 612.247.5898
jjstarr41@gmail.com



LUIS OLVERA

Associate

C: 612.803.0142
luis1olvera@comcast.net



JEREMY FELDMANN

Associate

C: 406.314.3333
jeremy.feldmann@remax.net

INDUSTRIAL PROPERTY
FOR LEASE

RE/MAX ADVANTAGE PLUS
Each office independently owned and operated

1251 Town Centre Drive
Eagan, MN 55123

REMAXCOMMERCIAL.COM