

FOR LEASE

6,559 SQ FT.

Office/Showroom

Industrial/Storage Space

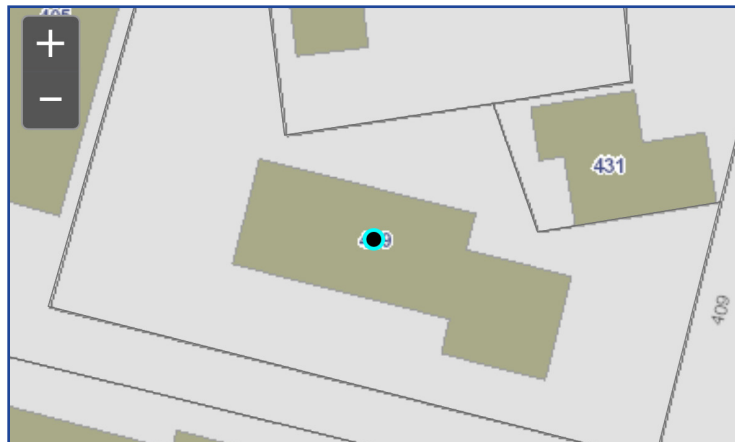


Property Details

Shop Space: 3,306 SQ FT. • Office Space - 3,253 SQ FT.



Town of Manchester Assessment Parcel Map (Property Dimensions)



Aerial Photo



Property Data

409 New State Rd. is an attractive metal building zoned Industrial with good proximity to I-84 and I-384. Built in 1984, it is suitable for sales and service uses, contractors and office/storage.

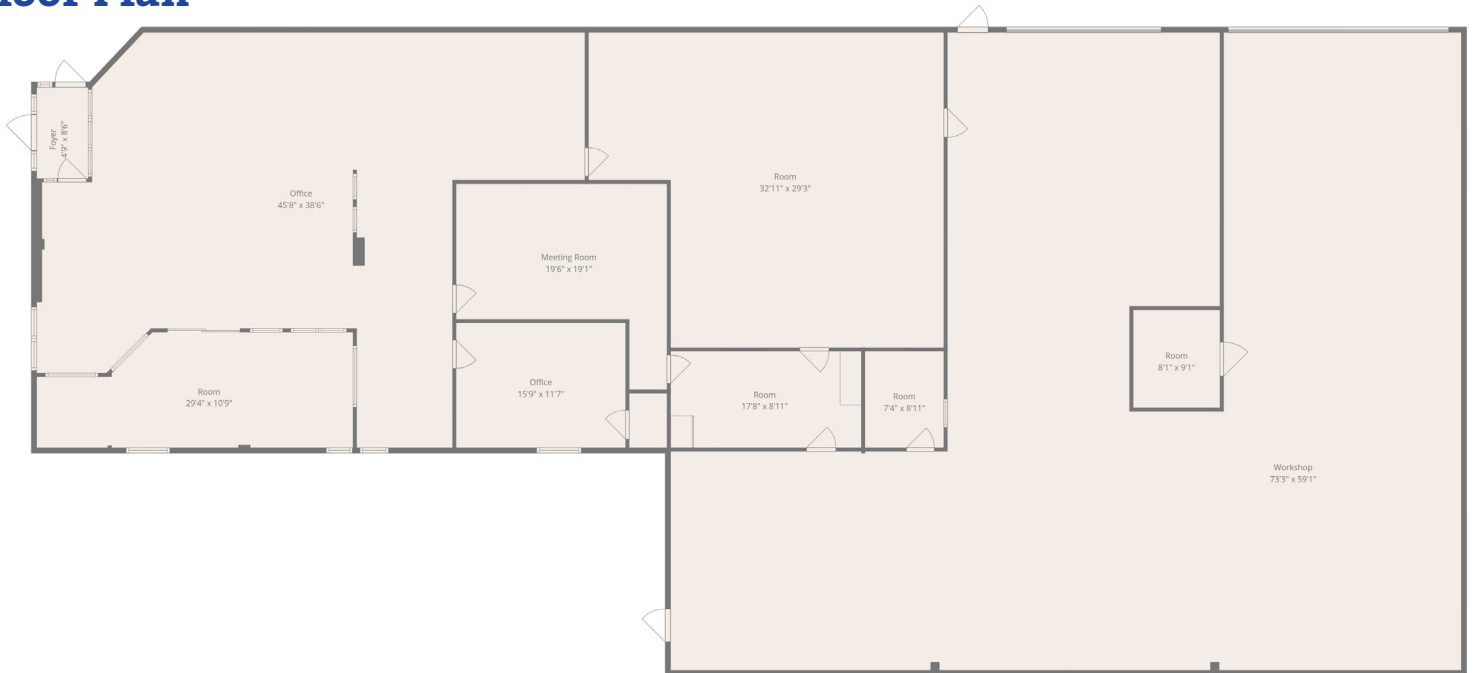
There are two drive in overhead doors, 14' high X 20' wide and 12' X 12'. There is also a loading dock with an 8' high X 10" high door. The building is heated by natural gas and the office area has central air conditioning.

There are 20 parking spaces on the property.

Property Photos



Floor Plan



DAN WILSON
Realtor

860-643-1108
danwilsonbroker@aol.com
thewilsoncompany.net

