

# Commercial Land

Up to +/- 3.5 Acres

5880 Gratiot Road  
Saginaw, MI 48638

Situated in between M-47 & Center Road



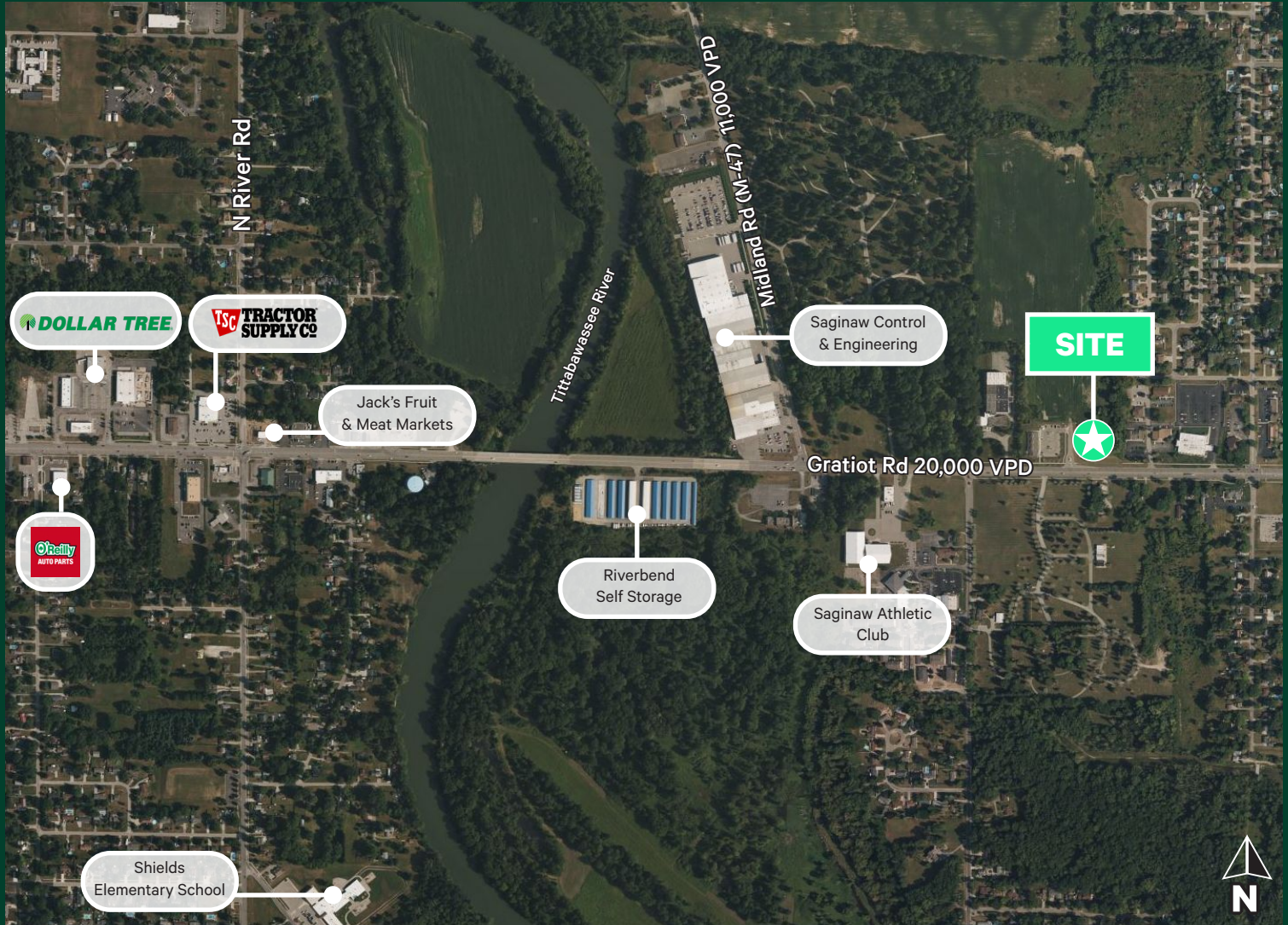
# Property Highlights

- + ±3.5 acres available for sale (can be demised)
- + Located on Gratiot Road with traffic counts exceeding 20,000 vehicles per day
- + Site is situated between M-47 (Midland Road) and Center Road
- + Potential opportunity for drive-thru
- + Nearby retailers include Meijer, Walmart, Tractor Supply Co, Aldi, Menards, and Kroger
- + Utilities to site
- + Asking Price: \$500,000

## Macro Aerial

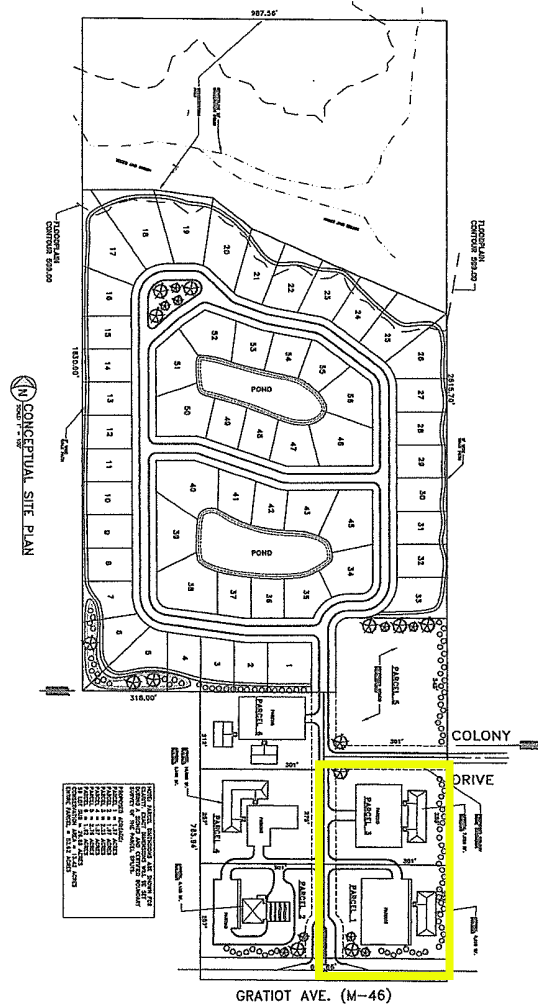


# Micro Aerial



2022 Demographics	3 Mile	5 Miles	7 Miles
Population	45,467	85,663	116,487
Number of Households	19,892	37,066	50,400
Average Household Size	2.26	2.27	2.27
Average Household Income	\$75,663	\$74,082	\$69,174
Daytime Population	37,916	92,730	129,219

# Conceptual Site Plan



## Contact Us

**Gordon Denha**  
Associate  
+1 248 351 2042  
gordon.denha@cbre.com

**Matt Crowell**  
Vice President  
+1 248 351 2084  
matt.crowell@cbre.com

© 2023 CBRE, Inc. All rights reserved. This information has been obtained from sources believed reliable but has not been verified for accuracy or completeness. CBRE, Inc. makes no guarantee, representation or warranty and accepts no responsibility or liability as to the accuracy, completeness, or reliability of the information contained herein. You should conduct a careful, independent investigation of the property and verify all information. Any reliance on this information is solely at your own risk. CBRE and the CBRE logo are service marks of CBRE, Inc. All other marks displayed on this document are the property of their respective owners, and the use of such marks does not imply any affiliation with or endorsement of CBRE. Photos herein are the property of their respective owners. Use of these images without the express written consent of the owner is prohibited.