

For Lease

1,812 SF to 4,886 SF of
Medical Office Space



8054 Darrow Road
Twinsburg, OH 44087

Joe Hauman, CCIM

+1 440 591 3723

joe.hauman@naipvc.com

David Hexter, SIOR

+1 216 455 0890

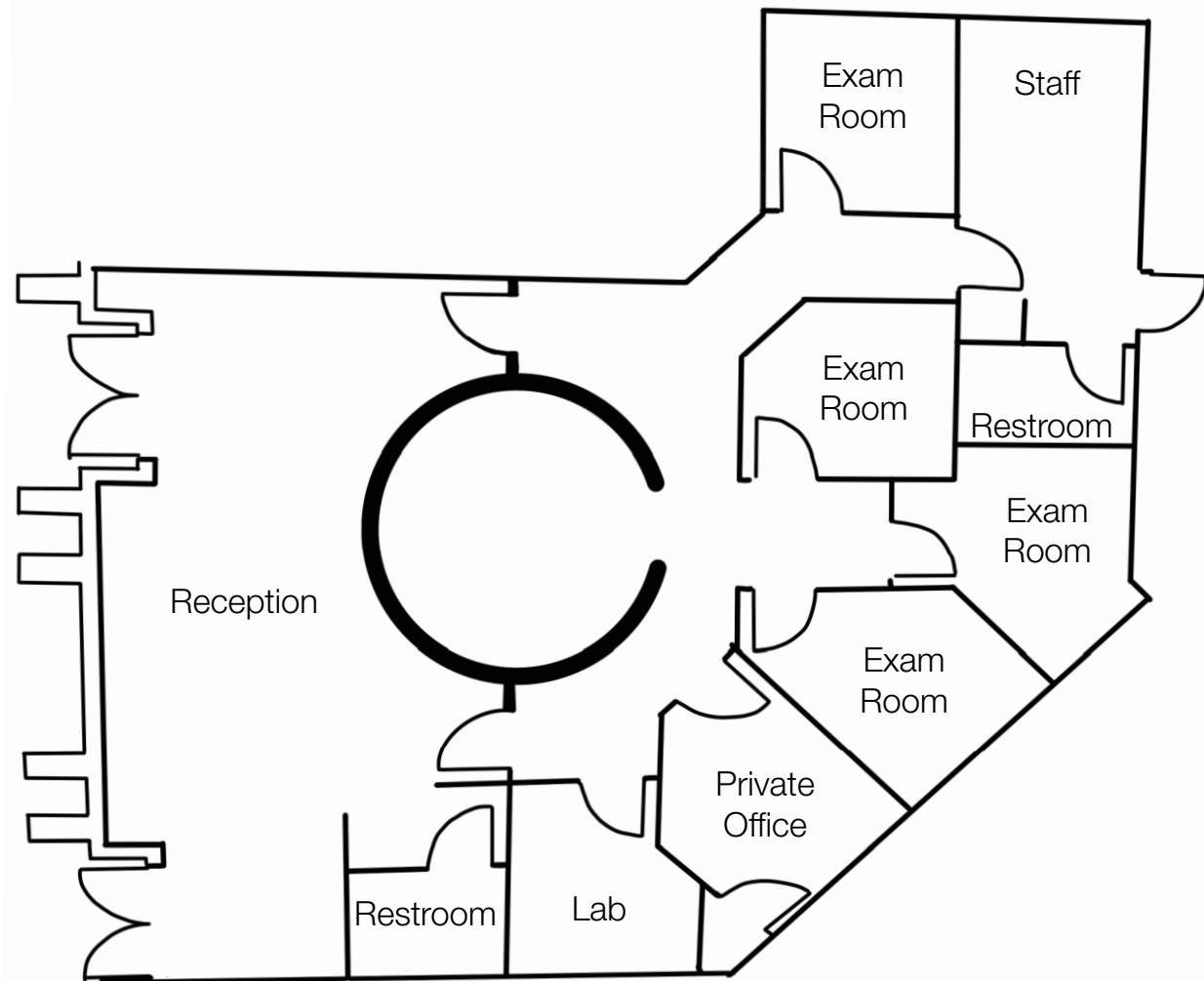
dhexter@naipvc.com

NAIPleasant Valley

COMMERCIAL REAL ESTATE SERVICES, WORLDWIDE

FLOOR PLAN - UNIT 2

- 1,812 SF Available 1/04/2026
- 4 Exam Rooms
- 1 Lab Area
- 1 Private Office
- 1 Staff Break Room Area



PHOTOS - UNIT 2



FLOOR PLAN - UNIT 3

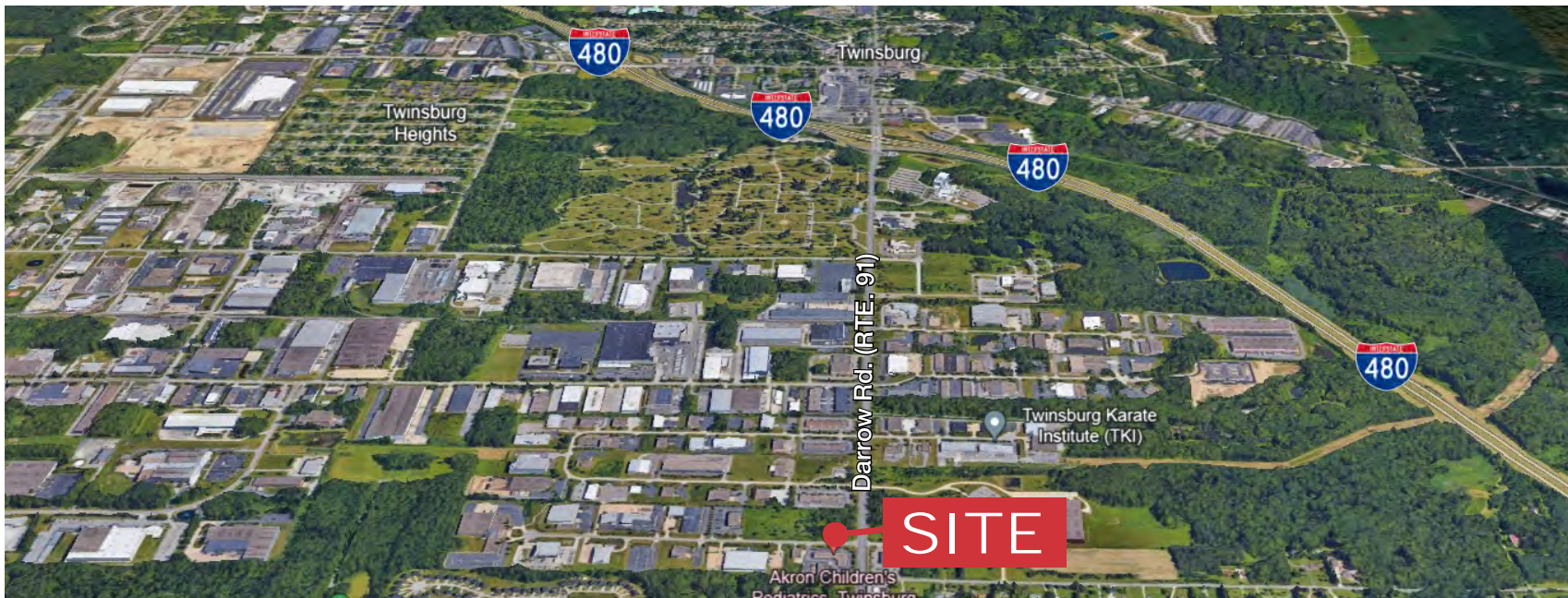
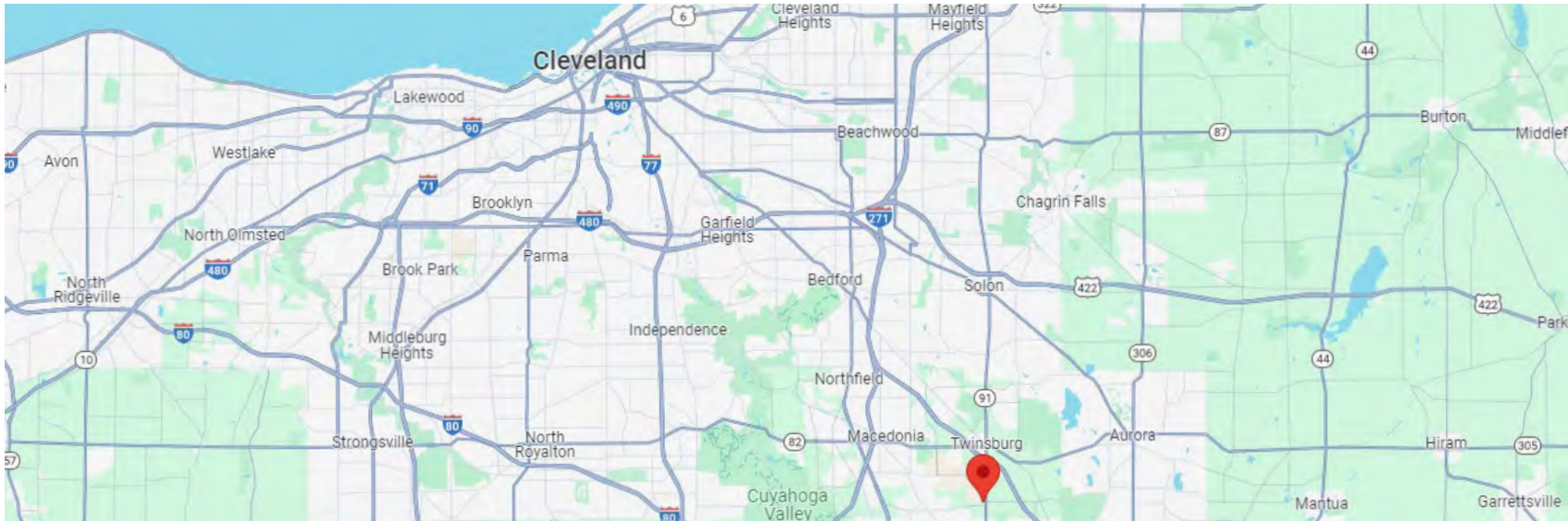
- 3,074 SF Available 5/26/2026
- 10 Exam Rooms
- 1 Lab Area
- Large Reception Area
- Dedicated Staff Break Area



PHOTOS - UNIT 3



LOCATION



BUILDING INFORMATION SHEET

LOCATION: 8054 Darrow Rd, Twinsburg, OH 44087

AVAILABLE SPACE: 1,812 – 4,886 SF

Suite	SF	Available Date
2	1,812	01/04/2026
3	3,074	05/26/2026

ACRES: 4.15

CONSTRUCTION: Brick/Block

ZONING: C-2: Community Commercial District

PARKING: Ample throughout complex

HEAT: Rooftop units

LIGHTING: T-8 Fluorescents

LEASE RATE: \$15.00/NNN

EXPENSES: \$4.04/FT

INTERCHANGE: Located off Rt. 91 and within 1.5 miles of I-480

COMMENTS: Fully built out medical office units.
Adjacent medical tenants include Akron Children's, Life Stance Health, Cleveland Clinic and University Hospitals.
Located in pro business community, Twinsburg, OH.
Building Signage available located directly off of Rt. 91.

CONTACT: Joe Hauman, CCIM / 440.591.3723/ joe.hauman@naipvc.com
David R. Hexter, SIOR / 216.455.0890 / dhexter@naipvc.com



This information has been secured from sources we believe to be reliable, but we make no representations or warranties, expressed or implied, as to the accuracy of the information. References to square footage or age are approximate. Buyer must verify the information and bears all risk for any inaccuracies.