



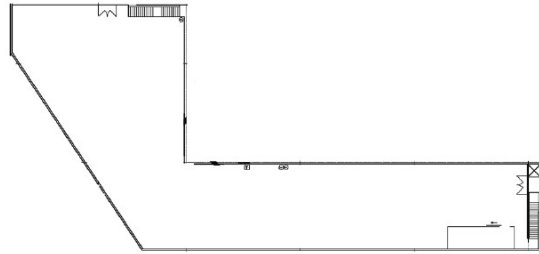
610 85TH AVENUE | OAKLAND, CA

# PROLOGIS OAKLAND 3

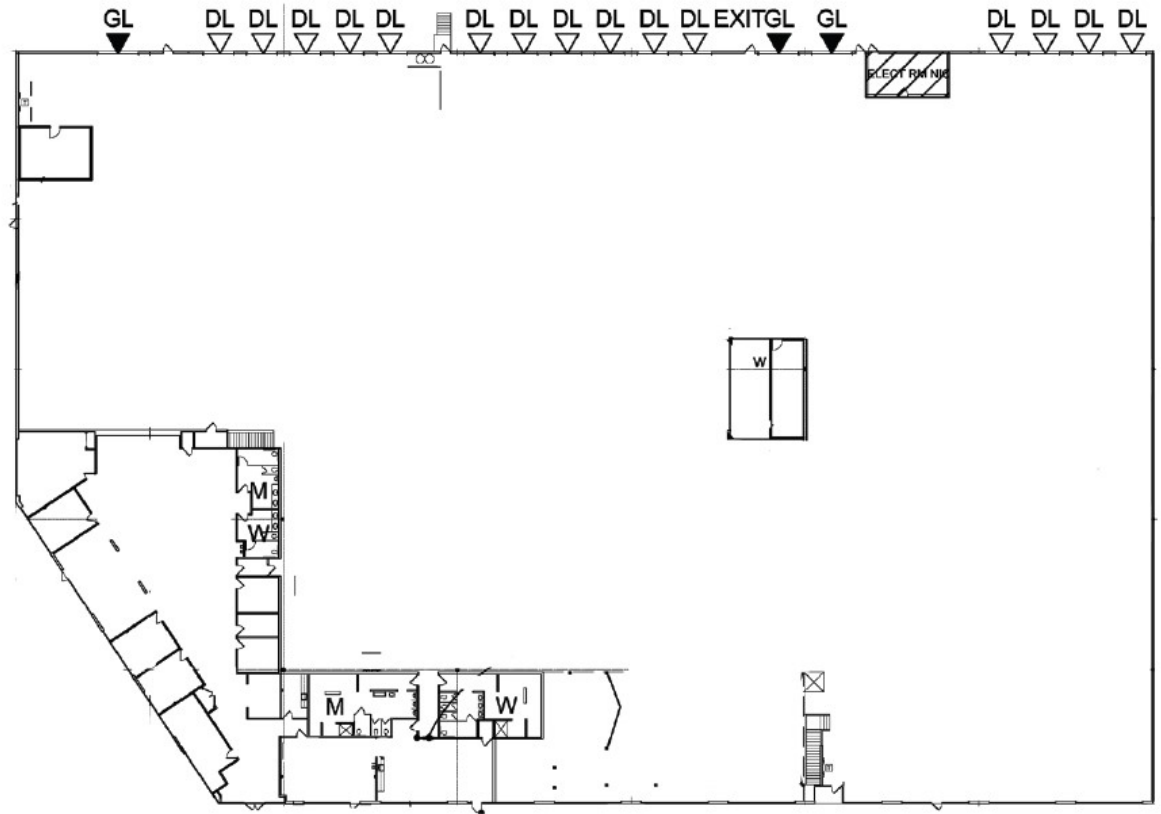


AVAILABLE NOVEMBER 1, 2024

Existing – ±73,804 SF



MEZZANINE



MAIN FLOOR

## Existing Footprint

- FOR LEASE
- Total footprint: ±73,804 SF
- Ample parking in gated business park
- 3,000 amps @ 480 volts with 3 phase power upgrade in process to 1200 amps

### FACILITY

- ±73,804 SF facility
- ±9,640 SF office space
- ±200 SF shipping office
- 26' - 28' clear height
- 50' speed bay
- 50' - 52' column spacing
- 15 docks
- 3 drive-in doors
- High density sprinklers / .60 / ±3,000 SF

- Fully insulated warehouse
- Weight bearing concrete mezzanine with elevator
- Fenced security around entire site
- Call to arrange a tour

### LOCATION

- Close proximity to I-880, Port of Oakland & Oakland Air Port





520 3rd Street  
Suite 105  
Oakland, CA 94607

**Craig Hagglund**

Principal/SIOR  
CalDRE Lic. # 01090730  
+1 510 903 7611  
chagglund@lee-associates.com

**Jesse Lucas**

Principal  
CalDRE Lic. # 01264756  
+1 510 903 7607  
jlucas@lee-associates.com

**Drew Fischer**

Principal  
CalDRE Lic. # 01344242  
+1 510 903 7602  
dfischer@lee-associates.com



**Prologis - Silicon Valley**

680 N. McCarthy Blvd.  
Suite 100  
Milpitas, CA 95035

**Prologis Headquarters**

Pier 1, Bay 1  
San Francisco, CA 94111  
Main: +1 415 394 4000  
info@prologis.com  
www.prologis.com  
NYSE: PLD  
Twitter: @Prologis

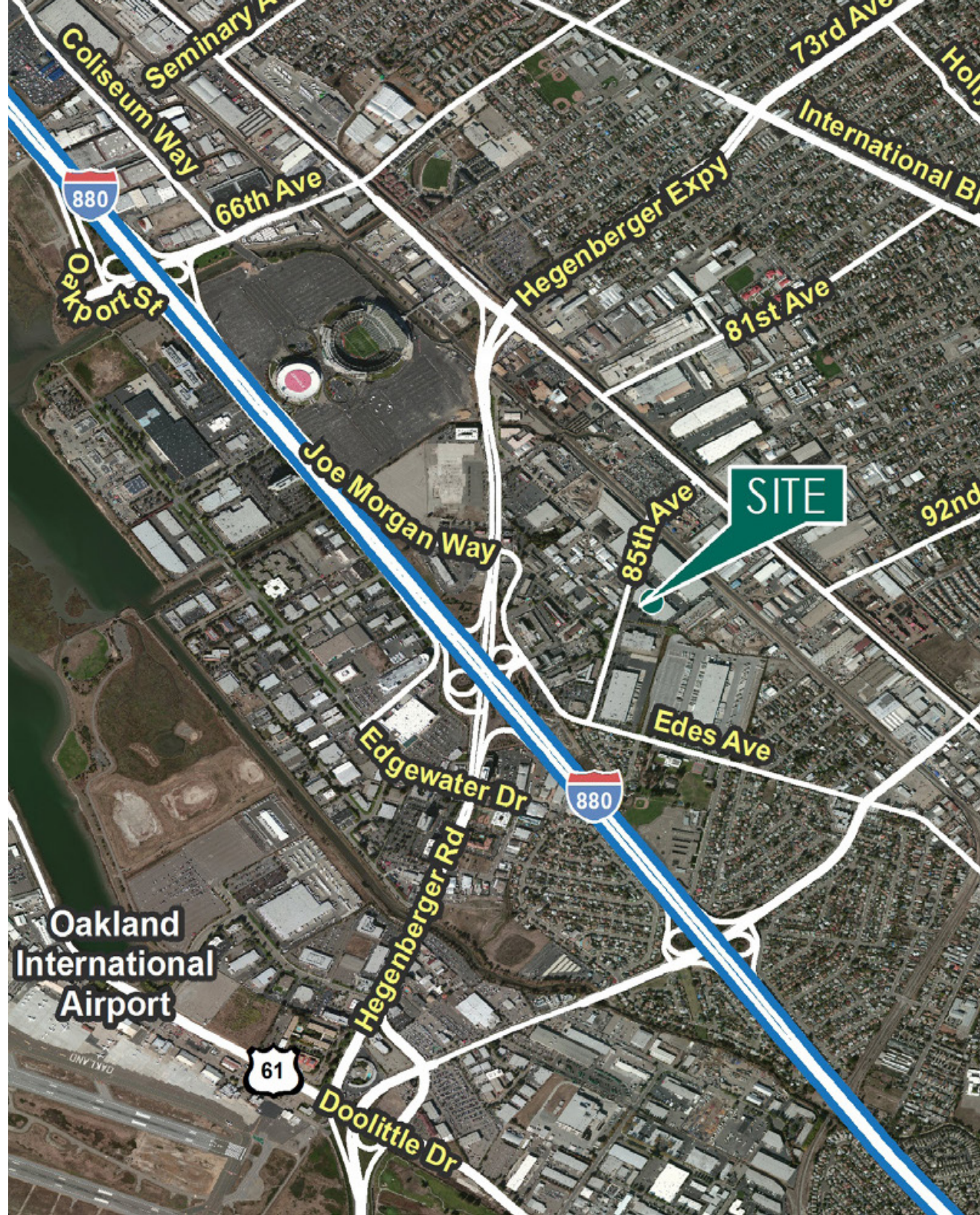
**Kari Paige**

Director, Leasing  
CalDRE Lic. # 02138850  
+1 510 661 4075  
kpaige@prologis.com

Prologis is the global leader in logistics real estate with approximately 1.2 billion square feet owned and under management in 19 countries on four continents.

Data as of <Month XX, 20XX>, for assets the company owned or had investments in, on a wholly owned basis or through co-investment ventures, properties and development projects.

PLD\_XXXX\_0X22





# Prologis Essentials

Advanced, end-to-end solutions across every touchpoint of today's supply chain.



## Operations

Our turnkey warehouse solutions get you operational quickly and keep your product moving efficiently.

- Turnkey warehouse solutions
  - Move in + setup
  - Renewal + optimization
  - Relocation
- Racking systems
- Forklifts and industrial trucks
- Network infrastructure and security
- Automation solutions
- Other ancillary solutions

## Energy + Sustainability

Join us—your partner on the journey to decarbonization and net zero.

- Clean energy solutions
- Energy storage
- Lighting and electrical
- Energy-efficiency solutions
- Backup power generators
- Power purchase agreements
- Renewable energy credits
- Carbon credits

## Mobility

Turbocharge your drive to zero emissions with our comprehensive suite of mobility solutions.

- Fleet electrification for depots and hubs
- Temporary power
- Hydrogen fueling
- Workplace charging

## Workforce

Unlock the potential of your workforce and enhance recruitment, retention and productivity.

- Community Workforce Initiative (CWI)
- Talent staffing and retention programs
- Training and certification