

Onyx Tower

6100 Wilshire Blvd, Los Angeles, CA 90048

Michael Hakim
6100 Wilshire Blvd. Los Angeles, CA 90048

leasing@onyxtowerla.com
(310) 888-2858 Ext: 100

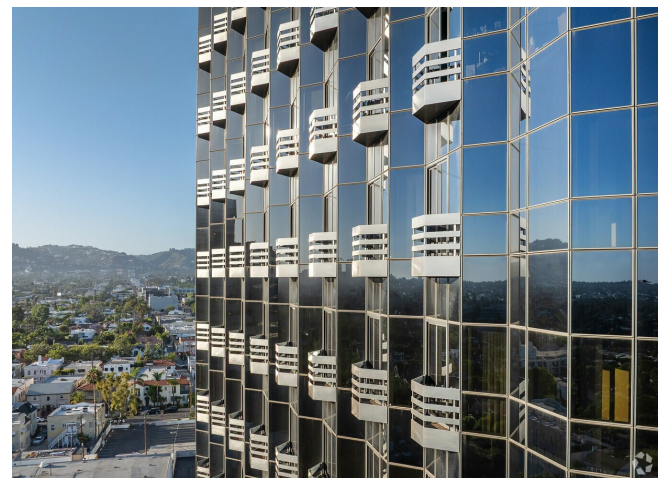


Onyx Tower

\$60.00 - \$72.00 /SF/YR

Embark on a rare combination of move-in-ready creative spec suites and large-block opportunities at a 17-story Class A high-rise office in Los Angeles, California. Introducing Onyx Tower at 6100 Wilshire Road, presenting over 230,000 square feet and convenience around every corner. The spaces are decorated with floor-to-ceiling, operable windows, and boutique balconies, providing quick escapes to enjoy fresh air and sunshine. Constant building upgrades, on-site...

- Onyx Tower is a 230,000-square-foot trophy office tower presenting creative offices offering scenic views of DTLA on every corner.
- One block from the brand-new Wilshire/Fairfax Metro Purple Line Station, shopping at the Grove, and proximity to Interstate 10, Highway 2, and 101.
- Be immersed in ground-floor retail, operable windows, enchanting balconies, a helipad, and on-site garage parking with valet service.
- Situated in the heart of Miracle Mile, across from renowned institutions such as The Peterson, LACMA, and the Academy Awards Museums.



Rental Rate:	\$60.00 - \$72.00 /SF/YR
--------------	--------------------------

Total Space Available:	115,780 SF
------------------------	------------

Max. Contiguous:	35,302.00 SF
------------------	--------------

Property Type:	Office
----------------	--------

Building Class:	A
-----------------	---

Rentable Building Area:	230,000 SF
-------------------------	------------

Year Built:	1989
-------------	------

Walk Score ®:	94 (Walker's Paradise)
---------------	------------------------

Transit Score ®:	61 (Good Transit)
------------------	-------------------

Rental Rate Mo:	Upon Request
-----------------	--------------

1st Floor Ste 100

Space Available	12,083 SF
Rental Rate	Upon Request
Date Available	Now
Service Type	TBD
Space Type	Relet
Space Use	Office
Lease Term	1 - 10 Years

Inquire for pricing.

1st Floor Ste 150

Space Available	3,460 SF
Rental Rate	Upon Request
Date Available	Now
Service Type	TBD
Space Type	Relet
Space Use	Flex
Lease Term	1 - 10 Years

Inquire for pricing.

1st Floor Ste 160

Space Available	1,600 SF
Rental Rate	Upon Request
Date Available	Now
Service Type	TBD
Space Type	Relet
Space Use	Flex
Lease Term	1 - 10 Years

Inquire for pricing.

2nd Floor Ste 200

Space Available	19,018 SF
Rental Rate	\$60.00 /SF/YR
Date Available	Now
Service Type	[object Object]
Space Type	Relet
Space Use	Office
Lease Term	1 - 10 Years

3rd Floor Ste 340/350

Space Available	4,981 SF
Rental Rate	\$60.00 /SF/YR

5	Date Available	Now	
	Service Type	[object Object]	
	Space Type	Relet	
	Space Use	Office	
	Lease Term	Negotiable	
6	4th Floor Ste 430		
	Space Available	1,971 SF	
	Rental Rate	\$60.00 /SF/YR	
	Date Available	Now	
	Service Type	[object Object]	
	Space Type	Relet	
	Space Use	Office	
	Lease Term	1 - 10 Years	
7	6th Floor Ste 600B		
	Space Available	4,515 SF	
	Rental Rate	\$60.00 /SF/YR	
	Date Available	Now	
	Service Type	[object Object]	
	Space Type	Relet	
	Space Use	Office	
8	6th Floor Ste 650		Storage space
	Space Available	2,347 SF	
	Rental Rate	\$60.00 /SF/YR	
	Date Available	Now	
	Service Type	[object Object]	
	Space Type	Relet	
	Space Use	Flex	
	Lease Term	Negotiable	
9	8th Floor Ste 800		
	Space Available	4,637 SF	
	Rental Rate	\$66.00 /SF/YR	
	Date Available	Now	
	Service Type	[object Object]	
	Space Use	Flex	

Lease Term	Negotiable
------------	------------

9th Floor Ste 900

Space Available	17,674 SF
Rental Rate	\$66.00 /SF/YR
Contiguous Area	35,302 SF
Date Available	Now
Service Type	[object Object]
Space Type	Relet
Space Use	Office
Lease Term	Negotiable

10th Floor Ste 1000

Space Available	17,628 SF
Rental Rate	\$66.00 /SF/YR
Contiguous Area	35,302 SF
Date Available	Now
Service Type	[object Object]
Space Type	Relet
Space Use	Office
Lease Term	Negotiable

11th Floor Ste 1104

Space Available	2,024 SF
Rental Rate	\$66.00 /SF/YR
Date Available	Now
Service Type	[object Object]
Space Type	Relet
Space Use	Office
Lease Term	Negotiable

11th Floor Ste 1110

Space Available	1,476 SF
Rental Rate	\$66.00 /SF/YR
Date Available	Now
Service Type	[object Object]
Space Type	Relet
Space Use	Office
Lease Term	Negotiable

14	11th Floor Ste 1150		
	Space Available	1,521 SF	
	Rental Rate	\$66.00 /SF/YR	
	Date Available	Now	
	Service Type	[object Object]	
	Space Type	Relet	
	Space Use	Office	
	Lease Term	Negotiable	
15	11th Floor Ste 1170		
	Space Available	2,732 SF	Storage space
	Rental Rate	\$66.00 /SF/YR	
	Date Available	Now	
	Service Type	[object Object]	
	Space Type	Relet	
	Space Use	Flex	
	Lease Term	Negotiable	
16	14th Floor Ste 1400		
	Space Available	5,606 SF	
	Rental Rate	\$72.00 /SF/YR	
	Date Available	Now	
	Service Type	[object Object]	
	Space Type	Relet	
	Space Use	Office	
	Lease Term	Negotiable	
17	14th Floor Ste 1420		
	Space Available	3,115 SF	
	Rental Rate	\$72.00 /SF/YR	
	Date Available	Now	
	Service Type	[object Object]	
	Space Type	Relet	
	Space Use	Office	
	Lease Term	Negotiable	
	14th Floor Ste 1430		
	Space Available	2,100 SF	
	Rental Rate	\$72.00 /SF/YR	

18

Date Available	Now
Service Type	[object Object]
Built Out As	Standard Office
Space Type	Relet
Space Use	Office
Lease Term	Negotiable

19

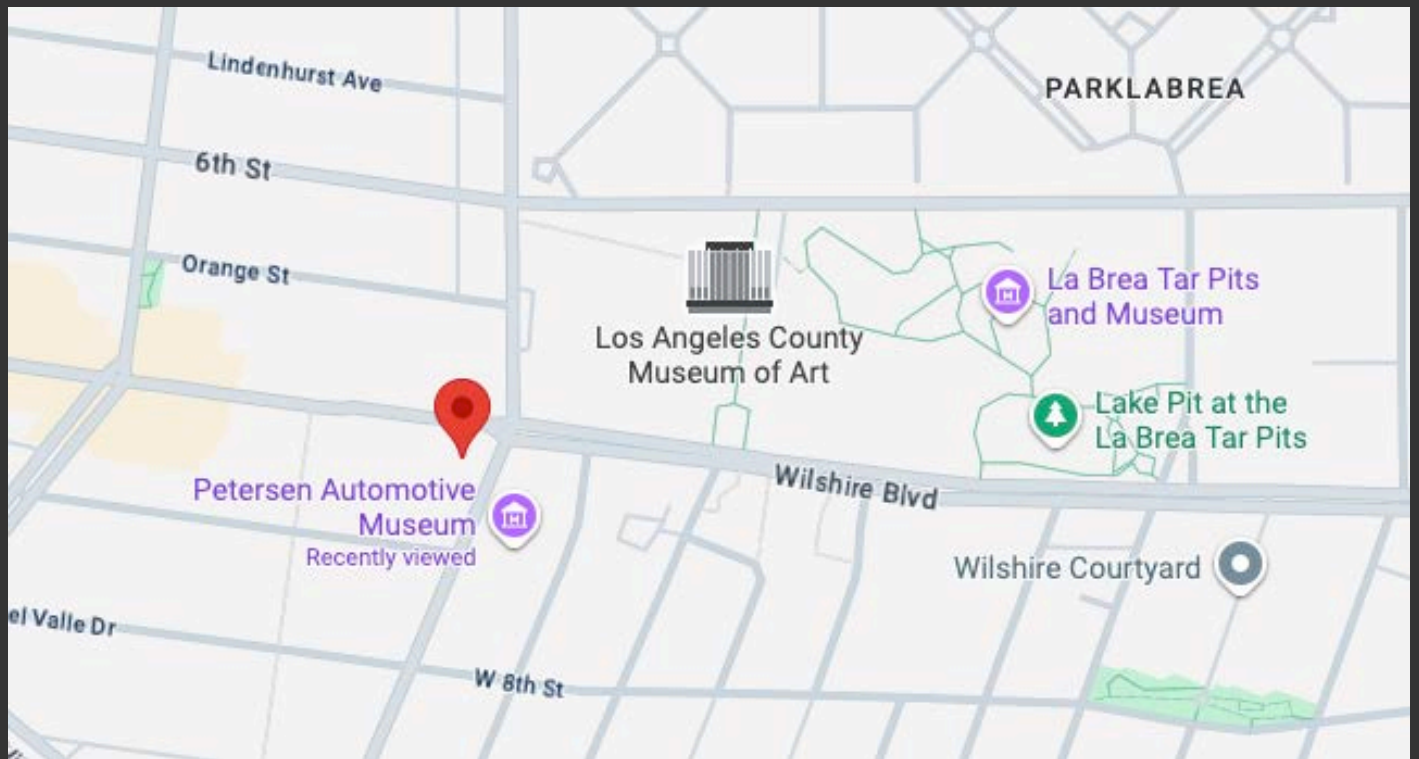
14th Floor Ste 1470

Space Available	2,079 SF
Rental Rate	\$72.00 /SF/YR
Date Available	Now
Service Type	[object Object]
Space Type	Relet
Space Use	Office
Lease Term	Negotiable

20

15th Floor Ste 1550

Space Available	5,213 SF
Rental Rate	\$72.00 /SF/YR
Date Available	Now
Service Type	[object Object]
Space Type	Relet
Space Use	Office
Lease Term	1 - 2 Years



6100 Wilshire Blvd, Los Angeles, CA 90048

Embark on a rare combination of move-in-ready creative spec suites and large-block opportunities at a 17-story Class A high-rise office in Los Angeles, California. Introducing Onyx Tower at 6100 Wilshire Road, presenting over 230,000 square feet and convenience around every corner. The spaces are decorated with floor-to-ceiling, operable windows, and boutique balconies, providing quick escapes to enjoy fresh air and sunshine. Constant building upgrades, on-site engineering, and hands-on property management staff swiftly address needs. Plus, with an above-market parking ratio and valet services, parking has never been easier for all office visitors.

Onyx Tower's 17th-floor penthouse is home to Pluto LA and encompasses a 10,000-square-foot rooftop area featuring 360-degree views and an active 2,500-square-foot helipad often used for music videos, film productions, and helicopter landings. Notable celebrity clients who have worked and experienced this landmark property include Drake, Rihanna, Bad Bunny, Jake Paul, Mike Tyson, Jimmy Kimmel, and many more.

Through the windows of the Onyx Tower, one can see the Hollywood Sign, Century City Towers, Downtown Los Angeles' skyline, Beverly Hills homes, and more. Due to the office complex's central Miracle Mile location, building tenants can easily grab their morning coffee at The Grove, meet a client at the latest Los Angeles County Museum of Art (LACMA) exhibit, and hop on a complimentary shuttle to enjoy lunch outdoors. Then, at the end of the day, employees and clients can connect at happy hour on 3rd Street before their quick commute home via Interstate 10 or the 2 and 10 Highways. The undeniable vibrancy of life in Los Angeles surrounds Onyx Tower, which is all the more reason to upgrade business operations here.

Property Photos



Property Photos



Property Photos

