

MATERIAL & FINISH SYMBOL LEGEND

NOTE:
INTERIOR FINISHES TO BE CLASS "3"
BETTER OR BETTER

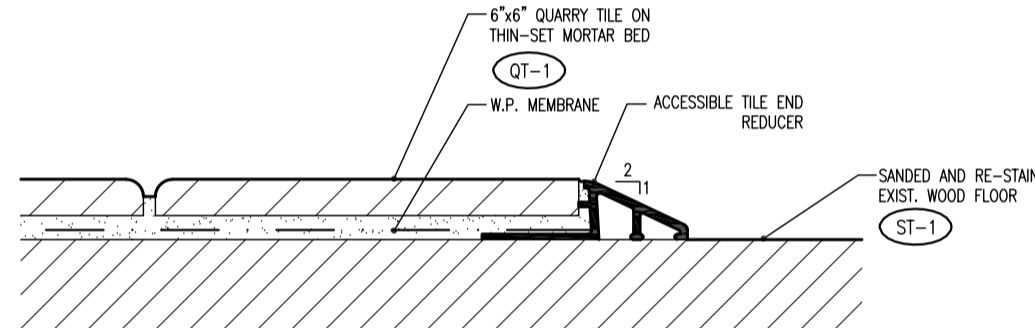
| | | | | |
|--|---|---|--|---|
| P-1 PAINT (STEEL ANGLE, STEEL COLUMN, RAILING) MANUFACTURER: BENJAMIN MOORE MODEL # 2152-10 COLOR: BLACK FINISH: MATTE | P-7 PAINT (BAR "Y" CEILING) MANUFACTURER: TBD COLOR: TBD FINISH: TBD | CS-1 CLEAR SEALER (EXIST. BRICK) MANUFACTURER: TBD COLOR: TBD FINISH: TBD REMARKS: | S-1 STONE COUNTERTOP (BAR) MANUFACTURER: TBD COLOR: WHITE CARRARA MARBLE CONTACT: | VWC-1 VINYL WALL COVERING MANUFACTURER: TBD COLOR: TBD CONTACT: |
| P-2 PAINT (BACKBAR MILLWORK) MANUFACTURER: TBD COLOR: WHITE FINISH: TBD | P-8 PAINT (EXIST. BRICK) MANUFACTURER: TBD COLOR: TBD FINISH: TBD | FT-1 MOSAIC FLOOR TILE MANUFACTURER: DALTILE COLLECTION: KEYSTONES PATTERN: SPH38 COLORS: 73% D017 "ARCTIC WHITE", 16% "BLACK" D311; 11% "CINNAMON RANGE" D007 GROUT: MAPED KERACOLOR "BLACK" 10 | S-2 STONE COUNTERTOP (TOILET ROOMS) MANUFACTURER: DALTILE COLOR: ABSOLUTE BLACK GRANITE C771 CONTACT: DALTILE.COM | VWC-2 VINYL WALL COVERING (TOILET ROOMS) MANUFACTURER: T.B.D. COLOR: TBD CONTACT: |
| P-3 PAINT (HOST) MANUFACTURER: TBD COLOR: WHITE FINISH: TBD | A-1 MILK WHITE ACRYLIC (LUNGES & LUGER STEPS) MANUFACTURER: 3M MODEL: #850-005 "NOV" TRANSLUCENT VINYL FILM COLOR: "CLEAR" ACRYLIC SHEET W/ TRANS. FILM FINISH: OUTER SURFACE OF ACRYLIC "MATTE" REMARKS: APPLY FILM TO INNER SURFACE OF ACRYLIC | FT-2 MOSAIC FLOOR TILE MANUFACTURER: DALTILE MODEL # D311WSP1P 1X1 TILES COLOR: "BLACK" D311 GROUT: MAPED KERACOLOR "BLACK" 10 | ST-1 WOOD STAIN (FLOORS) MANUFACTURER: TBD COLOR: TBD FINISH: TBD REMARKS: MATCH SAMPLE FOR ARCH. APPROVAL | WD-1 STAINED VERTICAL BACKBOARD PANELING DESCRIPTION: RED OAK "J" GRADED PLYWOOD PANELING FINISH: MATCH ST-2 STAIN |
| P-4 PAINT (SHOFT) MANUFACTURER: TBD COLOR: TBD FINISH: TBD | ACT-1 LAY-IN METAL CEILING TILE GRID SYSTEM MANUFACTURER: ARMSTRONG MODEL #: COLOR: WHITE FINISH: | ST-2 WOOD STAIN (MILLWORK) MANUFACTURER: TBD COLOR: TBD FINISH: TBD REMARKS: MATCH SAMPLE FOR ARCH. APPROVAL | WT-1 3"x6" SUBWAY TILE MANUFACTURER: DALTILE COLLECTION: WATERHOUSE SQUARE COLOR: SEMI-GLOSS WHITE 0100 CONTACT: DALTILE.COM | |
| P-5 PAINT (BLACKBOARD) MANUFACTURER: TBD COLOR: TBD FINISH: TBD | AM-1 ANTIQUE MIRROR FINISH MANUFACTURER: FORTSON GLASS CO MODEL: ANTIQUE MIRROR MEDIUM CONTACT: TOLUSS.COM | QT-1 6"x6" QUARRY TILE MANUFACTURER: DAL-TILE MODEL # 1005 COLOR: GRAY ACCESSORIES: CONE BASE W/ MINIMUM 3/8" RADIUS AND ALL TRIMS AS REQ'D. FINISH: APPLY COMMERCIAL SEALER PER MANU. RECOMMENDATIONS TO INSTALLED TILE AND GROUT GROUT: TBD | ST-3 WOOD STAIN (WANSICOT) MANUFACTURER: TBD COLOR: TBD FINISH: TBD REMARKS: MATCH SAMPLE FOR ARCH. APPROVAL | WT-2 3"x6" GLAZED WALL TILE W/ BULLNOSE (TOILET ROOMS) MANUFACTURER: DALTILE STYLE: WATERHOUSE SQUARE GLAZED CERAMIC WALL TILE COLOR: BLACK HILL NOTE: W/ BULLNOSE GROUT COLOR: MAPED BLACK-10 |
| P-6 PAINT (CEILING) MANUFACTURER: TBD COLOR: TBD FINISH: TBD | S-1 6"x VINYL BASE MANUFACTURER: JOHNSENITE MODEL # 6"x MANDALAY MILLWORK BASE COLOR: 40 BLACK | SV-1 FIELD STONE VENEER (PREPARE) MANUFACTURER: REALSTONE SYSTEMS STYLE: ESTATE STONE COLOR: GREYSTONE GOLD PANEL FINISH: SPLIT FACE REMARKS: | | |

FLOOR FINISH PLAN NOTES

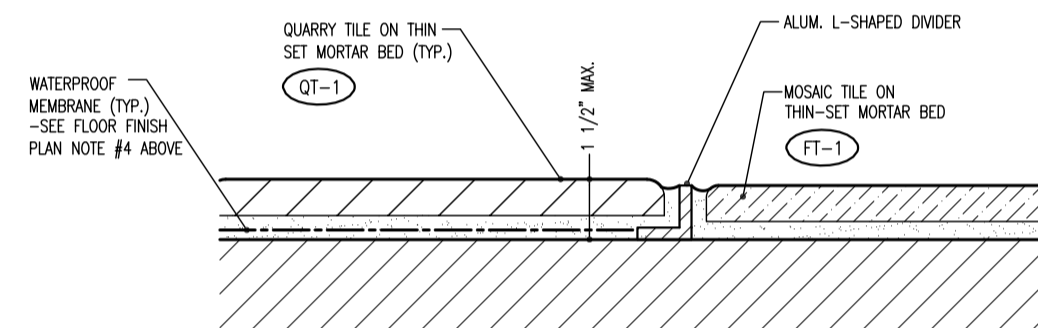
- ALL FLOOR TRANSITIONS SHALL BE ACCESSIBLE.
- ALL FINISHES INSTALLED SHALL BE CLASSIFIED AS "SLIP RESISTANT" WITH A STATIC COEFFICIENT OF FRICTION OF 0.6 OR GREATER UNDER ASTM D2047, G.C. TO PROVIDE ARCHITECT/OWNER WITH DOCUMENTATION PRIOR TO INSTALLATION.
- FLOORING CONTRACTOR SHALL VERIFY ALL FLR. CONDITIONS AND MATERIAL DIMENSIONS IN FIELD. PREPARE WD. FLOOR AS REQ'D. FOR PROPER FLOORING INSTALLATION.
- AT SERVICE AREAS TO RECEIVE NEW QUARRY TILE, SLIP TILES SLIGHTLY TO DRAINS. QUARRY TILE FLOORS TO HAVE SMOOTH SURFACE UNDER ALL EQUIPMENT; ALL WALKWAYS TO HAVE AN ABRASIVE TEXTURE.
- FLOOR WATERPROOFING MEMBRANE @ WET AREAS; EXTEND UP WALL CONST. 6" @ PERIMETER. WATERPROOFING MEMBRANE BY LATICRETE, MODEL "HYDRO BAN".

FLOOR FINISH PLAN KEYNOTES

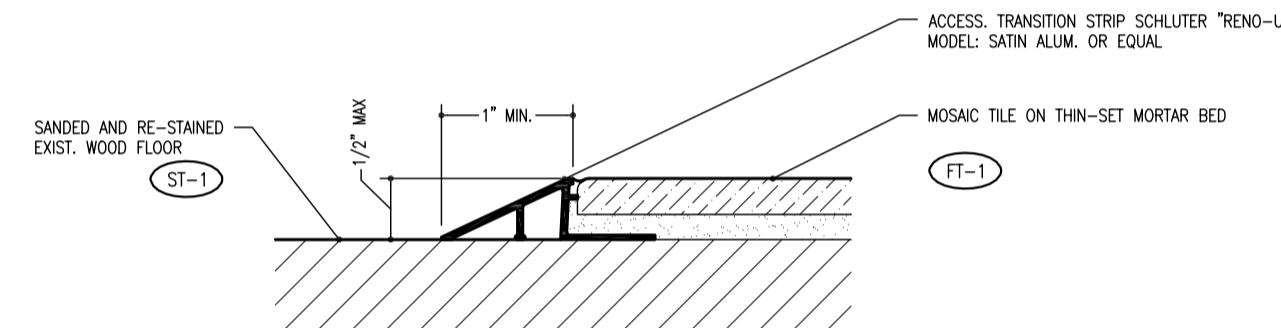
- | | |
|---|--|
| 1 ACCESSIBLE ALUMINUM THRESHOLD (CLEAR ANODIZED) - WHEN AVAILABLE, COORDINATE INSTALLATION W/ STOREFRONT/DOOR | 5 FLOOR SINK LOCATION -SEE PLUMBING DRAWINGS |
| 2 W.P. MEMBRANE | 6 INSULATED PRE-ENGINEERED WALK-IN COOLER FLOOR W/ INTEGRATED RAMP |
| 3 TYP. BAR DIE WALL CONSTRUCTION -SEE AS INT. ELEVATIONS | 7 HUB FLOOR DRAIN LOCATION -SEE PLUMBING DRAWINGS |
| 4 FLOOR DRAIN LOCATION -SEE PLUMBING DRAWINGS | |



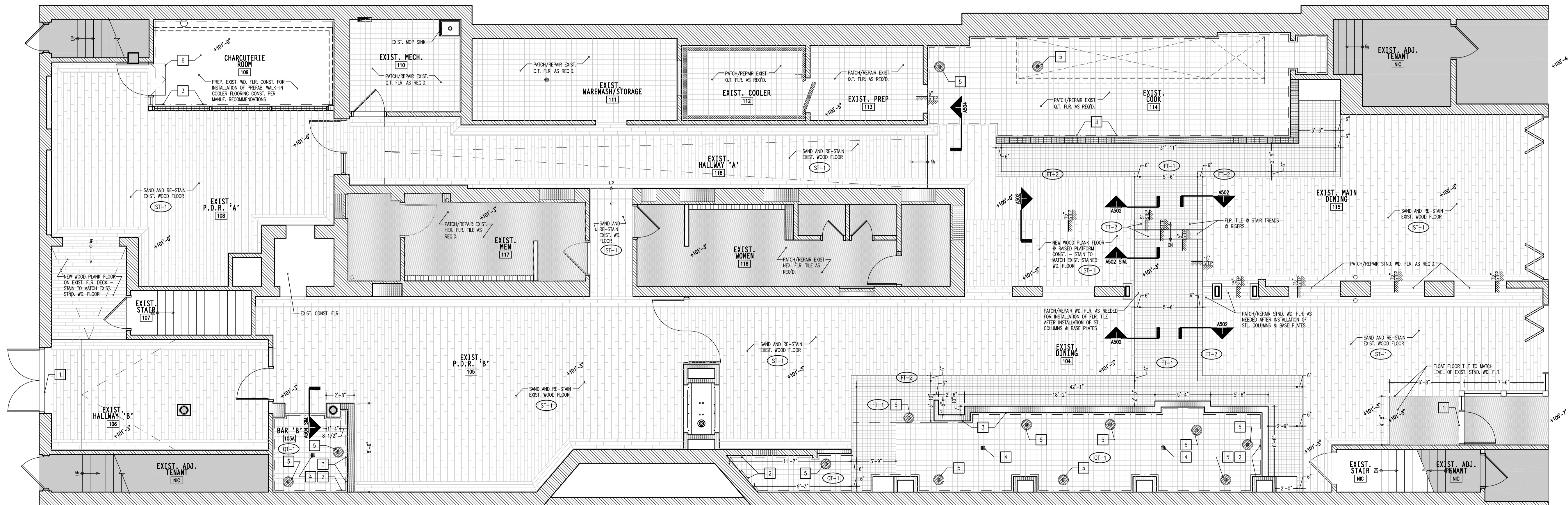
A504 TRANSITION DETAIL
SCALE: 3" = 1'-0"



A503 TRANSITION DETAIL
SCALE: 6" = 1'-0"



A502 TRANSITION DETAIL
SCALE: 6" = 1'-0"



A501 FLOOR FINISH PLAN
SCALE: 3/16" = 1'-0"

AREAS NOT IN CONTRACT (N.I.C.)

+ barker/nestor +
ARCHITECTURE + DESIGN
608 W. CECILIA RD. UNIT 302 CHICAGO, IL 60616
TEL: 847.763.1692 FAX: 847.763.1697

PREPARED FOR:
HARBOR
1312 S WABASH AVE. CHICAGO, IL 60605

PROPOSED INTERIOR RENOVATIONS FOR:
HARBOR
RESTAURANT & BAR
1312 S WABASH AVE.
CHICAGO, IL 60605

| | | |
|-----------------------|-----------------------|----------------|
| PROJECT NUMBER: N1808 | FILE NAME: HCL AS.DWG | DATE ISSUED: |
| DRAWN BY: | CHECKED: | DRAWING TITLE: |
| APPROVED: | DRAWING SCALE: | AS SHOWN |

PROFESSIONAL SEAL:



SHEET NUMBER:

A5 OF 16