

For Sale

Circle Frontage Land

12.99 Acres on Ross Clark Circle



1800 Block Ross Clark Circle

Dothan, Alabama 36301

Property Highlights

- Lots can be divided
- Located in Southeast Dothan, inside Ross Clark Cir
- Near Publix Shopping Center, County Farm Complex & County Health Department
- Adjacent to Lighted Corner
- 28,111 Vehicles Per Day
- Less than 2 miles from the Regional Medical Center
- Parcel ID: 10-09-31-2-001-012.000

Property Description

Property is suitable for multiple purposes such as strip center, apartment complex, mini-storage & more. 1,150 feet of frontage on Ross Clark Circle and over 900 feet of frontage on Coe Dairy Road on rear of property.

OFFERING SUMMARY

Sale Price	Call For Pricing
Lot Size	12.99 Acres

DEMOGRAPHICS

Stats	Population	Avg. HH Income
3 Miles	28,234	\$43,334
5 Miles	51,580	\$51,928
15 Miles	122,661	\$57,910

For more information

Kenny Whatley

O: 334 699 8000 | C: 334 596 7890
kwhatley@talcor.com

Shannon Auty

O: 334 699 8000 | C: 334 406 1161
sauty@talcor.com



NO WARRANTY OR REPRESENTATION, EXPRESS OR IMPLIED, IS MADE AS TO THE ACCURACY OF THE INFORMATION CONTAINED HEREIN, AND THE SAME IS SUBMITTED SUBJECT TO ERRORS, OMISSIONS, CHANGE OF PRICE, RENTAL OR OTHER CONDITIONS, PRIOR SALE, LEASE OR FINANCING, OR WITHDRAWAL WITHOUT NOTICE, AND OF ANY SPECIAL LISTING CONDITIONS IMPOSED BY OUR PRINCIPALS. NO WARRANTIES OR REPRESENTATIONS ARE MADE AS TO THE CONDITION OF THE PROPERTY OR ANY HAZARDS CONTAINED THEREIN ARE ANY TO BE IMPLIED.

107 Hidden Glen Way,
Dothan, AL 36303
334 699 8000 tel
talcor.com



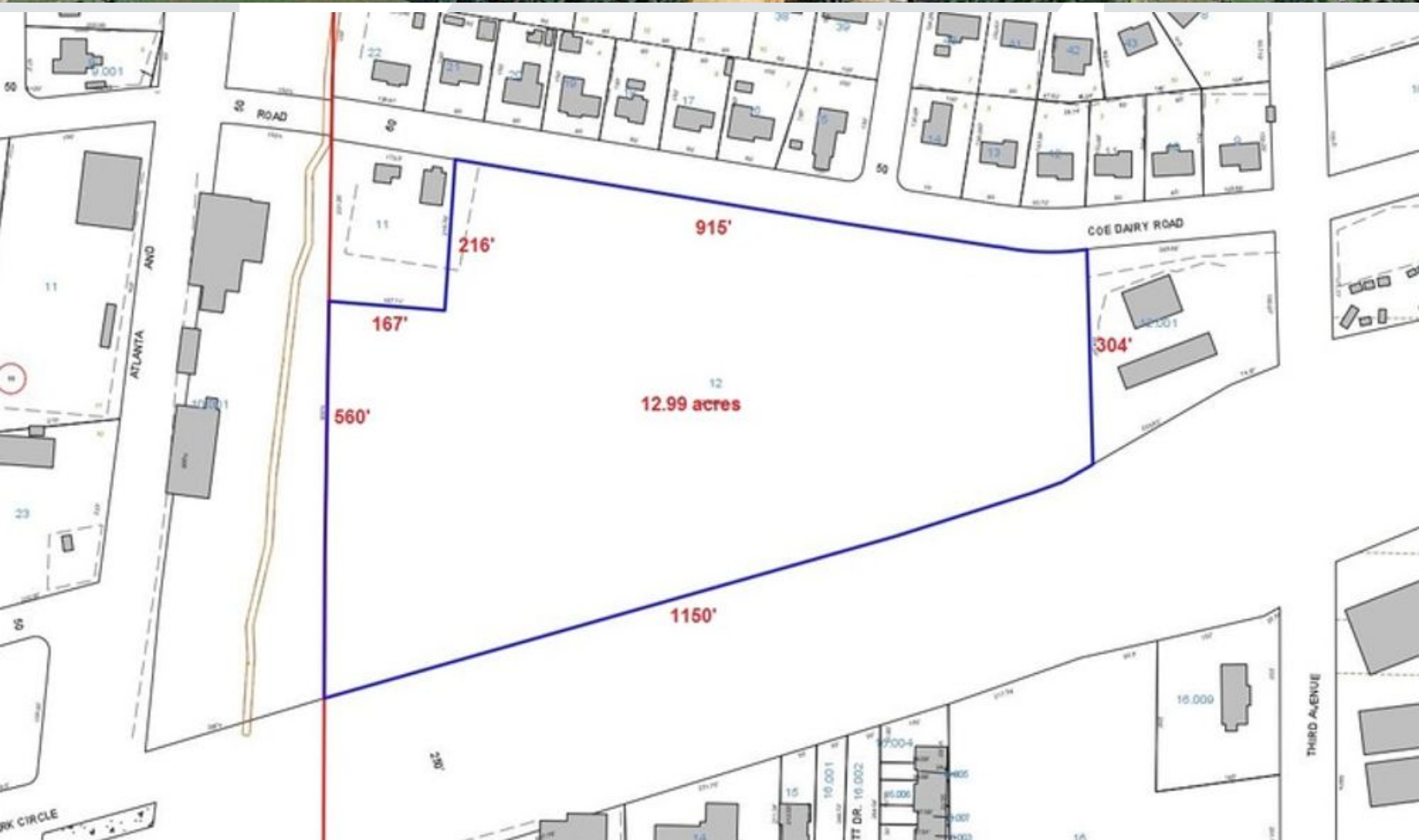
Additional Photos



For Sale

Circle Frontage Land

12.99 Acres | Call for Pricing

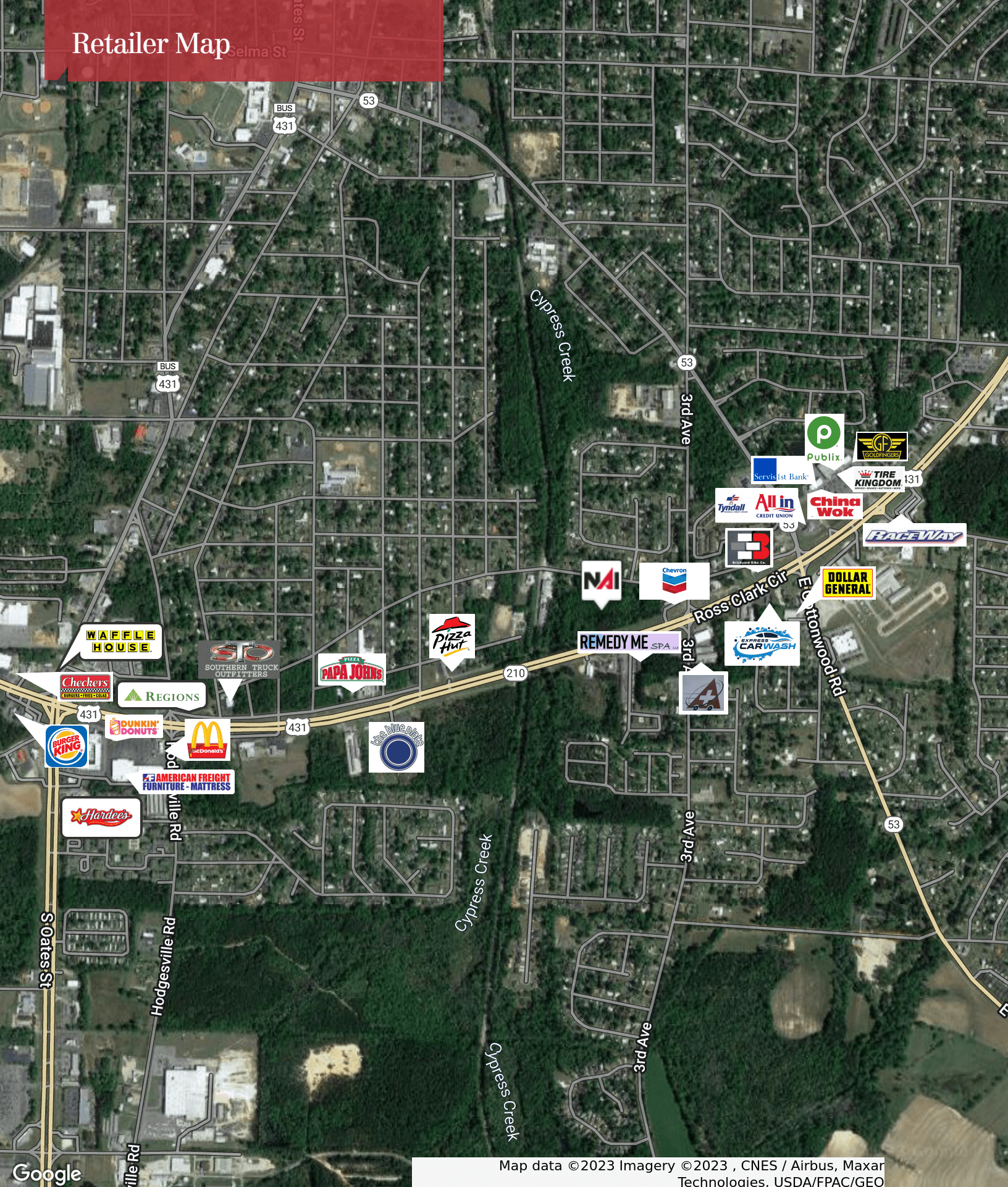


NO WARRANTY OR REPRESENTATION, EXPRESS OR IMPLIED, IS MADE AS TO THE ACCURACY OF THE INFORMATION CONTAINED HEREIN, AND THE SAME IS SUBMITTED SUBJECT TO ERRORS, OMISSIONS, CHANGE OF PRICE, RENTAL OR OTHER CONDITIONS, PRIOR SALE, LEASE OR FINANCING, OR WITHDRAWAL WITHOUT NOTICE, AND OF ANY SPECIAL LISTING CONDITIONS IMPOSED BY OUR PRINCIPALS. NO WARRANTIES OR REPRESENTATIONS ARE MADE AS TO THE CONDITION OF THE PROPERTY OR ANY HAZARDS CONTAINED THEREIN ARE ANY TO BE IMPLIED.

107 Hidden Glen Way,
Dothan, AL 36303
334 699 8000 tel
talcor.com



Retailer Map

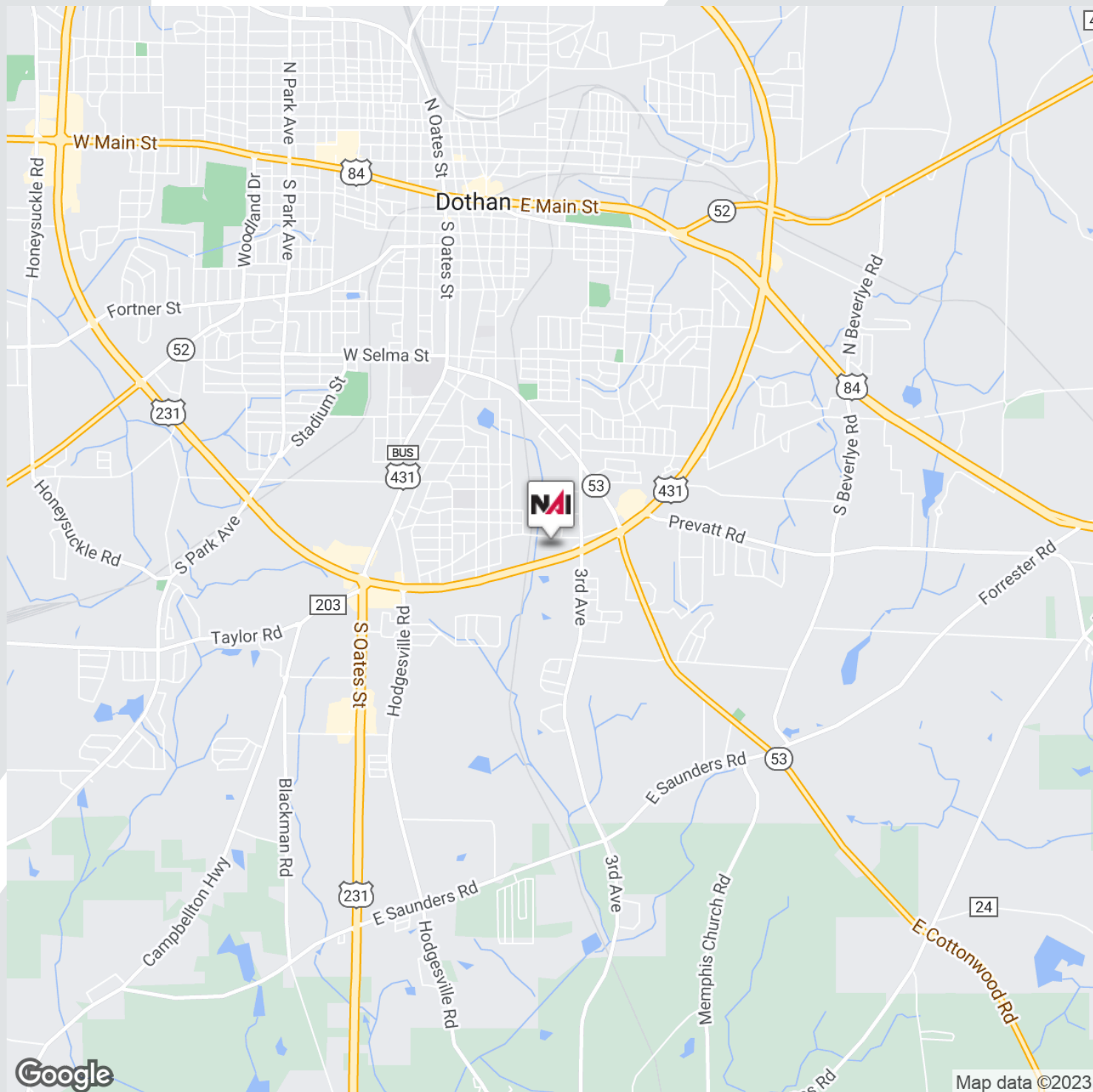


Map data ©2023 Imagery ©2023 , CNES / Airbus, Maxar Technologies, USDA/FPAC/GEO

For Sale

Circle Frontage Land

12.99 Acres

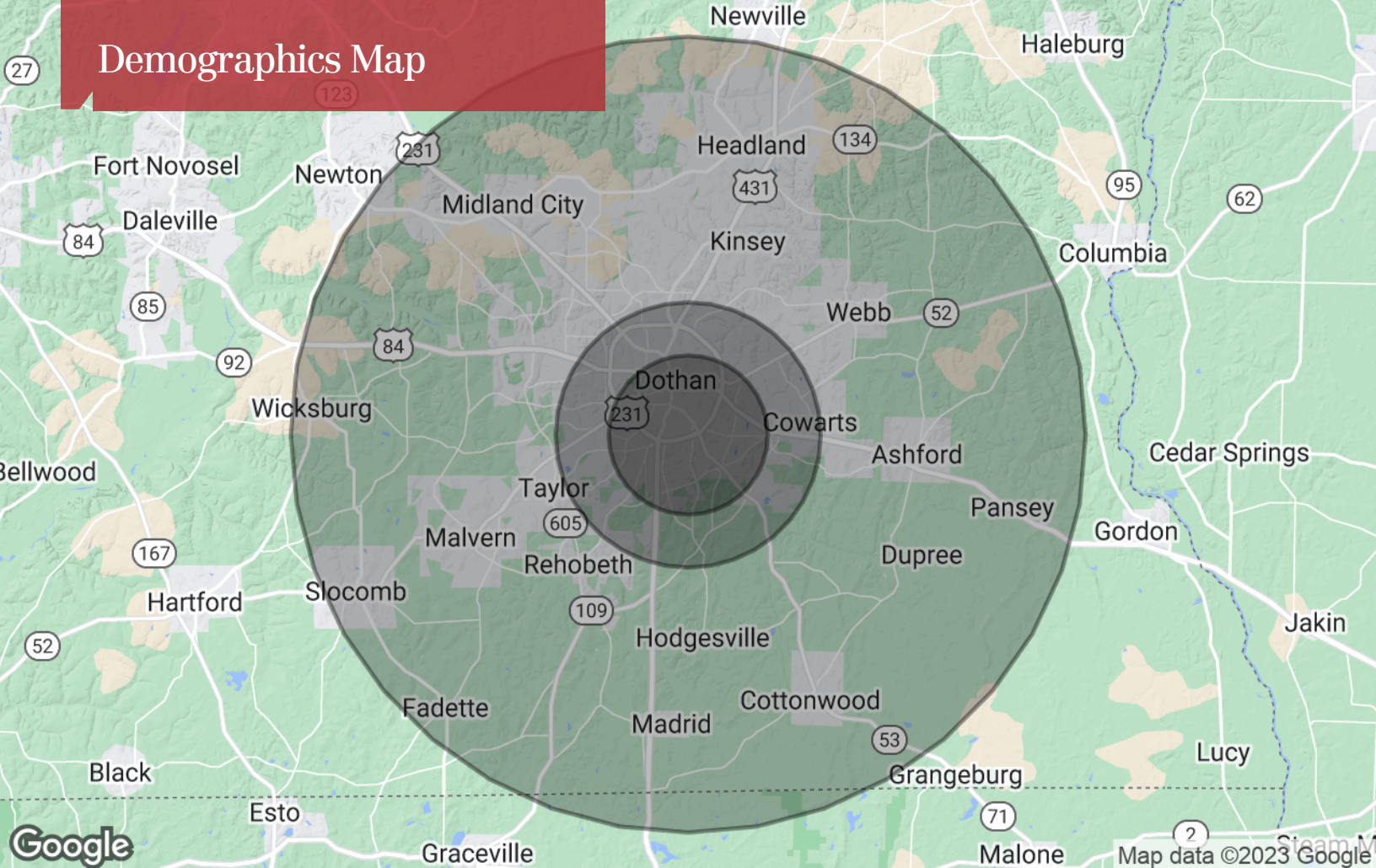


NO WARRANTY OR REPRESENTATION, EXPRESS OR IMPLIED, IS MADE AS TO THE ACCURACY OF THE INFORMATION CONTAINED HEREIN, AND THE SAME IS SUBMITTED SUBJECT TO ERRORS, OMISSIONS, CHANGE OF PRICE, RENTAL OR OTHER CONDITIONS, PRIOR SALE, LEASE OR FINANCING, OR WITHDRAWAL WITHOUT NOTICE, AND OF ANY SPECIAL LISTING CONDITIONS IMPOSED BY OUR PRINCIPALS. NO WARRANTIES OR REPRESENTATIONS ARE MADE AS TO THE CONDITION OF THE PROPERTY OR ANY HAZARDS CONTAINED THEREIN ARE ANY TO BE IMPLIED.

107 Hidden Glen Way,
Dothan, AL 36303
334 699 8000 tel
talcor.com



Demographics Map



Population

	3 Miles	5 Miles	15 Miles
TOTAL POPULATION	28,234	51,580	122,661
MEDIAN AGE	38.4	39.4	40.4
MEDIAN AGE (MALE)	36.4	36.8	38.1
MEDIAN AGE (FEMALE)	39.8	41.4	42.1

Households & Income

	3 Miles	5 Miles	15 Miles
TOTAL HOUSEHOLDS	13,385	24,195	55,420
# OF PERSONS PER HH	2.1	2.1	2.2
AVERAGE HH INCOME	\$43,334	\$51,928	\$57,910
AVERAGE HOUSE VALUE	\$110,216	\$130,249	\$142,036

Race

	3 Miles	5 Miles	15 Miles
% WHITE	48.8%	58.7%	71.5%
% BLACK	49.4%	39.6%	26.6%
% ASIAN	0.9%	0.9%	0.9%
% HAWAIIAN	0.0%	0.0%	0.0%
% INDIAN	0.4%	0.3%	0.3%
% OTHER	0.4%	0.4%	0.7%

Ethnicity

	3 Miles	5 Miles	15 Miles
% HISPANIC	3.6%	3.6%	3.3%

* Demographic data derived from 2020 ACS - US Census