

# FLEX SPACE FOR LEASE CORRIDOR INDUSTRIAL PARK

8725 Bollman Pl., Savage, MD 20763

Available: 2,604 SF

**LEE &  
ASSOCIATES**  
COMMERCIAL REAL ESTATE SERVICES



#### LISTING DATA

**BAY 10:** 2,604 SF  
**LOADING:** 1 Drive-in  
**PRICE:** \$14 plus \$3 NNN

#### BUILDING DATA

**TOTAL BUILDING SF:** 28,755 SF  
**ZONING:** M2  
**SUBMARKET:** Howard County  
**YEAR BUILT:** 1985

#### PROPERTY HIGHLIGHTS

- 14'-17' clear
- Less than 3 miles to NSA
- Immediate access to 95 and 32
- 120/208v 3 phase, 200 AMPS
- Columns 33' wide x 40' deep
- Wet sprinkler
- 16 wide by 12 high door



#### PROPERTY OVERVIEW

Rarely available small industrial suite for lease in the heart of the BW Corridor. This suite is 2,604 SF and offers an oversized, 16 wide by 12 high drive in door. The property is M2 so allows for a variety of uses.

1/3rd Office | 2/3rd Warehouse

**Kate Jordan, SIOR**  
Principal  
410.336.5314  
kjordan@lee-associates.com

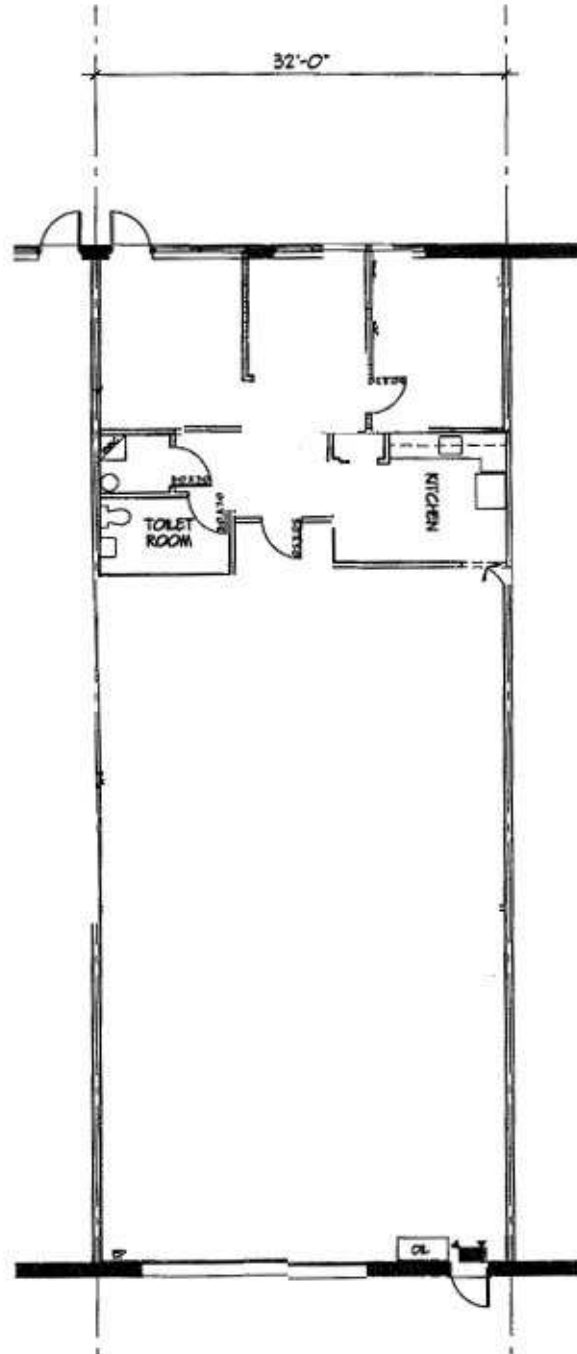
**Marley Black, SIOR**  
Principal  
443.741.4050  
mwelsh@lee-associates.com

All information furnished regarding property for sale, rental or financing is from sources deemed reliable, but no warranty or representation is made to the accuracy thereof and same is submitted to errors, omissions, change of price, rental or other conditions prior to sale, lease or financing or withdrawal without notice. No liability of any kind is to be imposed on the broker herein.

# FLEX SPACE FOR LEASE CORRIDOR INDUSTRIAL PARK

8725 Bollman Pl., Savage, MD 20763

Available: 2,604 SF



16 wide by 12 high drive in door

**Kate Jordan, SIOR**  
Principal  
410.336.5314  
kjordan@lee-associates.com

**Marley Black, SIOR**  
Principal  
443.741.4050  
mwelsh@lee-associates.com

All information furnished regarding property for sale, rental or financing is from sources deemed reliable, but no warranty or representation is made to the accuracy thereof and same is submitted to errors, omissions, change of price, rental or other conditions prior to sale, lease or financing or withdrawal without notice. No liability of any kind is to be imposed on the broker herein.