

FOR LEASE

429 N LIME AVENUE

429 N Lime Avenue #1 Sarasota, FL 34237



OFFERING SUMMARY

Lease Rate:	\$28.00 SF/yr (MG)
Building Size:	5,000 SF
Available SF:	2,000 - 2,500 SF
Lot Size:	16,992 SF
Renovated:	2024
Zoning:	DTE

PROPERTY OVERVIEW

Modern industrial office with a touch of minimalist sophistication. Newly renovated with a lot of high end finishes making it both professional and stylish.

PROPERTY HIGHLIGHTS

- The building and offices were completely renovated in 2024.
- Office suite features black painted exposed ceiling giving it a more open feel and edgy look.
- Reception, conference room, 5 private offices, 1 large room for an open bull pen.
- Kitchenette for staff convenience.
- Designed beautifully with white walls, gold accents, LED light fixtures, glass doors, and polished concrete flooring.
- Adequate parking, signage, and storage.
- An adjacent 500 SF air conditioned warehouse is available if needed.

Stacy Rosenberg
(727) 488-4814

Mousa Wakileh
(941) 960-9336

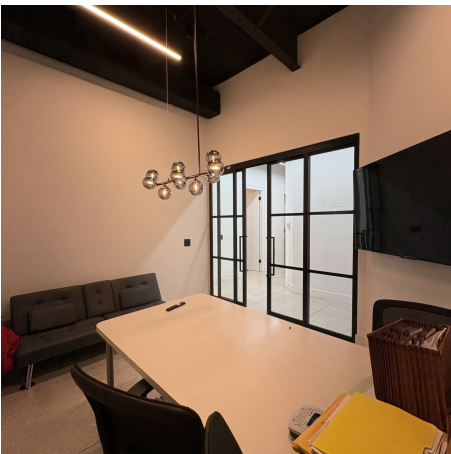
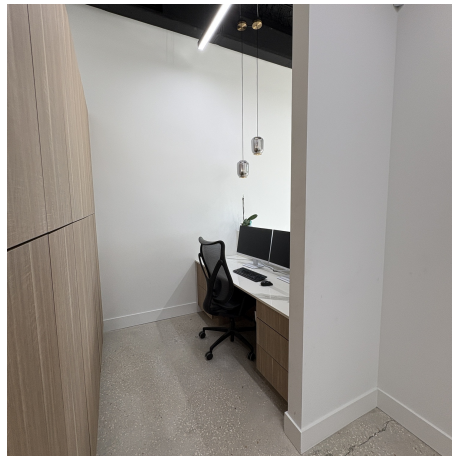


COLDWELL BANKER
COMMERCIAL
REALTY

LEASE

429 N LIME AVENUE

429 N Lime Avenue #1 Sarasota, FL 34237



Stacy Rosenberg
(727) 488-4814

Mousa Wakileh
(941) 960-9336

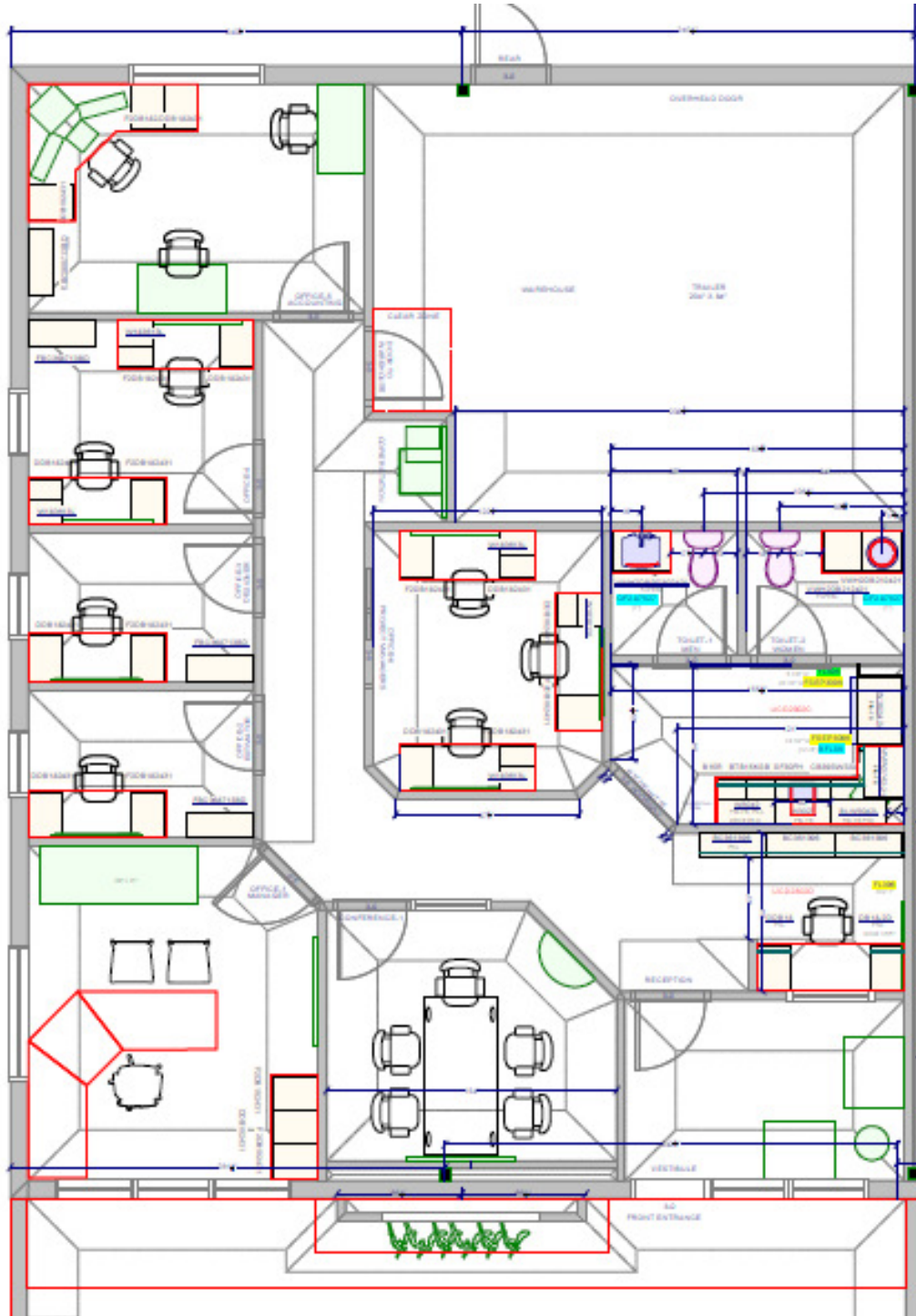


COLDWELL BANKER
COMMERCIAL
REALTY

LEASE

429 N LIME AVENUE

429 N Lime Avenue #1 Sarasota, FL 34237



Stacy Rosenberg
(727) 488-4814

Mousa Wakileh
(941) 960-9336



COLDWELL BANKER
COMMERCIAL
REALTY

LEASE

429 N LIME AVENUE

429 N Lime Avenue #1 Sarasota, FL 34237



STACY ROSENBERG

Commercial Real Estate Specialist

Direct: (727) 488-4814

stacy.rosenberg@cbrealty.com



MOUSA WAKILEH

Commercial Real Estate Advisor, Certified International Property Specialist

Direct: (941) 960-9336

mousa.wakileh@cbrealty.com

Stacy Rosenberg
(727) 488-4814

Mousa Wakileh
(941) 960-9336



COLDWELL BANKER
COMMERCIAL
REALTY