

For Lease

3,710 SF | \$2.50 SF/month

Retail Space



2201-2211 Pacific Coast Highway

Lomita, California 90717

Property Highlights

- Busy signalized intersection of PCH and Narbonne (est. at 78,000 cars per day)
- Former bank space available and adjacent 8,210 SF space recently leased to a pet store
- Across the street from a new Target, CVS, WSS Shoe Store and Dollar Tree
- Ample parking: 41 spaces
- Located within one mile of Palos Verdes Peninsula Cities and Torrance Excellent demographics with spendable income

Property Overview

3,710 SF spaces (can be redemised) on the same corner as new tenants Target, Grocery Outlet, Dollar Tree and WSS!

Offering Summary

Lease Rate:	2.50 SF/month (NNN)
Building Size:	11,928 SF
Available SF:	3,710 SF
Lot Size:	32,670 SF

Demographics	1 Mile	2 Miles	3 Miles
Total Population	27,154	79,209	183,853
Average HH Income	\$93,213	\$109,029	\$108,177

For More Information

Sheri Messerlian

O: 310 436 1762

smesserlian@naicapital.com | CalDRE #00450571

Ilmar Kalviste

O: 310 878 6923

ikalviste@naicapital.com | CalDRE #01331187

For Lease

3,710 SF | \$2.50 SF/month

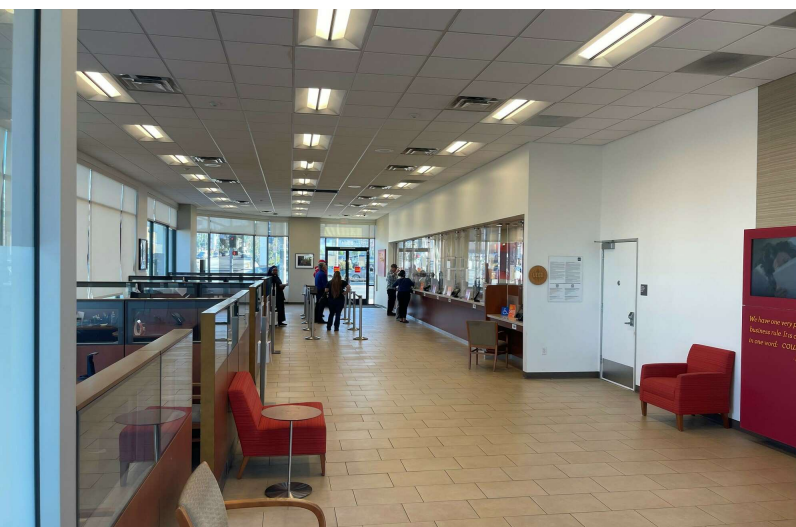
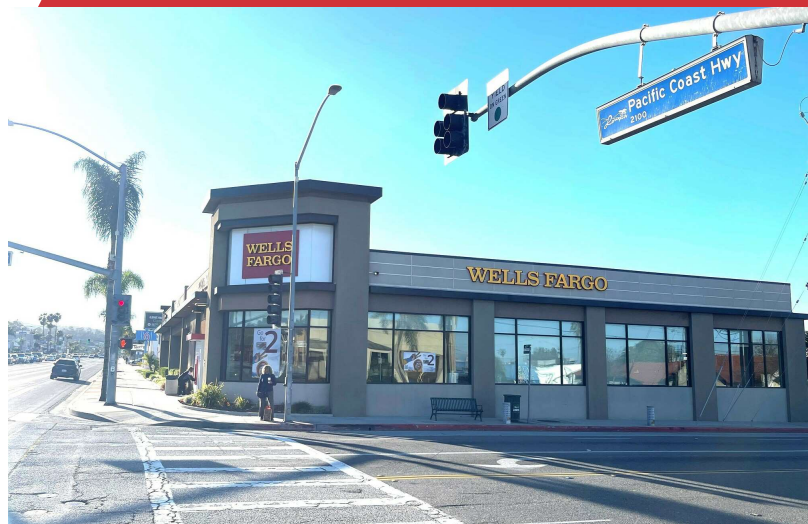
Retail Space



For Lease

3,710 SF | \$2.50 SF/month

Retail Space



No warranty, express or implied, is made as to the accuracy of the information contained herein. This information is submitted subject to errors, omissions, change of price, rental or other conditions, withdrawal without notice, and is subject to any special listing conditions imposed by our principals. Cooperating brokers, buyers, tenants and other parties who receive this document should not rely on it, but should use it as a starting point of analysis, and should independently confirm the accuracy of the information contained herein through a due diligence review of the books, records, files and documents that constitute reliable sources of the information described herein. Logos are for identification purposes only and may be trademarks of their respective companies. NAI Capital Commercial, Inc. CAL DRE Lic. #02130474

970 W. 190th Street, Suite 100
Torrance, CA 90502
310 878 6900 tel
naicapital.com