



EQT | EXETER



5803 N 54th Street

Tampa, FL

Building Size: 56,000 SF | 56,000 SF of Industrial Space Available

VISIT [EQTEXETER.COM](https://eqtexeter.com)

5803 N 54th Street

Tampa, FL

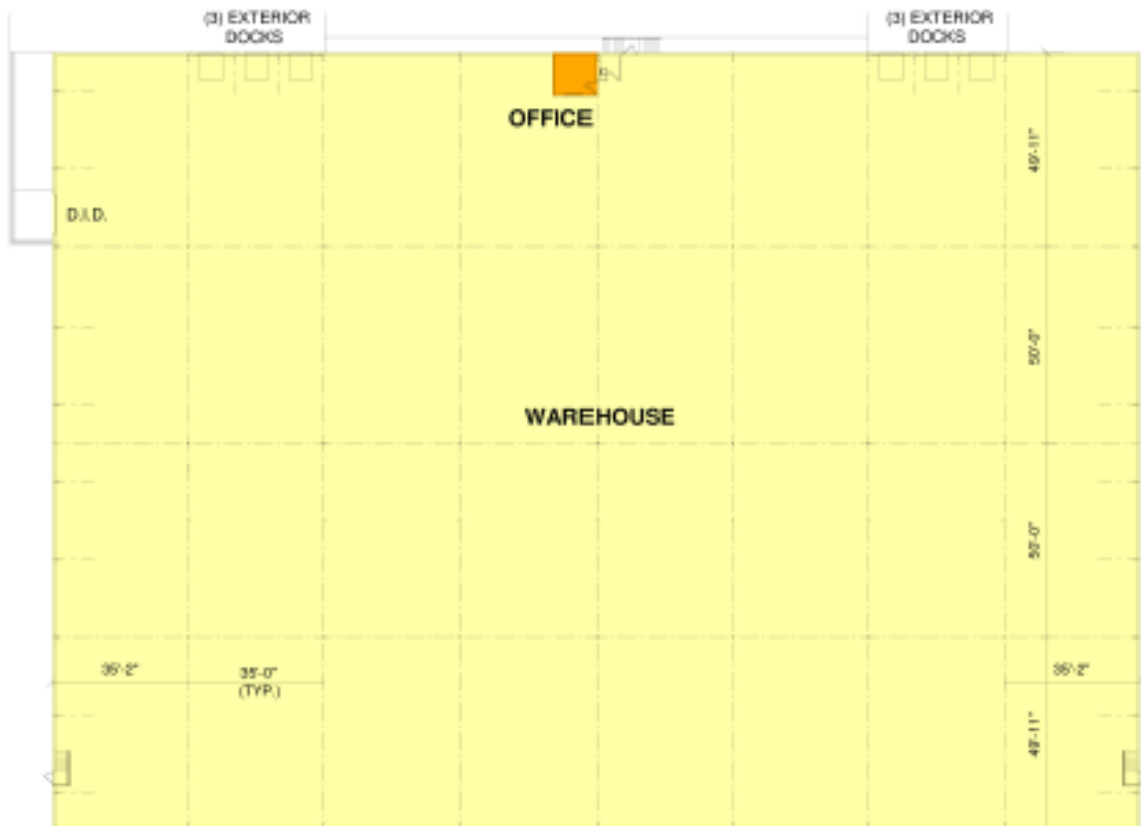
Building Size: 56,000 SF | Building Availability: 56,000 SF

Building Specifications

- Industrial space available
- 56,000 SF total building size
- 56,000 SF available size
- 35' x 50' column spacing
- 2,500 SF of office space
- 30' to 35' clear height
- 6 dock doors
- 1 drive-in doors
- LED (with motion sensors) lighting
- Wet sprinkler system

Additional Information

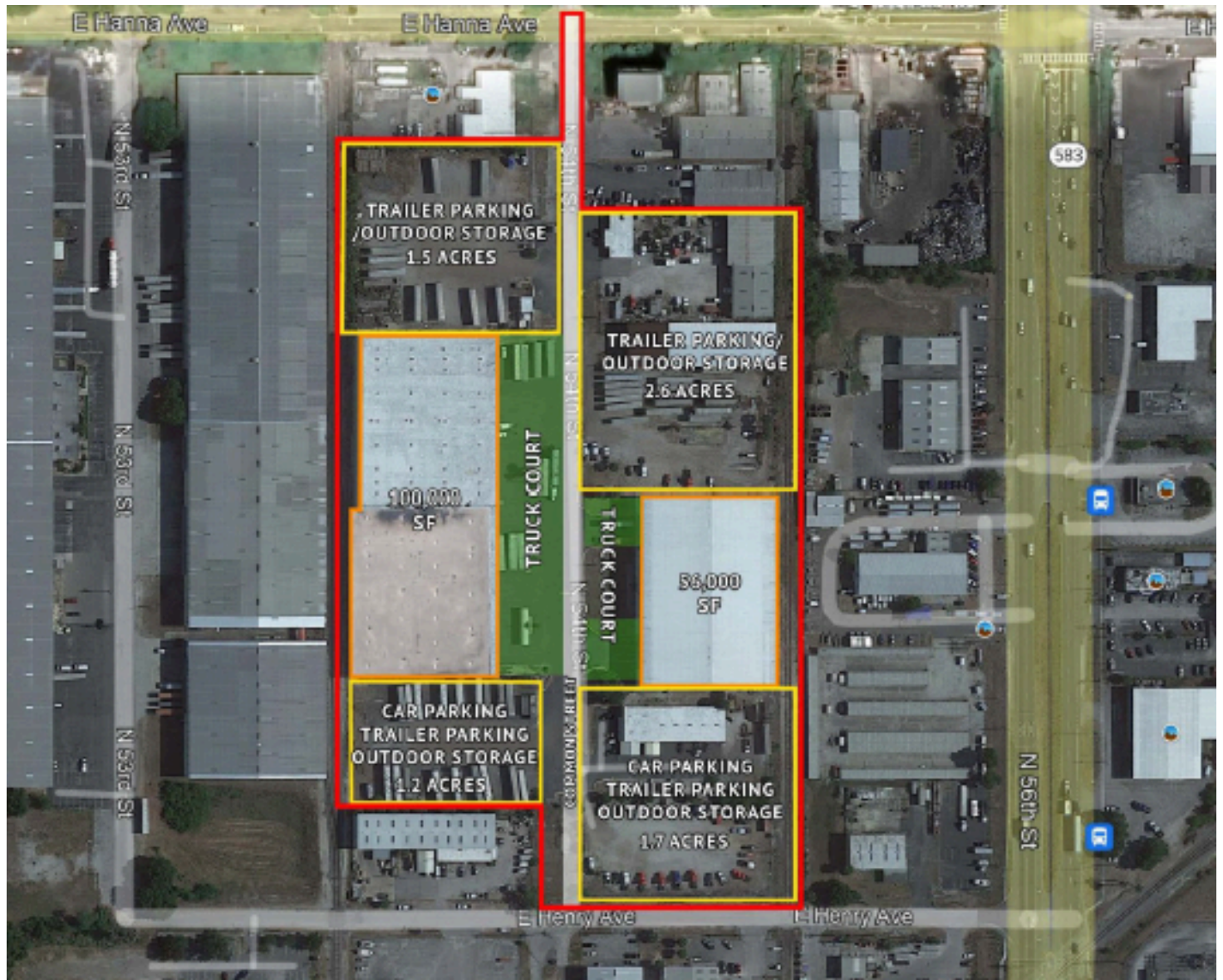
- \$4.0 MM of renovations underway
- New façade
- Storefront entry
- 4.25 acres of outdoor storage, trailer parking or car parking



5803 N 54th Street

Tampa, FL

Building Size: 56,000 SF | Building Availability: 56,000 SF

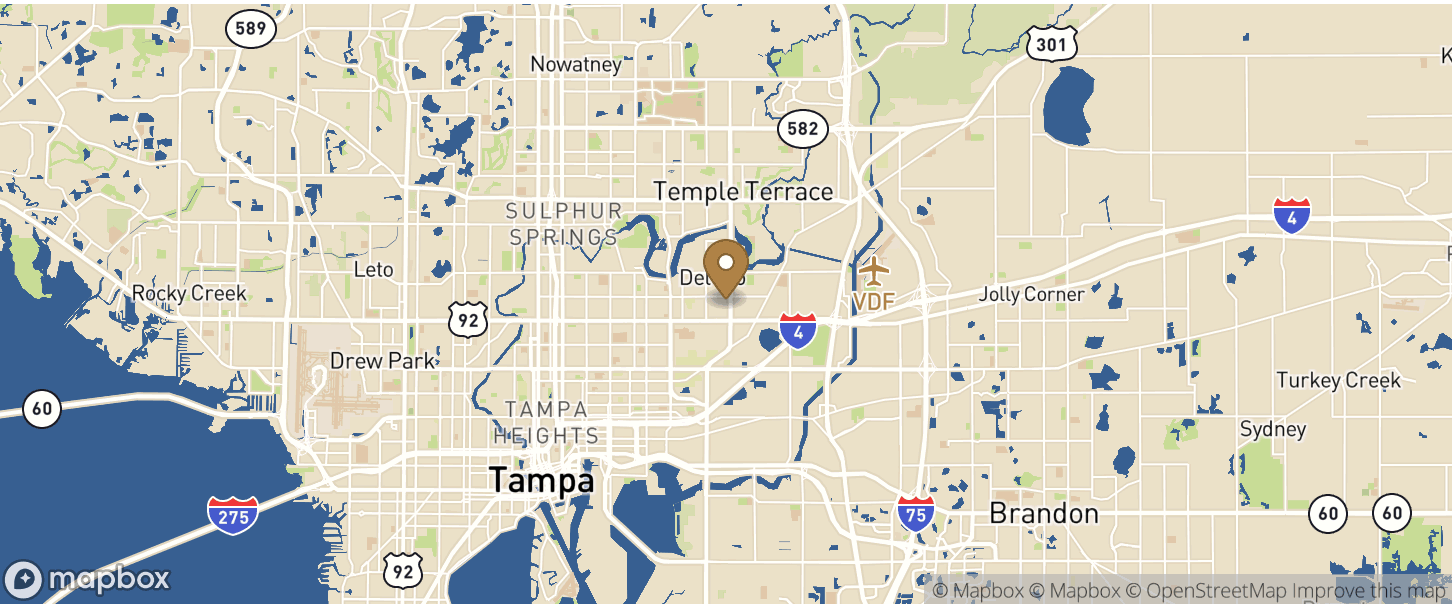


5803 N 54th Street

Tampa, FL

Building Size: 56,000 SF | Building Availability: 56,000 SF

Location



Access

CITY	POPULATION	MILES	DRIVE TIME
Tampa	384,959	7	0 h 16 m
St. Petersburg	258,308	30	0 h 39 m
Orlando	307,573	79	1 h 44 m
Jacksonville	949,611	199	3 h 26 m
Miami	442,241	281	4 h 26 m
Atlanta	498,715	455	7 h 11 m

Population

ACCESS AND LABOR FORCE	10 MILES
Total Population	751,971
Total Labor Force	541,633
Unemployment Rate	2.47%
Median Household Income	56,058
Warehouse Employees	3,625
High School Education Or Higher	66.90%

Transportation

Transit		
Bus, 56th Street @ 5806	2 min walk	0.1 miles