



851 IRWIN STREET

NEWLY
REMODELED
OFFICES
FOR LEASE



James Kilpatrick
President
james@nainorcal.com
510.290.9647
CaIDRE #01277022

Seth Hubbert
Investment Advisor
shubbert@nainorcal.com
510.757.9929
CaIDRE #02158135

Jonathan Altamirano
Investment Advisor
jaltamirano@nainorcal.com
805.723.4771
CaIDRE #02238115



THE BUILDING

851 Irwin Street is a spacious three-story building spanning over 27K square feet, exterior decks, lobby, elevators, and natural light in each unit create an ideal space for small businesses. Conveniently located near Marin SMART Train, restaurants, grocery stores, and shops.

HIGHLIGHTS

- Ample On-Site Parking
- Shared Kitchen and Conference Rooms
- Building-wide WiFi
- 1 Minute walk to Whole Foods, Shops, & Restaurants
- 1 Minute walk to SMART Train and Marin Bus Depot
- Easy Freeway Access
- Responsive On-Site Management
- Short Term & Flexible Leases
- On-Site Showing & Tour Contact
- Commission Fees available for Tenant Reps





851

IRWIN STREET

2ND FLOOR
130 SF - 6,580 SF



■ AVAILABLE UNITS

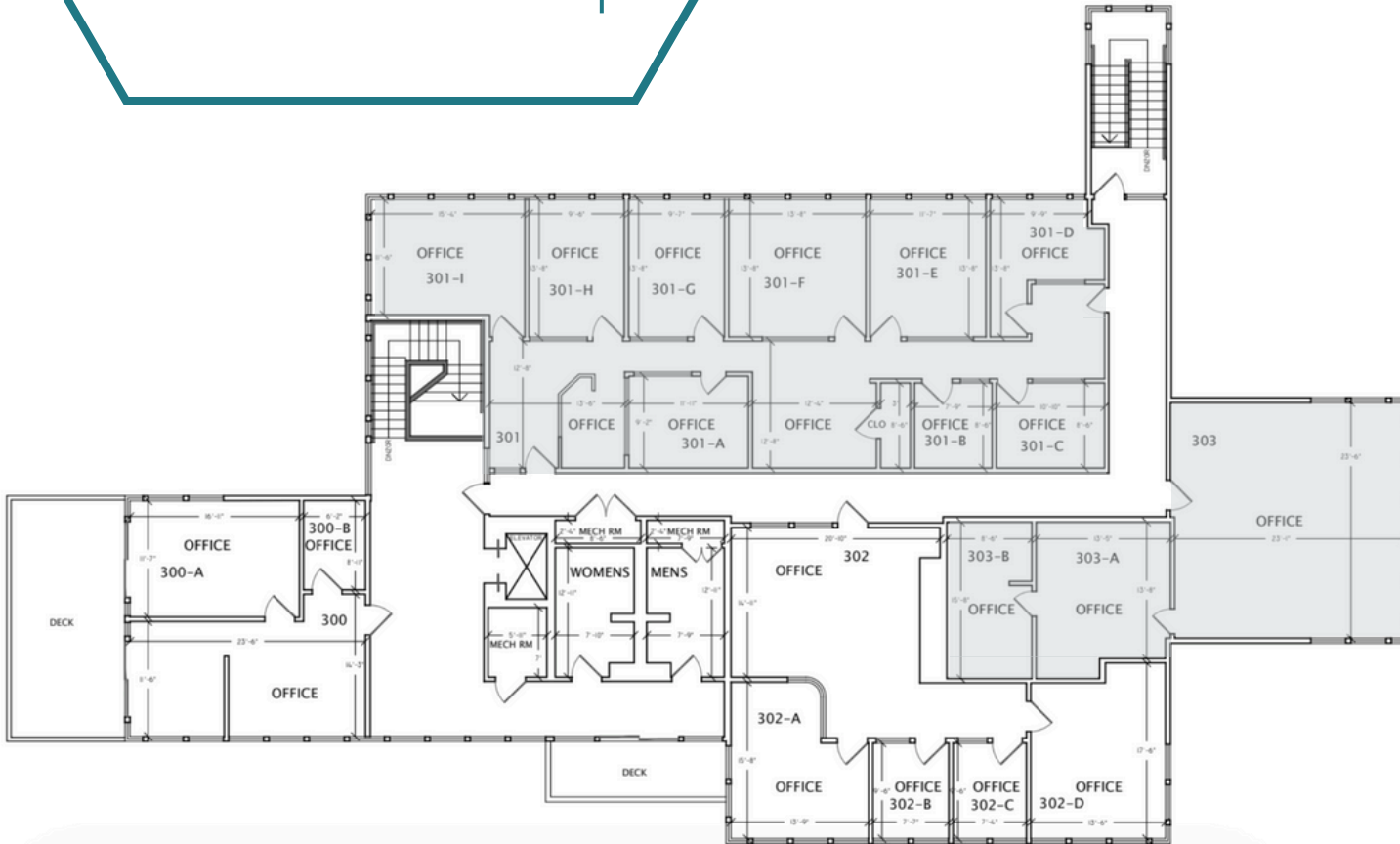
SUITE	RENTABLE SF	RENT (SF/MO)
225A	200	\$1.35 MG
225C	251	\$1.25 MG
225E	225	\$1.25 MG
225F	210	\$1.25 MG
226B	245	\$1.49 MG
226C	270	\$1.49 MG
226D	245	\$1.49 MG
226G1	167	\$1.49 MG
226G2	326	\$1.25 MG
2nd Floor Total	+/- 2,139	

851

IRWIN STREET

3RD FLOOR

130 SF - 4,400 SF



 AVAILABLE UNITS

SUITE	RENTABLE SF	RENT (SF/MO)
301	1,157	\$0.89 MG
303	1,277	\$0.89 MG
304	1,310	\$0.89 MG
3rd Floor Total	+/- 3,744	





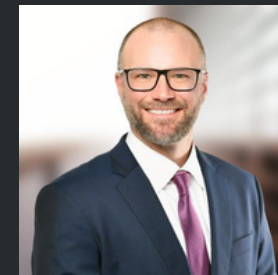
851

IRWIN STREET

FOR LEASING INFORMATION



JAMES KILPATRICK
james@nainorcal.com
510.290.9647
LIC# 01277022



SETH HUBBERT
shubbert@nainorcal.com
510.757.9929
CaIDRE #02158135



JONATHAN ALTAMIRANO
jaltamirano@nainorcal.com
805.723.4771
CaIDRE #02238115