



PROPERTY DESCRIPTION

Perfect opportunity to get into the Downtown Newark scene! Prime retail space available in the heart of the University of Delaware campus, which is home to nearly 20,000 students.

Prime location at the intersection of East Main Street and North Chapel Street and within walking distance from anything the City of Newark has to offer.

PROPERTY HIGHLIGHTS

- Available: 1,042 SF
- Lease Rate: Please contact leasing agent
- Two restrooms
- Excellent Visibility
- Readily accessible to pedestrian traffic along Main Street
- Well-maintained building with great curb appeal
- Off-street parking available

DEMOGRAPHICS (ESRI 2019)

	1 MILE	3 MILES	5 MILES
Population	18,164	65,009	147,383
Daytime Population	19,583	65,459	148,806
Households	4,116	22,397	54,211
Average Household Income	\$59,995	\$82,441	\$89,710
Median Age	22.3	30.4	34.8



Front of Building



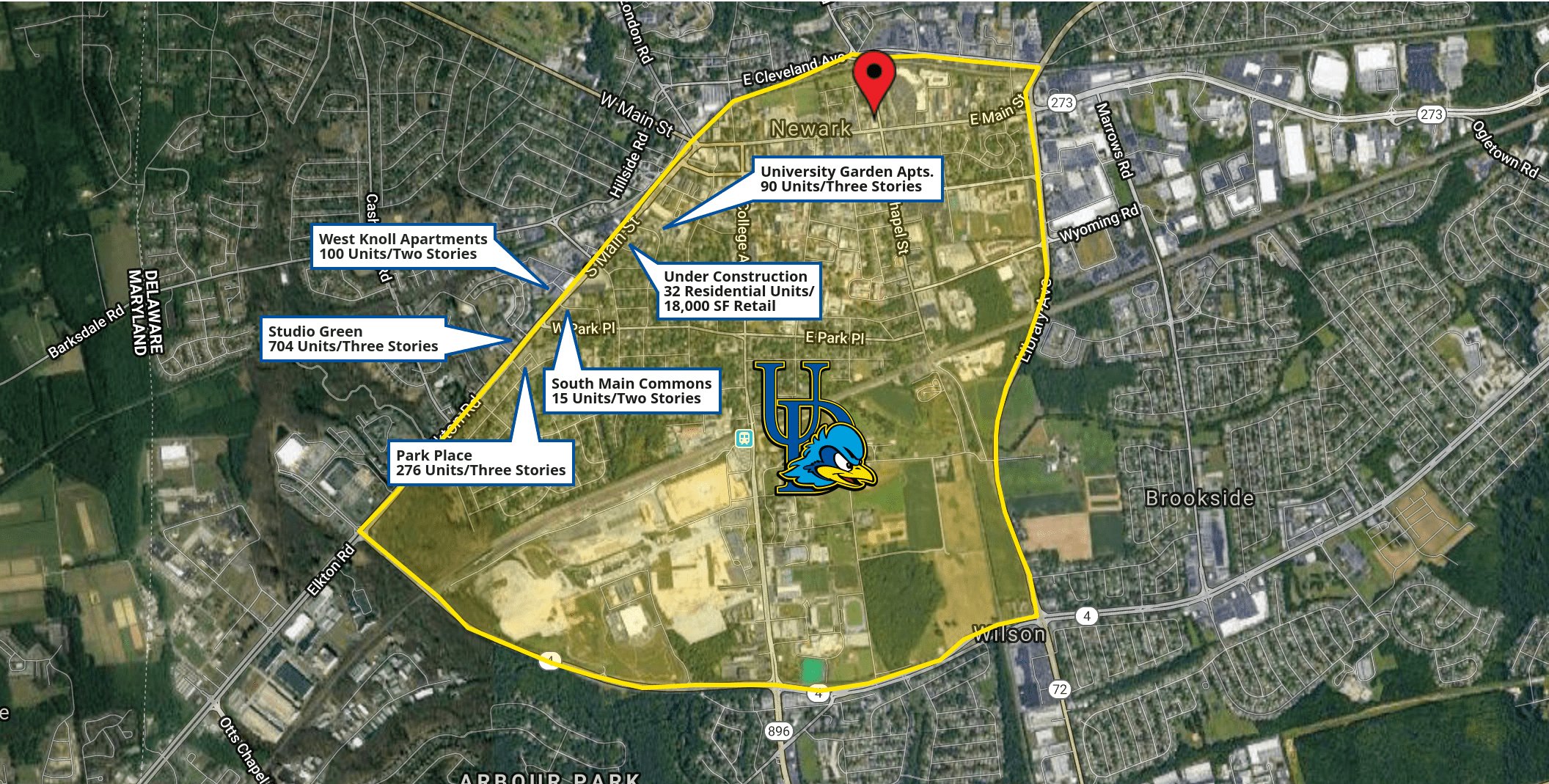
Back of Building

For More Information, Contact:

Dan Wham
dwham@dsmre.com
302.283.1800 Office
302.249.9744 Cell

Griffin Conaty
gconaty@dsmre.com
302.283.1800 Office
302.545.2061 Cell

DSM Commercial
Real Estate Services
3304 Old Capitol Trail
Wilmington, DE 19808
dsmre.com



Google Map data ©2019 Imagery ©2019, Landsat / Copernicus, Maxar Technologies, PA Department of Conservation and Natural Resources-PAMAP/USGS, U.S. Geological Survey, USDA Farm Service Agency

For More Information, Contact:

Dan Wham
dwham@dsmre.com
302.283.1800 Office
302.249.9744 Cell

Griffin Conaty
gconaty@dsmre.com
302.283.1800 Office
302.545.2061 Cell

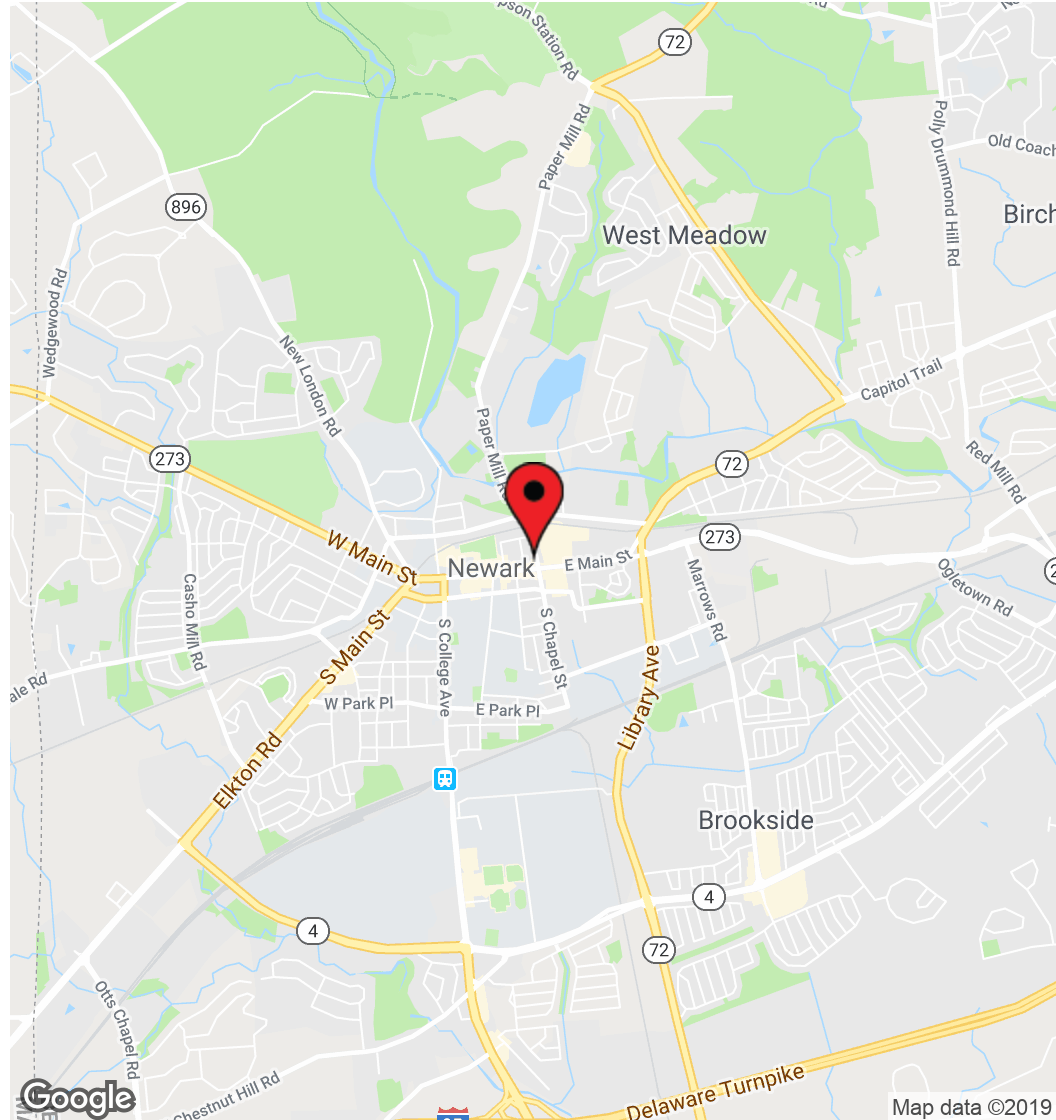
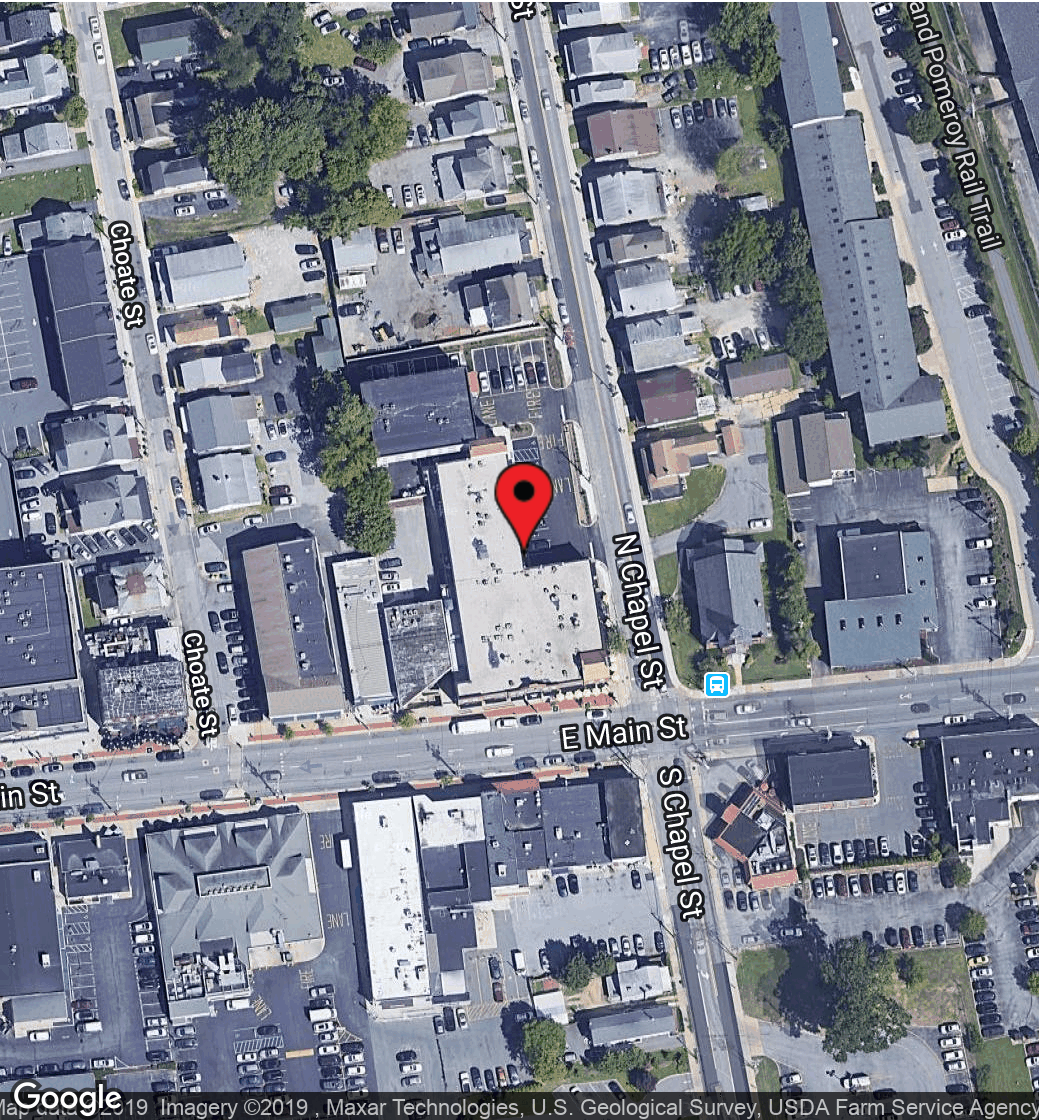
DSM Commercial
Real Estate Services
3304 Old Capitol Trail
Wilmington, DE 19808
dsmre.com



ASTRA PLAZA RETAIL

15 North Chapel Street
Newark, DE 19711

RETAIL PROPERTY FOR LEASE



For More Information, Contact:

Dan Wham
dwham@dsmre.com
302.283.1800 Office
302.249.9744 Cell

Griffin Conaty
gconaty@dsmre.com
302.283.1800 Office
302.545.2061 Cell

DSM Commercial
Real Estate Services
3304 Old Capitol Trail
Wilmington, DE 19808
dsmre.com