

# Barta Bailey

201 NW 10TH ST - PACKARD BUILDING  
RESTAURANT FOR LEASE



## Description

Located at a prominent intersection in Midtown, this beautiful 2nd generation restaurant suite features a thoughtfully-designed kitchen and bar area plus catering kitchen. Includes two sets of vent hoods (1 in each kitchen) and three walk in coolers (1 in each kitchen plus a bar walk-in with pass through under cabinet coolers in the bar area). Lease includes the 3,300 SF rooftop at no additional charge. Customer parking is conveniently available in the surface lot adjacent to the suite.

## Highlights

- Large, Functional Kitchen
- 3,300 SF Rooftop Patio
- Highly Visible Location in Downtown OKC
- Expansive Windows
- Easy customer parking on the streetcar route

## Summary

Lease Rate:	\$24.00 SF/yr (NNN)
Available SF:	4,614 SF
Building Size:	37,614 SF

# Barta Bailey

201 NW 10TH ST - PACKARD BUILDING  
RESTAURANT FOR LEASE



---

ALLISON BAILEY

405.620.3883

ALLISON@BARTABAILEY.COM

BARTABAILEY.COM

---

# Barta Bailey

201 NW 10TH ST - PACKARD BUILDING  
RESTAURANT FOR LEASE



ALLISON BAILEY

405.620.3883

ALLISON@BARTABAILEY.COM

BARTABAILEY.COM

# Barta Bailey

201 NW 10TH ST - PACKARD BUILDING  
ROOFTOP PATIO PHOTOS



ALLISON BAILEY

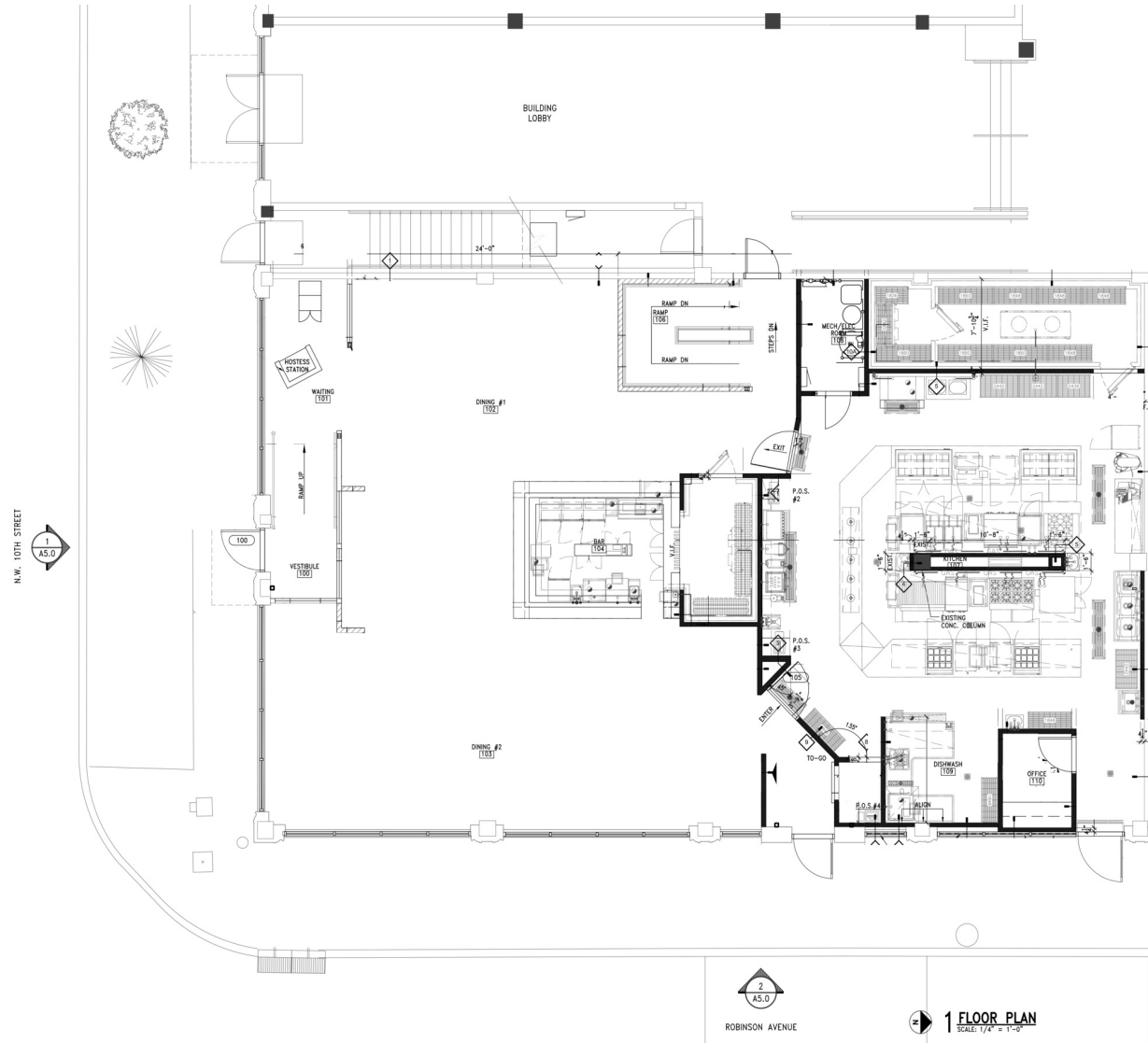
405.620.3883

ALLISON@BARTABAILEY.COM

BARTABAILEY.COM

# Barta Bailey

201 NW 10TH ST - PACKARD BUILDING  
FLOOR PLAN



# Barta Bailey

201 NW 10TH ST - PACKARD BUILDING  
RESTAURANT FOR LEASE

