



8,151 RSF
SUBLEASE AVAILABLE



ONE LINCOLN PARK

SUITE 302

8401 North Central Expressway
Dallas, TX



SUBLEASE HIGHLIGHTS

- \$32.00 NNN
- Available Immediately with a Flexible Term
- Plug & Play with FF&E available
- High-End, Corgan designed office with brand new furniture
- Space features include:



RECEPTION



LARGE
CONFERENCE
ROOM



SMALL
CONFERENCE
ROOM



BREAKROOM



16
WORKSTATIONS



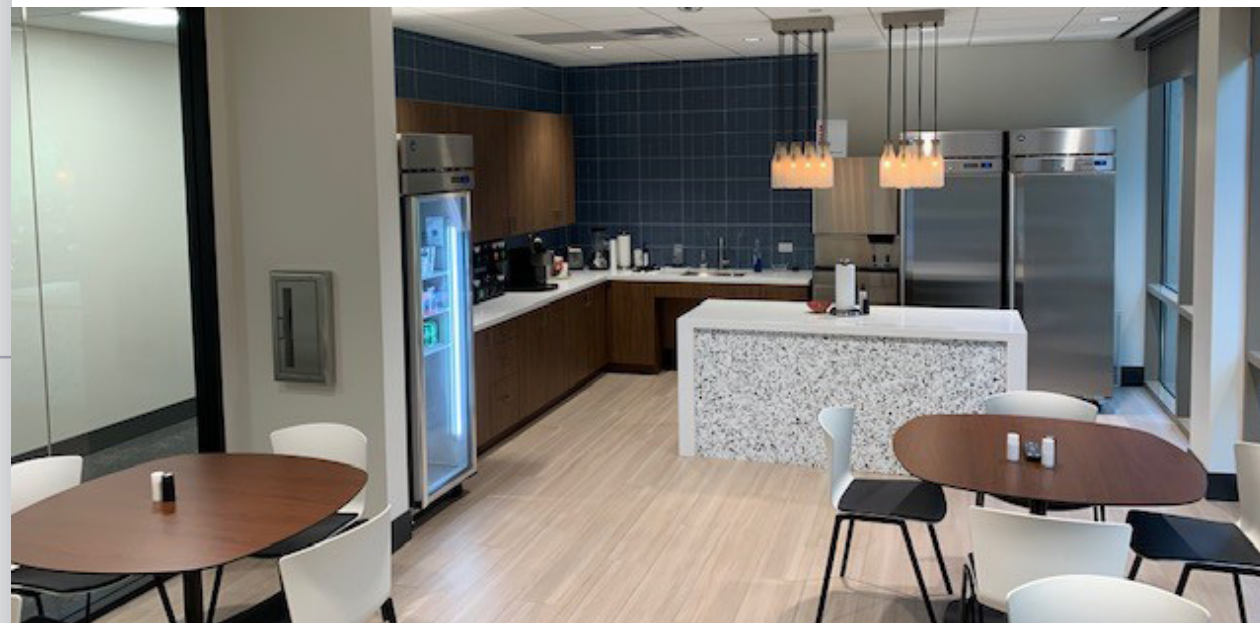
18
OFFICES



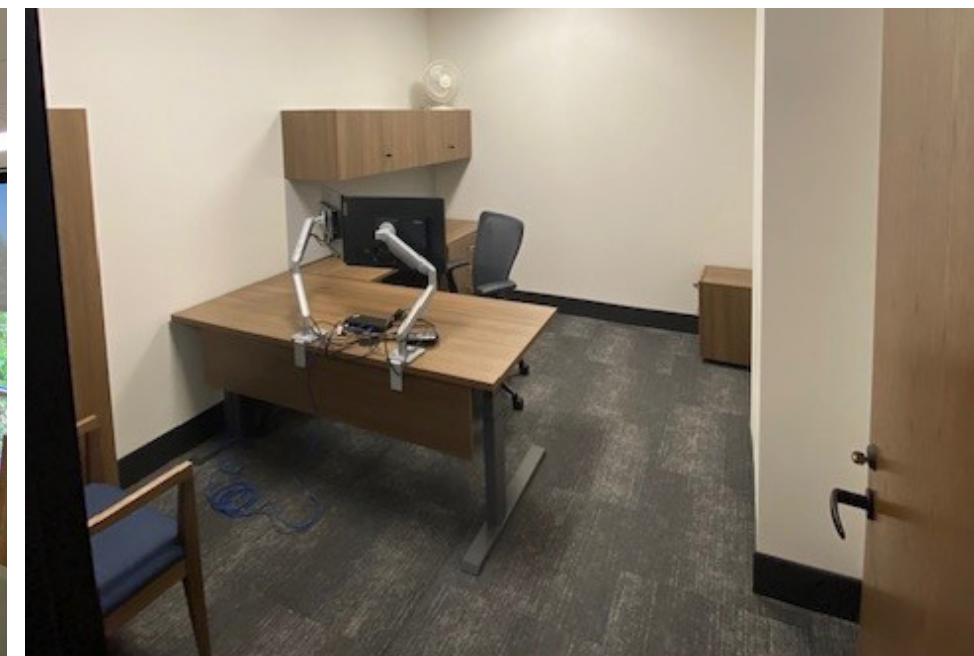
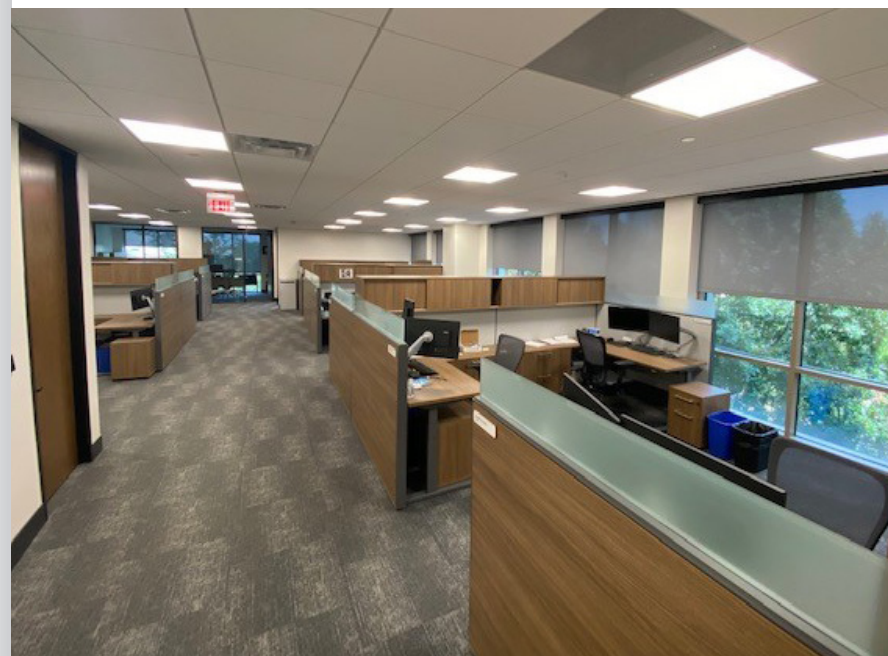
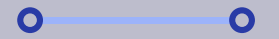
IT/SERVER
ROOM



STORAGE
ROOM



**NEWLY BUILT-
OUT SPACE
WITH ALL NEW
FURNITURE**



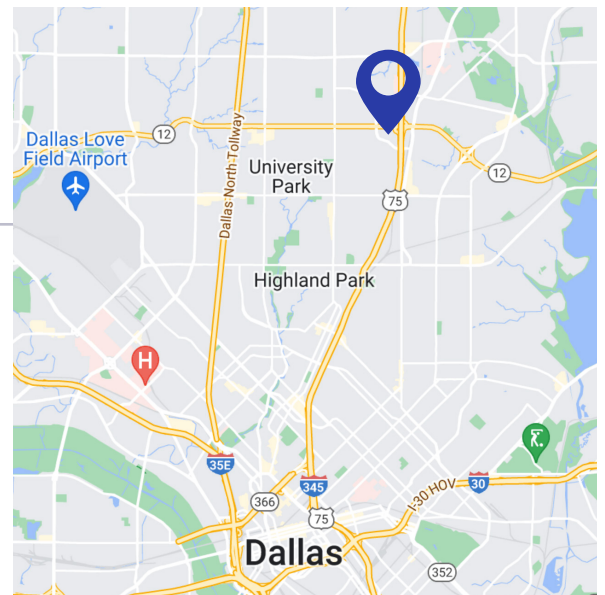
FLOORPLAN

SUITE 302
8,151 RSF



LOCATION

One Lincoln Park is located at the southwest corner of Northwest Highway and Central Expressway, giving it great easy of access and location in Dallas. Adjacent to many surrounding amenities including Preston Hollow Village and The Shops at Park Lane.



Craig Wilson
craig.wilson@streamrealty.com
214.923.9797

Nate Hruby
nate.hruby@streamrealty.com
214.267.0440

Sam Bass
sam.bass@streamrealty.com
214.901.4369