

OFFICE BUILDING FOR LEASE



# RIVERHILL TOWER

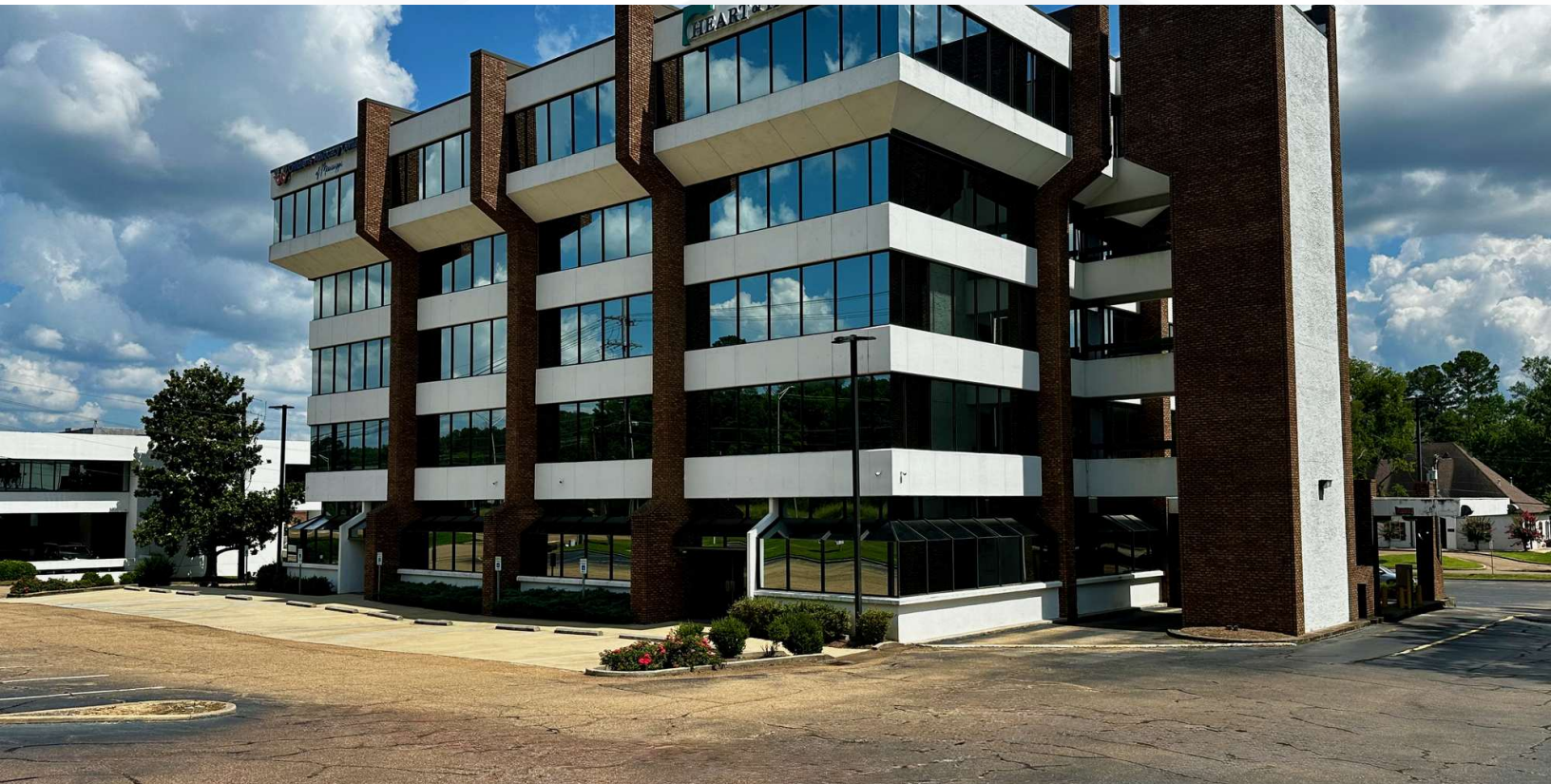
1675 LAKELAND DRIVE, JACKSON, MS 39216

**Scott Overby, CCIM CPM**  
Principal Broker | Overby, Inc.  
601.366.8600 x3301  
scott@overby.net

**Amanda Principe Overby**  
Vice President, Broker Associate  
601.366.8600  
amanda@overby.net







### PROPERTY DESCRIPTION

Prime office and retail opportunities in one of Jackson's most visible locations! Located at the highly traveled intersection of Lakeland Drive and Ridgewood Road with immediate access to Interstate 55, Riverhill Tower combines convenience, visibility, and flexibility.

In addition to professional office suites, the property features a ground-level former bank branch with existing drive-through lanes, making it a rare turnkey option for financial institutions, service providers, or retail operators seeking maximum exposure and customer convenience.

Recent renovations include refreshed common areas and ADA restrooms with high-end finishes, plus major infrastructure upgrades such as a new cooling tower, enhanced energy management systems, LED lighting, and modern access controls. Full-service leases include utilities and five-day janitorial service.

### OFFERING SUMMARY

<b>Lease Rate:</b>	\$20.00 - 24.00 SF/yr (Full Service)
<b>Available SF:</b>	801 - 3,153 SF
<b>Lot Size:</b>	1.7 Acres
<b>Building Size:</b>	38,247 SF
<b>Stories/Floors:</b>	5
<b>Year Built:</b>	1977
<b>Year Renovated:</b>	2024
<b>Parking Spaces:</b>	138
<b>Parking Ratio:</b>	3.29
<b>Zoning:</b>	C-2 Limited Commercial
<b>Traffic Count:</b>	40,000+ ADT
<b>Market</b>	Jackson, MS

DEMOGRAPHICS	1 MILE	5 MILES	10 MILES
<b>Total Households</b>	809	45,429	118,905
<b>Total Population</b>	1,808	115,695	317,394
<b>Average HH Income</b>	\$163,922	\$58,840	\$61,477

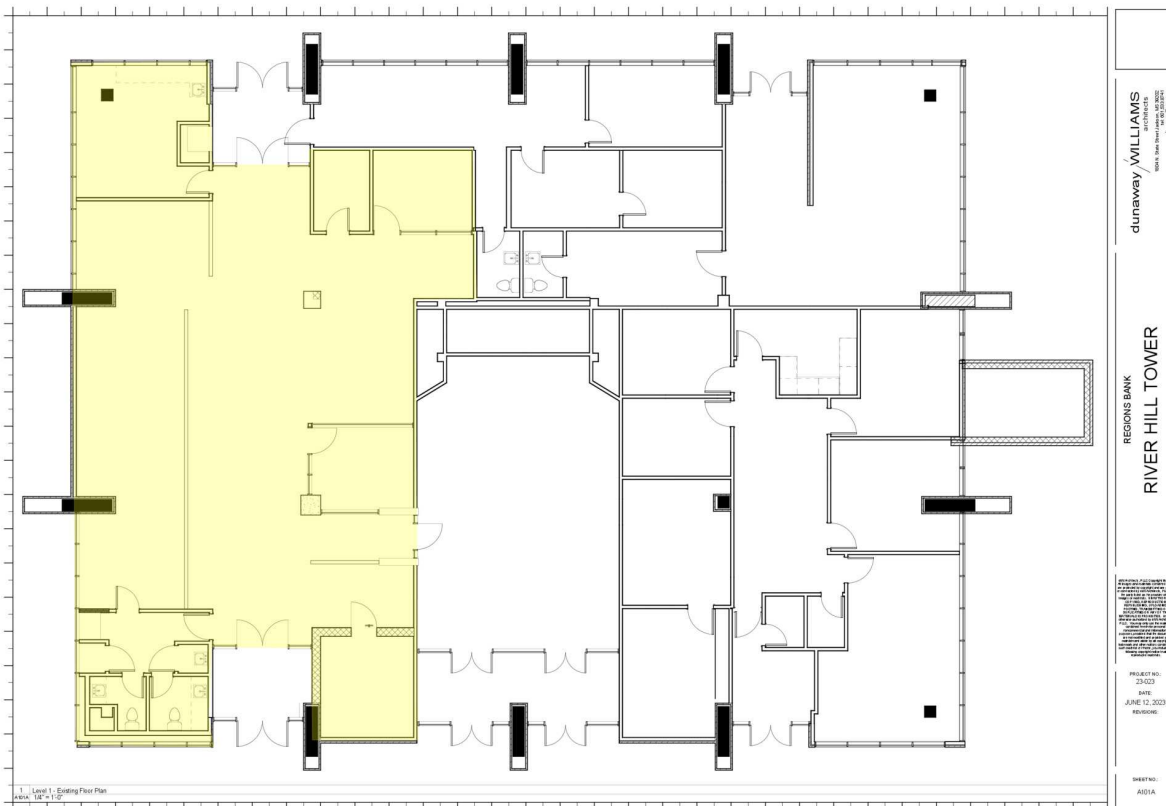
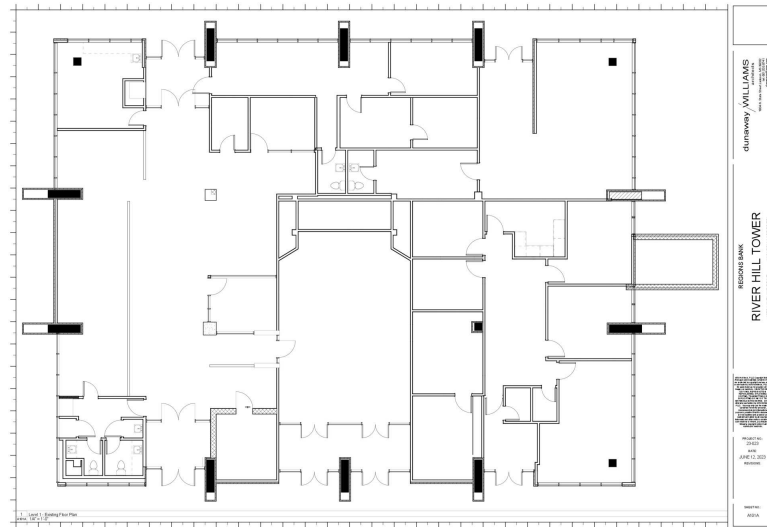
**Scott Overby, CCIM CPM**  
Principal Broker | Overby, Inc.  
601.366.8600 x3301  
scott@overby.net

**Amanda Principe Overby**  
Vice President, Broker Associate  
601.366.8600  
amanda@overby.net



# FOR LEASE RIVERHILL TOWER

ADDITIONAL PHOTOS



**Scott Overby, CCIM CPM**  
Principal Broker | Overby, Inc.  
601.366.8600 x3301  
scott@overby.net

**Amanda Principe Overby**  
Vice President, Broker Associate  
601.366.8600  
amanda@overby.net



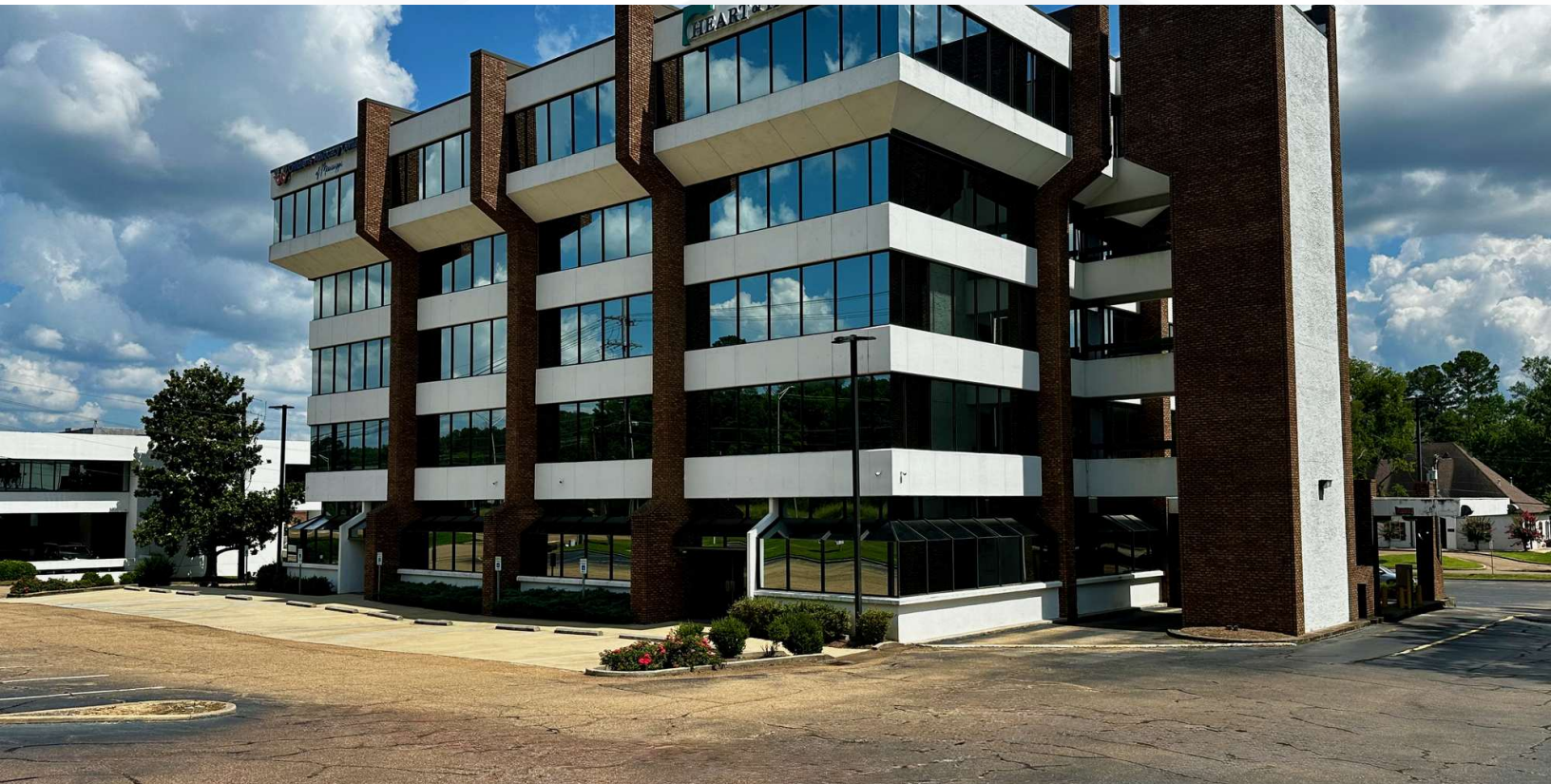
Overby Commercial • P.O. Box 4644, Jackson, MS 39296 • 601.366.8600 • [overby.net](http://overby.net)

The information contained herein has been obtained from sources deemed reliable but has not been verified and no guarantee, warranty or representation, either express or implied, is made with respect to such information. Terms of sale or lease and availability are subject to change.



# FOR LEASE RIVERHILL TOWER

LEASE SPACES



## LEASE INFORMATION

<b>Lease Type:</b>	Full Service	<b>Lease Term:</b>	60 months
<b>Total Space:</b>	801 - 3,153 SF	<b>Lease Rate:</b>	\$20.00 - \$24.00 SF/yr

## AVAILABLE SPACES

SUITE	TENANT	SIZE (SF)	LEASE TYPE	LEASE RATE	DESCRIPTION
Suite 100	Available	3,153 SF	Full Service	\$24.00 SF/yr	Suite 100 is a ground level retail/office suite that had been a former bank branch with vault and drive through
Suite 101	Available	825 SF	Full Service	\$24.00 SF/yr	Suite 101 is a ground level retail/office suite with 825 RSF

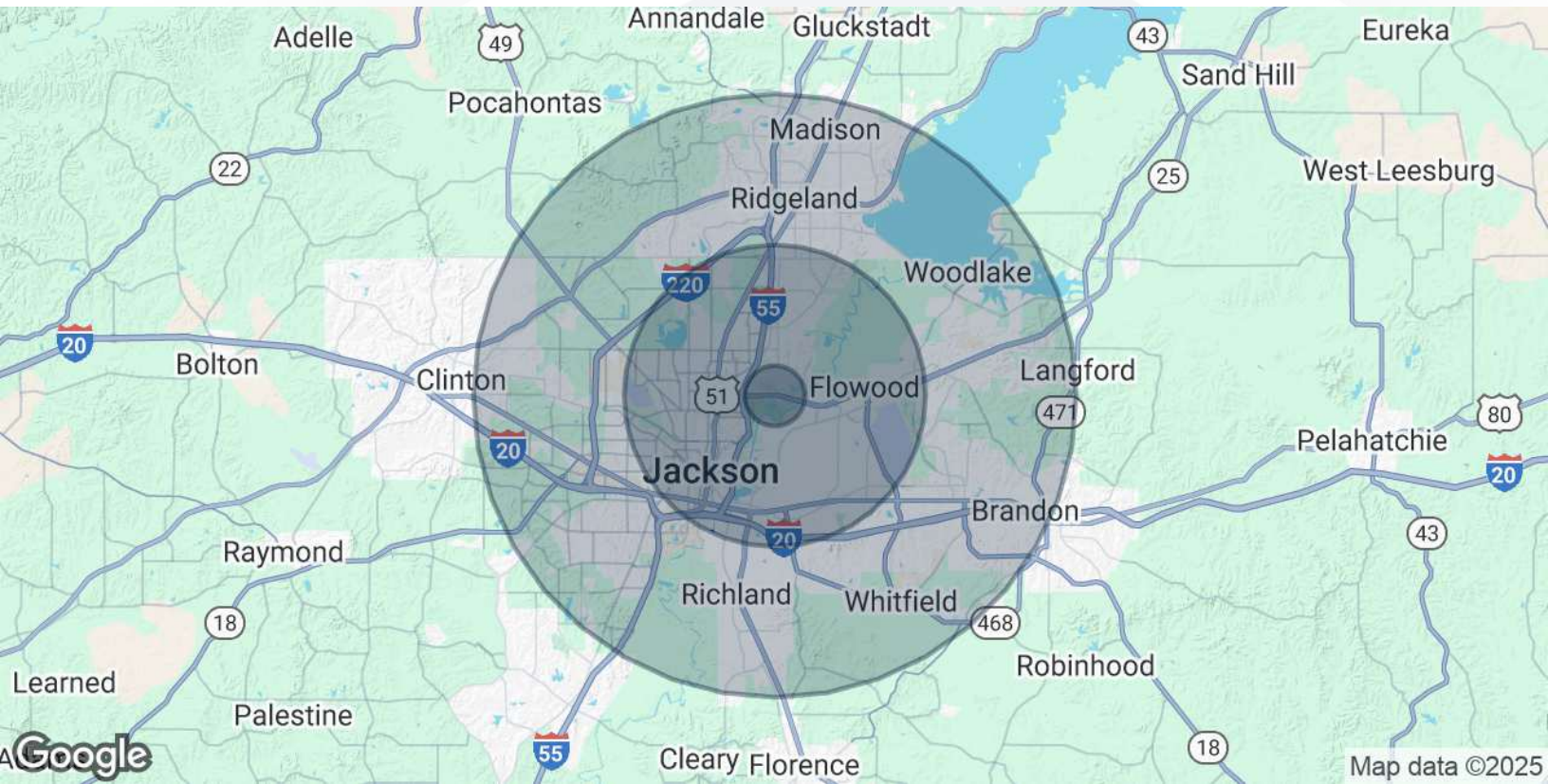
**Scott Overby, CCIM CPM**  
Principal Broker | Overby, Inc.  
601.366.8600 x3301  
scott@overby.net

**Amanda Principe Overby**  
Vice President, Broker Associate  
601.366.8600  
amanda@overby.net



# FOR LEASE RIVERHILL TOWER

## DEMOGRAPHICS MAP & REPORT



POPULATION	1 MILE	5 MILES	10 MILES
Total Population	1,808	115,695	317,394
Average Age	46.6	34.4	33.9
Average Age (Male)	43.5	34.0	32.6
Average Age (Female)	49.2	34.9	35.0
HOUSEHOLDS & INCOME	1 MILE	5 MILES	10 MILES
Total Households	809	45,429	118,905
# of Persons per HH	2.2	2.5	2.7
Average HH Income	\$163,922	\$58,840	\$61,477
Average House Value	\$456,179	\$188,628	\$166,012

2020 American Community Survey (ACS)

**Scott Overby, CCIM CPM**  
Principal Broker | Overby, Inc.  
601.366.8600 x3301  
scott@overby.net

**Amanda Principe Overby**  
Vice President, Broker Associate  
601.366.8600  
amanda@overby.net

