

POWER ROAD PLAZA
MULTI-TENANT RETAIL/OFFICE
AVAILABILITY

801-835 S POWER RD | MESA, AZ



±37,715 SF
MULTI-TENANT

±800-1,575 SF
AVAILABILITY

ZONING
LC

INTERNET
COX FIBER / CAT 6

REPRESENTED BY

Tyson Breinholt 480.966.7513 (D) 602.315.7131 (M) tbreinholt@cpiaz.com (E)

Cliff Jenkins 480.634.2332 (D) 480.888.6017 (M) cjenkins@cpiaz.com (E)

* For any leases 3+ years



COMMERCIAL PROPERTIES INC.

Locally Owned. Globally Connected. EXASAC International

POWER ROAD PLAZA // Mesa, AZ



The information contained herein has been obtained from various sources. We have no reason to doubt its accuracy; however, J & J Commercial Properties, Inc. has not verified such information and makes no guarantee, warranty or representation about such information. The prospective buyer or lessee should independently verify all dimensions, specifications, floor plans, and all information prior to the lease or purchase of the property. All offerings are subject to prior sale, lease, or withdrawal from the market without prior notice.

01 19 21



COMMERCIAL PROPERTIES INC.

Locally Owned. Globally Connected. CORFAC INTERNATIONAL

TEMPE: 2323 W University Drive, Tempe, AZ 85281 | 480.966.2301
SCOTTSDALE: 8767 E Via de Commercio, Suite 101, Scottsdale, AZ 85258 | www.cpiplaz.com

Property Description

Address	801-835 S Power Rd Mesa, AZ 85206
Building Size	±37,715 SF
Suite Sizes	±800 - 1,575 SF
Zoning	LC, City of Mesa
Frontage	Power Rd
Internet	Cox Fiber & Cat 6 Setup
Parking	5/1,000 RSF

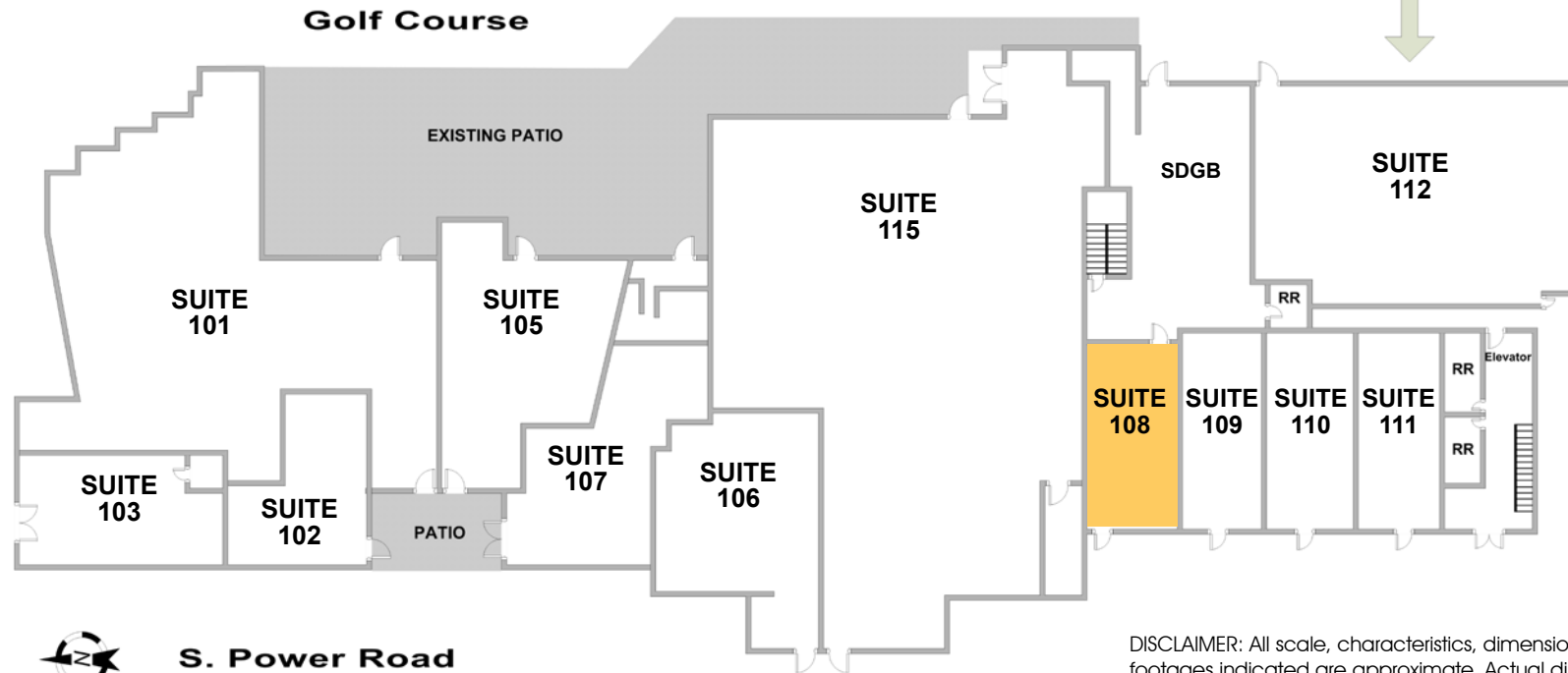
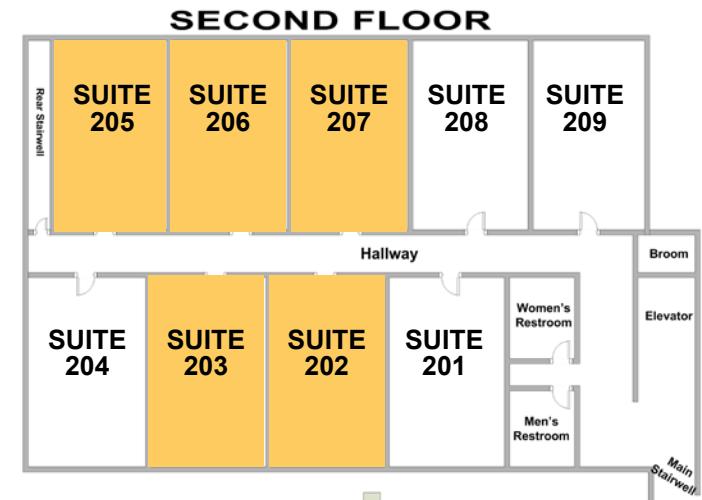
Excellent for medical services, mobility carts, chiropractic, insurance, travel agent, realtors, home care providers, dollar store, consignment, estate, auction, etc.



POWER ROAD PLAZA // Site Plan

AVAILABILITY

SUITE	SF	RATE
108	±1,000	\$14.95 MG
202	±800	\$14.95 MG
203	±800	\$14.95 MG
205	±800	\$14.95 MG
206	±800	\$14.95 MG
207	±800	\$14.95 MG

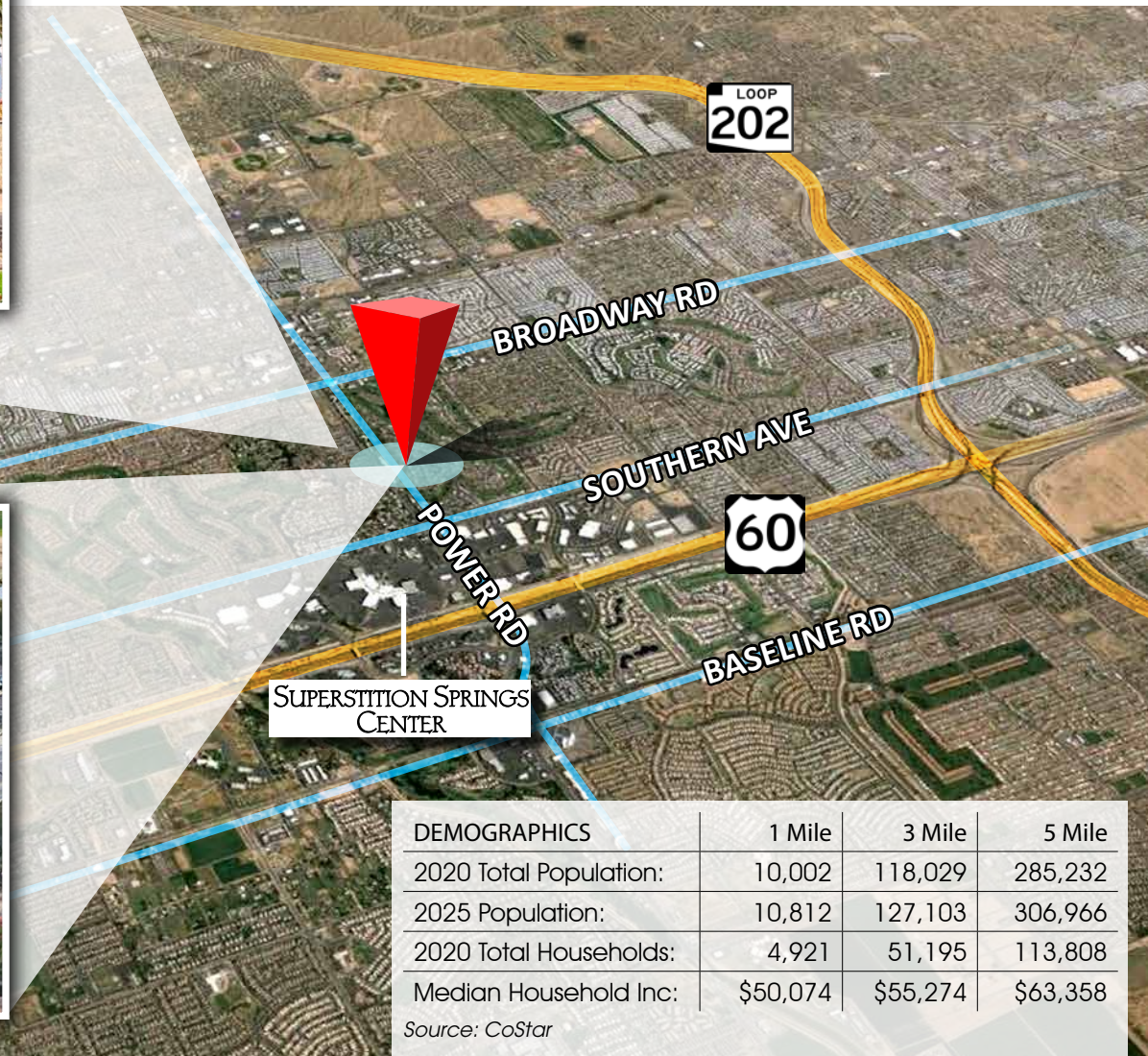


DISCLAIMER: All scale, characteristics, dimensions and square footages indicated are approximate. Actual dimensions are to be field-verified.

801-835 S POWER RD // Location



- The property is situated just north of the US 60 Freeway
- Located at the entrance of Leisure World on Power Rd
- Anchored by Van's Golf
- Blocks from Banner Baywood
- Easy ingress/egress off Power Rd at a signaled intersection



DEMOGRAPHICS	1 Mile	3 Mile	5 Mile
2020 Total Population:	10,002	118,029	285,232
2025 Population:	10,812	127,103	306,966
2020 Total Households:	4,921	51,195	113,808
Median Household Inc:	\$50,074	\$55,274	\$63,358

Source: CoStar