



OFFICE/MEDICAL SPACE FOR LEASE

600 Eagleview Boulevard

EXTON, PA

Area Available

14,225 SF on the 1st floor
± 2,580 – 8,725 SF on the 2nd floor

Property Highlights

- Conveniently located near numerous local amenities which include:
 - Restaurant Row – Featuring AI fresco dining
 - Fitness center
 - Daycare
 - Walking trails
 - Farmers market
- Building monument signage available
- Parking: 4.80/1,000 SF ratio
- Easy access to Route 113 and Pottstown Pike



For information, please contact:

Jim Dugan
Executive Managing Director
t 610-879-4513
james.dugan@nmrk.com

Jeff Mack
Executive Managing Director
t 610-755-6960
jeff.mack@nmrk.com

Sean Donnelly
Associate
t 610-755-6936
sean.donnelly@nmrk.com

1000 Continental Drive, Suite 200
King of Prussia, PA 19406



NEWMARK

Licensed in Pennsylvania as Newmark Real Estate

The information contained herein has been obtained from sources deemed reliable but has not been verified and no guarantee, warranty or representation, either express or implied, is made with respect to such information. Terms of sale or lease and availability are subject to change or withdrawal without notice.

600 Eagleview Boulevard

2,580 RSF - 14,225 SF OFFICE/MEDICAL SPACE FOR LEASE



SUITE ENTRANCE



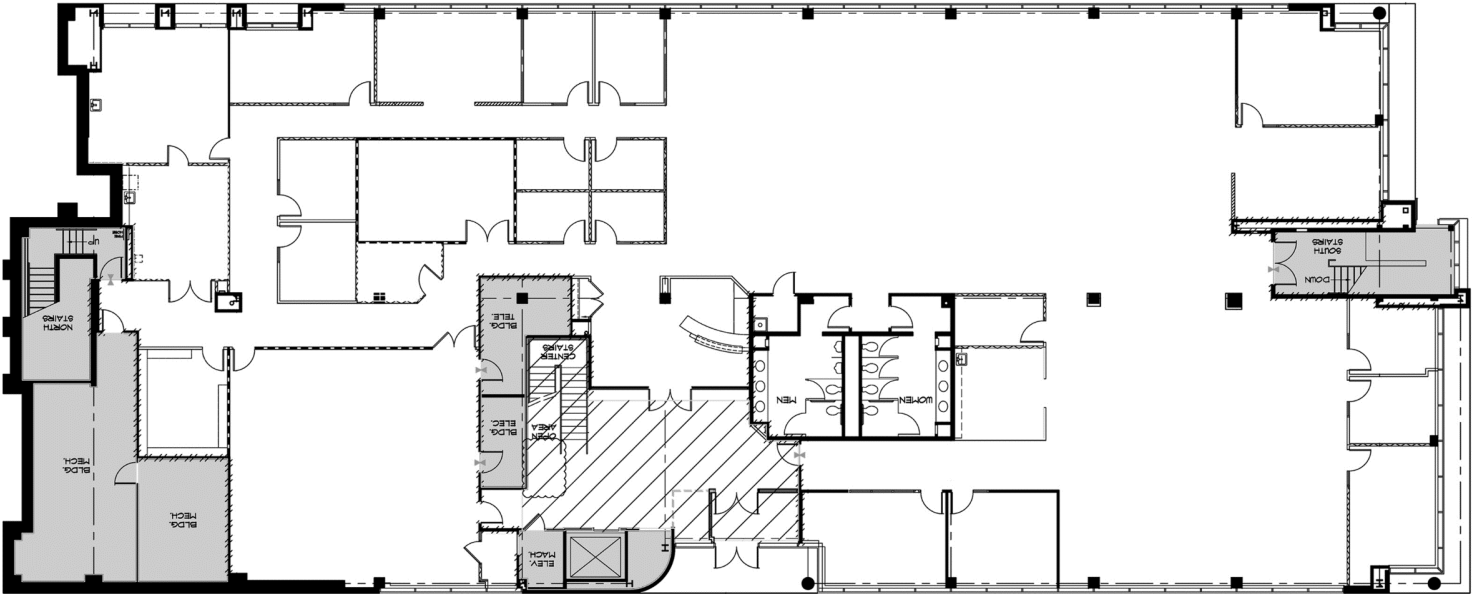
FULLY EQUIPPED BOARD ROOM



ABUNDANT NATURAL LIGHT DUE TO WINDOW LINE

600 Eagleview Boulevard

14,225 SF ON THE 1ST FLOOR



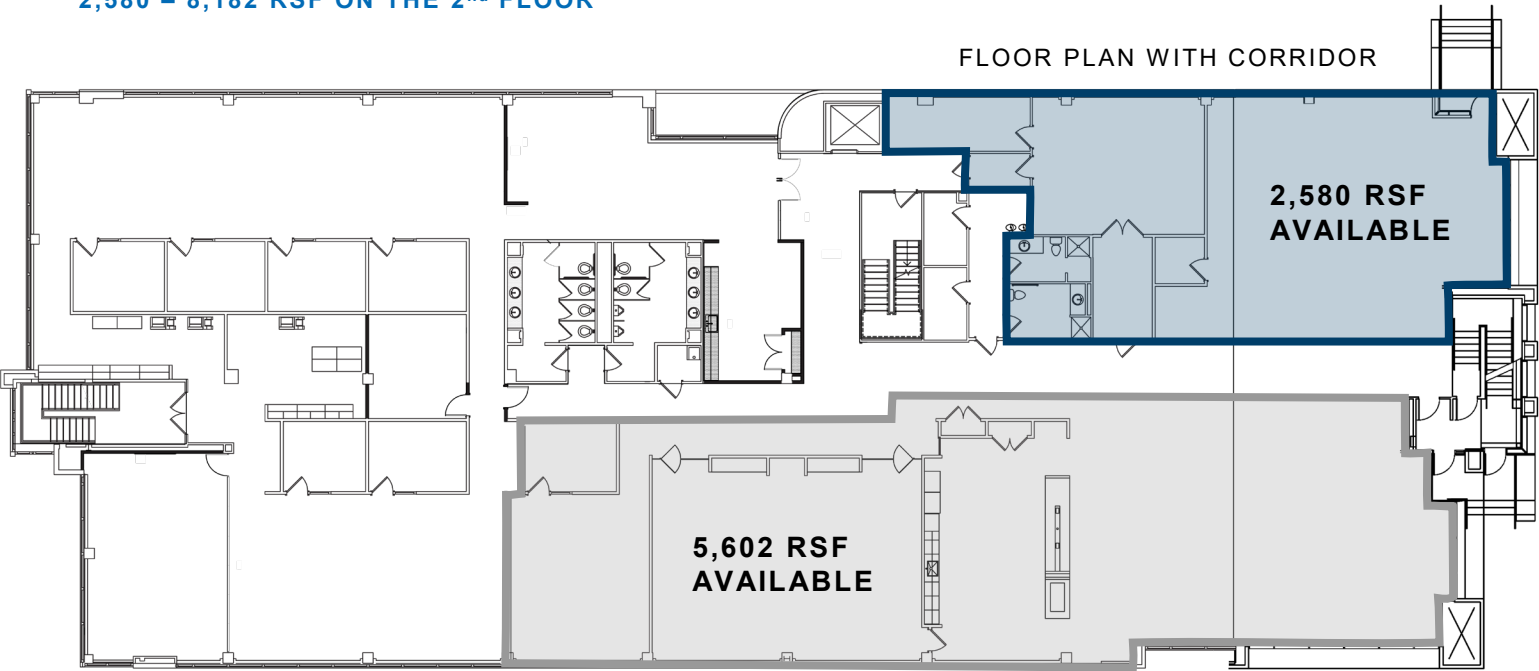
FIRST FLOOR AVAILABLE SPACE

NEWMARK

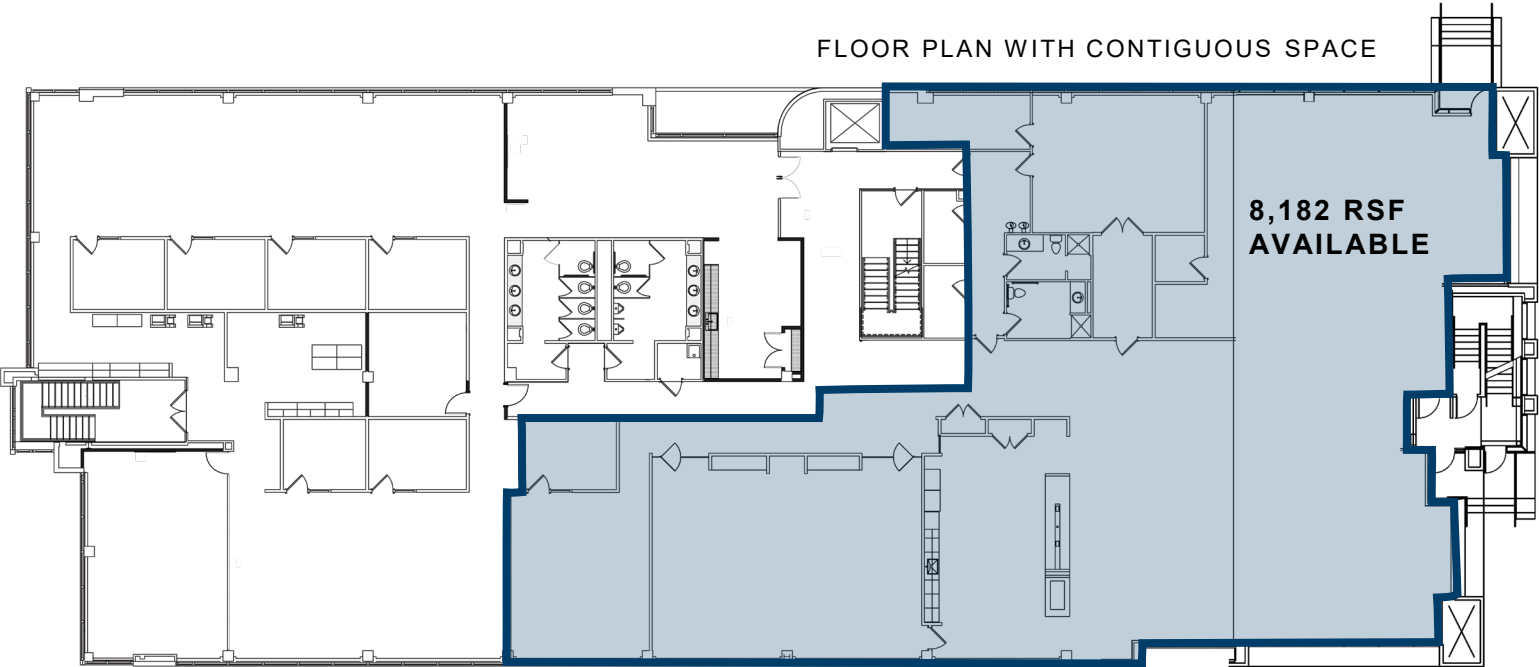
600 Eagleview Boulevard

2,580 – 8,182 RSF ON THE 2nd FLOOR

FLOOR PLAN WITH CORRIDOR

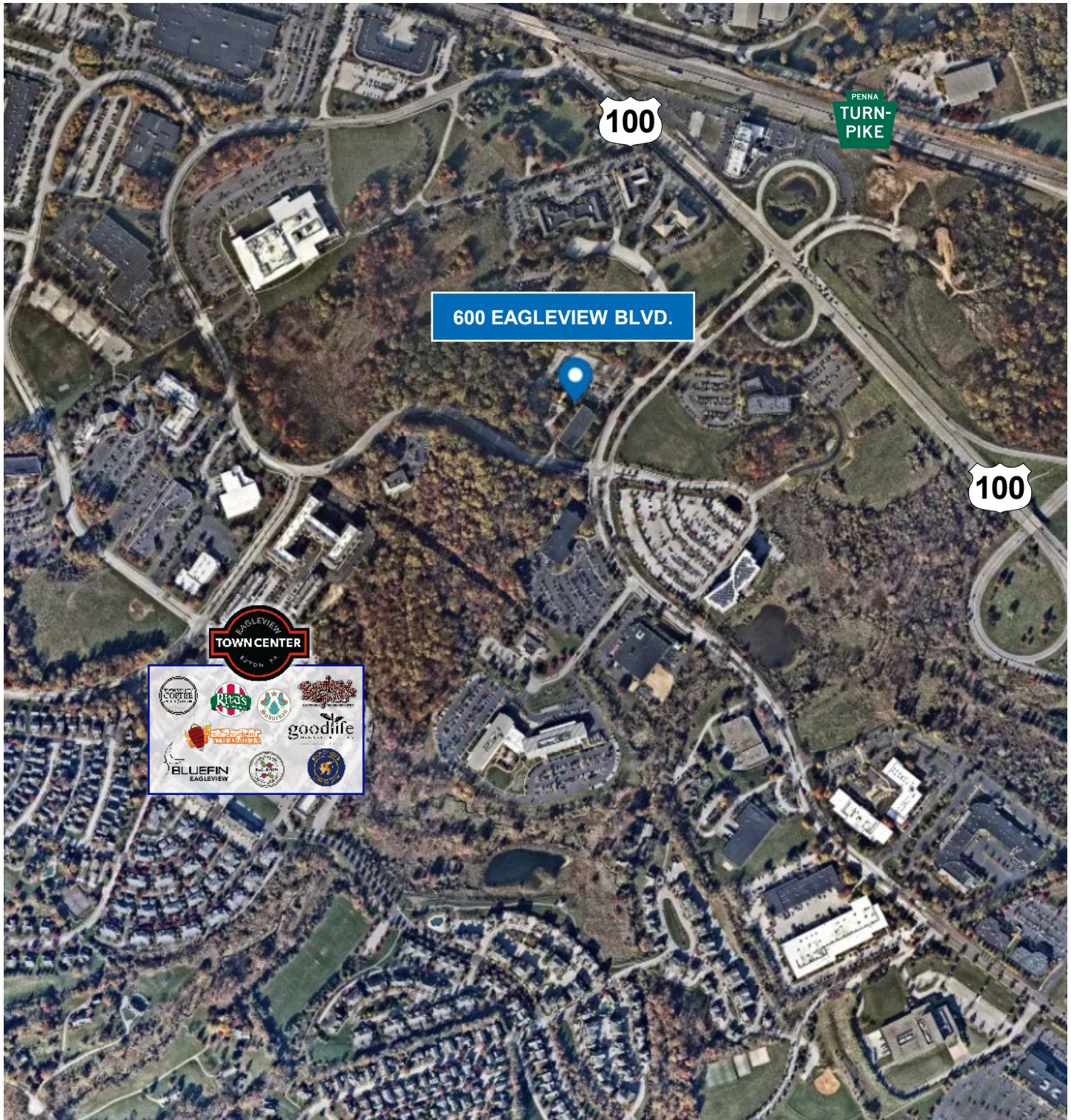


FLOOR PLAN WITH CONTIGUOUS SPACE



600 Eagleview Boulevard

2,580 RSF - 14,225 SF OFFICE/MEDICAL SPACE FOR LEASE



CLOSE PROXIMITY TO NUMEROUS AMENITIES AND ROADWAYS