

LAND
FOR SALE

REDEVELOPMENT
OPPORTUNITY

±450,410 SF
OR
±10.34 AC

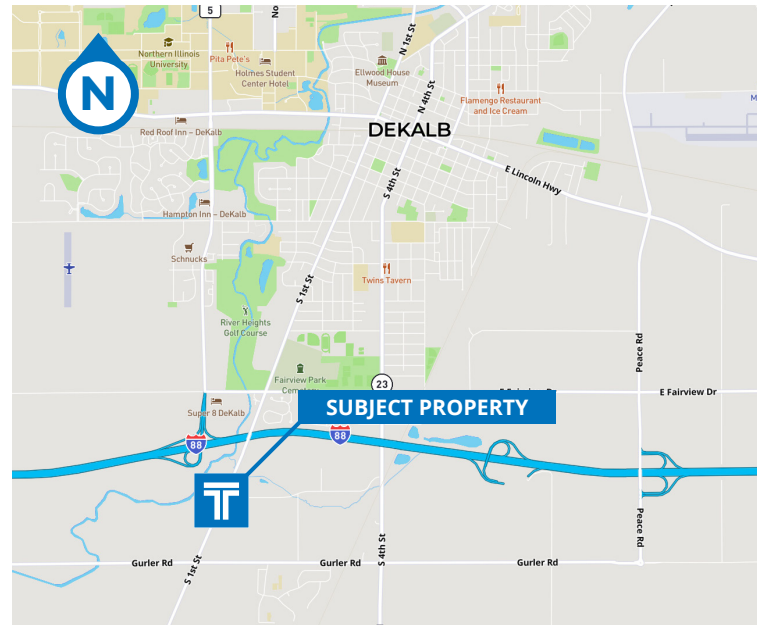
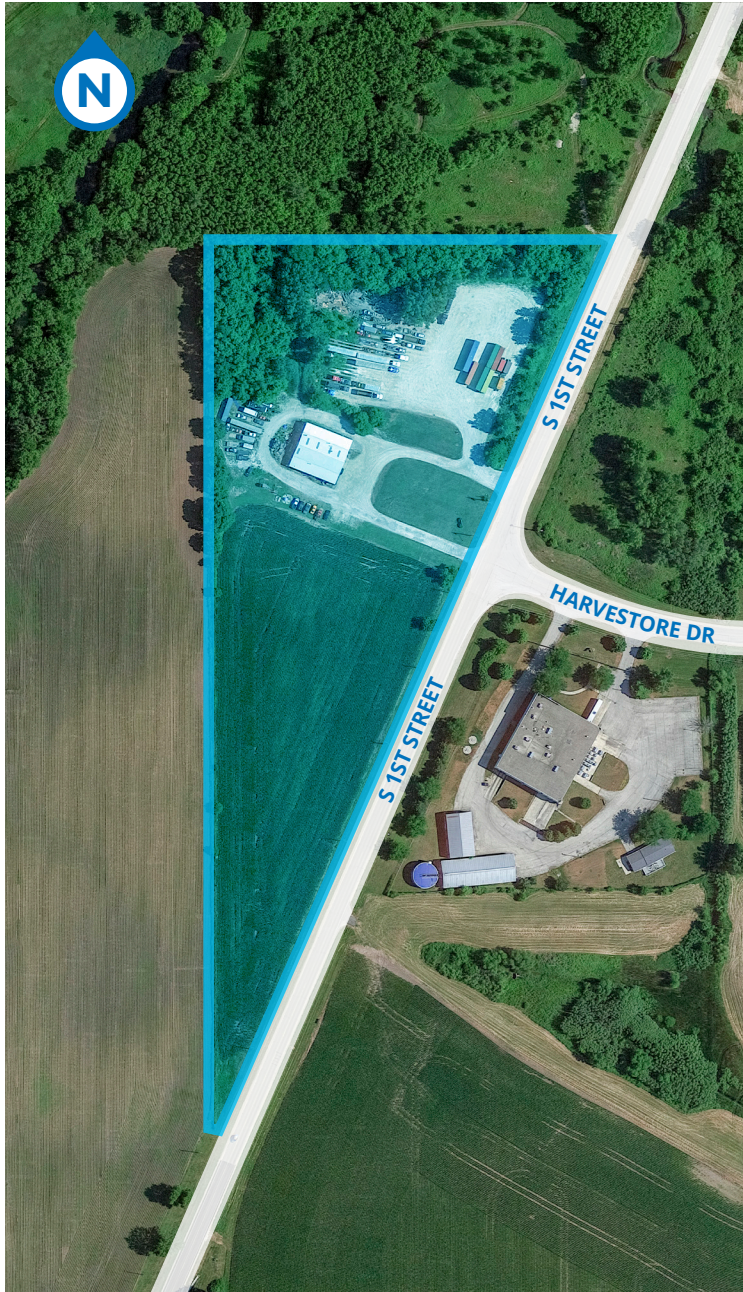
INDUSTRIAL
PROPERTY

CLOSE
PROXIMITY
TO I-88

T
TRANSWESTERN
REAL ESTATE
SERVICES

2805 S 1ST STREET

DeKalb, IL 60115



PROPERTY SPECIFICATIONS

- **LAND AREA:** ± 10.34 AC
- **BUILDING(S) SIZE:** ± 6,000 SF (Teardown, non-compliant)
- **RIVER ADJACENT - PLEASE CHECK FLOODPLAIN MAPS**
- **SALE PRICE:** SUBJECT TO OFFER

PROPERTY HIGHLIGHTS

- Business Friendly DeKalb Welcomes Annexation
- Will be Zoned Industrial and Transportation Uses Allowed
- Near new facilities for Ferrara Candy, Kraft/Heinz, Amazon, 3M and the Harvestore Industrial Park

TERRI ALEXANDER, SIOR
Executive Vice President
847-588-5641
terri.alexander@transwestern.com

The information provided herein was obtained from sources believed reliable; however, Transwestern makes no guarantees, warranties or representations as to the completeness of accuracy thereof. The presentation of this property is submitted subject to errors, omissions, change of price or conditions, prior to sale or lease, or withdrawal without notice. Copyright © 2025 Transwestern.