

Office | For Lease

CBRE

Broker Incentive: Bonus One-month gross rent commission

Campbell Square

1001 Kamokila Blvd, Suite 210, Kapolei, HI 96707



Campbell Square

1001 Kamokila Blvd, Suite 210 | Kapolei, HI 96707



Property Description

Campbell Square consists of two Class A buildings with a center courtyard. The buildings enjoy 24-hour security and are located in the heart of Oahu's second city on the corner of Kamokila Boulevard and Manawai Street. Parking for tenants and customers is free in the covered parking structure.

Features & Benefits

- + Modern turnkey office space consisting of 4 window lined offices, interior private office, large conference room, kitchenette, IT room and reception area.
- + Space has been recently updated with new laminate flooring and fresh paint.
- + Six free parking stalls
- + Restaurants & eateries located nearby
- + On-site janitorial services provided daily
- + 24/7 Security

Property Highlights

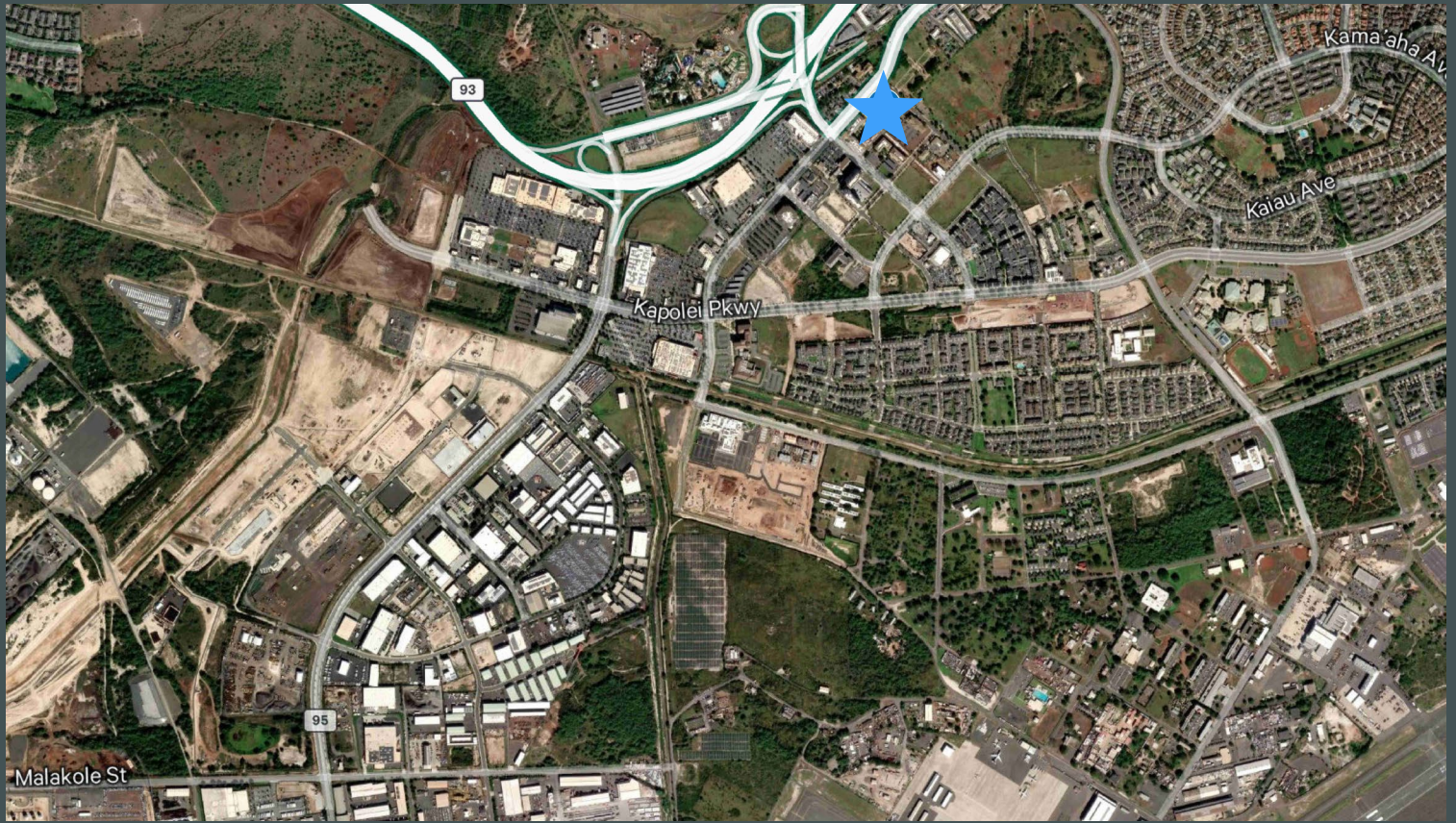
Area:	Kapolei
TMK:	(1) 9-1-88-10
Zoning:	BMX-3
Available Space:	Suite 210 (2,547 SF)
Base Rent:	\$2.00/SF/Mo.
Operating Expenses:	\$2.20/SF/Mo. (2025)
Sublease Term	Through 4/30/2028



Campbell Square

1001 Kamokila Blvd, Suite 210 | Kapolei, HI 96707

For Lease



Contact Us

Serena C. Longo (S)

Vice President

+1 808 541 5181

Serena.Longo@cbre.com

Lic. RS-74888

Austin O'Leary (S)

Associate

+1 808 541 5155

Austin.Oleary@cbre.com

Lic. RS-83544

© 2024 CBRE, Inc. All rights reserved. This information has been obtained from sources believed reliable, but has not been verified for accuracy or completeness. You should conduct a careful, independent investigation of the property and verify all information. Any reliance on this information is solely at your own risk. CBRE and the CBRE logo are service marks of CBRE, Inc. All other marks displayed on this document are the property of their respective owners, and the use of such logos does not imply any affiliation with or endorsement of CBRE. Photos herein are the property of their respective owners. Use of these images without the express written consent of the owner is prohibited.

OF_JMG_1001KamokilaBlvd_1.09.25

www.cbre.com/hawaii

CBRE