

# 112 Washington Street

South Norwalk, CT

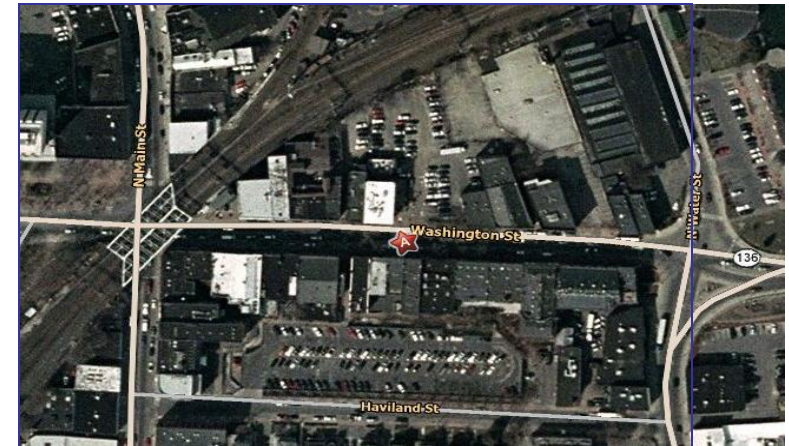


## UNIQUE OPPORTUNITY Turnkey Retail Space for Lease



Location:	South Norwalk, CT
Size:	3,600 SF (1,900 up / 1,700 down)
Price:	\$5,000. NNN
Availability:	Immediately
Comments:	A proven successful club in Southern Connecticut's Premier Restaurant and Entertainment District (Includes all Bar Equipment, Hood , Etc.)

### Map



### Contact Exclusive Agent

Brian J. Dornan, Executive Managing Director: 203-391-6803

BRIAN@PYRAMIDREGROUP.COM

### Pyramid Real Estate Group

20 Summer Street, Stamford, CT 06901

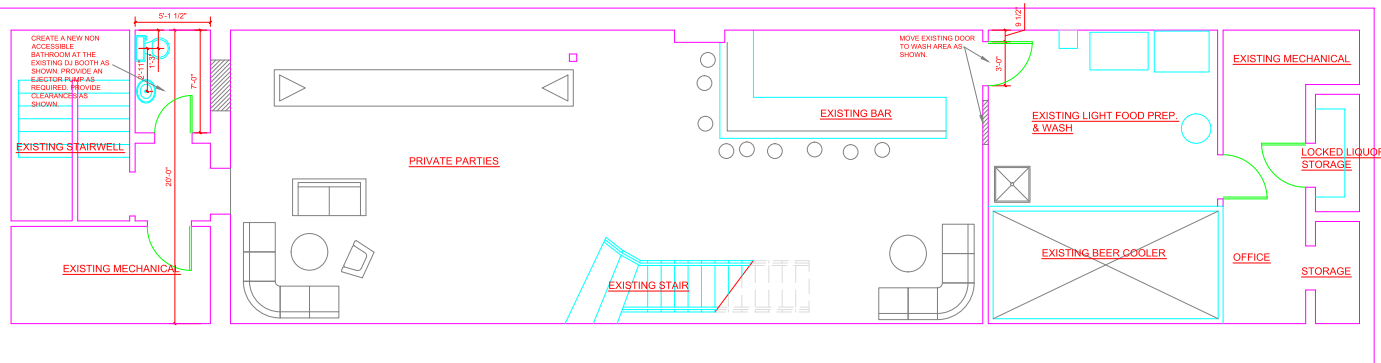
(203) 348-8566 • Fax (203) 358-9763

2002 PREM, Inc. The information above has been obtained from sources believed reliable. While we do not doubt its accuracy, we have not verified it and make no guarantee, warranty or representation about it. It is your responsibility to independently confirm its accuracy and completeness. Any projections, opinions, assumptions or estates used are for example only and do not represent the current or future performance of the property. The value of this transaction to you depends on tax and other factors which should be evaluated by your tax, financial and legal advisors. You and your advisors should conduct a careful, independent investigation of the property to determine to your satisfaction the suitability of the property for your needs.

**PYRAMID**  
Real Estate Group

Brokerage • Consulting • Management Services • Construction

[www.pyramidregroup.com](http://www.pyramidregroup.com)



**PROPOSED BASEMENT FLOOR PLAN**  
**ROOM 112**  
**112 WASHINGTON STREET**  
**NORWALK, CT**  
 SCALE 1/4" = 1'-0"

