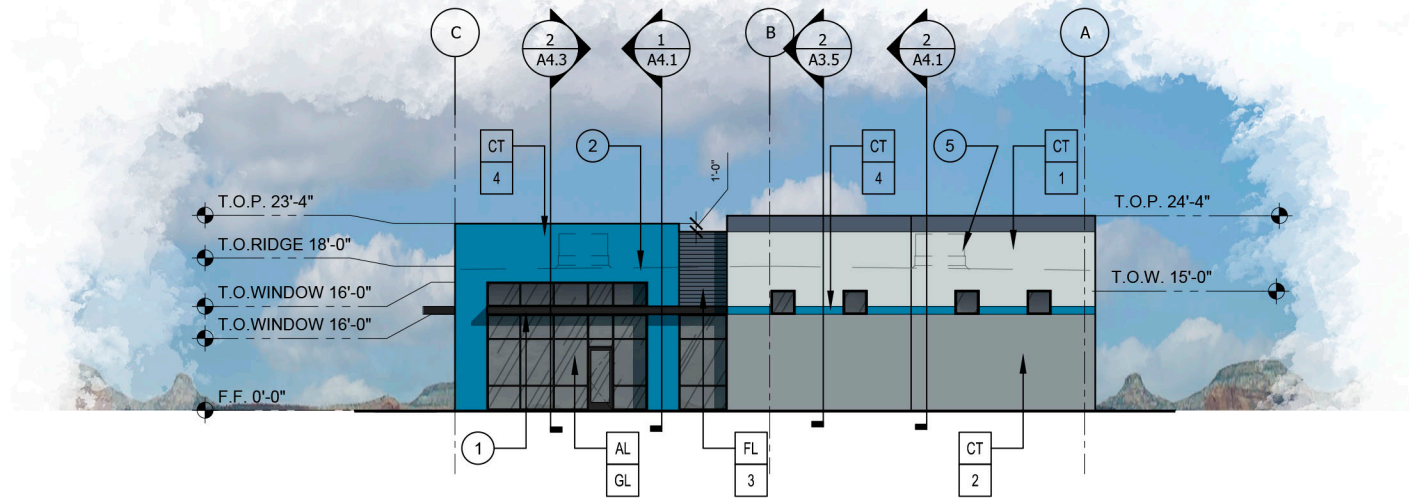
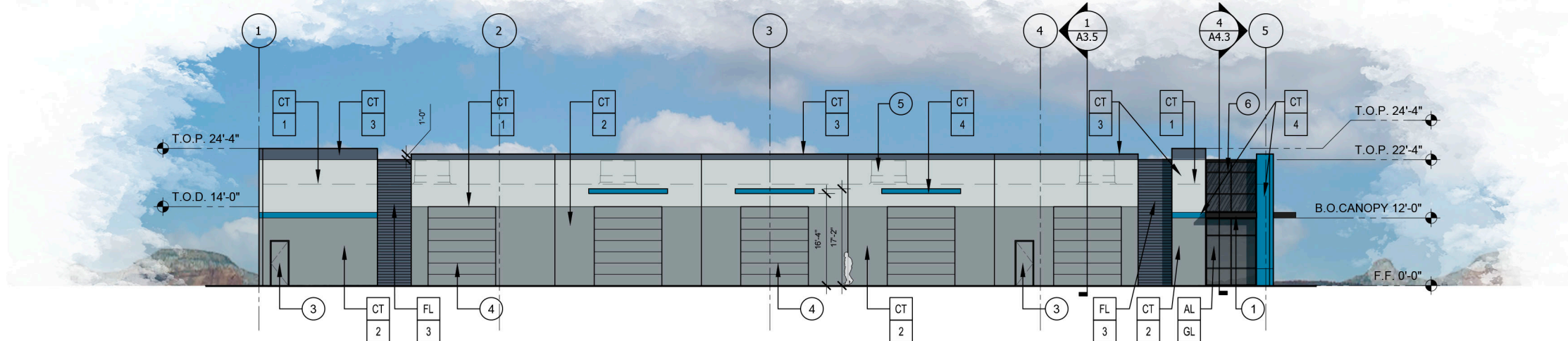


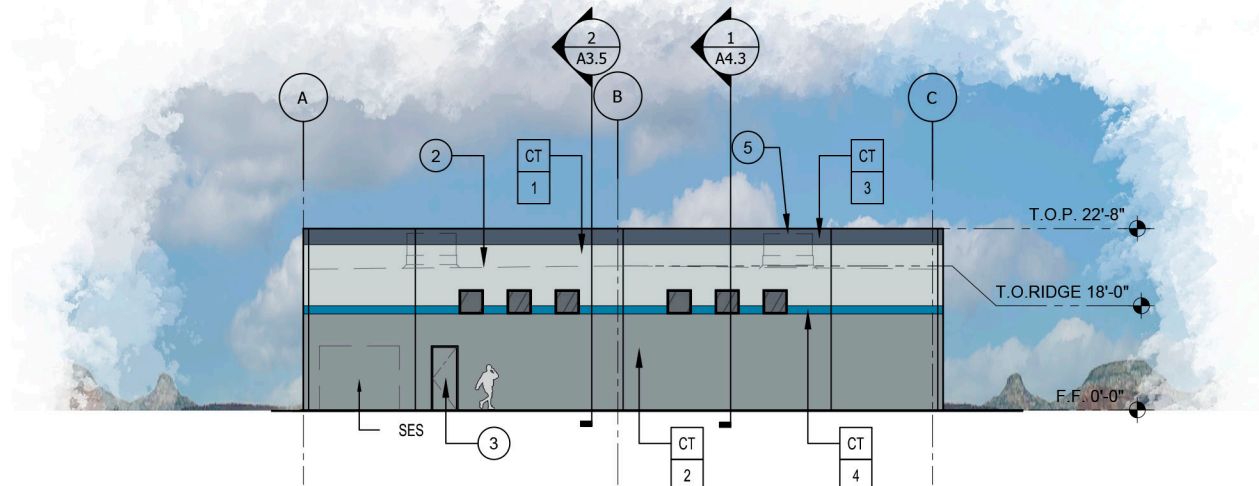
1 BUILDING 3 - NORTH ELEVATION  
SCALE: 1/16" = 1'-0"



2 BUILDING 3 - EAST ELEVATION  
SCALE: 1/16" = 1'-0"



3 BUILDING 3 - SOUTH ELEVATION  
SCALE: 1/16" = 1'-0"



4 BUILDING 3 - WEST ELEVATION  
SCALE: 1/16" = 1'-0"

## MATERIALS

- CT CONCRETE TILT PANEL PAINTED
- FL CONCRETE TILT FORM LINER PANEL PAINTED
- SC 12" STEEL CHANNEL PAINTED

## STOREFRONT

- AL DK BRONZE ANODIZED ALUMINUM
- GL SOLAR BAND "GRAY"

## PAINT SCHEDULE

- 1 SHERWINN WILLIAMS - SW 6232 "MISTY" LRV - 64
- 2 SHERWINN WILLIAMS - SW 7664 "STEELY GRAY" LRV - 30
- 3 SHERWINN WILLIAMS - SW 2740 "MINERAL GRAY" LRV - 10
- 4 SHERWINN WILLIAMS - SW 6796 "BLUE PLATE" LRV - 17
- 5 SHERWINN WILLIAMS - SW 6990 "CAVIAR" LRV - 3

## KEY NOTES

- 1 STEEL CANOPY ELEMENT PAINTED "P5".
- 2 ROOF LINE BEYOND.
- 3 HOLLOW METAL DOOR PAINTED TO MATCH ADJACENT WALL, TYPICAL.
- 4 OVERHEAD DOOR PAINTED TO MATCH ADJACENT WALL, TYPICAL.
- 5 FUTURE HVAC UNIT
- 6 SPANDREL GLASS LOCATION

## PAINTING NOTES

- A. SEALANTS FOR THE PROJECT TO MATCH ADJACENT MATERIAL COLORS.
- B. PAINTER TO PREPARE SAMPLES WITH APPROPRIATE COLOR TO BE APPROVED BY OWNER PRIOR TO APPLICATION ON BUILDING FACADES.

## GENERAL NOTES

- A. ALL ROOF DRAINAGE TO BE INTERNALIZED WITHIN BUILDING WALLS
- B. HVAC EQUIP. TO BE FULLY SCREENED
- C. ALL STEEL CANOPY FACES TO BE SMOOTH. ROLLER/FABRICATION MARKS FROM TUBE PRODUCTION TO BE FILLED AND SANDED SMOOTH.



2039 E RICE DR., TEMPE  
AZ, 85283  
480-589-3793  
VINCE@DALKEDESIGNGROUP.COM

C.O.P. PROJECT NUMBERS:  
KIVA: 21-4997  
SDEV: 2100494  
PAPP: 2108583  
PRLM: 2204891  
Q.S.: Q5-31

JONES INDUSTRIAL  
18TH STREET AND JONES  
PHOENIX, AZ

NUMBER REVISION DATE

|  |  |  |
|--|--|--|
|  |  |  |
|  |  |  |
|  |  |  |
|  |  |  |
|  |  |  |
|  |  |  |
|  |  |  |
|  |  |  |
|  |  |  |
|  |  |  |

SEAL



SHEET TITLE  
BUILDING 3 - ELEVATIONS

ISSUE DATE 4/19/2023  
DRAWN DMP  
CHECKED BY VJD  
PROJECT NUMBER -

DRAWING NO.

A3.4

REV -