



Keegan & Coppin
COMPANY, INC.

FOR LEASE

399 BUSINESS PARK COURT
WINDSOR, CA

Warehouse Space

Go beyond broker.

REPRESENTED BY:

RUSS MAYER, PARTNER
LIC # 01260916 (707) 664-1400, EXT 353
RMAYER@KEEGANCOPPIN.COM

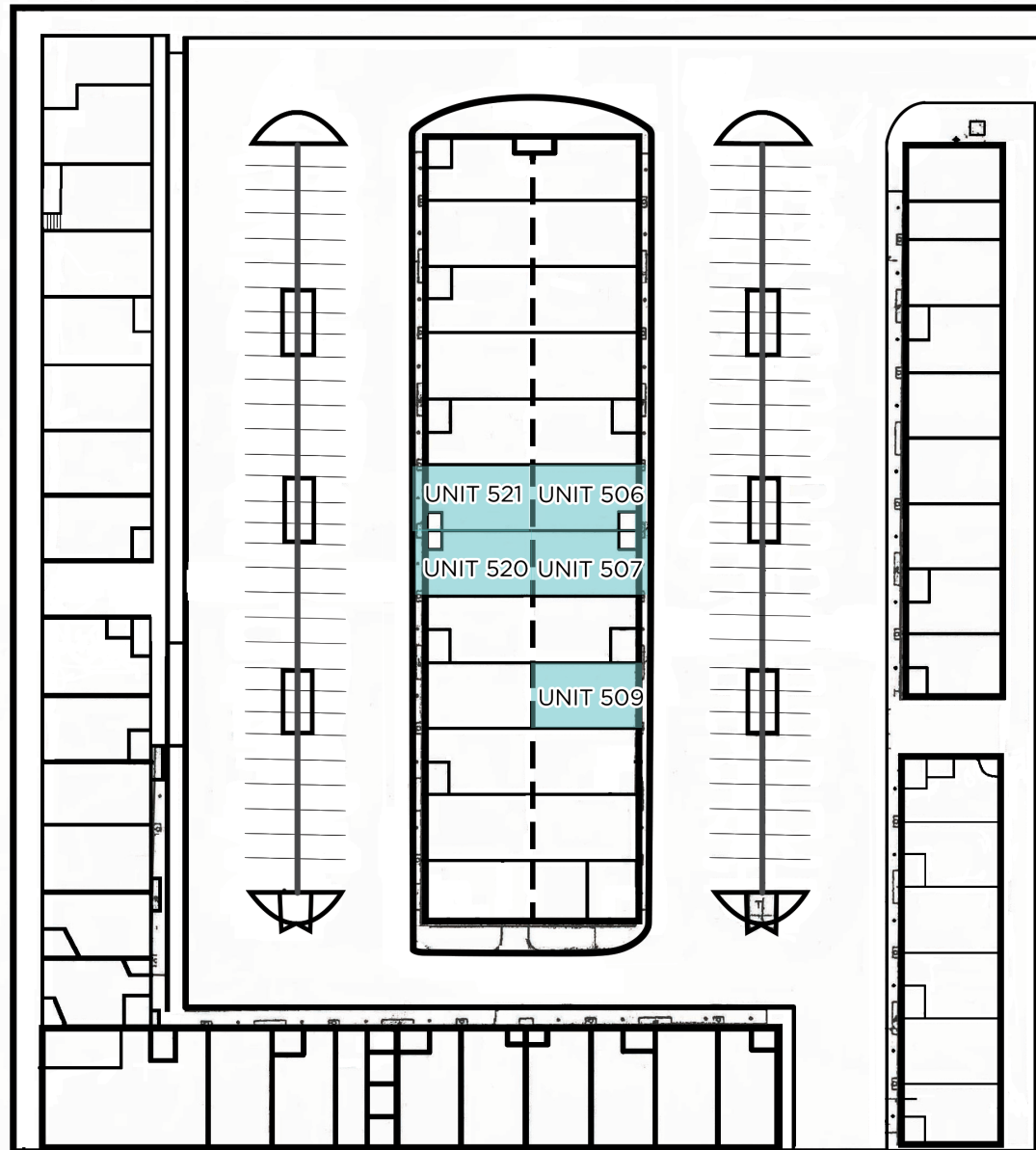


SITE PLAN



399 BUSINESS PARK CT
WINDSOR, CA

WAREHOUSE SPACE
FOR LEASE



PRESENTED BY:

RUSS MAYER, PARTNER
LIC # 01260916 (707) 664-1400, EXT 353
RMAYER@KEEGANCOPPIN.COM

The above information, while not guaranteed, has been secured from sources we believe to be reliable. Submitted subject to error, change or withdrawal. An interested party should verify the status of the property and the information herein.



PROPERTY INFORMATION



399 BUSINESS PARK CT
WINDSOR, CA

**WAREHOUSE SPACE
FOR LEASE**

PROPERTY INFORMATION

HIGHLIGHTS

- Sprinklered for Fire Protection
- Three-Phase Electrical Service
- Comcast High-Speed Data
- Monument and Building Signage
- Grade Level Truck Doors
- Exclusive Windsor Location
- Easy Access to Highway 101
- Proximity to Food and Retail Services

AVAILABLE SPACE

Unit 509 1,000+/- SF

**Units 506,
507, 520, 521:** 3,690+/- SF

DESCRIPTION

Clear span warehouse, approximately 16' clear span with a single, grade level roll-up truck door (+/- 25' x 40').

Features include: an approx. 400+/- SF office/showroom, partial lowered ceiling with electrical drops and several hose bibs. Ceiling height is approx. 16' clear and there are three (3) grade-level automatic truck doors. Space is divisible into two (2) 1,845+/- SF units.

LEASE TERMS

RATE

\$1.55 PSF

TERMS

Gross

Rate includes CAM expense

3-5 year lease term preferred

4% requested annual rent adjustments

TOTAL BUILDING SIZE

63,840 +/- SF

PARKING

2:1,000 SF

ZONING

IL - Light Industrial

DESCRIPTION OF PREMISES

Shiloh Business Center is a multi-tenant industrial park designed to accommodate tenants seeking smaller warehouse and office space but also offers the flexibility for units to be combined for larger uses. Unit features include: 100-amp/3-phase electrical service, sprinklered for fire protection and insulated roofs. Very well maintained industrial park completed in 2007 with responsive, on-site property management. These modern and architecturally pleasing buildings are located just off Shiloh Road and adjacent to the Shiloh Retail Center anchored by Home Depot, Wal-Mart, and Grocery Outlet.

PRESENTED BY:

RUSS MAYER, PARTNER
LIC # 01260916 (707) 664-1400, EXT 353
RMAYER@KEEGANCOPPIN.COM

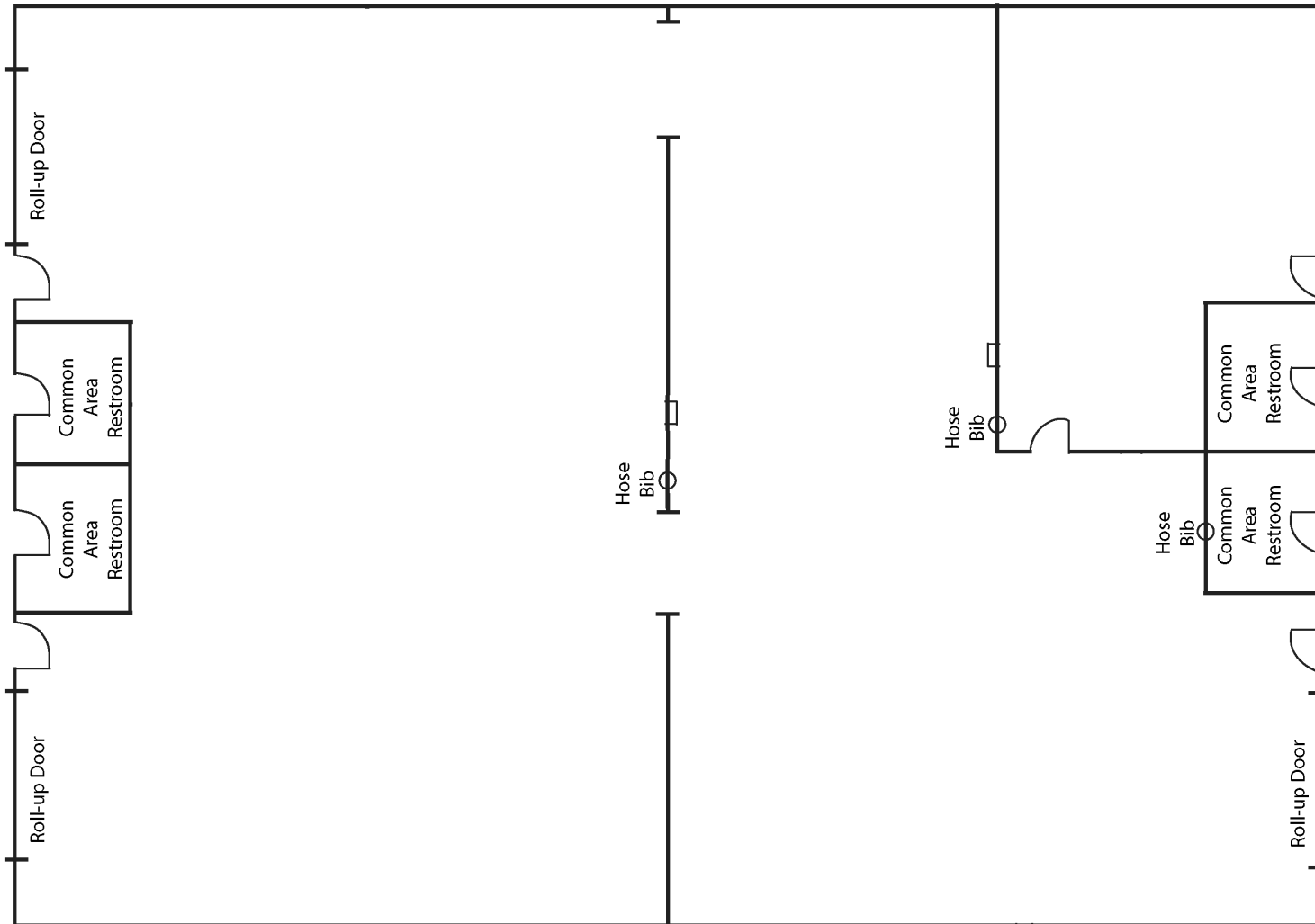


FLOOR PLAN



399 BUSINESS PARK CT
WINDSOR, CA

WAREHOUSE SPACE
FOR LEASE



PRESENTED BY:

RUSS MAYER, PARTNER
LIC # 01260916 (707) 664-1400, EXT 353
RMAYER@KEEGANCOPPIN.COM

The above information, while not guaranteed, has been secured from sources we believe to be reliable. Submitted subject to error, change or withdrawal. An interested party should verify the status of the property and the information herein.



AREA DESCRIPTION



399 BUSINESS PARK CT
WINDSOR, CA

**WAREHOUSE SPACE
FOR LEASE**

DESCRIPTION OF AREA

Located just off Highway 101 at Shiloh Road. Shiloh Business Park is adjacent to the Shiloh Retail Power Center, anchored by Wal-Mart and Home Depot, insuring that this will be a quality business park long into the future. Other retail tenants in the center include Grocery Outlet, Les Schwab Tires, Starbucks, and many other national and strong regional retailers.



Keegan & Coppin Co., Inc.
1201 N McDowell Boulevard
Petaluma, CA 94954
www.keegancoppin.com
(707) 664-1400

The above information, while not guaranteed, has been secured from sources we believe to be reliable. Submitted subject to error, change or withdrawal. An interested party should verify the status of the property and the information herein.

REPRESENTED BY:

RUSS MAYER, PARTNER
LIC # 01260916 (707) 664-1400, EXT 353
RMAYER@KEEGANCOPPIN.COM



ABOUT KEEGAN & COPPIN



399 BUSINESS PARK CT
WINDSOR, CA

WAREHOUSE SPACE
FOR LEASE



Your partner in commercial real estate in the North Bay & beyond since 1976.

Keegan & Coppin has served our communities in the North Bay for well over 40 years. But our unmatched local experience is only part of what makes us the area's most trusted name in commercial real estate. At Keegan & Coppin, we bring together a range of services that go beyond traditional brokerage. That depth of knowledge and diverse skillset allows us to clarify and streamline all aspects of your transaction, giving you the confidence of knowing that we can help with anything that comes up through all phases of a project.

Keegan & Coppin Co., Inc.
1201 N McDowell Blvd.
Petaluma, CA 94954
www.keegancoppin.com
(707) 664-1400

The above information, while not guaranteed, has been secured from sources we believe to be reliable. Submitted subject to error, change or withdrawal. An interested party should verify the status of the property and the information herein.

PRESENTED BY:

RUSS MAYER, PARTNER
LIC #01260916 (707) 664-1400, EXT 353
RMAYER@KEEGANCOPPIN.COM