



(336) 379-8771 | www.bipinc.com



307 Harvey Street
Winston-Salem, NC 27103

Contact: Austin Hill, Broker
ahill@bipinc.com
P: 336-541-5510
C: 336-543-4850



FOR SALE
891 +/- SF
\$359,000

307 Harvey Street

FOR SALE: \$359,000

Rare opportunity to acquire a highly visible freestanding office property just off Stratford Road, one of Winston-Salem's busiest commercial corridors. 307 Harvey Street offers exceptional accessibility and convenience with quick access to downtown Winston-Salem, Thruway Shopping Center, Hanes Mall, and numerous restaurants, retail centers, medical offices, and financial institutions. The property is surrounded by established professional and service-oriented businesses, making it an ideal location for owner-users seeking strong visibility and a central in-town presence.

307 Harvey Street has been meticulously maintained by the same Owner-Operator since 1985, offering nearly 40 years of exceptional upkeep with no known deferred maintenance. The efficient floor plan includes five private offices/treatment rooms, a welcoming reception area, break room, and restroom. Plumbing is available in every room, creating an excellent opportunity for salon, barber, spa, wellness, medical, or other service-based users requiring individual water access. Contact Broker to schedule a tour.



- Property Address: 307 Harvey Street, Winston-Salem, NC 27103
- PIN: 6815-61-9750 (Forsyth County)
- Square Footage: 891 +/- SF
- Acreage: 0.20 +/- Acres
- Zoning: PB (Pedestrian Business)
- Parking: 10 Spaces
- Year Built: 1910 (Renovated 1985)
- Utilities: Duke Energy, Piedmont Natural Gas, City of Winston-Salem
- HVAC & Furnace: Replaced 2020
- Roof: 2013 (approximate)
- Signage: Monument sign on Harvey Street; potential for building signage visible from Stratford Road

* Broker is a relative of Seller

POPULATION



1 Mile	3 Miles	5 Miles
6,119	70,481	174,403

AVERAGE HH INCOME



1 Mile	3 Miles	5 Miles
\$79,597	\$69,570	\$85,157

TRAFFIC



S. Stratford Road & Executive Pk Blvd.

27,055 Vehicles Per Day







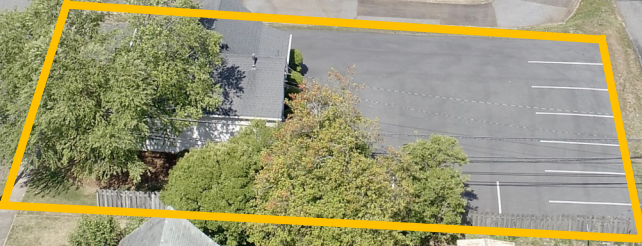
HARVEY ST.

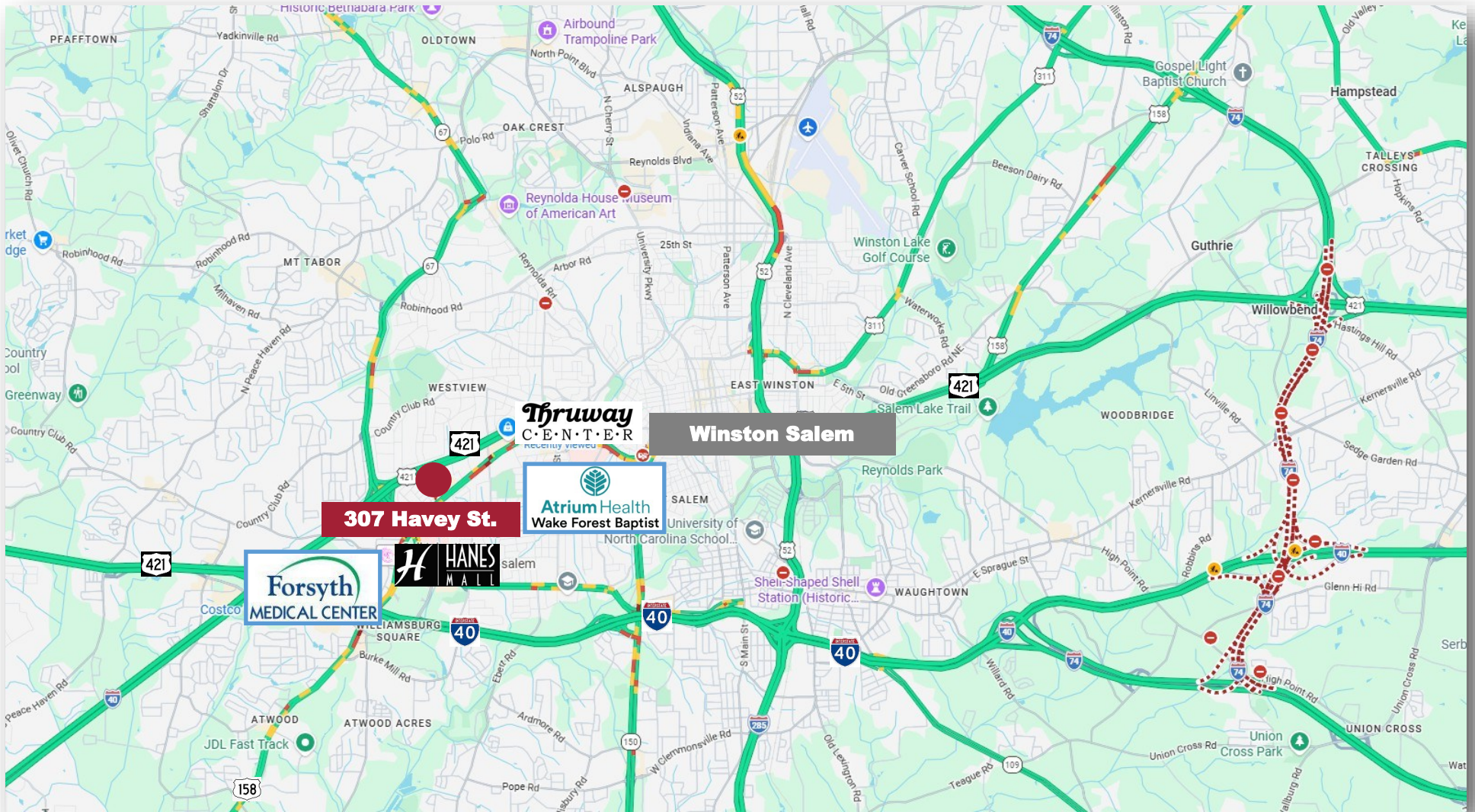
HanesTowne Village

Less than 1 mile
Thruway
C·E·N·T·E·R

HARVEY ST.

STRATFORD RD.





1007 Battleground Avenue, Suite 401, Greensboro NC 27408

The statements and figures herein while not guaranteed are secured from sources believed to be authoritative. This offering is subject to change of price, prior lease or sale and or withdrawal without notice. Prospects should verify all information.