



755 THIMBLE SHOALS BLVD

NEWPORT NEWS, VA 23606



755 THIMBLE SHOALS BLVD

NEWPORT NEWS, VA 23606

PROPERTY SUMMARY



VIDEO

PROPERTY DESCRIPTION

Centrally located in the Oyster Point Business District of Newport News with high visibility from Thimble Shoals Boulevard. This stand alone office building offers ample parking, exterior signage & private entrance. Easy access from J Clyde Morris Blvd and I-64.

PROPERTY HIGHLIGHTS

- Exterior signage available
- Located in the Oyster Point Business Park
- Second floor unit with private entrance
- Lots of natural light
- Rent includes electric & water
- Net of janitorial
- Close proximity to restaurants, shopping & hotels
- Free and ample surface parking

OFFERING SUMMARY

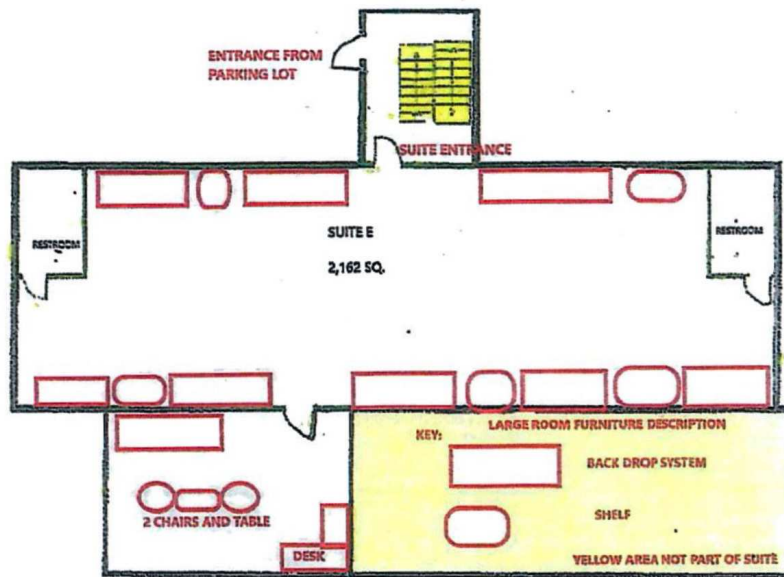
Lease Rate:	\$12.00 SF/yr
Available SF:	2,162 SF
Building Size:	10,420 SF

DEMOGRAPHICS	1 MILE	3 MILES	5 MILES
Total Households	5,277	34,805	78,087
Total Population	11,564	85,996	186,099
Average HH Income	\$79,807	\$98,223	\$98,092

755 THIMBLE SHOALS BLVD

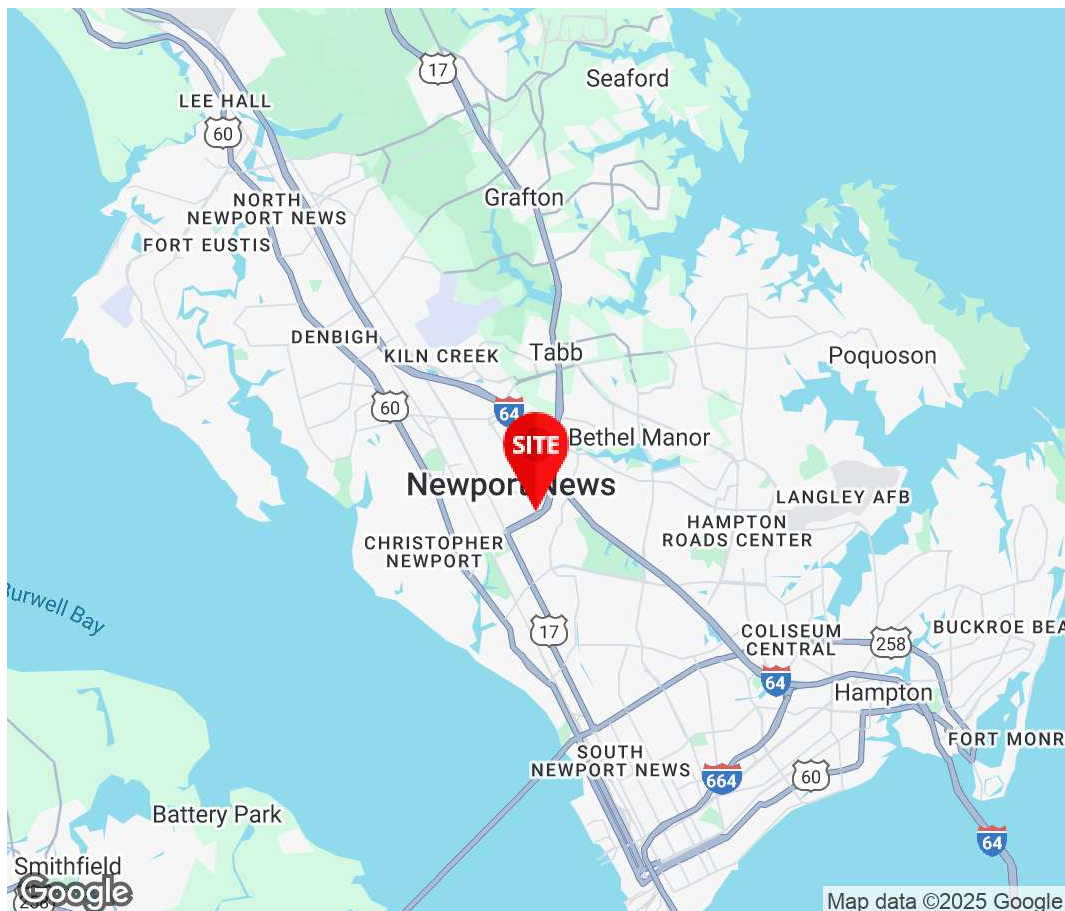
NEWPORT NEWS, VA 23606

ADDITIONAL PHOTOS





Elizabeth C. Paasch
 AVP, Office Leasing and
 Sales
 757.333.4322
 epaasch@divaris.com



The information contained herein should be considered confidential and remains the sole property of Divaris Real Estate, Inc. at all times. Although every effort has been made to ensure accuracy, no liability will be accepted for any errors or omissions. Disclosure of any information contained herein is prohibited except with the express written permission of Divaris Real Estate, Inc.