

**FOR LEASE**  
**4,056 SF**



**RETAIL, OFFICE, SOME MEDICAL**  
Hills Center Business Park of Summerlin

**1925** VILLAGE CENTER CIRCLE,  
LAS VEGAS, NV 89134

**Arlan Adamsen**  
**702-780-1111**  
**Arlan@KCommercial.com**

*VCC***SUM**, LLC



**STARTING RENT/SF/MTH**

**\$2.40**

**CAM/SF/MTH**

**\$0.83**

**BUILT**

**2005**

**CLASS**

**A**

## LEASE OVERVIEW

- ✓ Prime 4,056 SF Office Space
- ✓ Various Allowed Uses
- ✓ 4.4 : 1000 SF Parking Spaces
- ✓ Private Bathrooms
- ✓ Beautifully Landscaped and Maintained
- ✓ Located in Prestigious Hills Center Business Park of Summerlin
- ✓ HVAC in Entire Unit
- ✓ Easy Access from Summerlin Parkway and Town Center

**IMPORTANT:** The information contained herein (on this page and included pages) has been obtained through sources deemed reliable but cannot be guaranteed or relied upon as to its accuracy. Any information should be verified through independent sources by interested parties. All measurements and calculations are approximate. The property may no longer be available for sale or lease, may be withdrawn, its offering price changed, or sold or leased to another party at anytime and without notice. Please do not provide any information deemed private or confidential.

**VCCSUM, LLC**



**LEASED**

**UNIT 150  
AVAILABLE  
4,056 SF**

**\$2.40/SF**



## ALLOWED UNIT USES

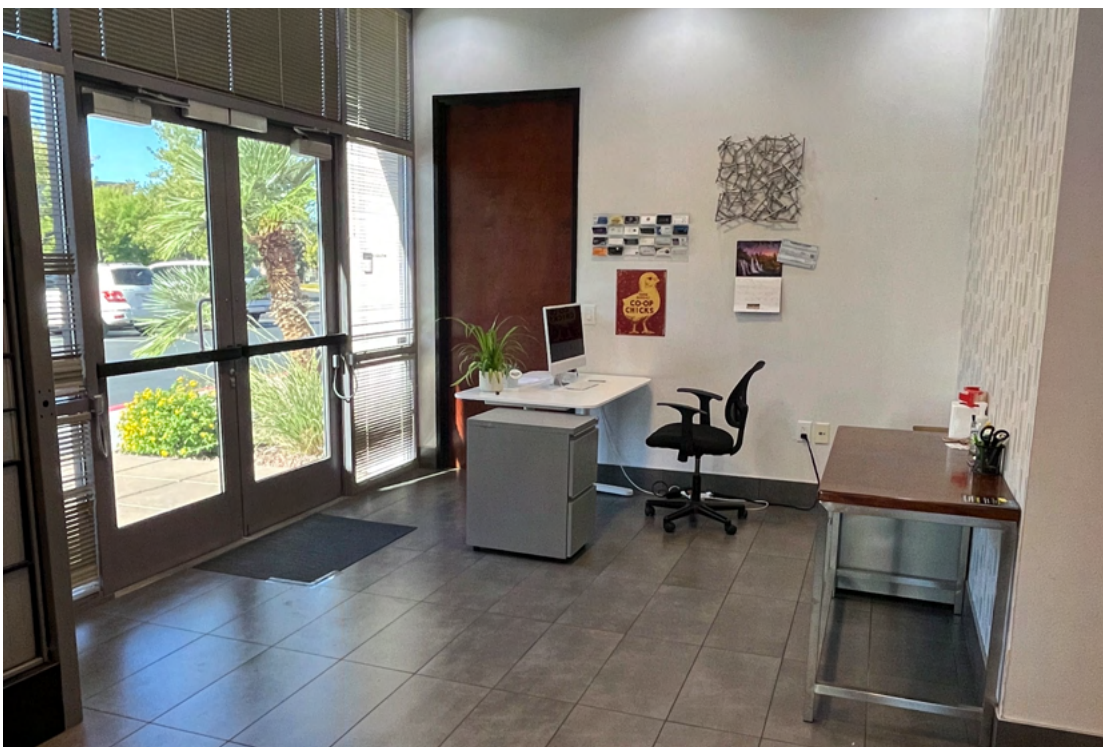
- Office
- Some Medical
- Dental
- Restaurant
- Specialty Shops
- Dance/Exercise Studios
- Child Care
- Educational Facilities

\*Contact us for complete list of uses

**Arlan Adamsen**

**702-780-1111**

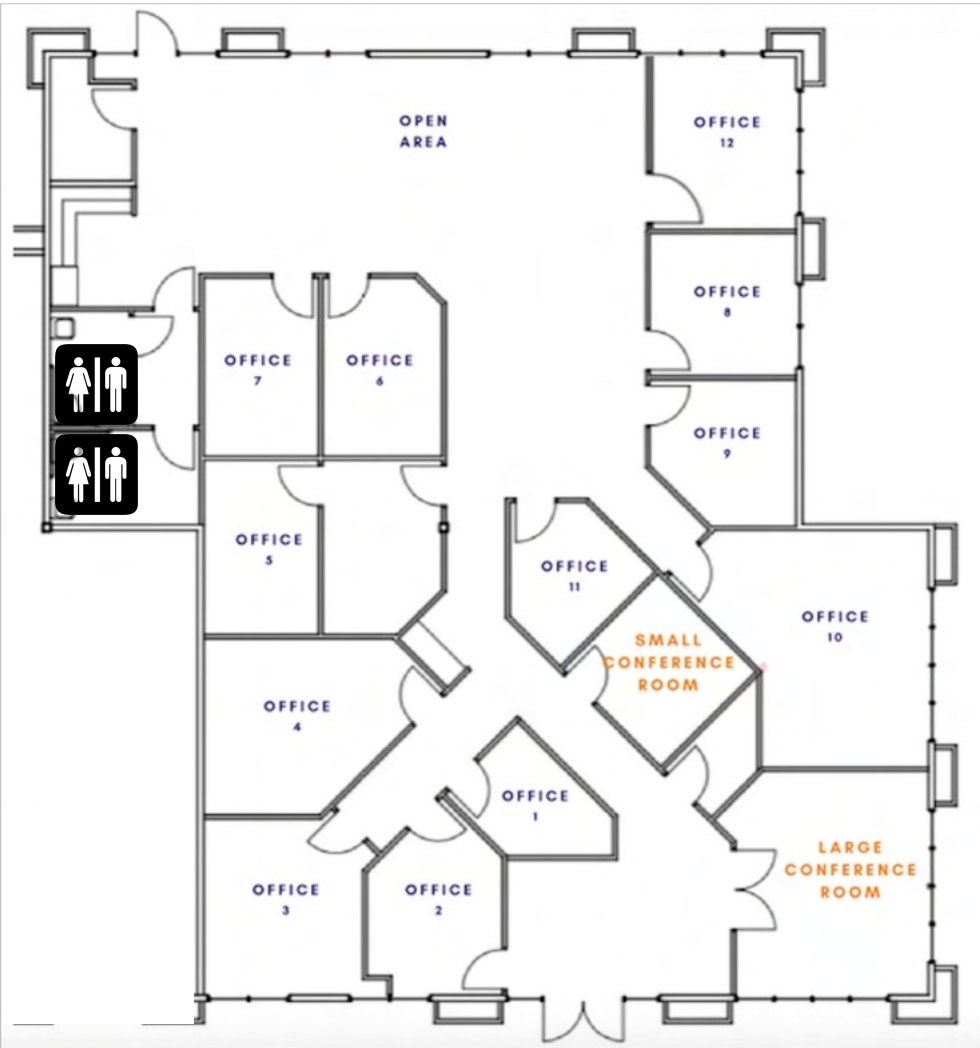
**[Arlan@KCommercial.com](mailto:Arlan@KCommercial.com)**



Unit 150

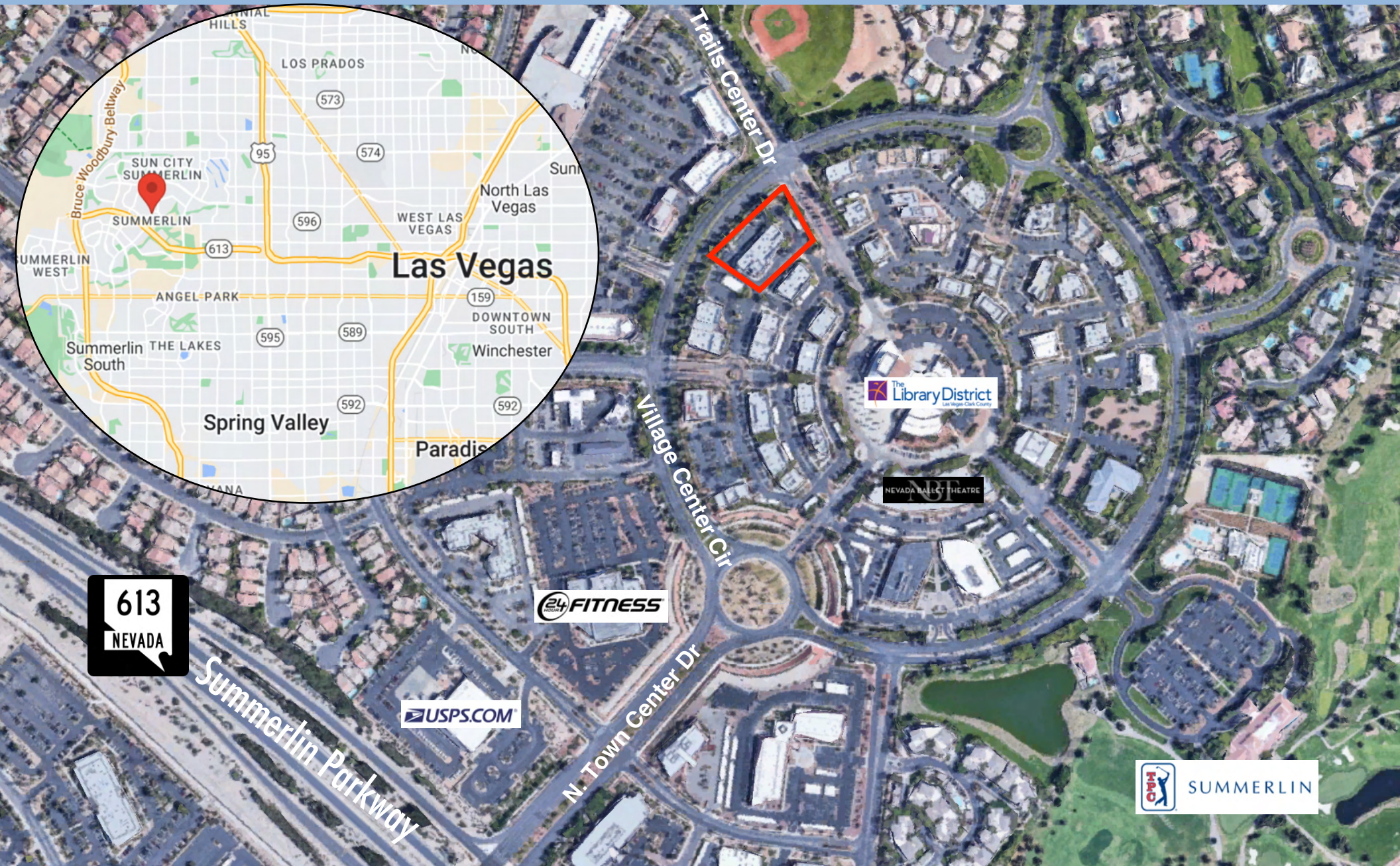
# UNIT 150

- 4,056 SF Office Space
- Two Conference Rooms, 12 Offices, Kitchenette, and Reception Area
- Private Bathrooms
- Can Be Customized for Different Uses





# LOCATION



Arlan Adamsen  
702-780-1111  
Arlan@KCommercial.com

VCCSUM, LLC